

East Sussex County Council Planning Committee 19 January 2022

Page 1

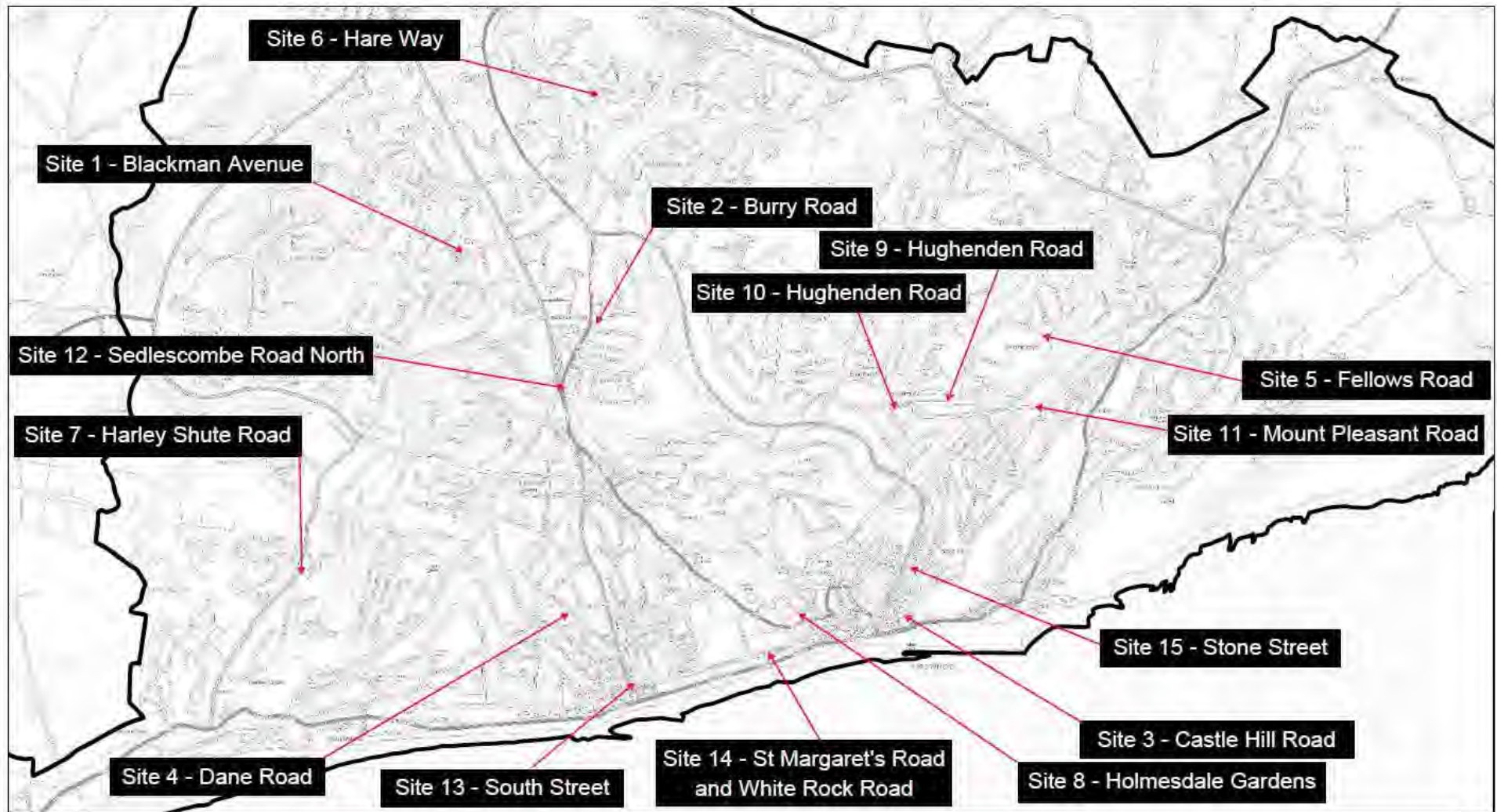
eastsussex.gov.uk



Agenda Item 5

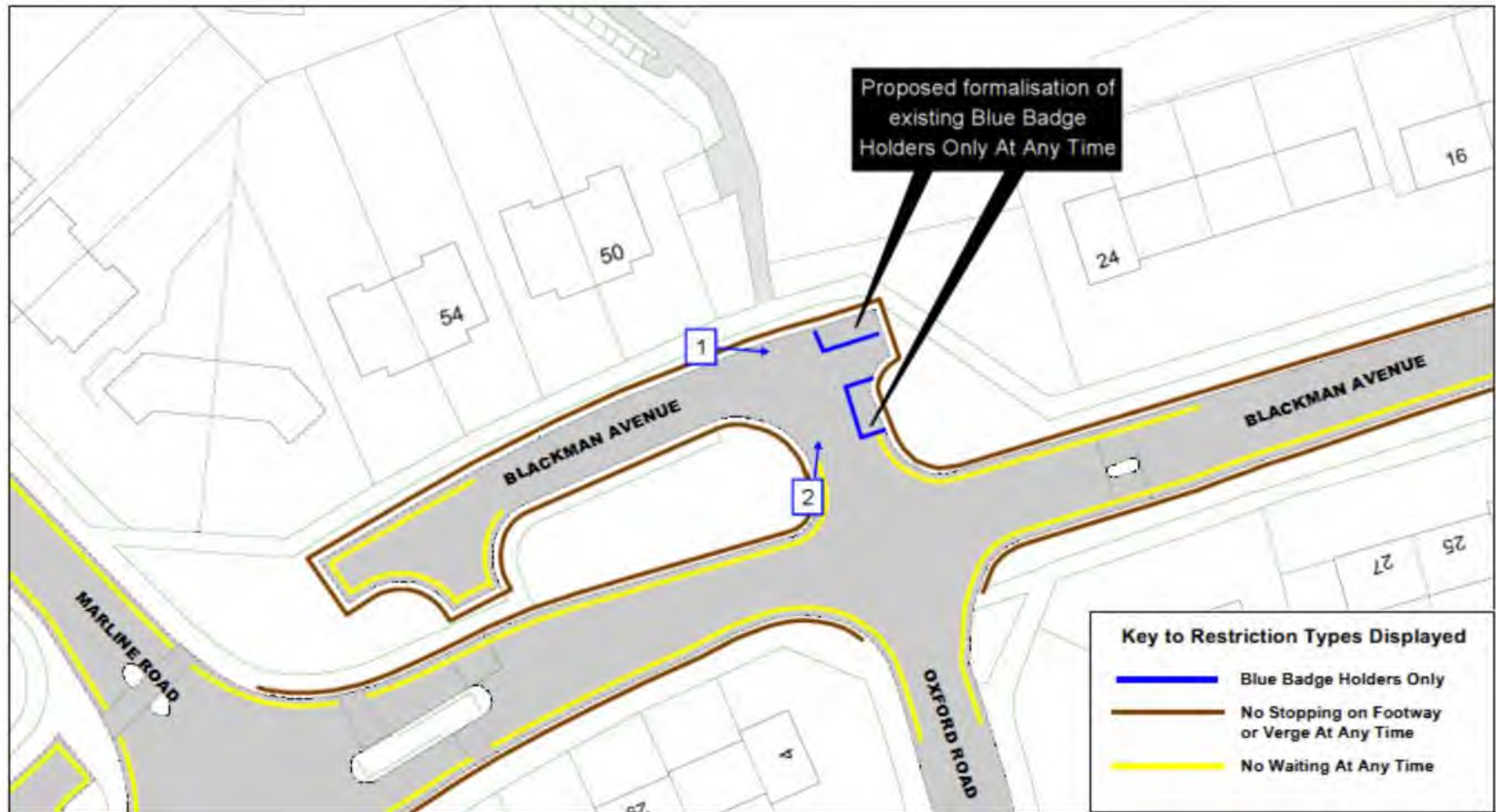
Traffic Regulation Order: Hastings Parking Review 2020 - 2021

Objections received to changes to parking and waiting restrictions proposed during the latest parking review in Hastings Borough



Hastings Parking Review 2020-2021
Sites attracting objections

Site 1 Blackman Avenue



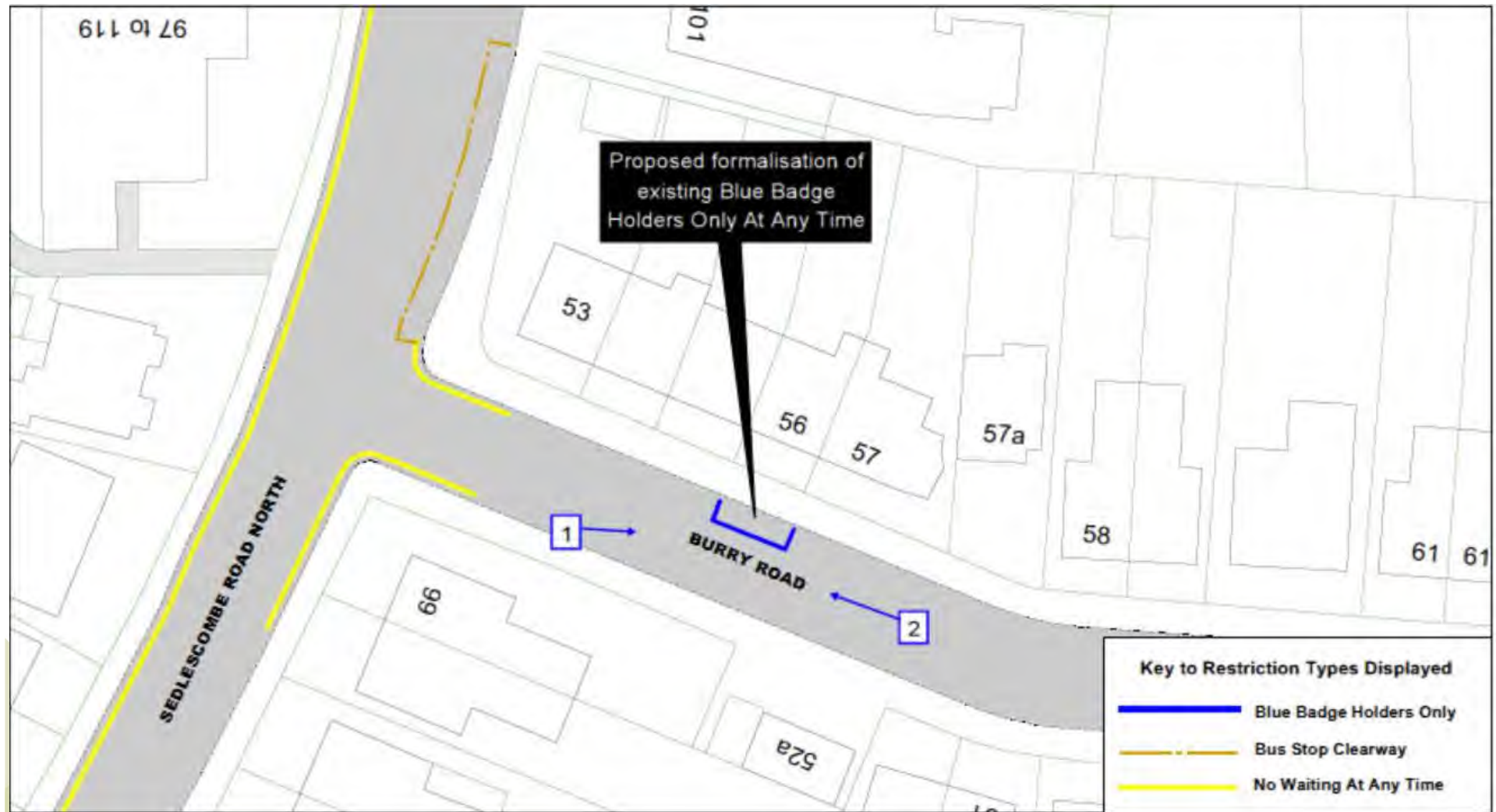


View 1 – Looking south-eastwards at the disabled bays in Blackman Avenue



View 2 – Looking north-eastwards at the disabled bays in Blackman Avenue

Site 2 Burry Road

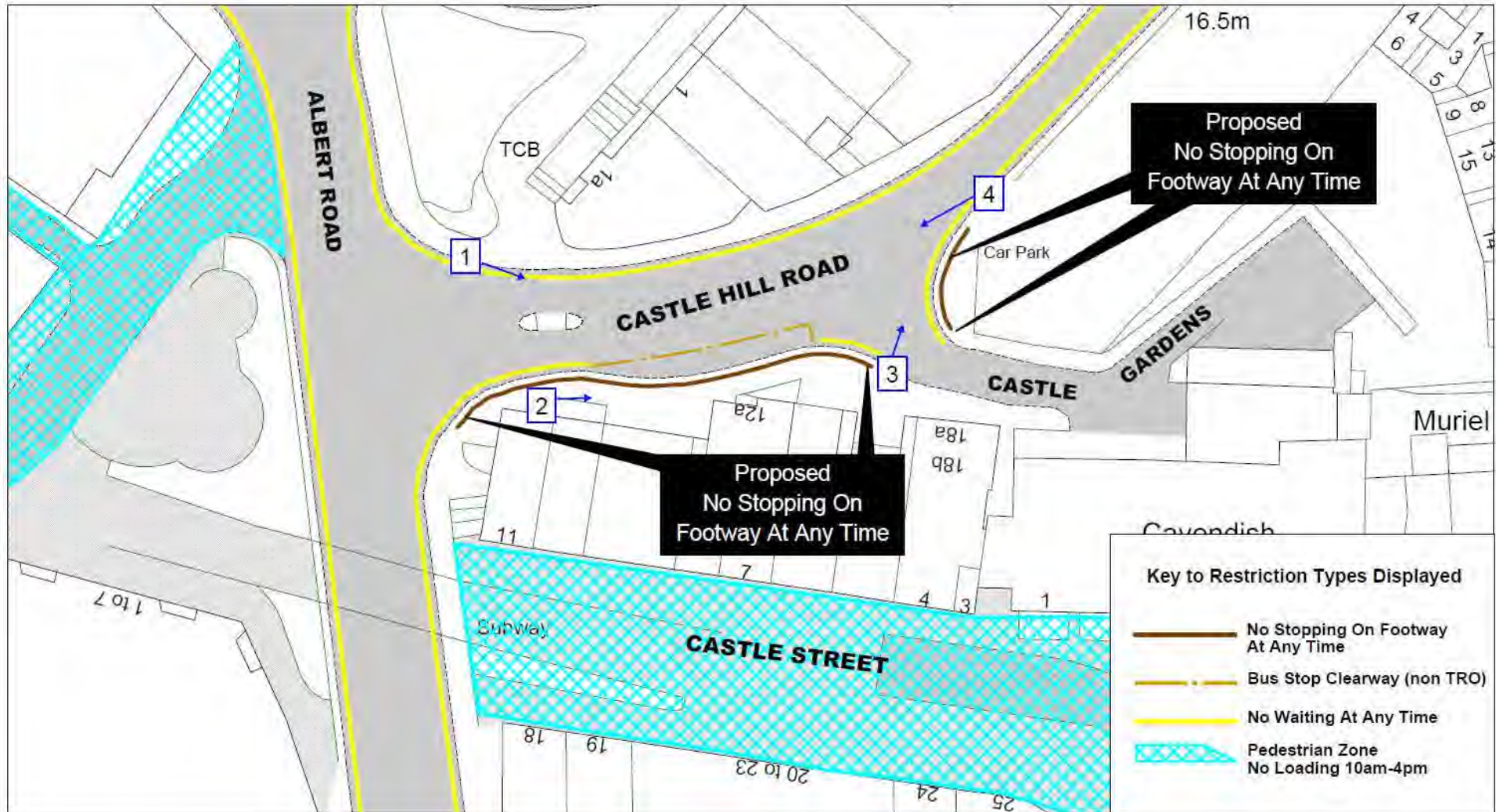




View 1 – Looking eastwards at the disabled bay outside number 56 Burry Road



View 2 – Looking north-westwards along Burry Road





east View 1 – Looking south-eastwards across Castle Hill Road



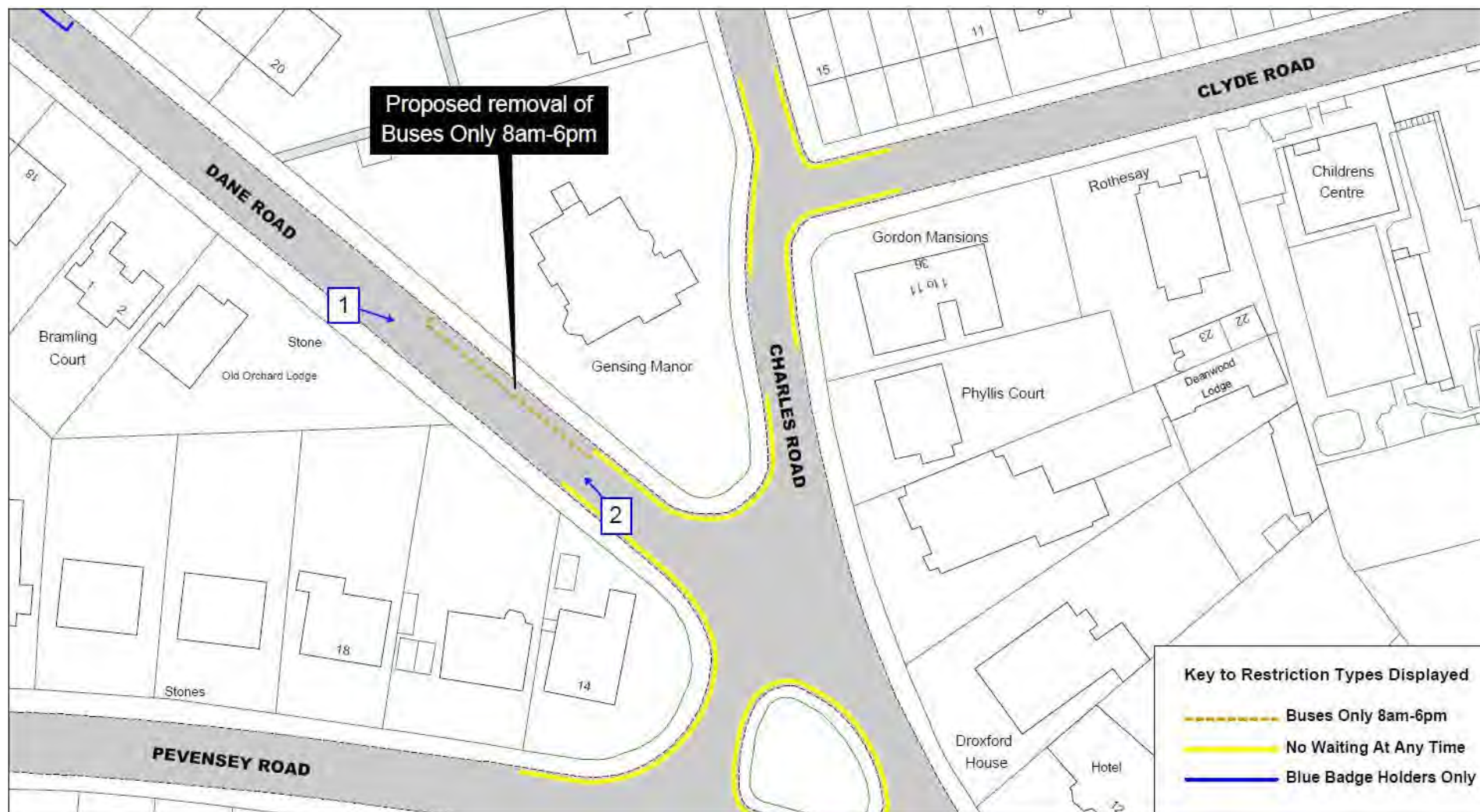
View 2 – Looking eastwards along the pavement in Castle Hill Road



View 3 – Looking north-eastwards at the exit to the car park



View 4 – Looking south-westwards along Castle Hill Road

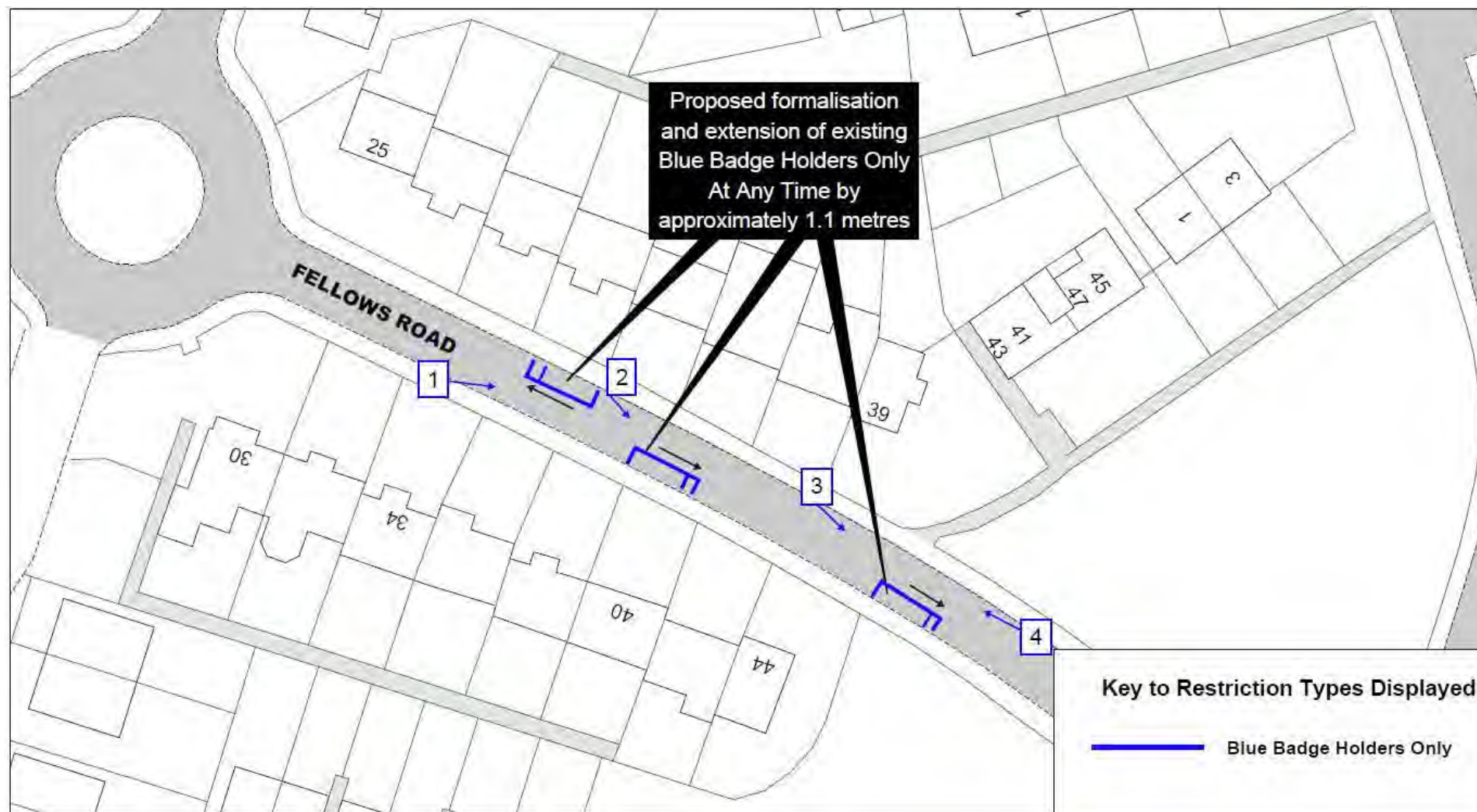




View 1 – Looking south-eastwards at the buses only bay in Dane Road



View 2 – Looking north-westwards along Dane Road





View 1 – Looking eastwards at the disabled bay outside number 31 Fellows Road



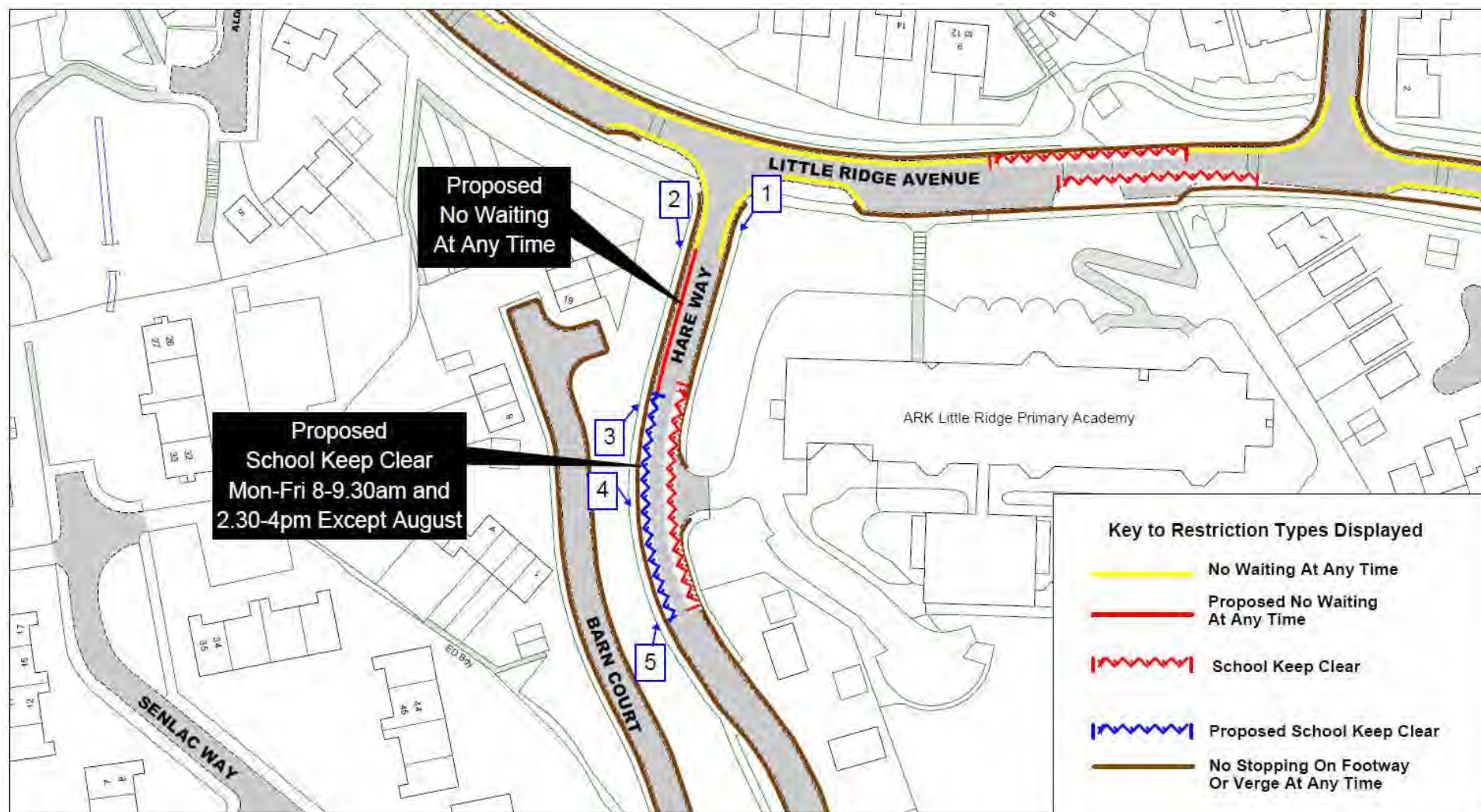
View 2 – Looking south-eastwards at the disabled bay outside number 40
Fellows Road



ea: View 3 – Looking south-eastwards across Fellows Road from outside number 39



View 4 – Looking north-westwards along Fellows Road





View 1 – Looking south-westwards across Hare Way from its junction with Little Ridge Avenue



View 2 – Looking south-eastwards across Hare Way



View 3 – Looking north-eastwards along Hare Way



View 4 – Looking south-eastwards across Hare Way from opposite the entrance to the school



View 5 – Looking north-eastwards at the existing school keep clear markings





east View 1 – Looking southwards across Harley Shute Road



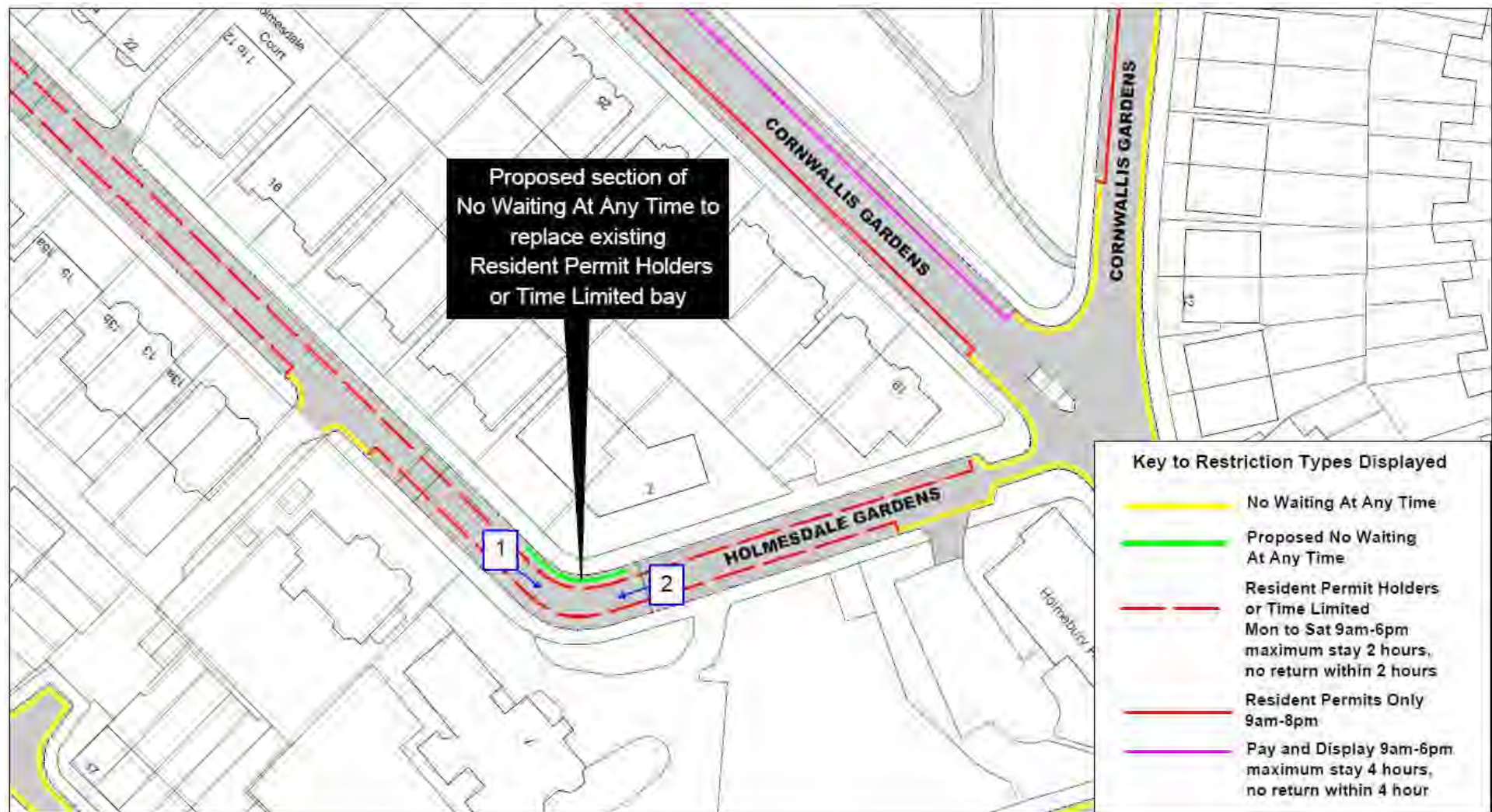
View 2 – Looking south-westwards along Harley Shute Road



View 3 – Looking north-eastwards along Hare Way



View 3 – Looking northwards across Harley Shute Road from its junction with Field Way

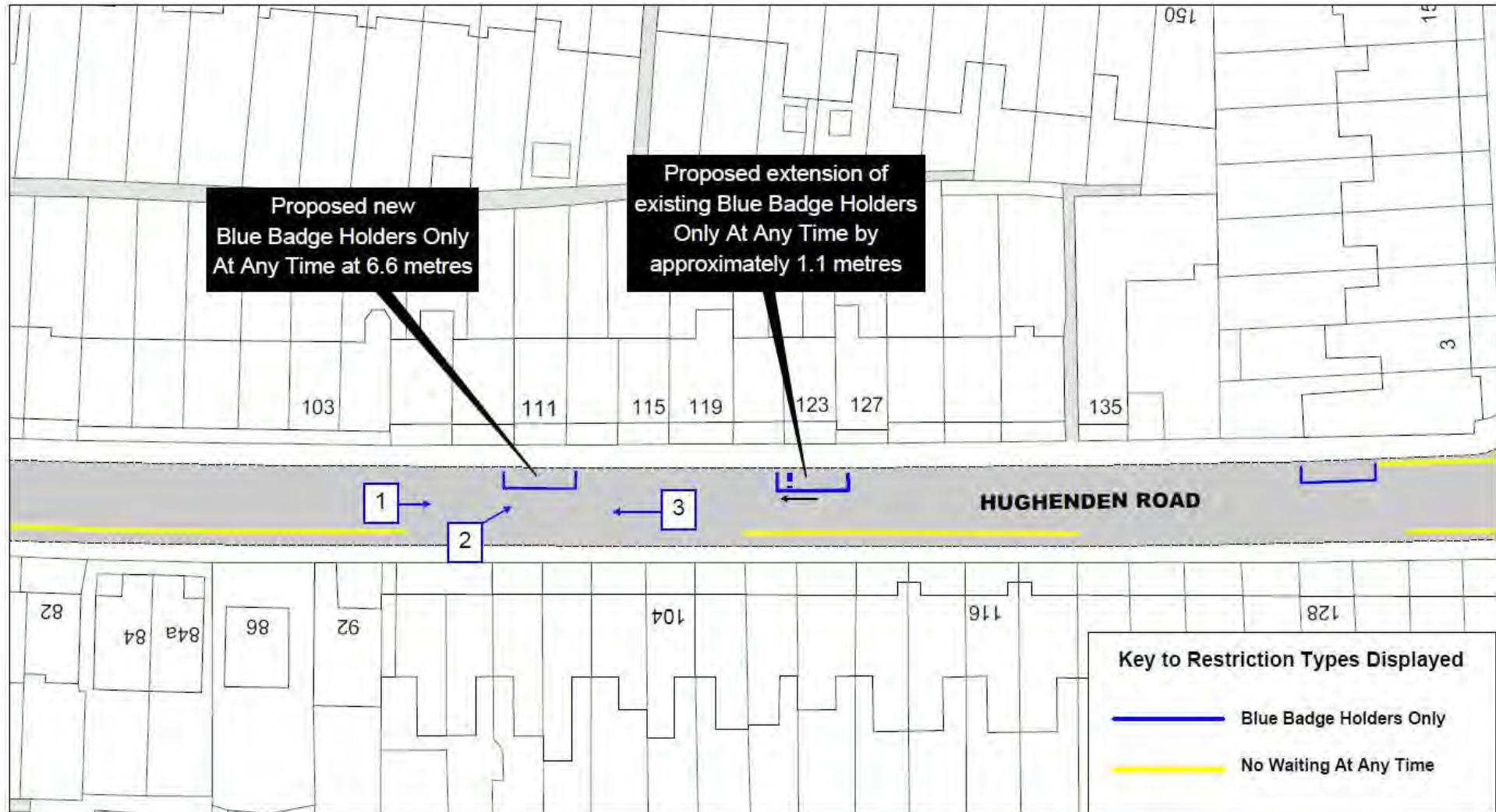




east View 1 – Looking south-eastwards along Holmesdale Gardens



eastuss View 2 – Looking south-westwards along Holmesdale Gardens



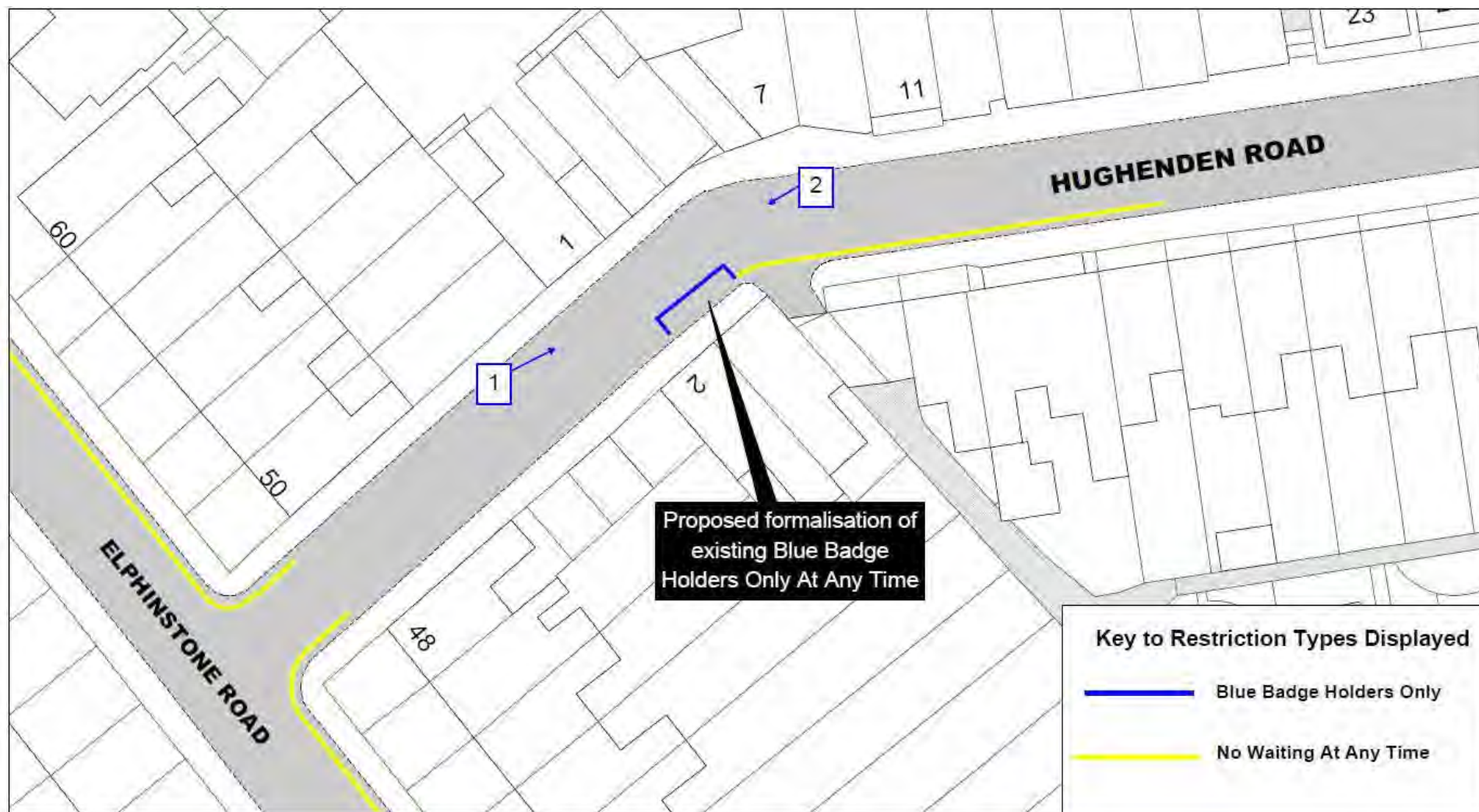


east View 1 – Looking eastwards along Hughenden Road



View 2 – Looking north-eastwards at the frontage of number 111 Hughenden Road



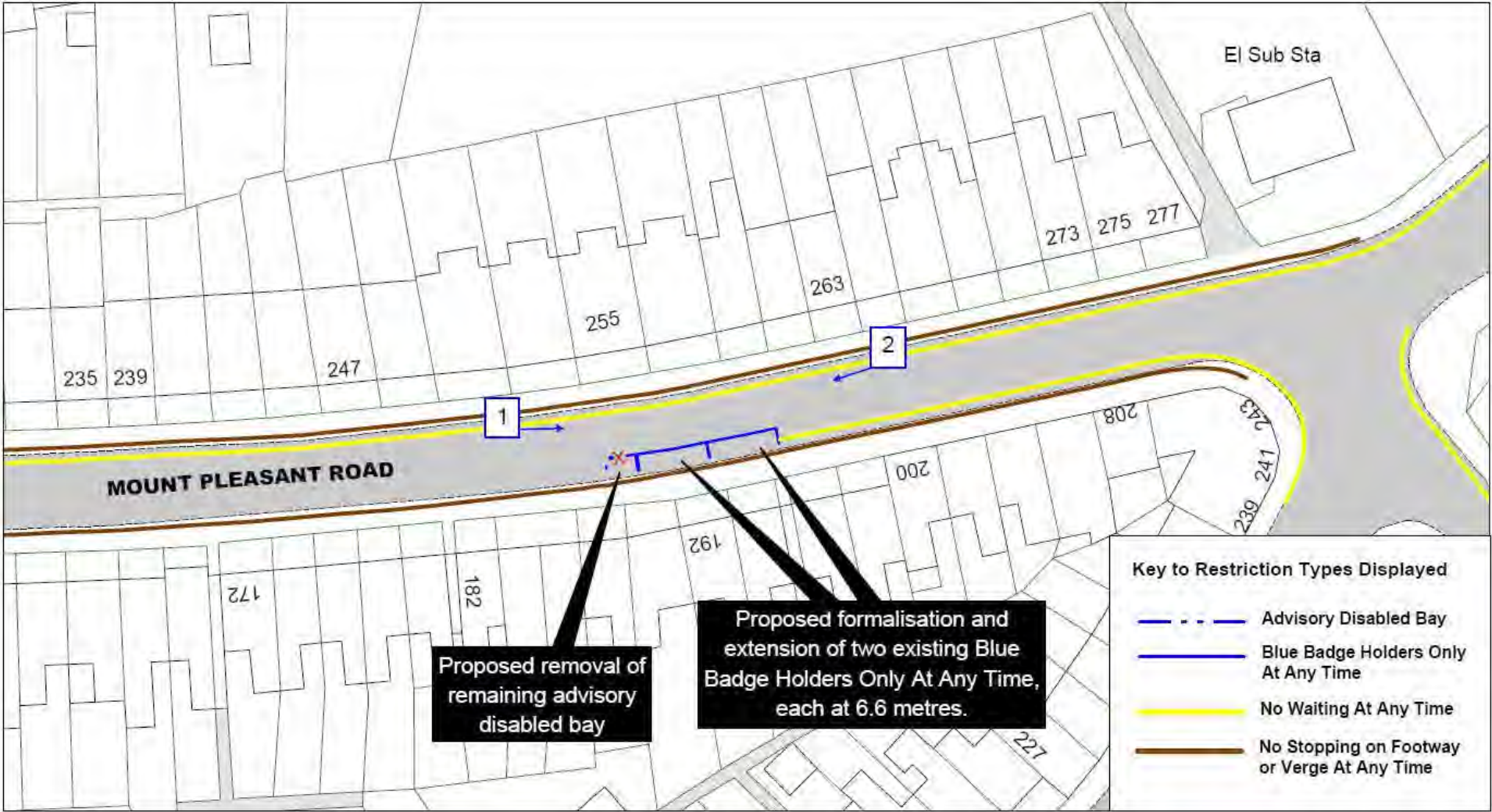




View 1 – Looking north-eastwards along Hughenden Road



View 2 – Looking south-westwards along Hughenden Road

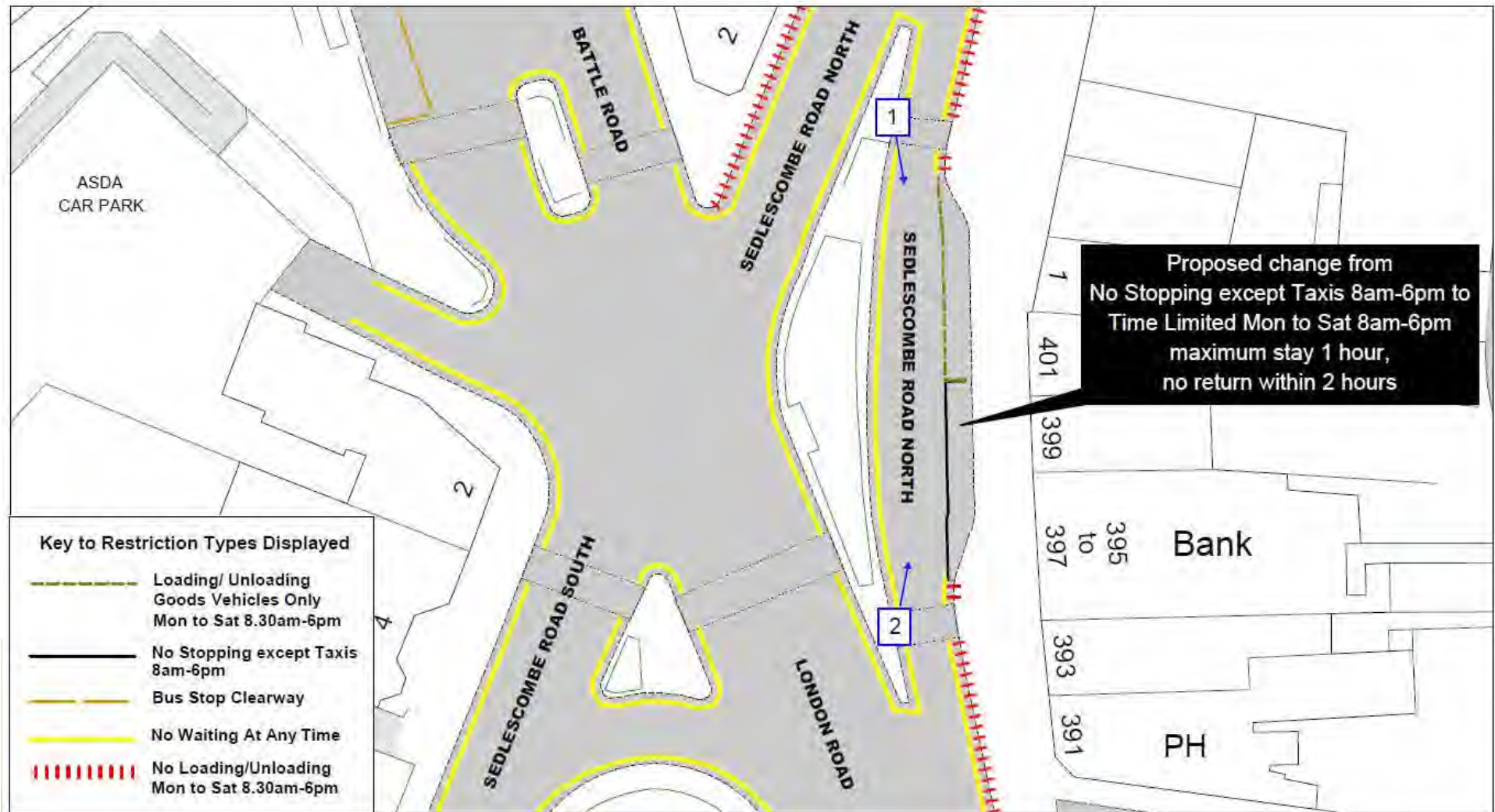




e View 1 – Looking eastwards at the disabled bays in Mount Pleasant Road



View 2 – Looking south-westwards along Mount Pleasant Road

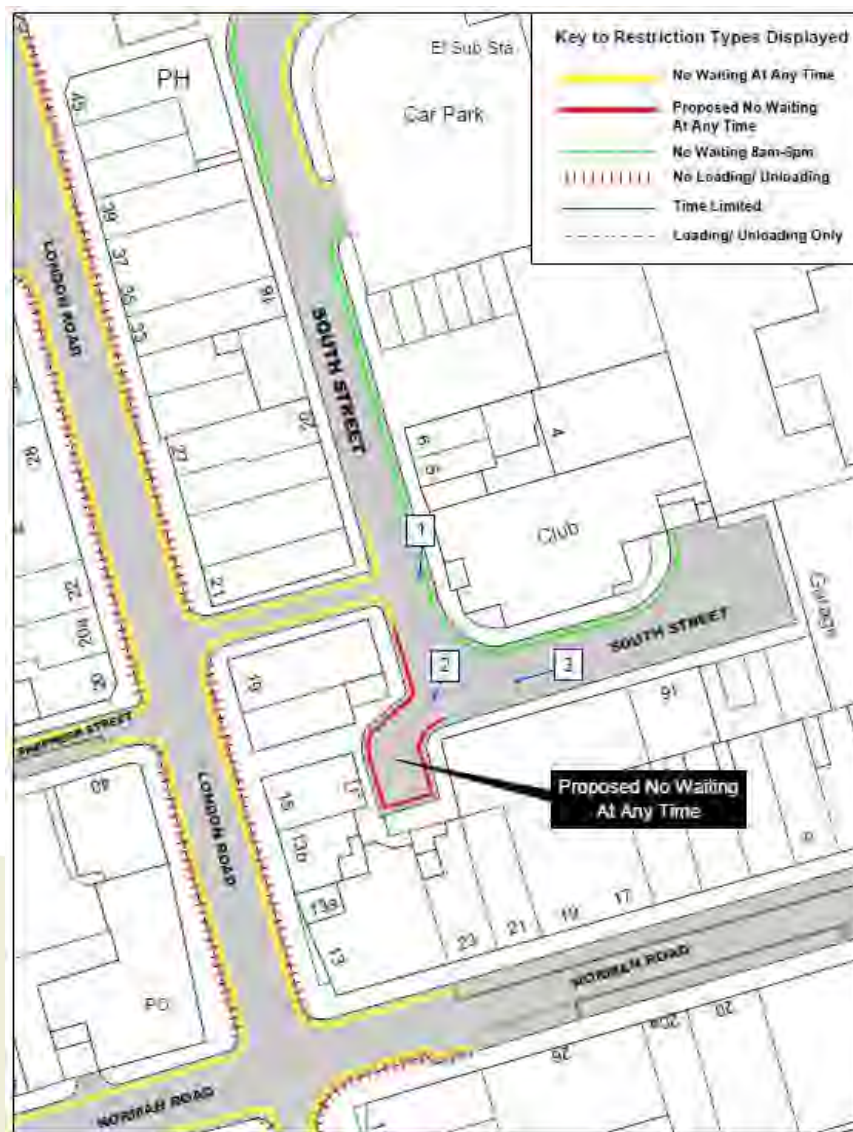




View 1 – Looking south-eastwards at the taxi bay in Sedlescombe Road North



Site 13 South Street





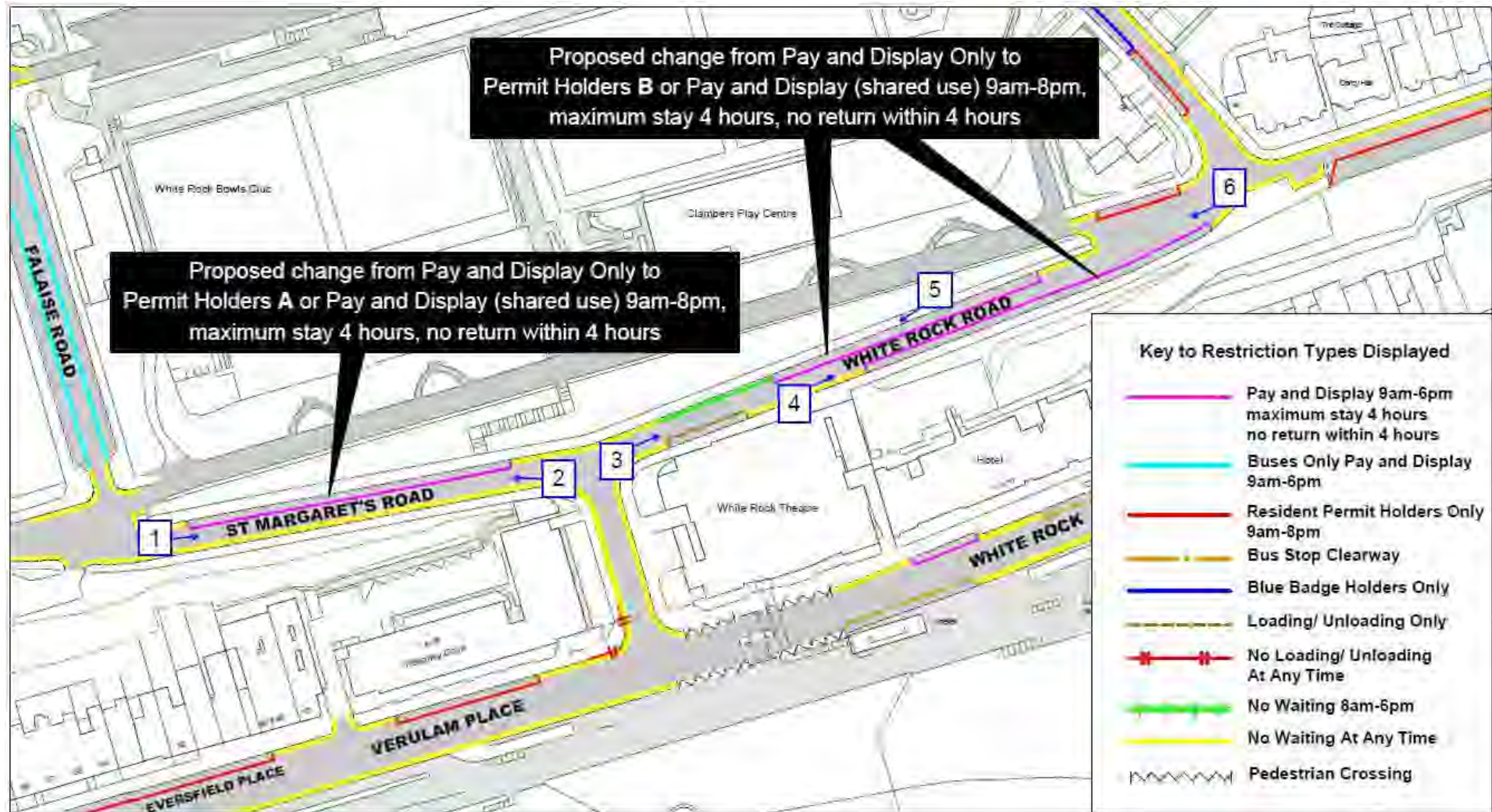
View 1 – Looking southwards across South Street



View 2 – Looking south-westwards at the cul-de-sac area



View 3 – Looking south-westwards along South Street





east View 1 – Looking north-eastwards along St Margaret's Road



View 2 – Looking westwards across St Margaret's Road



View 3 – Looking north-eastwards along White Rock Road



View 3 – Looking north-eastwards along White Rock Road



ea: View 4 – Looking south-westwards across White Rock Road



View 5 – Looking south-westwards along White Rock Road





View 1 – Looking north-eastwards across Stone Street



View 2 – Looking north-westwards at the disabled bay in Stone Street

Traffic Regulation Order: Hastings Parking Review 2020 - 2021

Objections received to changes to parking and waiting restrictions proposed during the latest parking review in Hastings Borough