

East Sussex County Council Planning Committee 17 September 2025

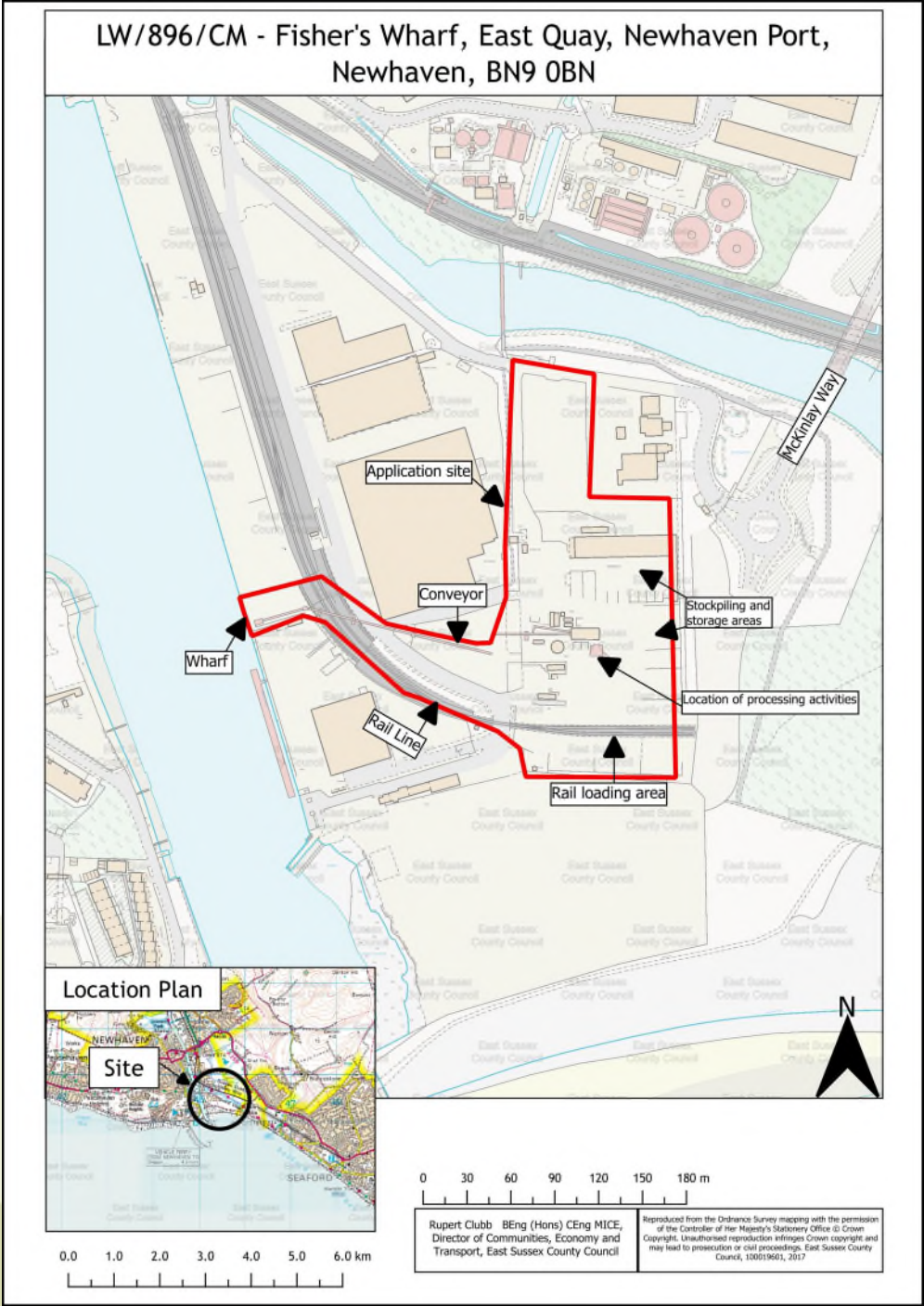
Page 1

East Sussex
County Council

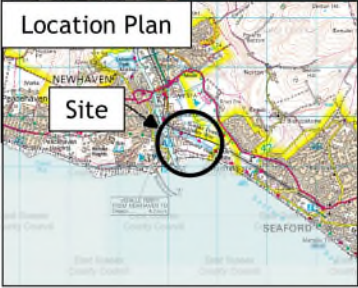


LW/896/CM – Fisher's Wharf, East Quay, Newhaven Port, Newhaven BN9 0BN

Variation of Condition 3 of planning permission
LW/799/CM(EIA) to extend the hours of working



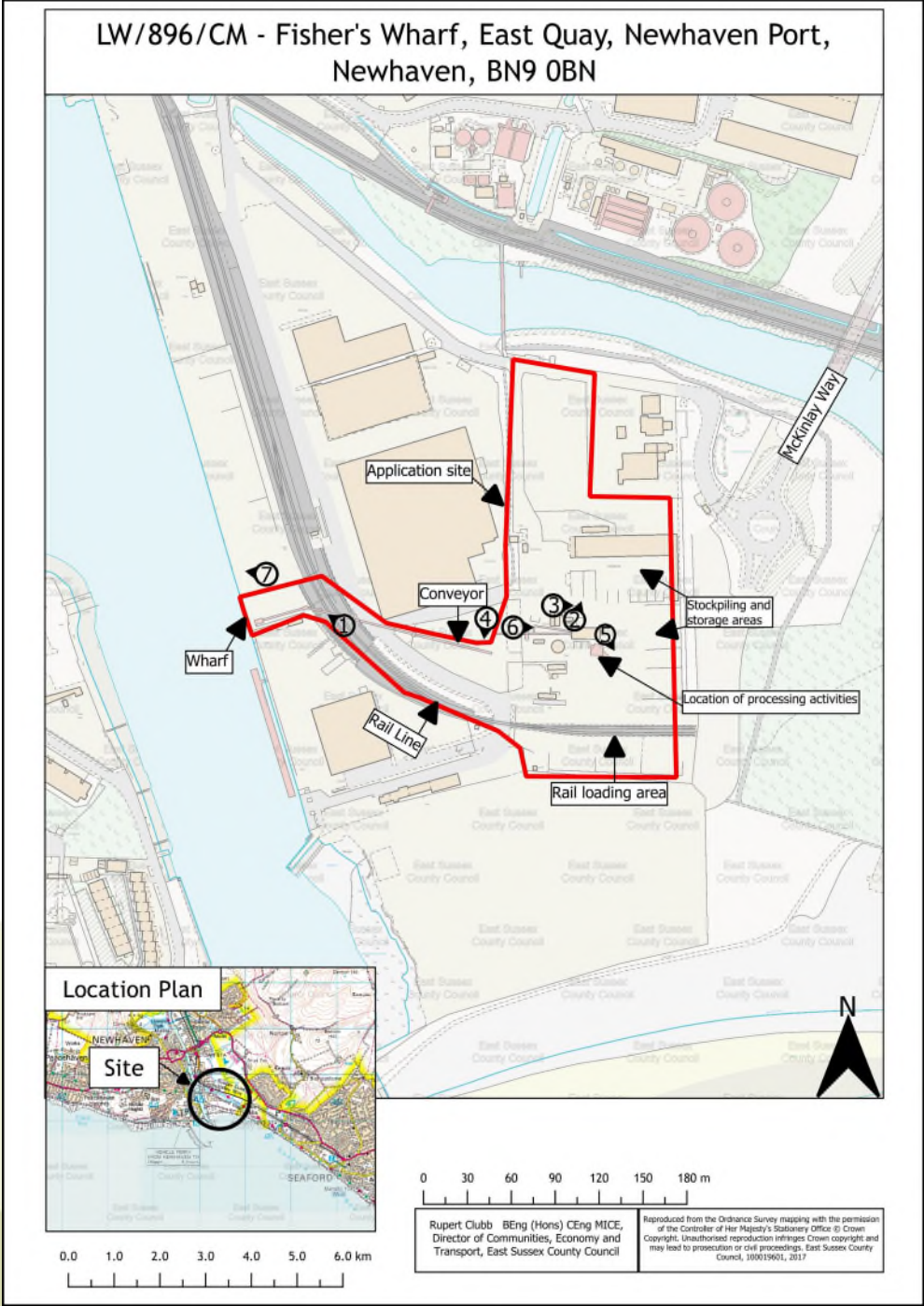
LW/896/CM - Fisher's Wharf, East Quay, Newhaven Port, Newhaven, BN9 0BN



0 30 60 90 120 150 180 m

Rupert Clubb BEng (Hons) CEng MICE,
Director of Communities, Economy and
Transport, East Sussex County Council

Reproduced from the Ordnance Survey mapping with the permission
of the Controller of Her Majesty's Stationary Office © Crown
Copyright. Unauthorised reproduction infringes Crown copyright and
may lead to prosecution or civil proceedings. East Sussex County
Council, 100019601, 2017



View 1 – Looking northwest towards wharf.

Page 6















LW/896/CM – Fisher's Wharf, East Quay, Newhaven Port, Newhaven BN9 0BN

Variation of Condition 3 of planning permission
LW/799/CM(EIA) to extend the hours of working

East Sussex County Council Planning Committee 17 September 2025

Page 14

East Sussex County Council Planning Committee 17 September 2025

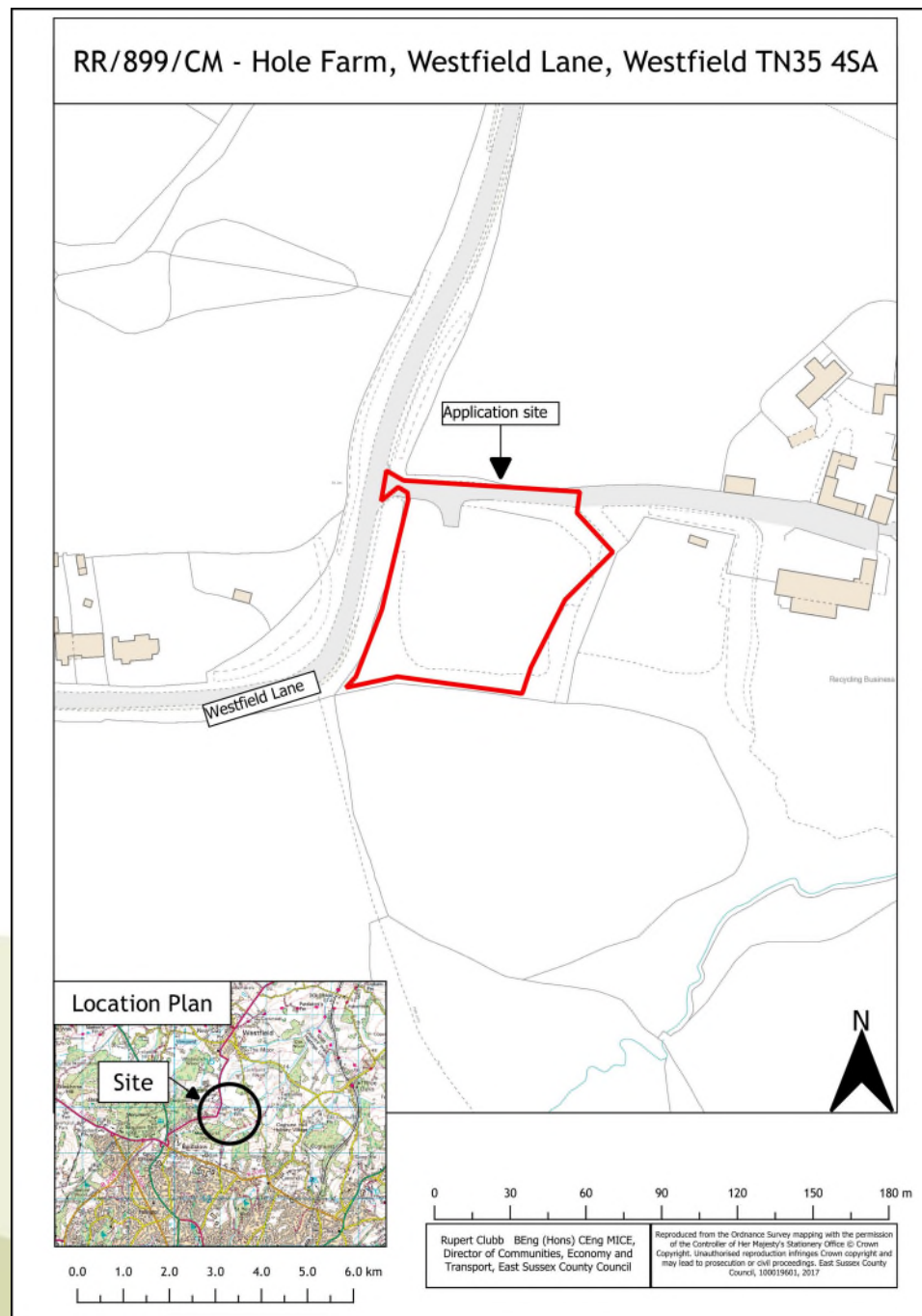
Page 15

RR/899/CM – Hole Farm, Westfield Lane, Westfield, TN35 4SA

Page 16

Use of land for the importation , deposit, storage & processing for recycling and recovery of skip waste comprising construction, demolition and excavation waste, commercial and industrial, and household waste (part retrospective) including construction of new concrete hardstanding and storage bays.

Location Plan



RR/899/CM - Hole Farm, Westfield Lane, Westfield TN35 4SA



Location Plan



0.0 1.0 2.0 3.0 4.0 5.0 6.0 km

0 30 60 90 120 150 180 m

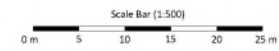
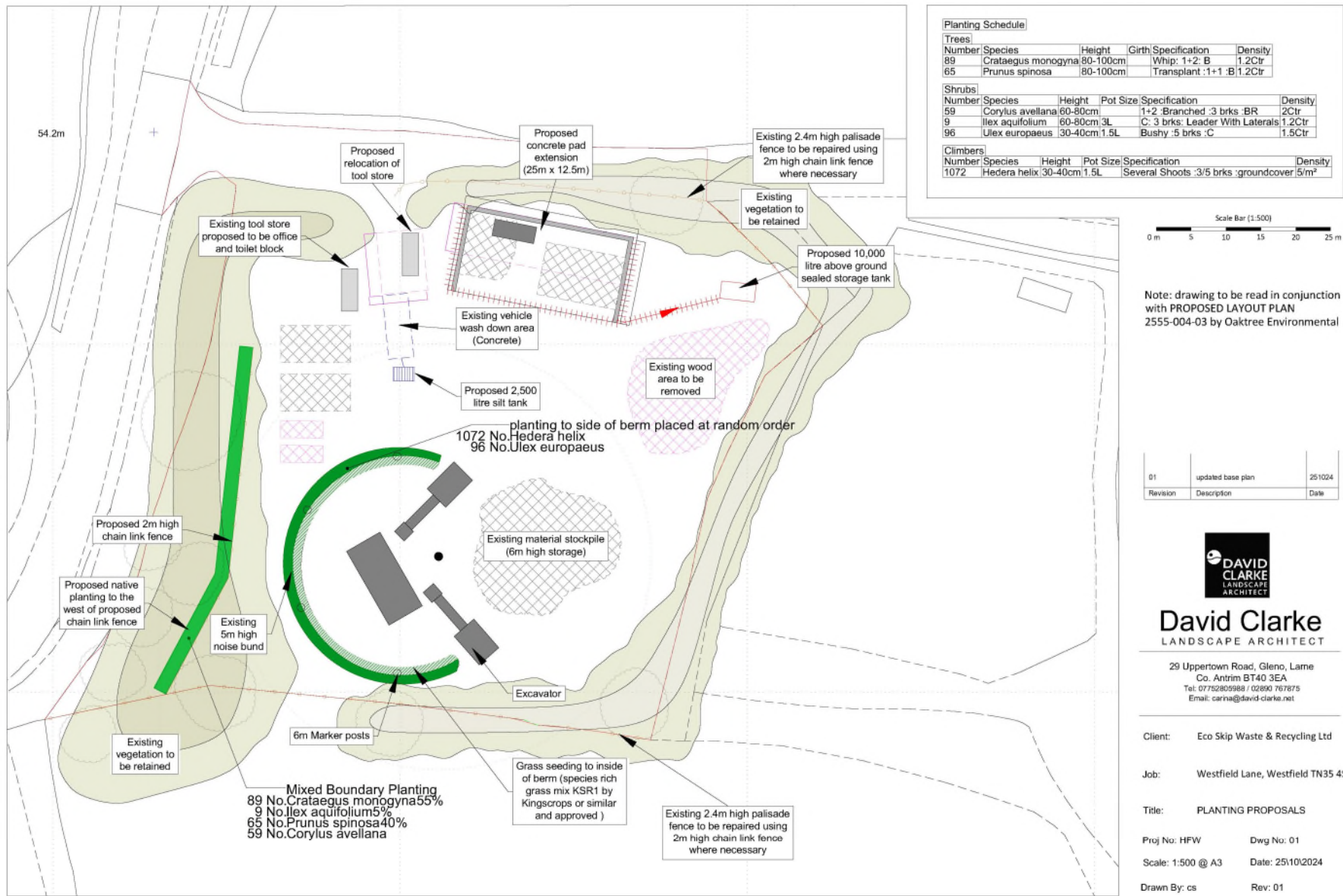
Rupert Clubb BEng (Hons) CEng MICE,
Director of Communities, Economy and
Transport, East Sussex County Council

Reproduced from the Ordnance Survey mapping with the permission
of the Controller of Her Majesty's Stationery Office © Crown
Copyright. Unauthorised reproduction infringes Crown copyright and
may lead to prosecution or civil proceedings. East Sussex County
Council, 100019601, 2017

Proposed Layout Plan



Proposed planting plan



Note: drawing to be read in conjunction with PROPOSED LAYOUT PLAN 2555-004-03 by Oaktree Environmental

01	updated base plan	25/10/24
Revision	Description	Date

David Clarke

LANDSCAPE ARCHITECT

29 Uppertown Road, Gleno, Lame
Co. Antrim BT40 3EA
Tel: 07752805988 / 02890 767875
Email: carina@david-clarke.net

Client: Eco Skip Waste & Recycling Ltd

Job: Westfield Lane, Westfield TN35 4SA

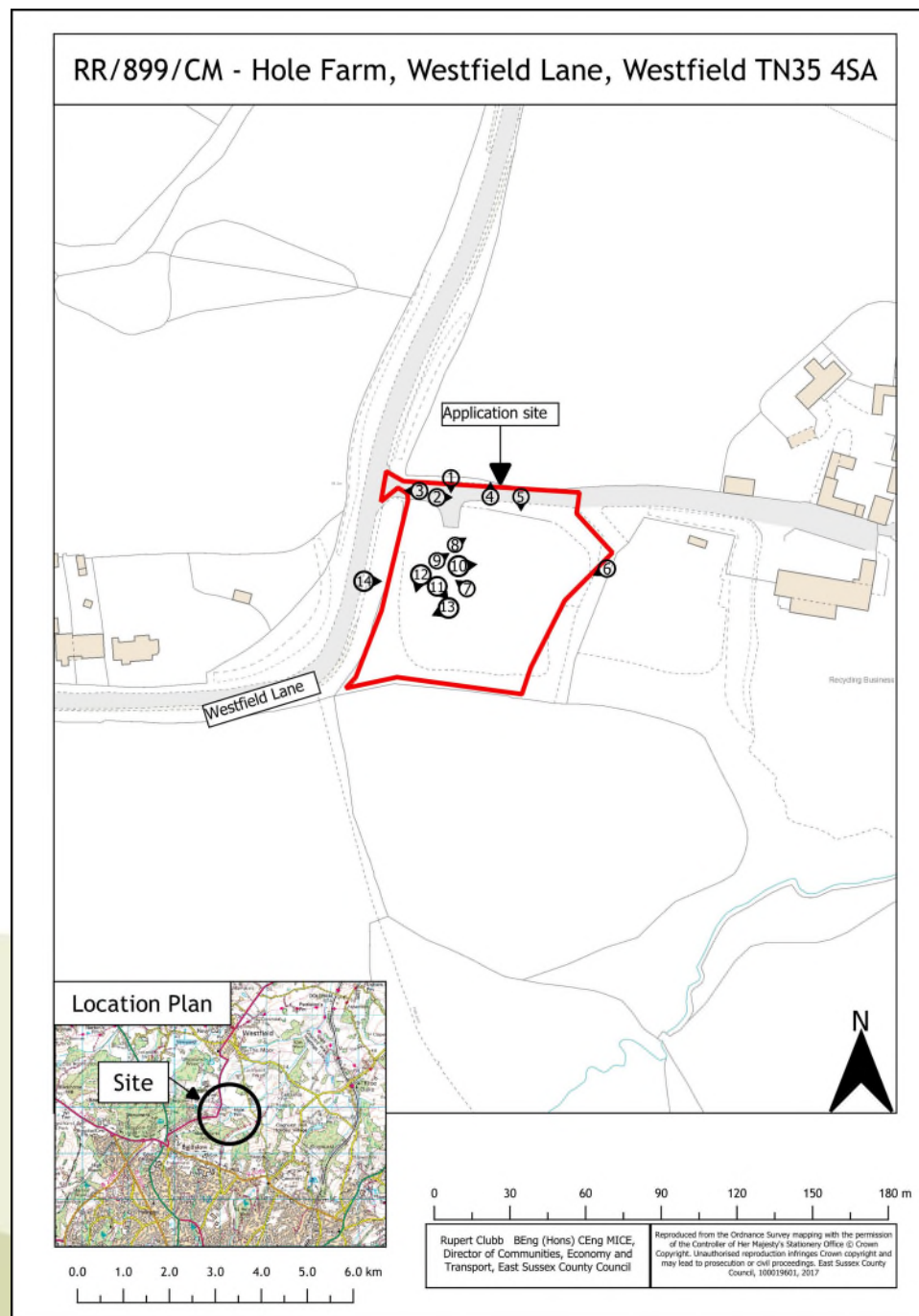
Title: PLANTING PROPOSALS

Proj No: HFW Dwg No: 01

Scale: 1:500 @ A3 Date: 25/10/2024

Drawn By: cs Rev: 01

Viewpoints Plan



View 1 – Looking south towards Site entrance (November 2024).





























RR/899/CM – Hole Farm, Westfield Lane, Westfield TN35 4SA

Page 36

Use of land for the importation , deposit, storage & processing for recycling and recovery of skip waste comprising construction, demolition and excavation waste, commercial and industrial, and household waste (part retrospective) including construction of new concrete hardstanding and storage bays.

East Sussex County Council Planning Committee 17 September 2025

Page 37

This page is intentionally left blank

East Sussex County Council Planning Committee 17 September 2025

Page 39

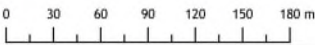
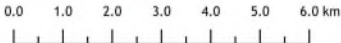
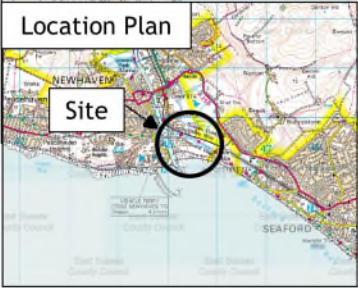
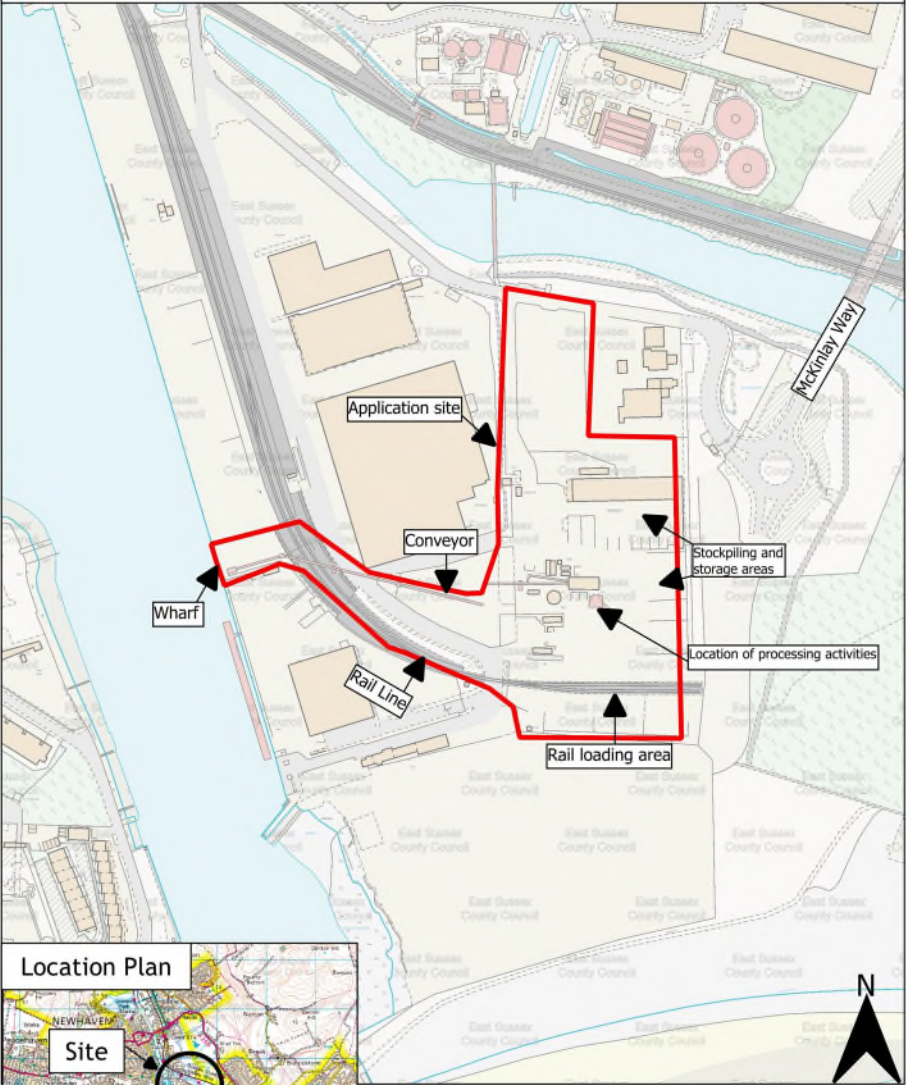
East Sussex
County Council



LW/896/CM – Fisher's Wharf, East Quay, Newhaven Port, Newhaven BN9 0BN

Variation of Condition 3 of planning permission
LW/799/CM(EIA) to extend the hours of working

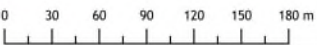
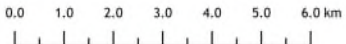
LW/896/CM - Fisher's Wharf, East Quay, Newhaven Port, Newhaven, BN9 0BN



Rupert Clubb BEng (Hons) CEng MICE,
Director of Communities, Economy and
Transport, East Sussex County Council

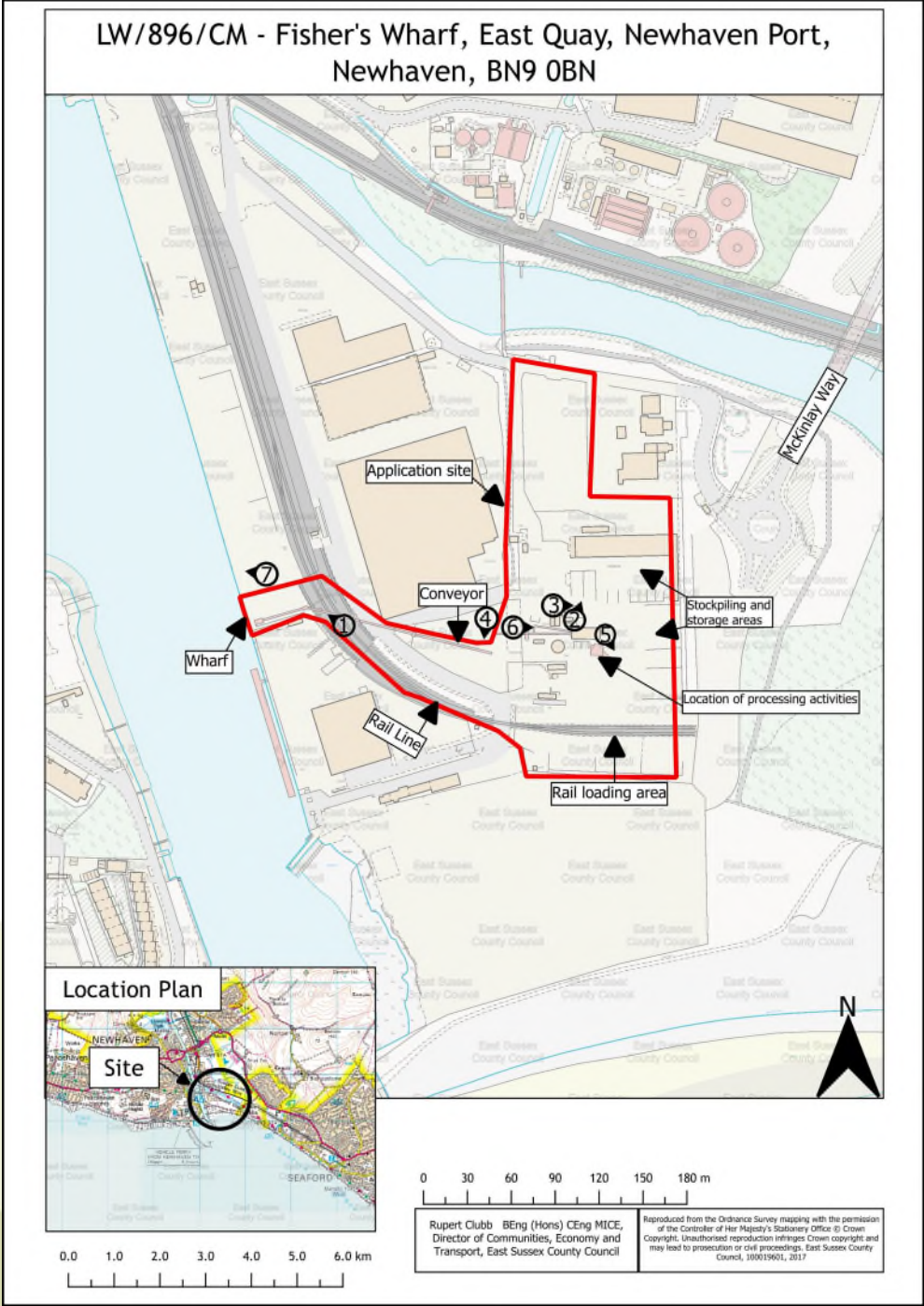
Reproduced from the Ordnance Survey mapping with the permission
of the Controller of Her Majesty's Stationery Office & Crown
Copyright. Unauthorised reproduction infringes Crown copyright and
may lead to prosecution or civil proceedings. East Sussex County
Council, 100519601, 2017

LW/896/CM - Fisher's Wharf, East Quay, Newhaven Port, Newhaven, BN9 0BN



Rupert Clubb BEng (Hons) CEng MICE,
Director of Communities, Economy and
Transport, East Sussex County Council

Reproduced from the Ordnance Survey mapping with the permission
of the Controller of Her Majesty's Stationary Office © Crown
Copyright. Unauthorised reproduction infringes Crown copyright and
may lead to prosecution or civil proceedings. East Sussex County
Council, 100019601, 2017



View 1 – Looking northwest towards wharf.

Page 44













Page 50



LW/896/CM – Fisher's Wharf, East Quay, Newhaven Port, Newhaven BN9 0BN

Variation of Condition 3 of planning permission
LW/799/CM(EIA) to extend the hours of working

East Sussex County Council Planning Committee 17 September 2025

Page 52

East Sussex County Council Planning Committee 17 September 2025

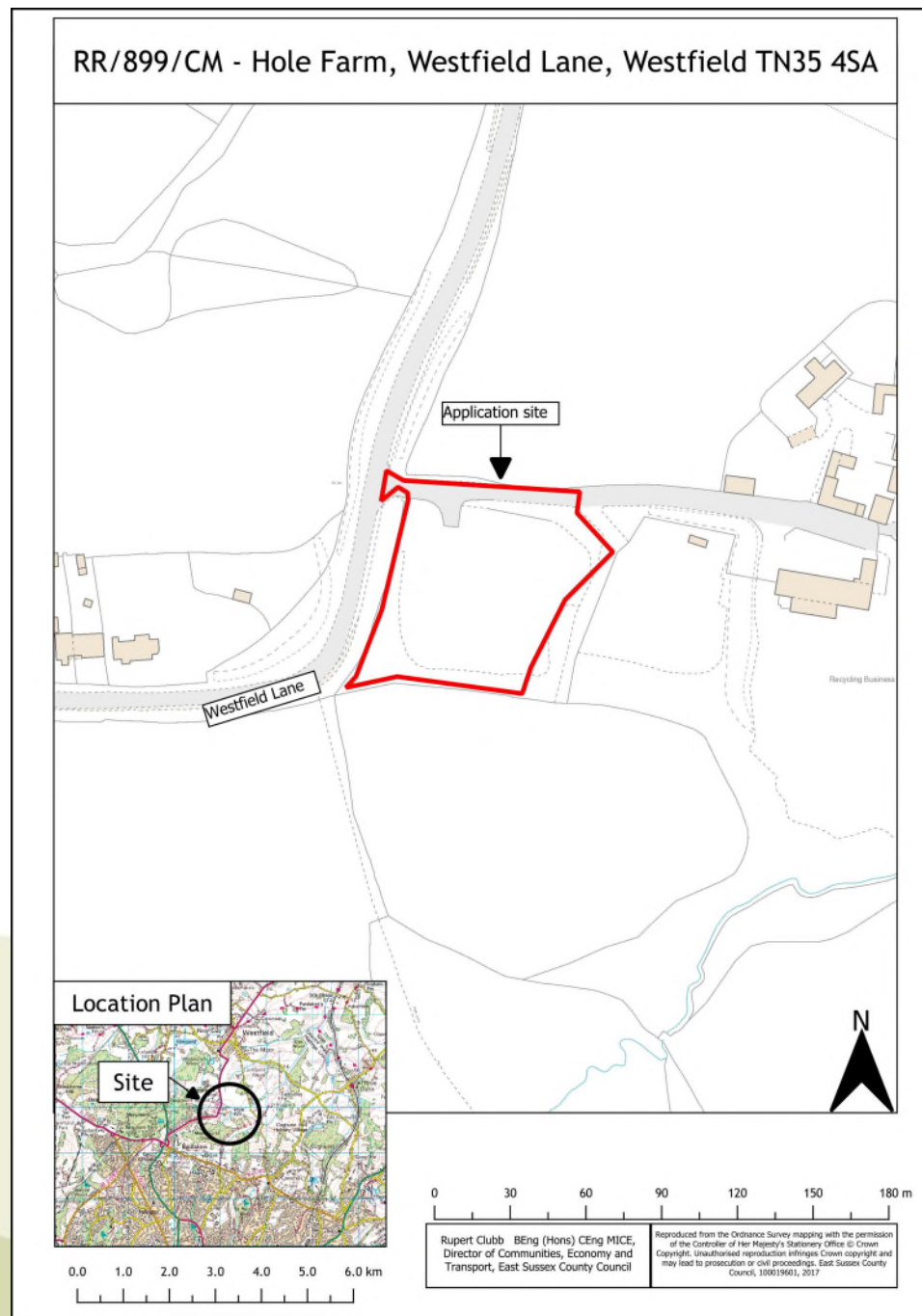
Page 53

RR/899/CM – Hole Farm, Westfield Lane, Westfield, TN35 4SA

Page 54

Use of land for the importation , deposit, storage & processing for recycling and recovery of skip waste comprising construction, demolition and excavation waste, commercial and industrial, and household waste (part retrospective) including construction of new concrete hardstanding and storage bays.

Location Plan



RR/899/CM - Hole Farm, Westfield Lane, Westfield TN35 4SA



Location Plan



0.0 1.0 2.0 3.0 4.0 5.0 6.0 km

0 30 60 90 120 150 180 m

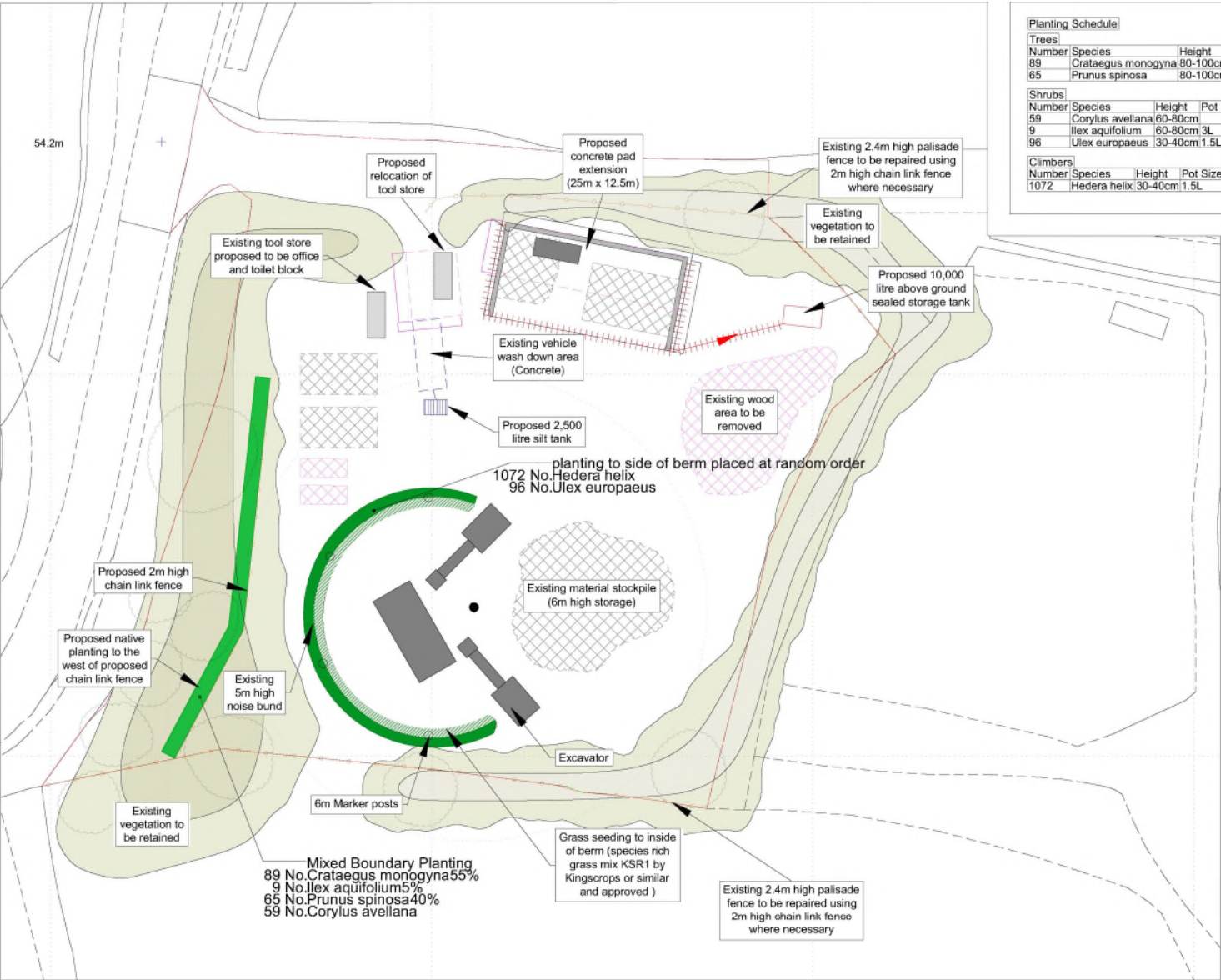
Rupert Clubb BEng (Hons) CEng MICE,
Director of Communities, Economy and
Transport, East Sussex County Council

Reproduced from the Ordnance Survey mapping with the permission
of the Controller of Her Majesty's Stationery Office © Crown
Copyright. Unauthorised reproduction infringes Crown copyright and
may lead to prosecution or civil proceedings. East Sussex County
Council, 100019601, 2017

Proposed Layout Plan



Proposed planting plan



Planting Schedule					
Trees					
Number	Species	Height	Girth	Specification	Density
89	<i>Crataegus monogyna</i>	80-100cm		Whip: 1+2: B	1.2Ctr
65	<i>Prunus spinosa</i>	80-100cm		Transplant :1+1 :B	1.2Ctr
Shrubs					
Number	Species	Height	Pot Size	Specification	Density
59	<i>Corylus avellana</i>	60-80cm		1+2 :Branched :3 brks :BR	2Ctr
9	<i>Ilex aquifolium</i>	60-80cm	3L	C : 3 brks : Leader With Laterals	1.2Ctr
96	<i>Ulex europaeus</i>	30-40cm	1.5L	Bushy :5 brks :C	1.5Ctr
Climbers					
Number	Species	Height	Pot Size	Specification	Density
1072	<i>Hedera helix</i>	30-40cm	1.5L	Several Shoots :3/5 brks :groundcover	5/m²



Note: drawing to be read in conjunction with PROPOSED LAYOUT PLAN 2555-004-03 by Oaktree Environmental

01	updated base plan	25/10/24
Revision	Description	Date

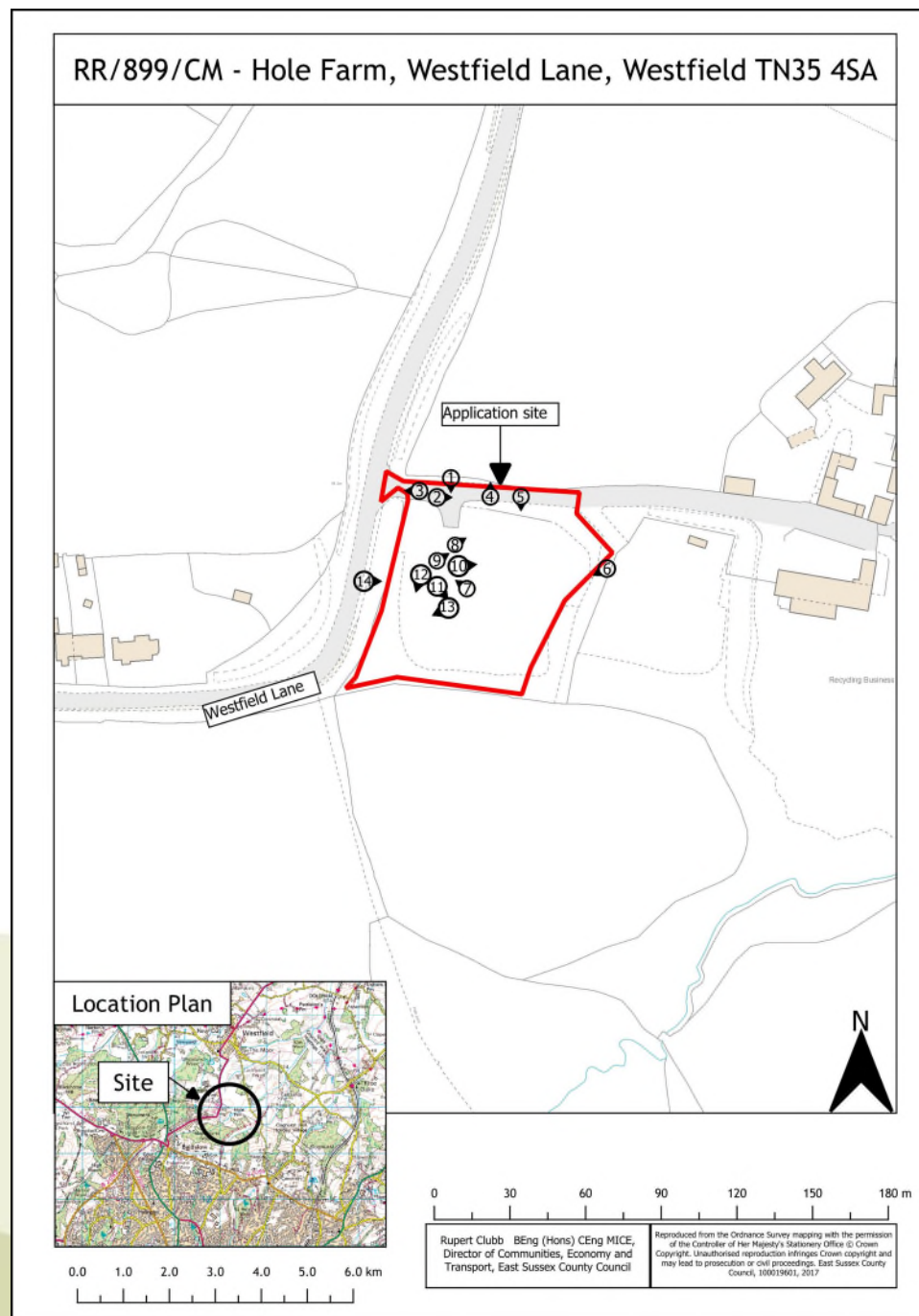
David Clarke

LANDSCAPE ARCHITECT

29 Uppertown Road, Gleno, Lame
Co. Antrim BT40 3EA
Tel: 07752805988 / 02890 767875
Email: carina@david-clarke.net

Client:	Eco Skip Waste & Recycling Ltd		
Job:	Westfield Lane, Westfield TN35 4SA		
Title:	PLANTING PROPOSALS		
Proj No:	HFW	Dwg No:	01
Scale:	1:500 @ A3	Date:	25/10/2024
Drawn By:	cs	Rev:	01

Viewpoints Plan



View 1 – Looking south towards Site entrance (November 2024).





























RR/899/CM – Hole Farm, Westfield Lane, Westfield TN35 4SA

Page 74

Use of land for the importation , deposit, storage & processing for recycling and recovery of skip waste comprising construction, demolition and excavation waste, commercial and industrial, and household waste (part retrospective) including construction of new concrete hardstanding and storage bays.

East Sussex County Council Planning Committee 17 September 2025

Page 75

This page is intentionally left blank