

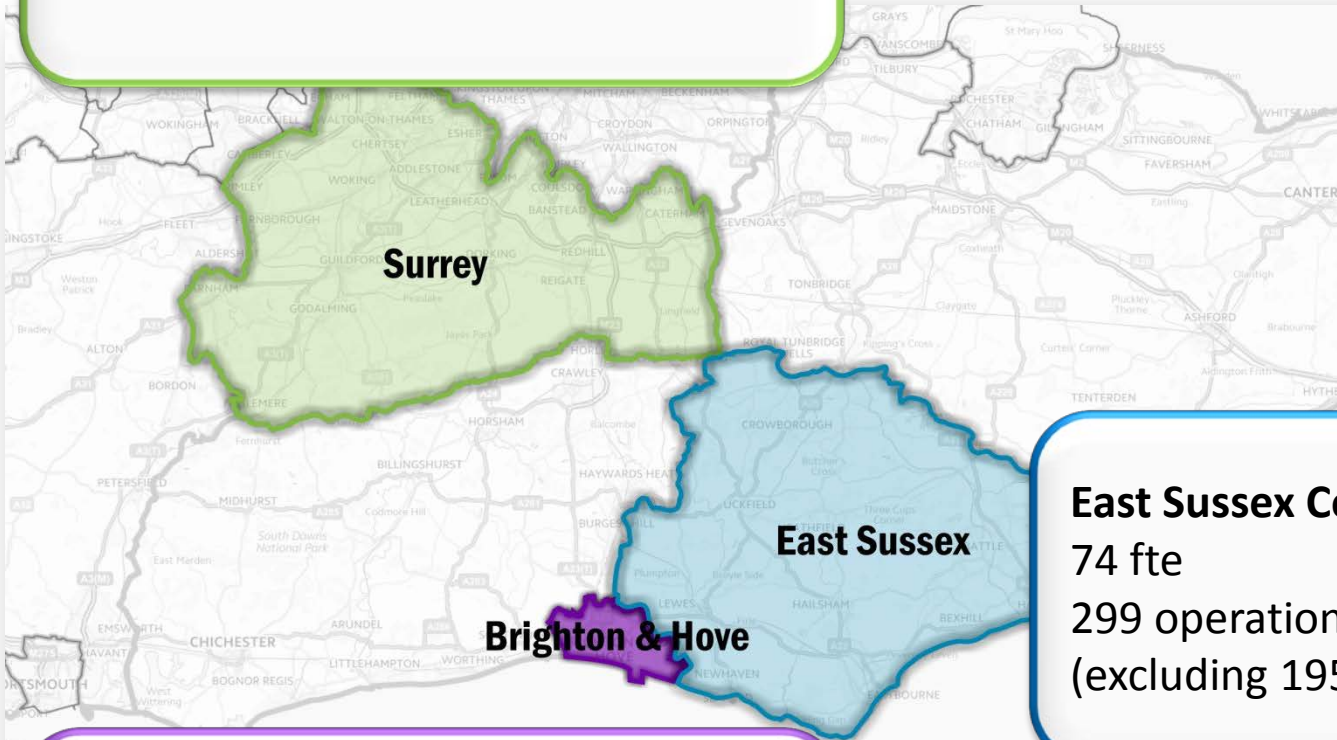
A large version of the Orbis logo, with the 'o' being a large, multi-colored ring and the letters 'rbis' in a bold green font. The logo is set against a background of overlapping, semi-transparent rainbow-colored arcs.

Property Service Update
July 2018

Surrey County Council

156 fte

317 operational buildings (excluding
412 schools)



East Sussex County Council

74 fte

299 operational sites
(excluding 195 schools)



Brighton & Hove City Council

103 fte

292 operational buildings (excluding
193 schools)



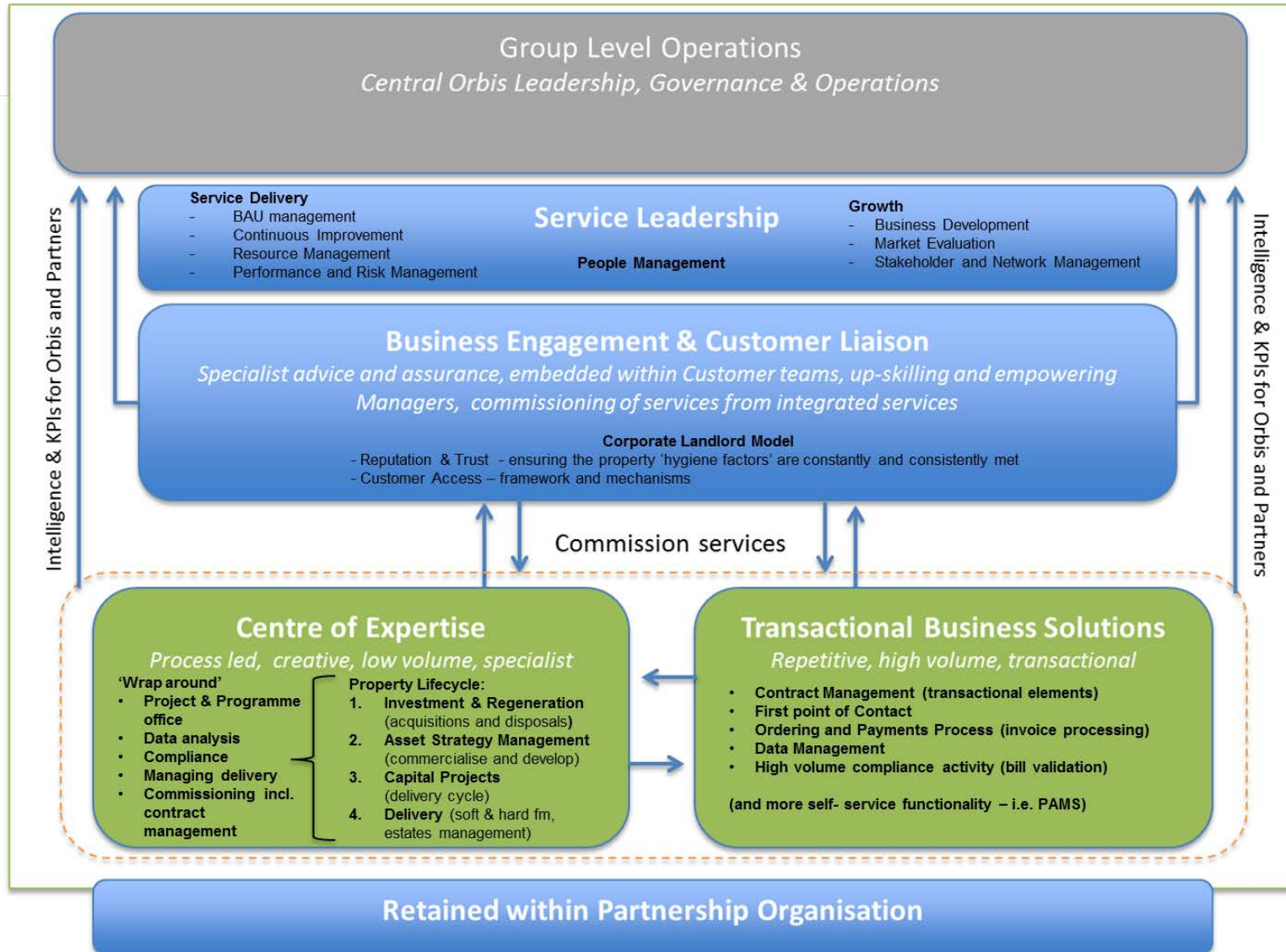


Property Services has responsibility for a variety of different types of requirements across the 3 sovereign authorities in extensive and diverse property portfolio of corporate, operational and non-operational premises.

Our service delivers every aspect of Property including designing new buildings and schools, managing, maintaining, refurbishing and adapting existing buildings, acquiring and selling property assets, and managing tenancies, leases and other agreements.

We are based across Surrey, East Sussex and Brighton and work together to get the best result for our communities.

Property Future Model



Senior Leadership Team



John Stebbings Chief Property Officer

Claire Barrett	Pete Hopkins	Angela Dymott	Keith Brown	Tina Glen	Peter Hall
Deputy Chief Property Officer	Lead Asset Strategy Manager	Assistant Director, Property & Design	Schools & Capital Programmes Manager	Head of Property Operations	Investment & Disposal Manager
Responsible for deputising for the Chief Property Officer, Sovereign Lead for SCC, the Estates Function, the Maintenance Teams including the Helpdesk, The Programme Team, The Commercial Team and the System and Services delivery teams which include Project Support, across SCC & ESCC	Responsible for the Joint Venture project in SCC, non schools projects and assets projects across SCC & ESCC. Responsible for effective forward planning and implementation of strategic changes in the organisation's estate to meet corporate and service priorities.	Responsible for the Property Function across BHCC. Sovereign Lead for BHCC	Responsible for running and delivery of the schools programme across ESCC & SCC.	Sovereign Lead for ESCC. Responsible for the Maintenance Function across SCC & ESCC, including the Area Facilities Officers, reception ,Contract Management and Arb services,.	Responsible developing, delivering and monitoring the investment and disposal strategy across ESCC and SCC in accordance with each organisation's specific investment, income and regeneration objectives.

Sovereign Requests and Requirements

Orbis 2021: Business Priorities

Future of Orbis Property: Vision and Direction

Serve Our Customers

Place the customer at the heart of everything we do

Customer Access Strategy

Develop our People

Have a workforce who are proud and passionate and given the opportunity to succeed and flourish

Career Development

Staff Engagement

Create conditions for success

Embed a partnership culture, empowering our people to make decisions based on the right thing for our business and our customers

Standardised Processes

Comms Strategy

Orbis Property Services

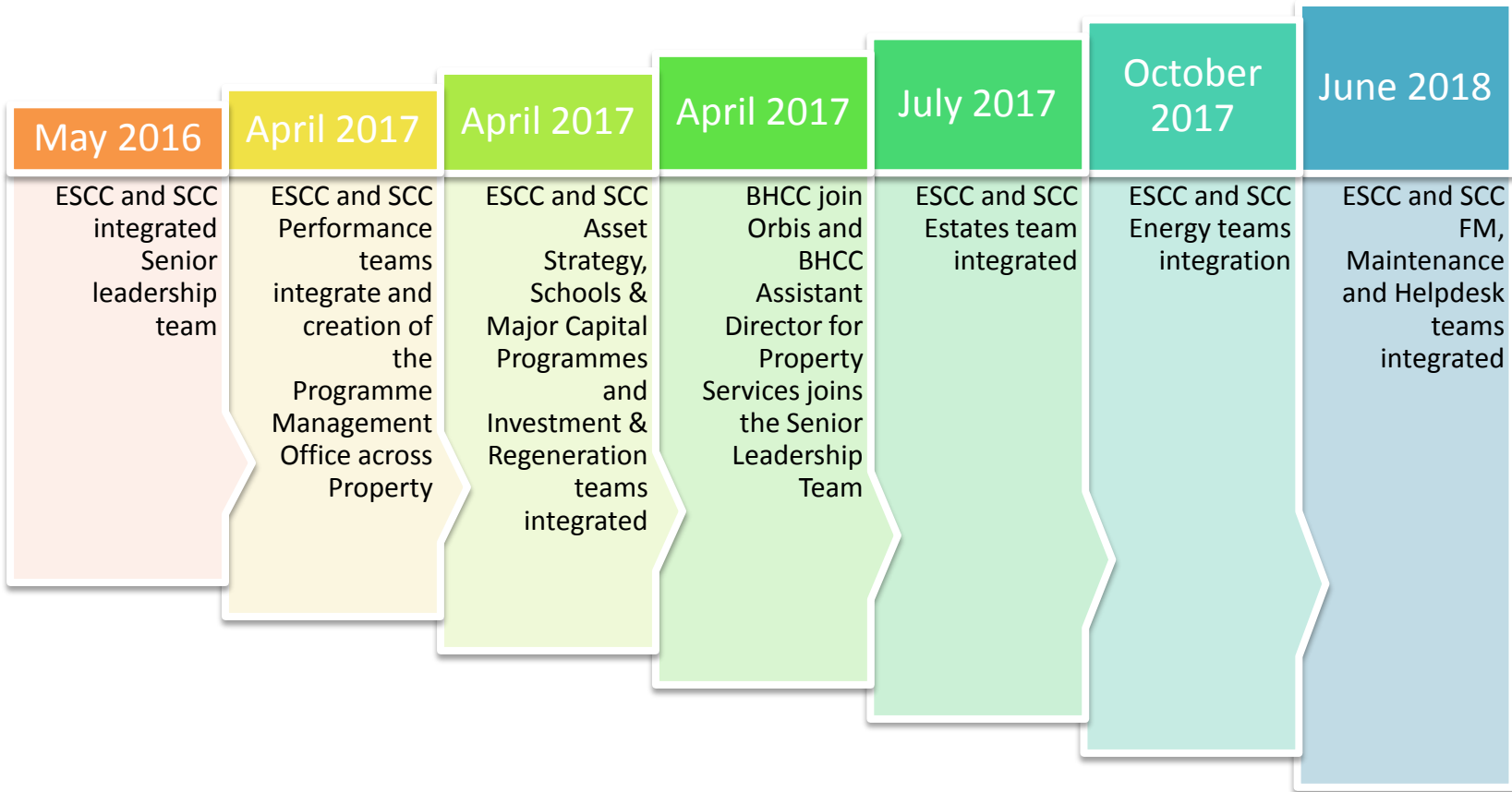
“One Professional Property Service for the public sector”: What this means to us

- ✓ A service that people want to join
- ✓ Being resilient through financial sustainability, a shared infrastructure and shared business processes
- ✓ Focus on what we can do, not what we can't
- ✓ One team, one approach, one Orbis
- ✓ Demonstrating and sharing our successes
- ✓ A service that staff feel proud to work for
- ✓ Strong relationships with our customers across the public sector ensuring there are clear routes to access our services
- ✓ Being part of and influencing a unique new model of delivery for the public sector (the compelling alternative)
- ✓ Learning from each other

Timeline



April 2015: Orbis Launch SCC & ESCC



June 2018: Delivering the model for Orbis Property to 2021 as one Property Function

Efficiencies

	2016/17		2017/18		2018/19	
	Target	delivered	*Target	delivered	Target	delivered
Orbis	-96	-96	-906	-906	-901	
SCC	-955	-955	-740	-740	-360	
BHCC	-789	-789	-1437	-952	0	
ESCC	-144	-144	-74	-74	0	
	-1984	-1984	-3157	-2672	-1261	0

Additional one-off savings		
16/17	17/18	18/19
- 620	- 52	
- 2,365	- 1,754	
-	-	
- 1,016	- 761	
- 4,001	- 2,567	-

Key Successes

Awards

- Cradle Hill Primary School, Seaford (ESCC)– secured “Innovation in Project Delivery” at the NFB Awards 2018 ceremony and also secured Performance Beyond Compliance – for the Considerate Constructors Scheme.
- Hastings Library (ESCC) - achieved the Considerate Constructors Scheme Bronze Award (Grade II listed heritage refurbishment project)
- New Teaching block and Reigate Parish School (SCC) achieve the Award for Excellence in Architectural Technology
- Grade II listed windmill has been awarded the 2017 Public & Community Award from the Sussex Heritage Trust (BHCC)

Structure

- Fully integrated Senior Leadership Team
- Fully Integrated Property teams across ESCC & SCC as in line with original business plan

People

- Property Staff Engagement Group is operating across all three partners
- EPIC Behaviour of the month celebrated in the monthly newsletter, now implemented across all Orbis as part of the 'naturally epic campaign'

Partnership Projects

- Hard FM Strategy developed across all three partners. Schedule go-live Spring 2019
- Soft FM Strategy developing across all three partners

Key Challenges

- Balancing travelling time v business needs
- Differing organisational requirements
- Managing political changes
- Embedding of cross authority structures
- Integrating IT systems & the ability to work seamlessly across the partnership