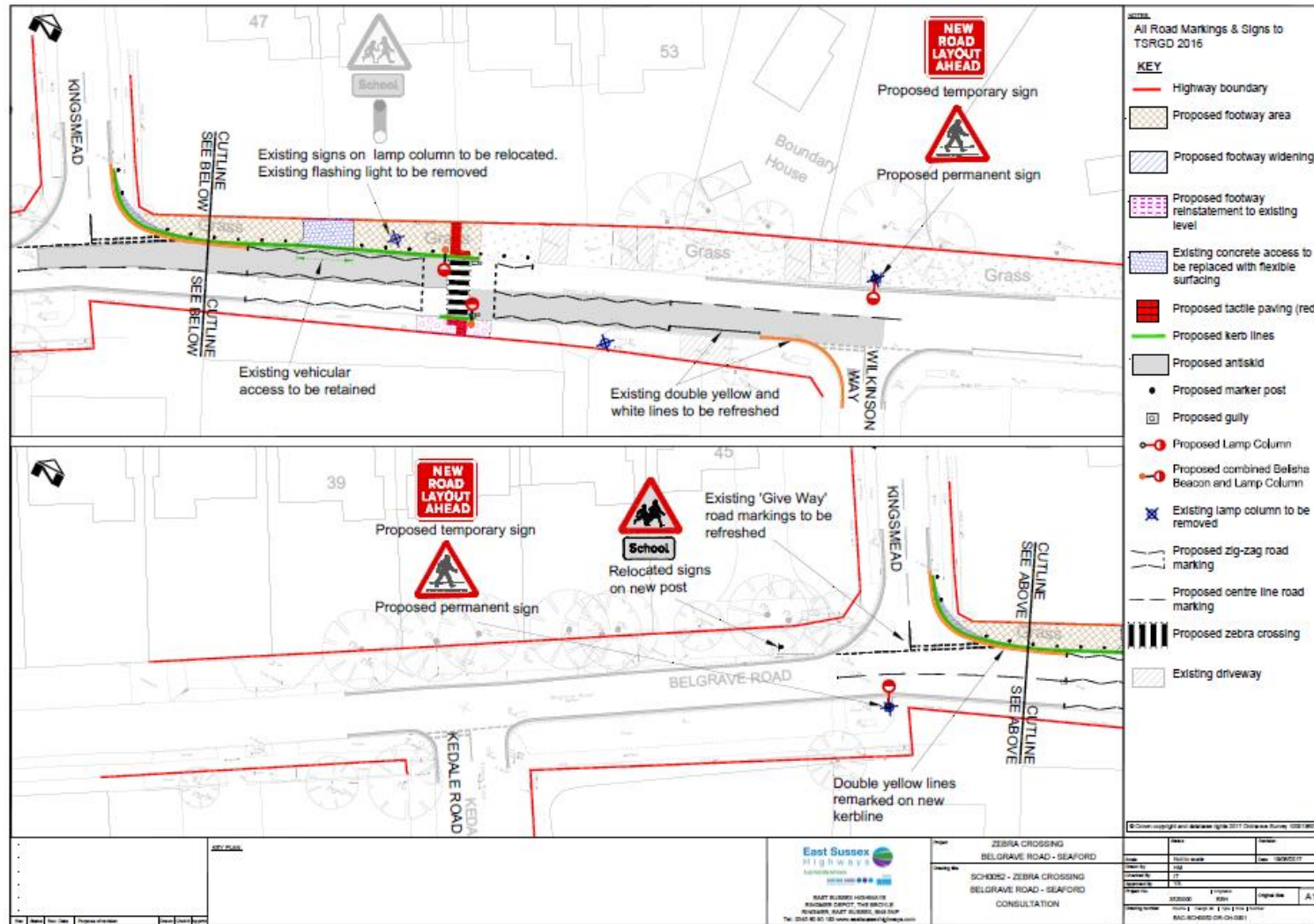
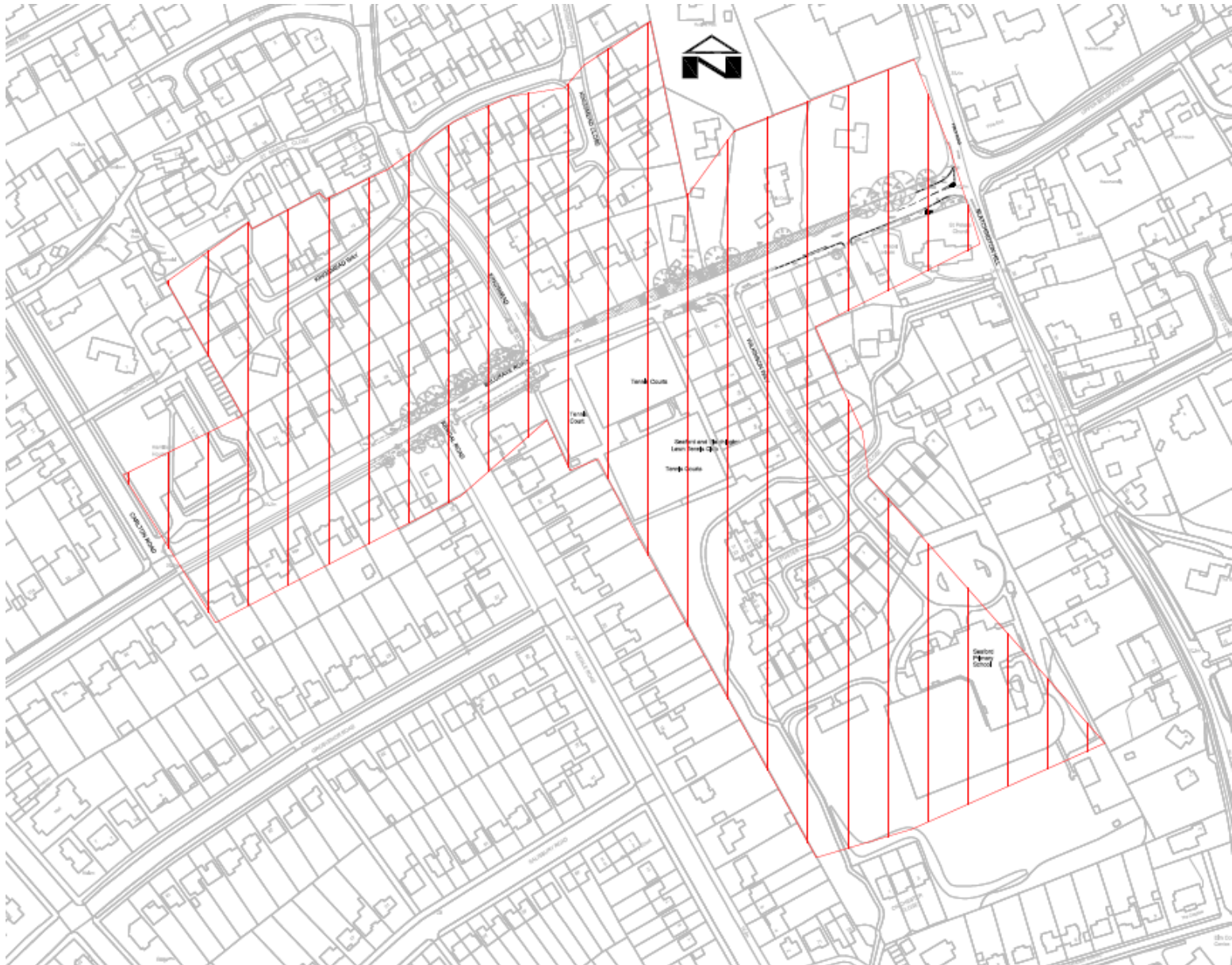


Appendix 2: Consultation plan, Consultation letter and map showing the letter drop extent





Consultation letterdrop extent

INFORMATION ON PROPOSED PEDESTRIAN CROSSING FACILITY IN BELGRAVE ROAD, SEAFORD

8 August 2017

Dear Resident,

I am writing to let you know about a proposal to introduce a new pedestrian crossing on Belgrave Road between the junctions with Kingsmead and Wilkinson Way.

As you will be aware, there is a need for residents to cross this busy road to access local facilities including Seaford Primary School and currently there is no dedicated crossing to assist them. East Sussex Highways has undertaken a study to identify the most appropriate location for a “Zebra” pedestrian crossing to be introduced, which is to the east of the junction with Kingsmead. We are now in a position to advise on the proposal and we are contacting you because you live in the vicinity of the proposed works.

The attached drawing shows the proposal which includes:

- New street lighting columns.
- Zebra crossing with Belisha beacons on lighting columns
- New footway on the northeast side of the Belgrave Road and Kingsmead junction.
- New road signs and road markings, including white zig-zag markings on both approaches to the crossing to prohibit parking and ensure the crossing operates safely.

The scheme will be funded through the County Council’s Capital Programme for Local Transport Improvements 2017/18, and we anticipate undertaking the works in early 2018.

If you have any comments about these safety improvements, please do contact us by Tuesday 29th August 2017. You can contact us by emailing at customer@eastsussexhighways.com or by calling us on 0345 60 80 193.

Yours faithfully,

Younas Abedin | Project Manager
Highways | East Sussex Highways