

What are we going to do?

VISION 2025

Better Health and Care For All

System Imperatives

Better & Equal Outcomes

Financial Sustainability

Social & Economic Growth

Strategic Goals

Starting Well

Children will have the best start in life

- ▼ We will delay the onset of illness in the most deprived 20% of the population
- ▼ We will reduce the rates of hospital stays for self harm amongst young people

Living Well

People will stay healthy for longer, with a reduction in inequalities

- ▼ We will delay the onset of cancer, respiratory and cardiovascular diseases
- ▼ We will improve the health of those with a Serious Mental Illness or Learning Disability

Ageing Well

People will be supported in their homes and communities by integrated services

- ▼ We will improve the health and care for those with cancer, respiratory & cardiovascular diseases
- ▼ We will reduce the years spent in ill health

Waiting Less

People will wait less to access the services they need

- ▼ Same day appointments in primary care will be available to those in need
- ▼ No one will wait more than 18 weeks for a hospital appointment and all emergency care access standards will be met

By 2025...our improvements in health outcomes will measure in the top quartile of all ICSs in England

Priority Enablers

System Leadership and Change

Digital, Data and Analytics

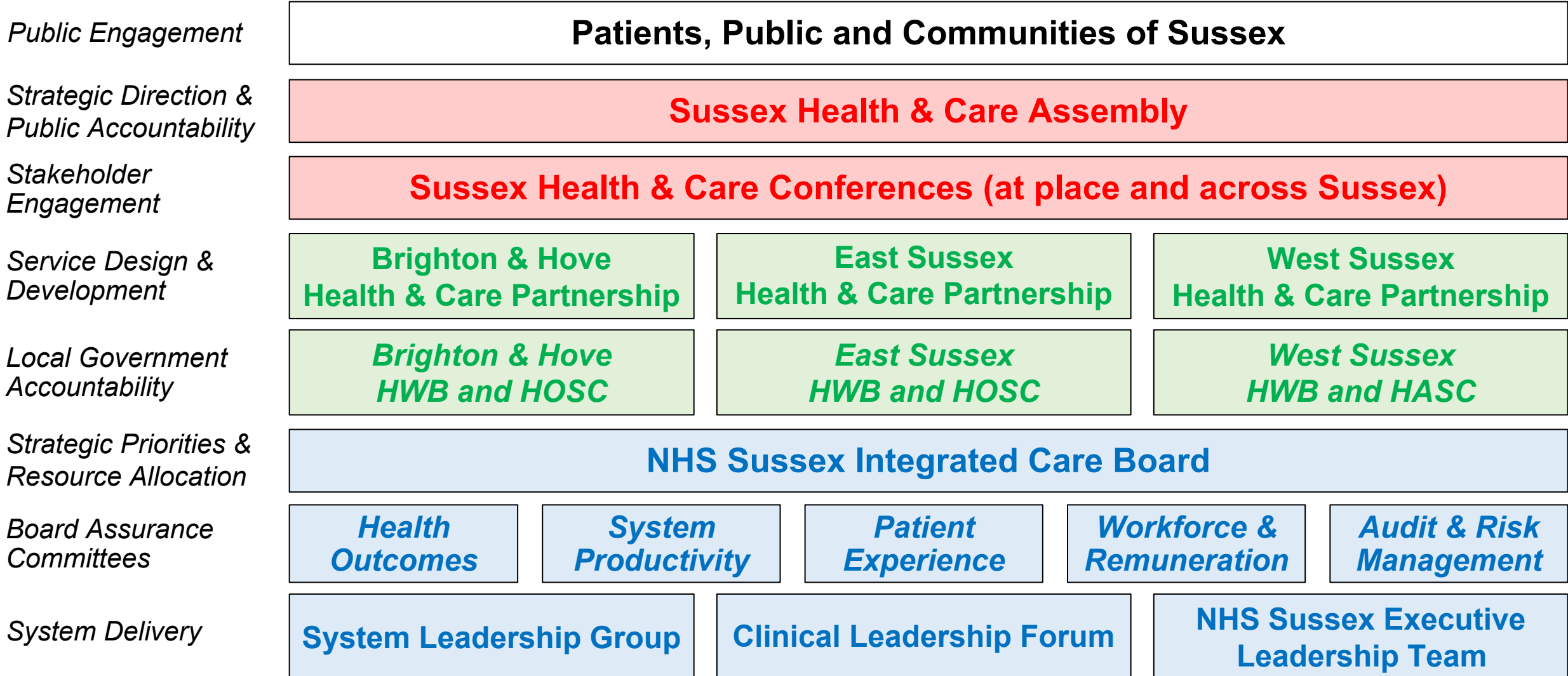
Workforce Transformation

Research and Innovation

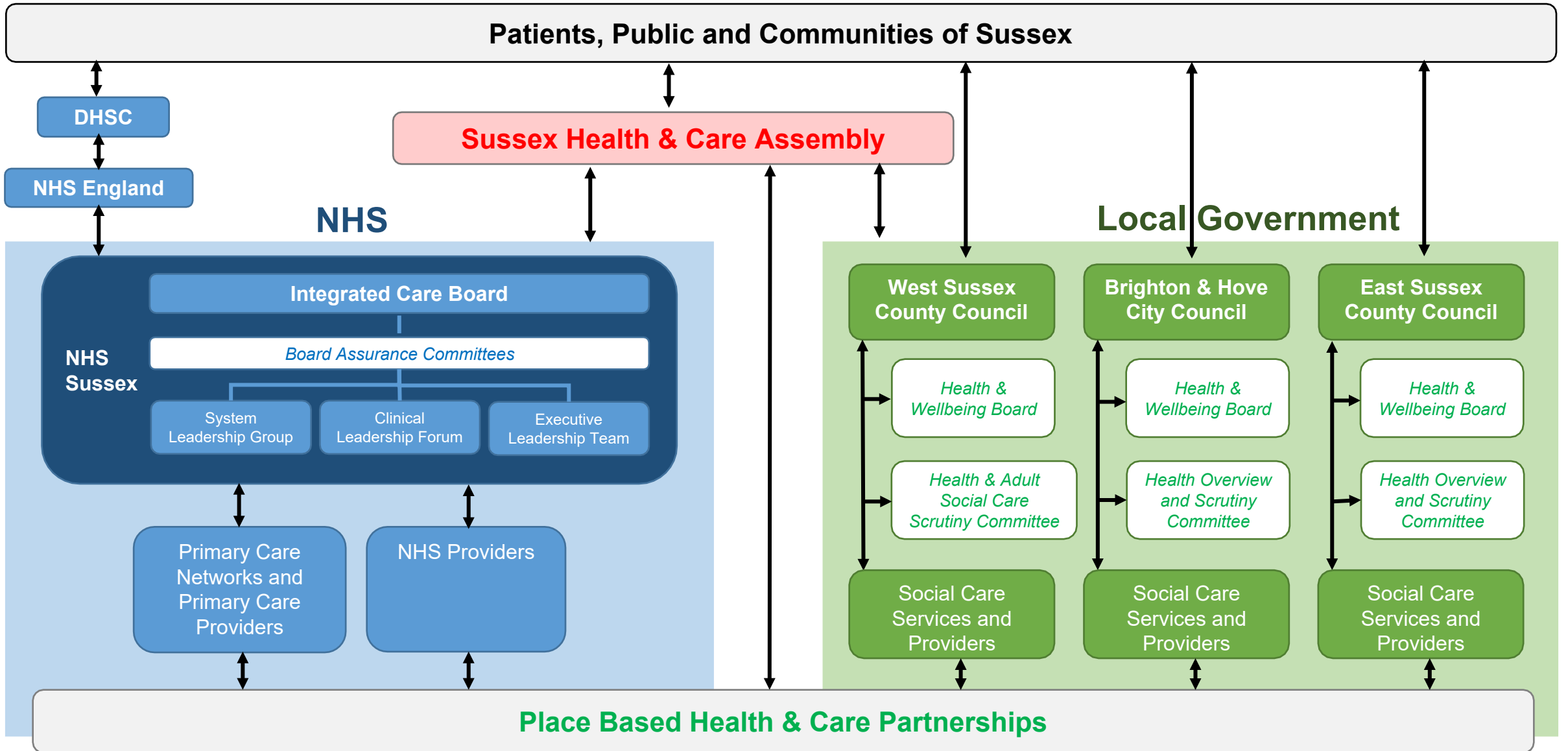
Public Involvement and Communication

How are we going to organise ourselves?

Core Purpose



How will accountability flow?



Who is going to be involved in providing strategic direction and oversight?

Sussex Health & Care Assembly

NHS Sussex Members	1. NHS Sussex Chair 2. NHS Sussex CEO
Local Government Members	3. BHCC HWB Chair# 4. ESCC HWB Chair# 5. WSCC HWB Chair#
Place Health & Care Partnership (HCP) Members	6. B&H HCP Executive 7. B&H HCP Clinician 8. ES HCP Executive 9. ES HCP Clinician 10. WS HCP Executive 11. WS HCP Clinician
Patient Representative Members	12. Healthwatch B&H CEO 13. Healthwatch ES CEO 14. Healthwatch WS CEO
Specialist Members	15. VSCE Member 16. Education Member

Elected members may bring an officer to support them

NHS Sussex Integrated Care Board

Chair and Independent Non-Executive Members**	1. NHS Sussex Chair 2. Independent NED (Health Outcomes) 3. Independent NED (System Productivity) 4. Independent NED (Patient Experience) 5. Independent NED (Workforce & Remuneration) 6. Independent NED (Audit & Risk Management)
Executive Members	7. NHS Sussex Chief Executive Officer 8. NHS Sussex Chief Finance Officer 9. NHS Sussex Chief Medical Officer 10. NHS Sussex Chief Nursing Officer 11. NHS Sussex Chief Primary Care Officer
Partner Members**	12. Primary Care Member*** 13. NHS Provider Member 14. Brighton & Hove City Council Director* 15. East Sussex County Council Director* 16. West Sussex County Council Director*

* Local Authorities to determine membership to achieve mix of skills and expertise

** Chair, non-executive and partner roles are appointed for a fixed term of office

*** Sussex PCNs to determine one leader to provide primary care perspective