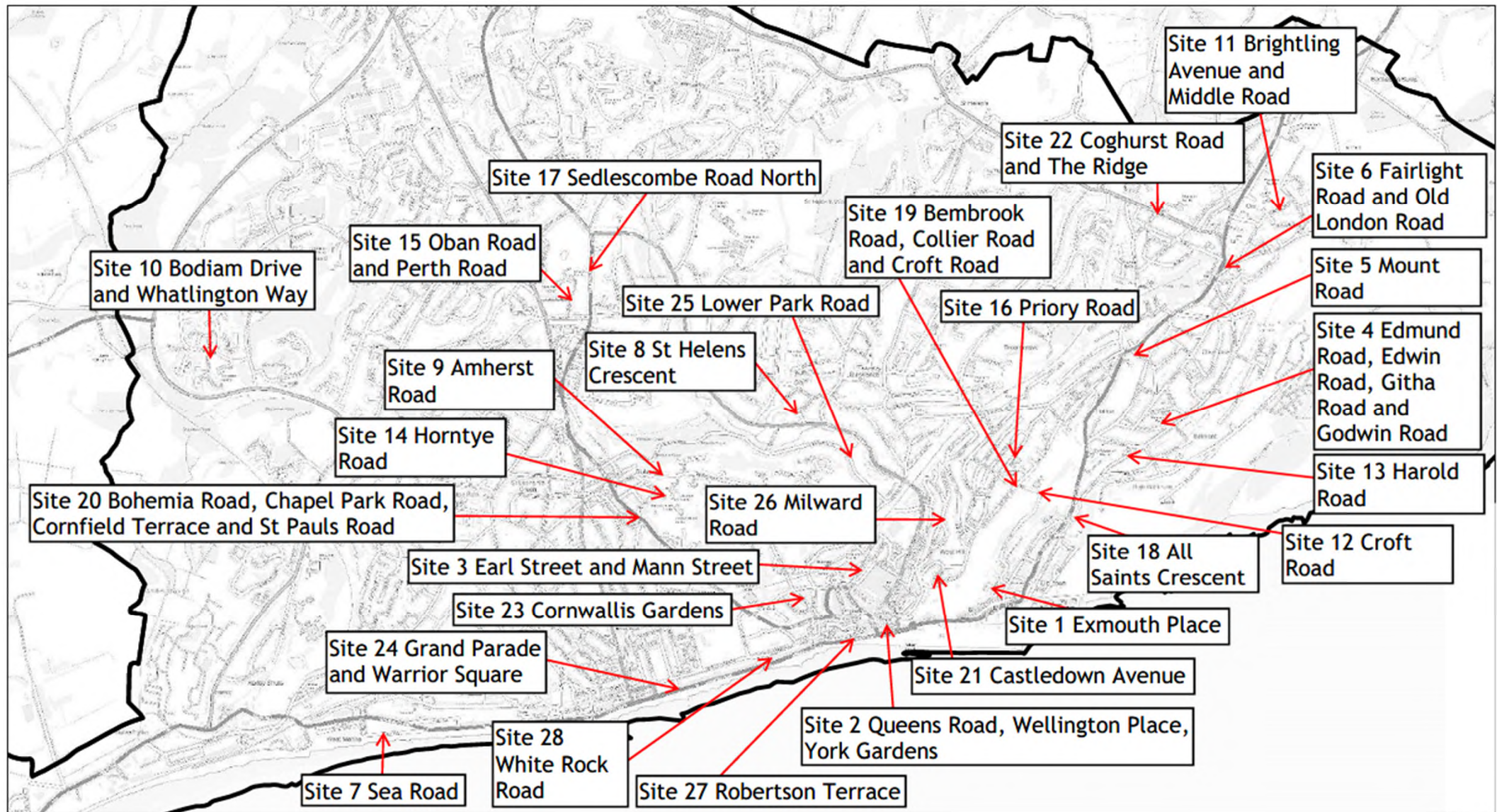
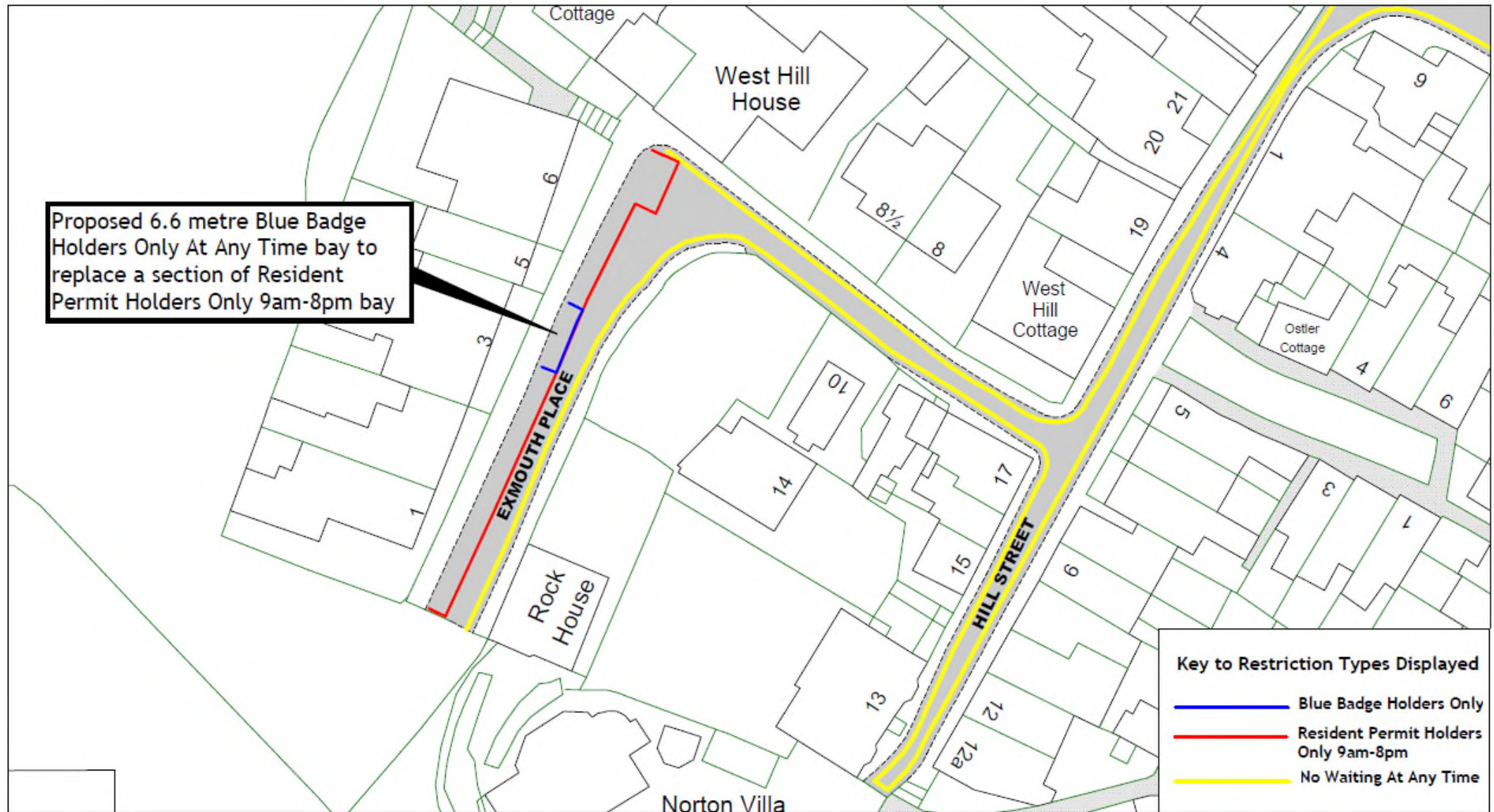
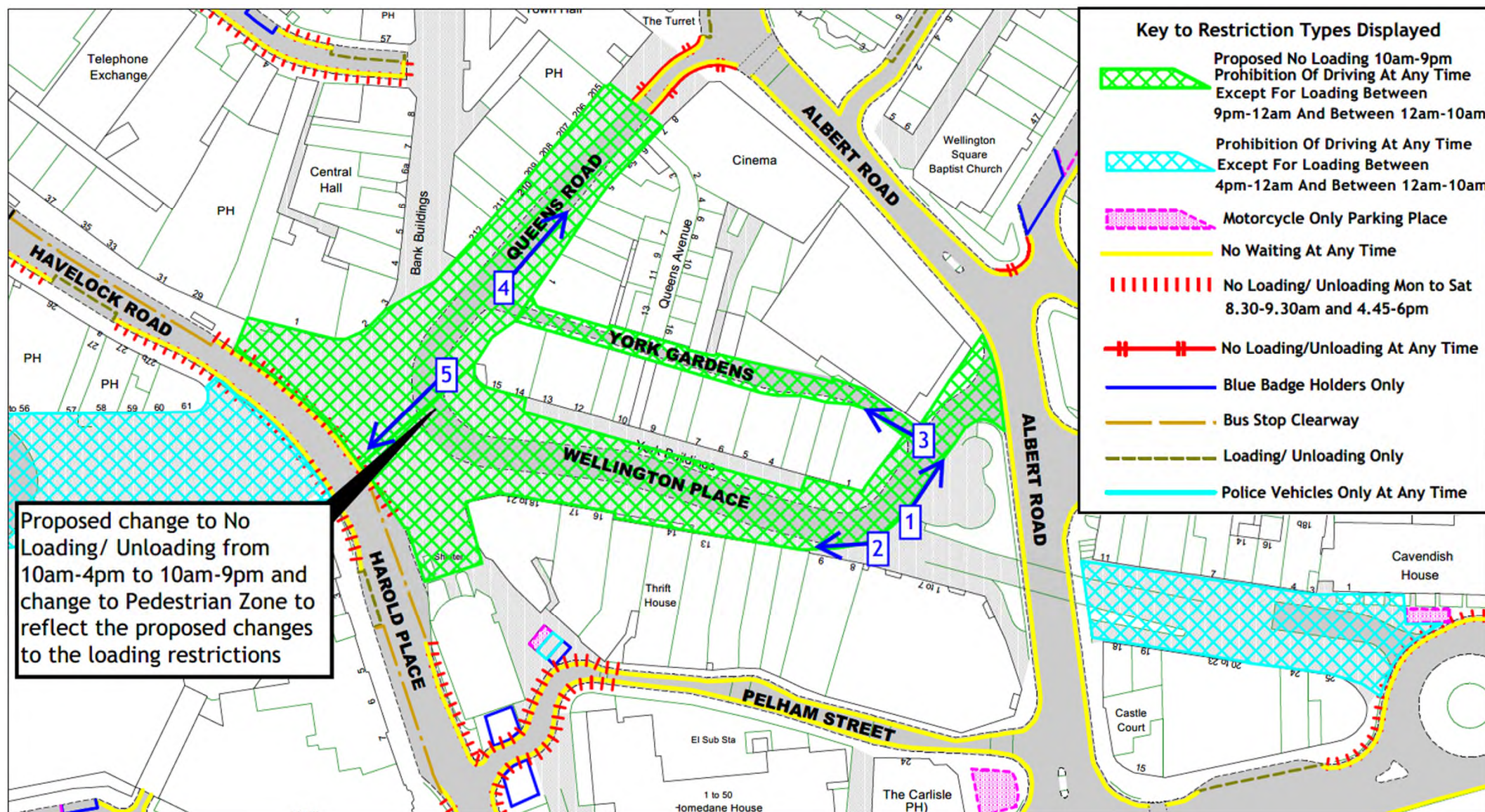


Traffic Regulation Order: Hastings Parking Review 2022-2023

Objections received to changes to parking and waiting restrictions proposed during the latest parking review in Hastings District









View 2 - Looking west along Wellington Place from outside 1-7 Wellington Place

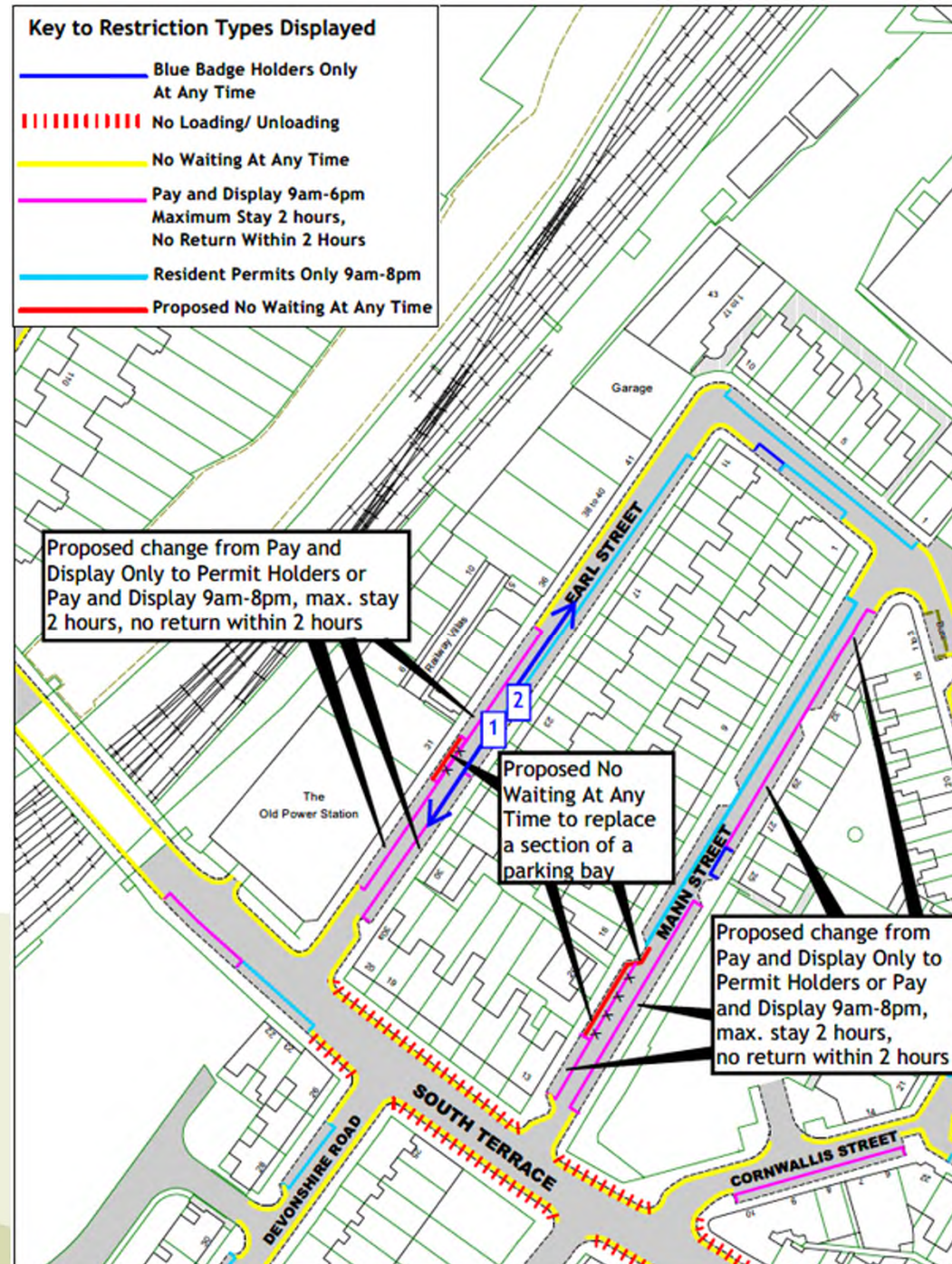
32

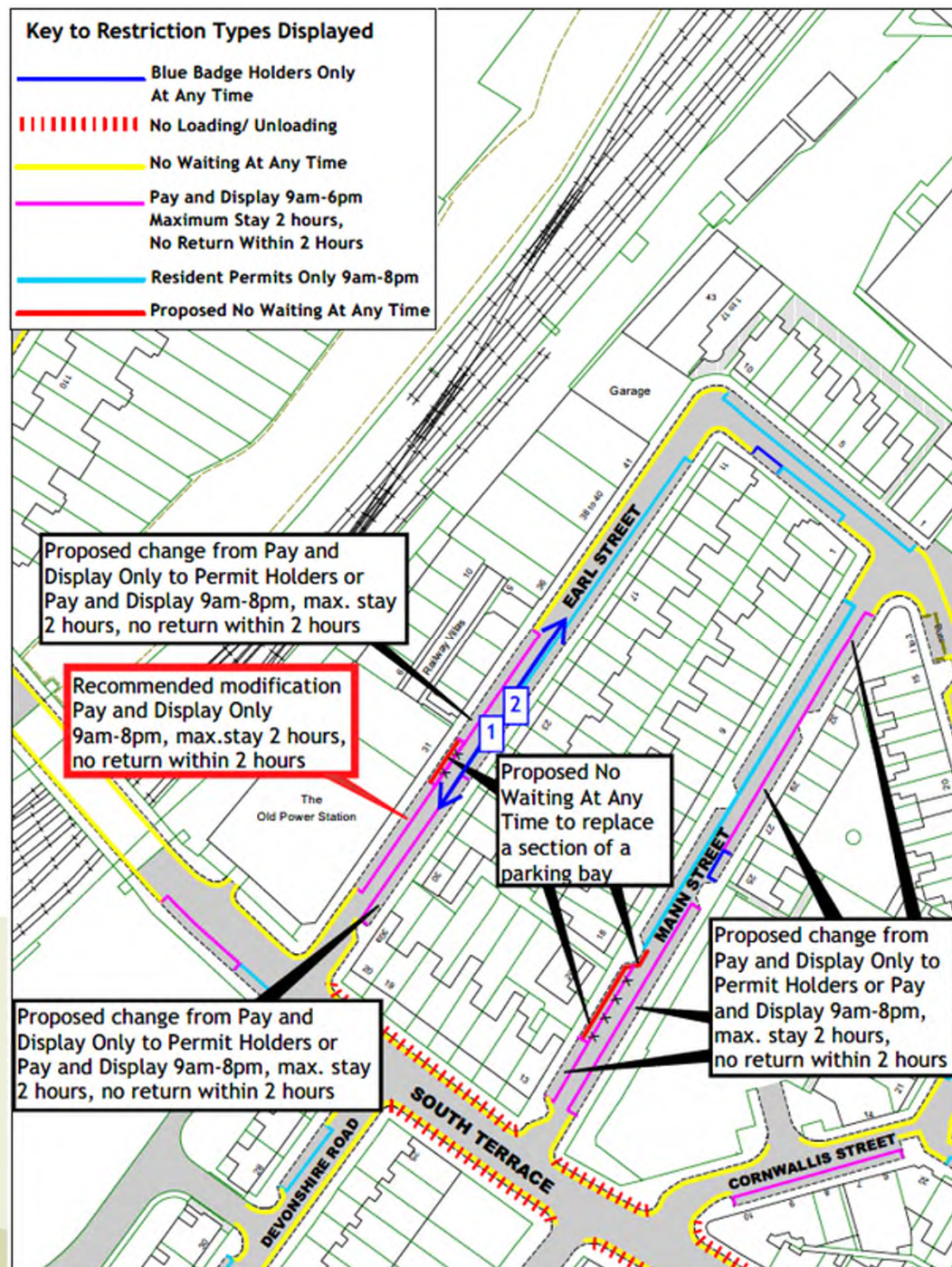






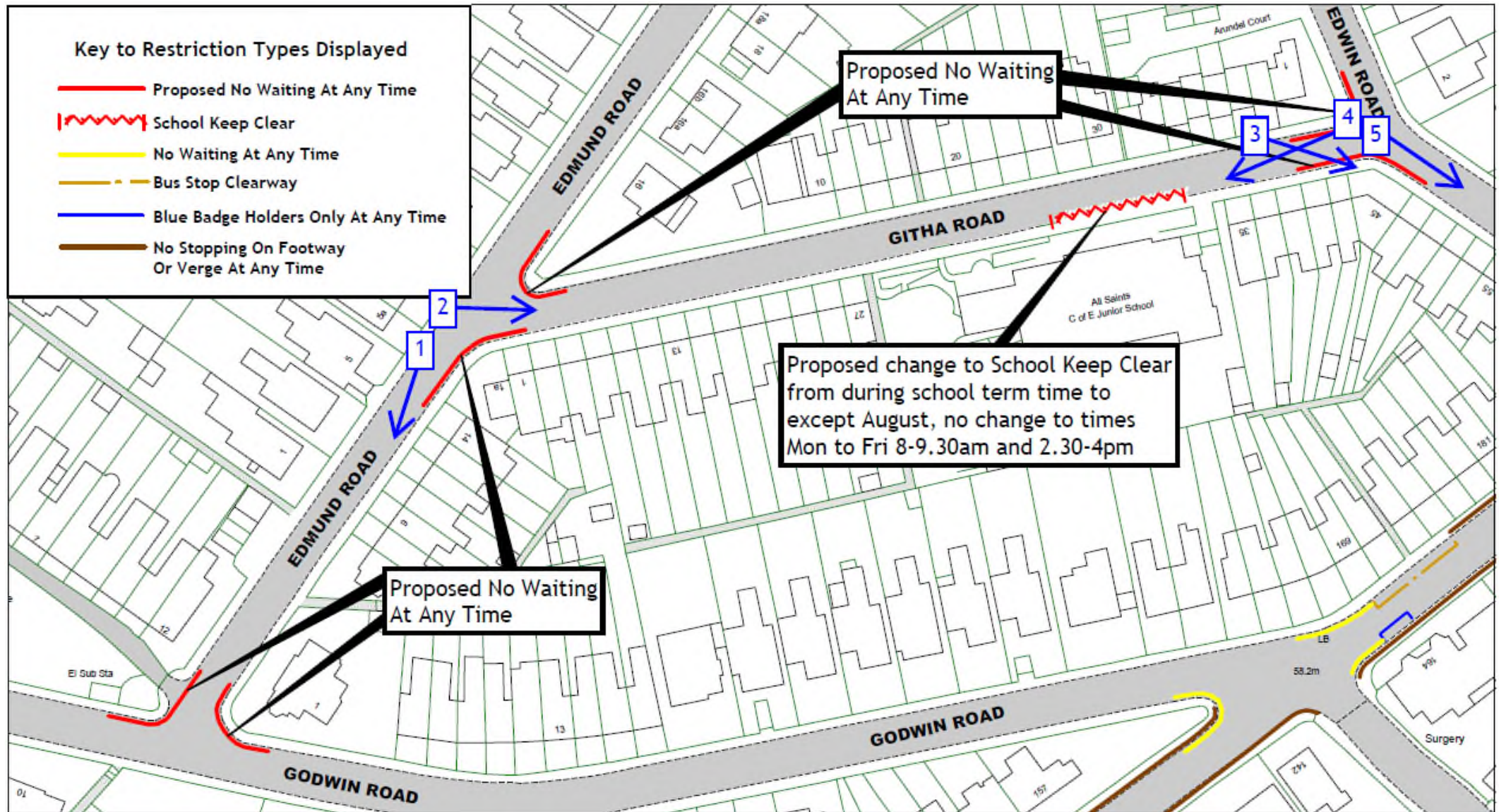












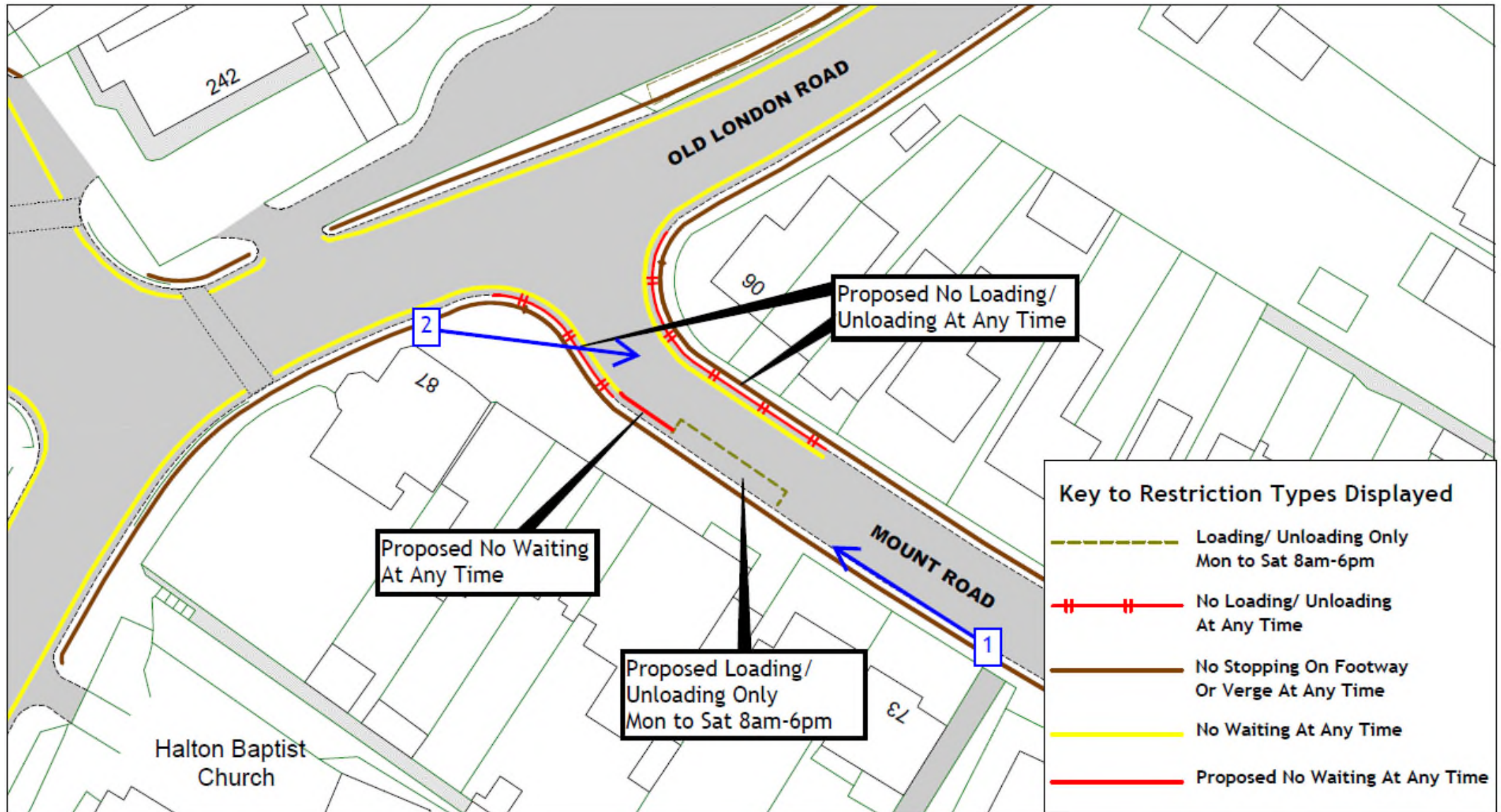






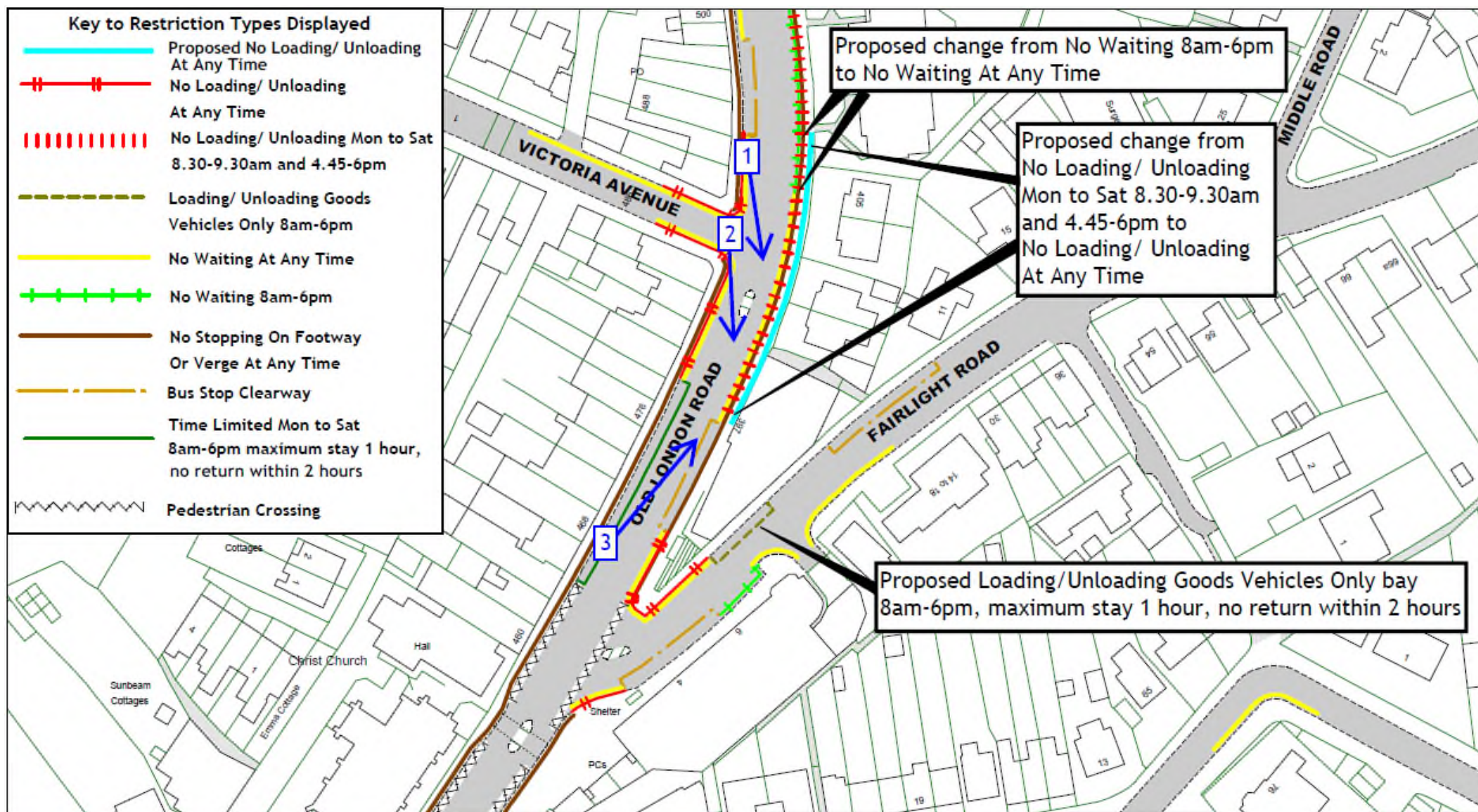








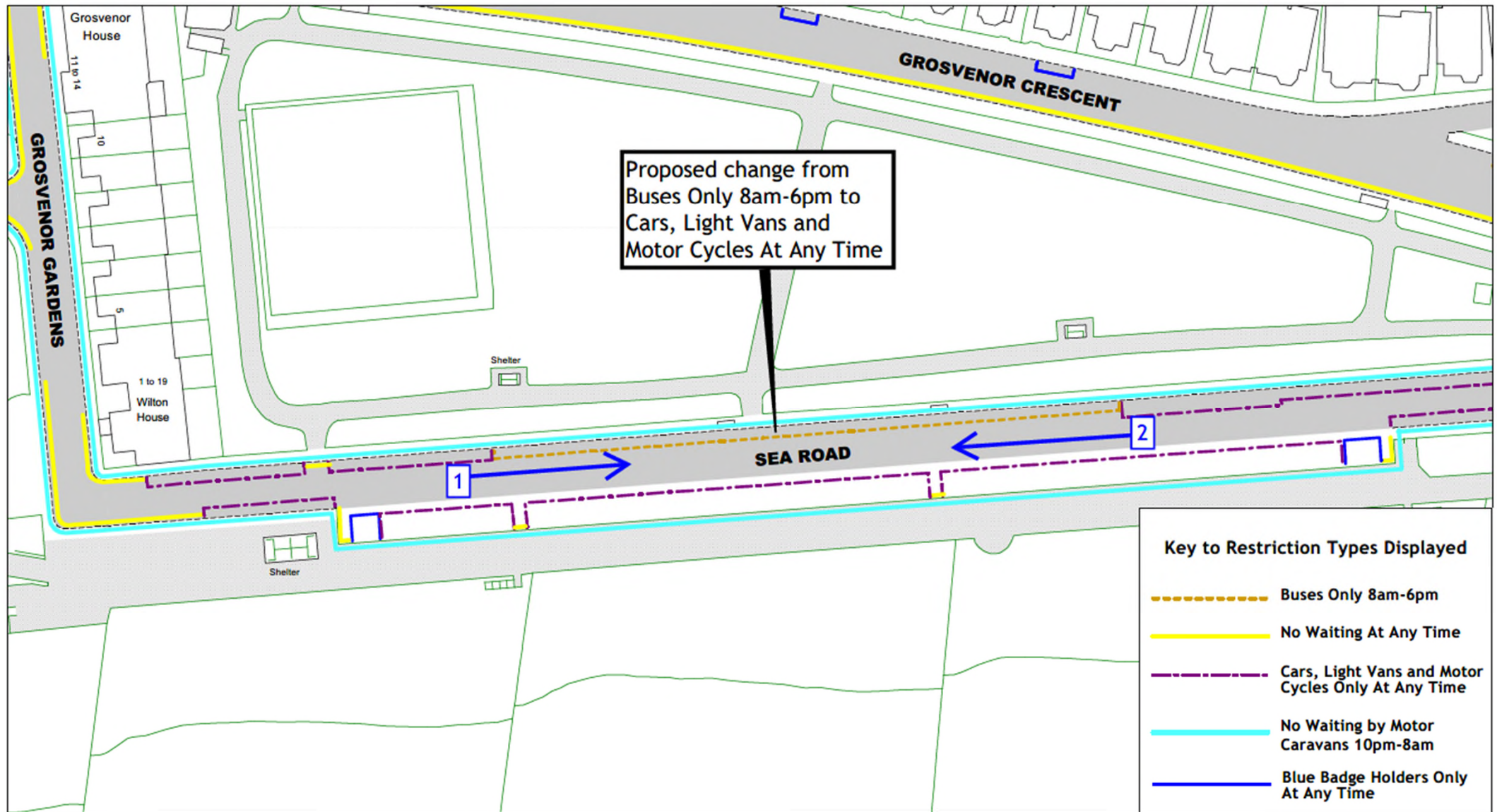


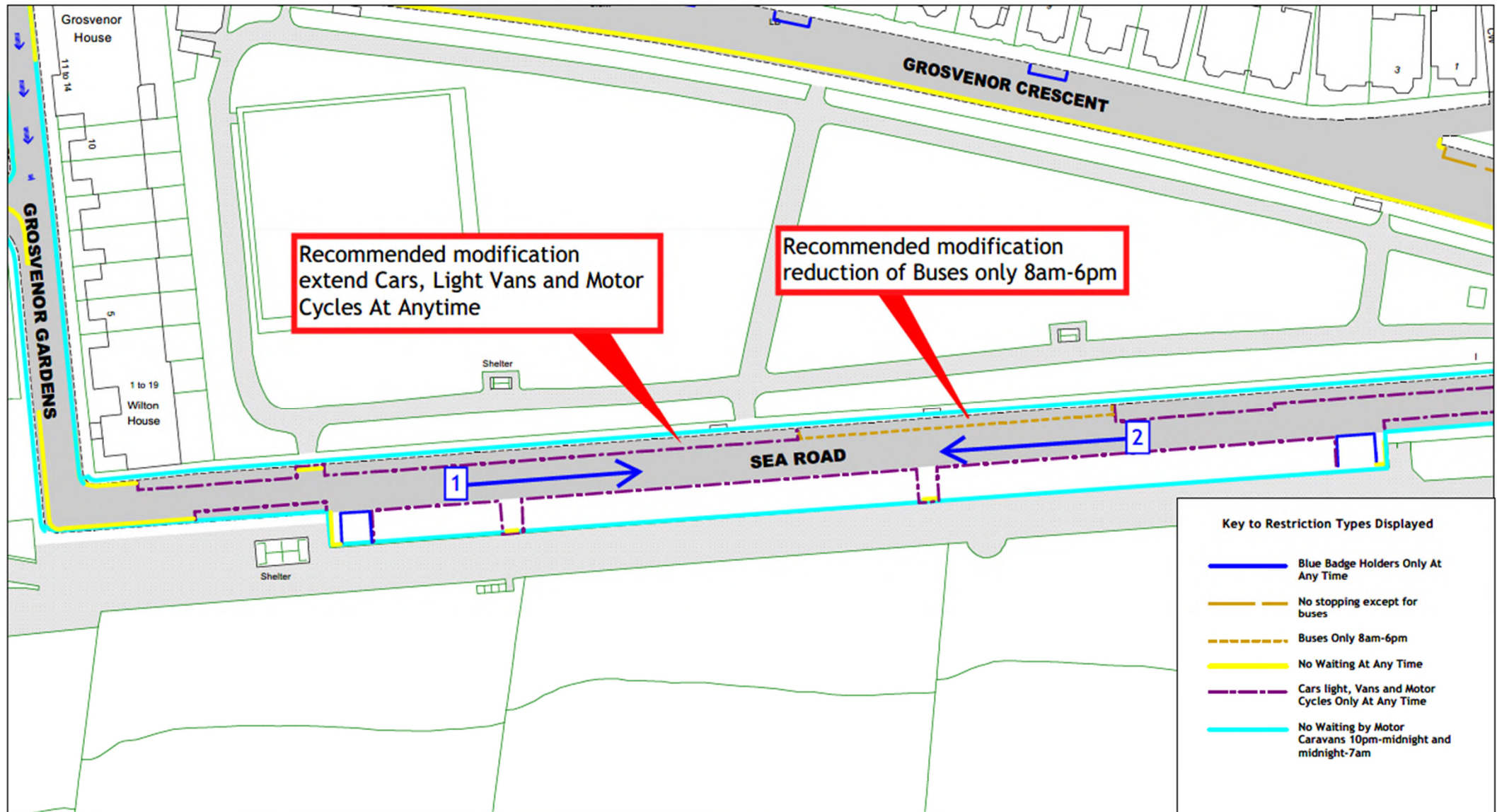






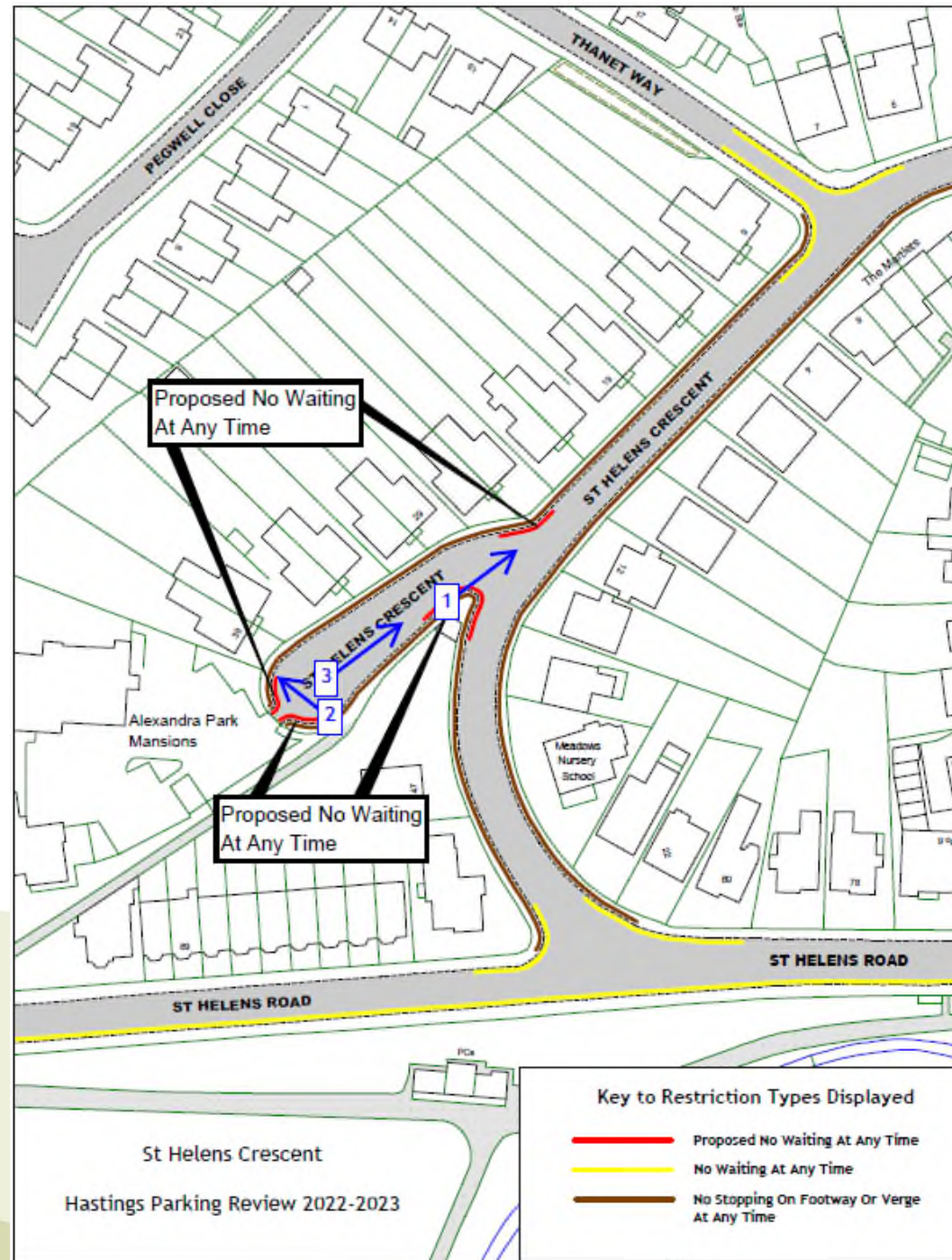












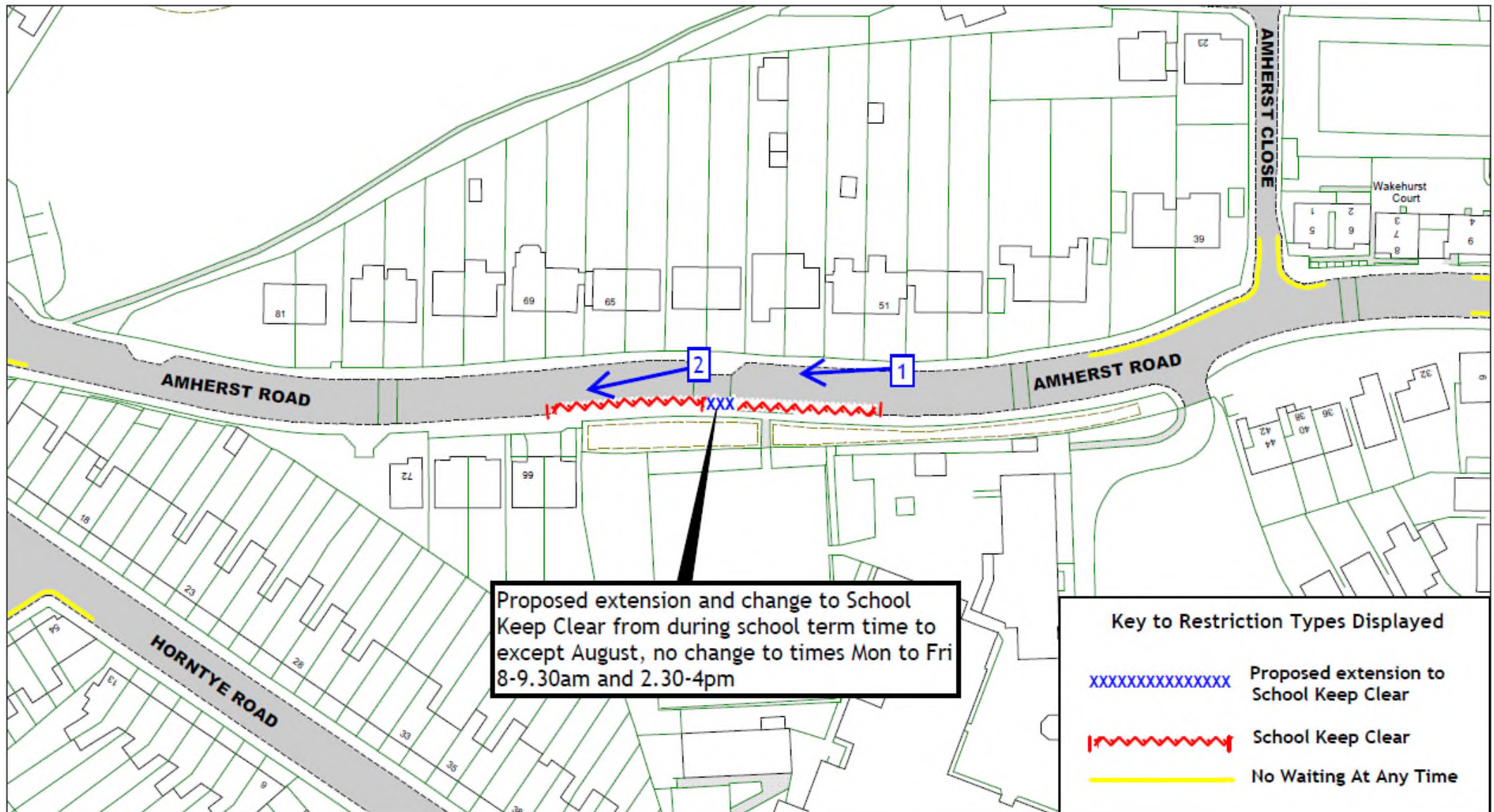


View 2 - Looking northwest across St Helens Crescent at the entrance to Alexandra Park Mansions

59

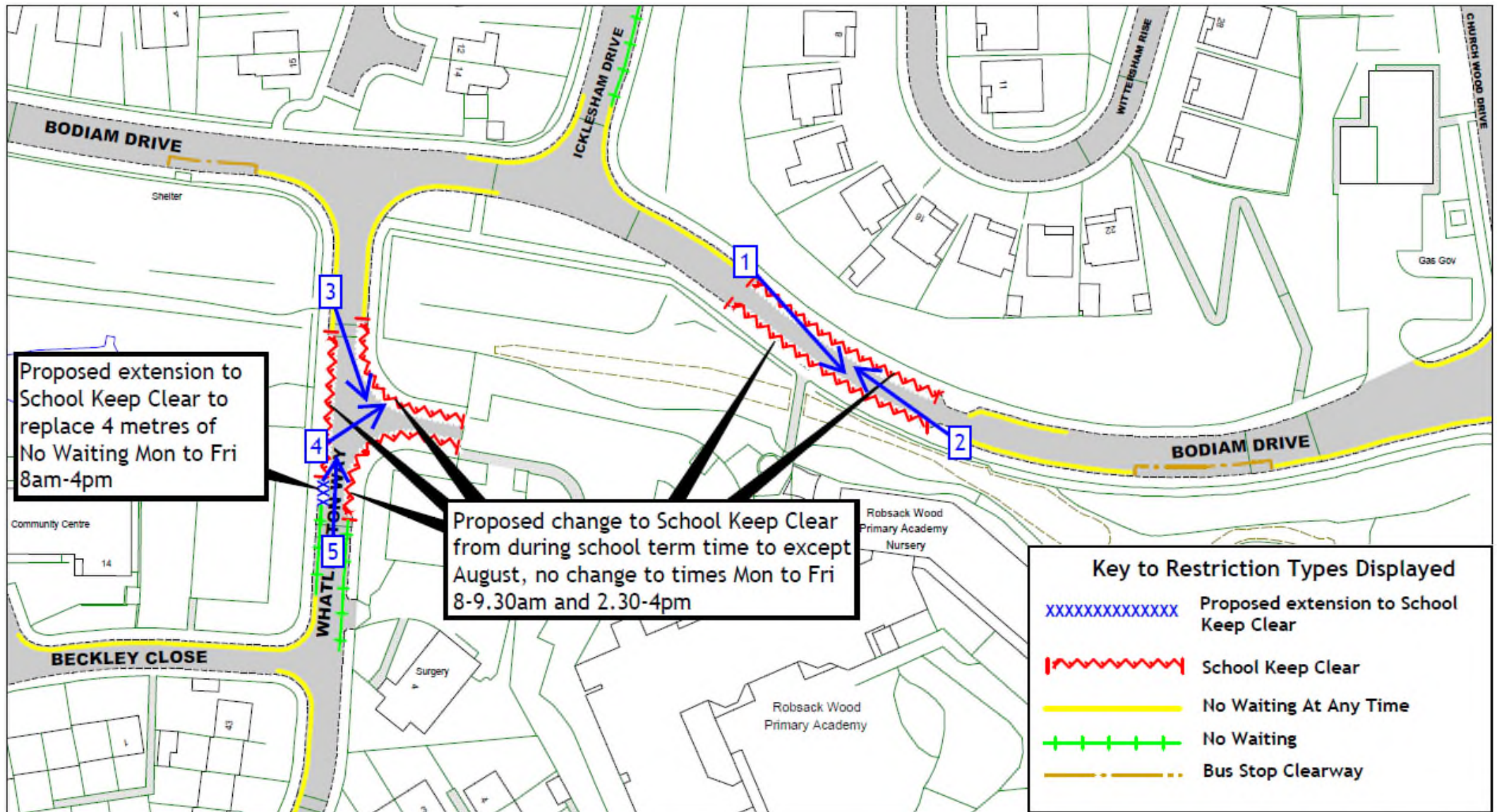












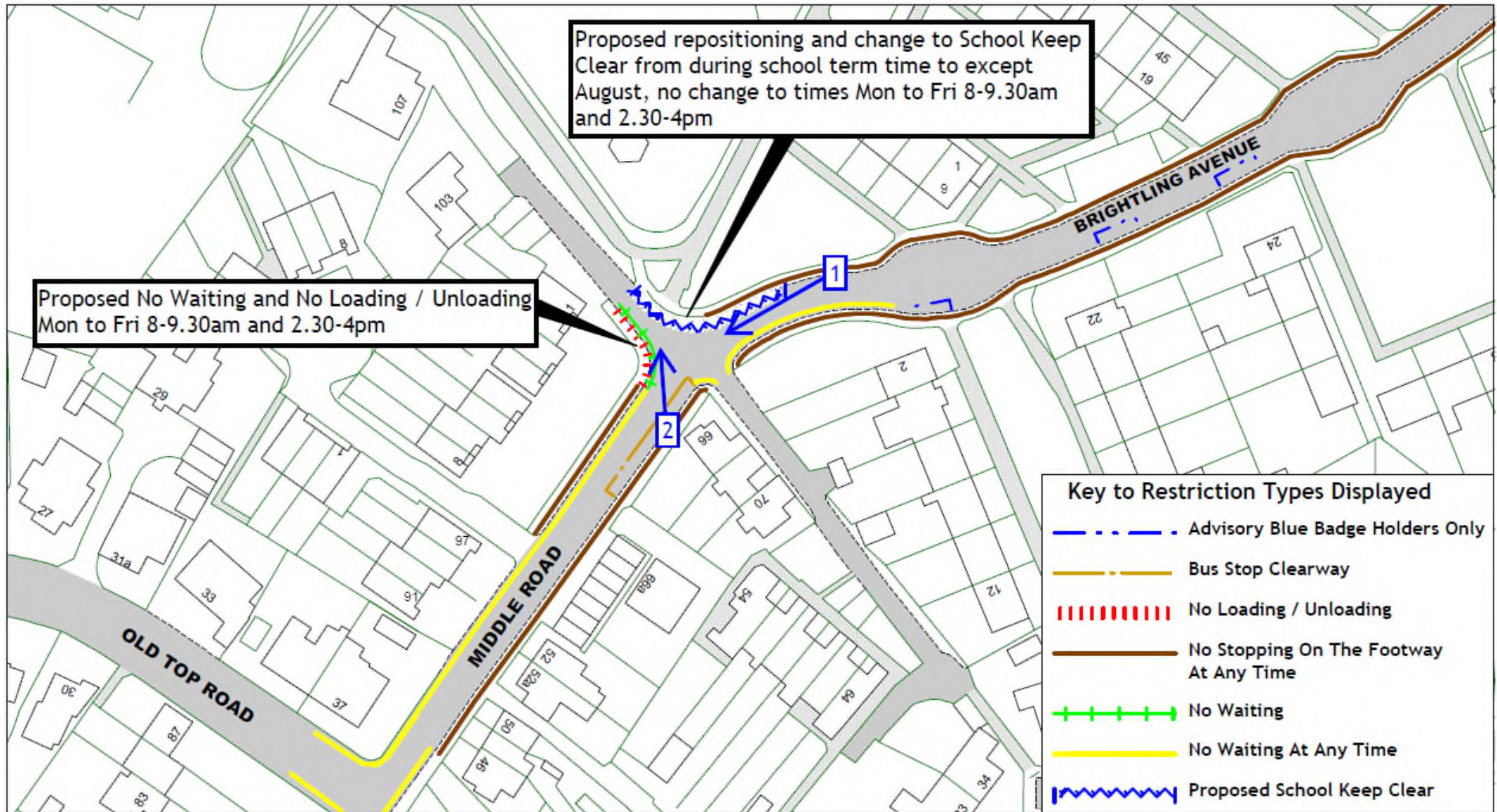






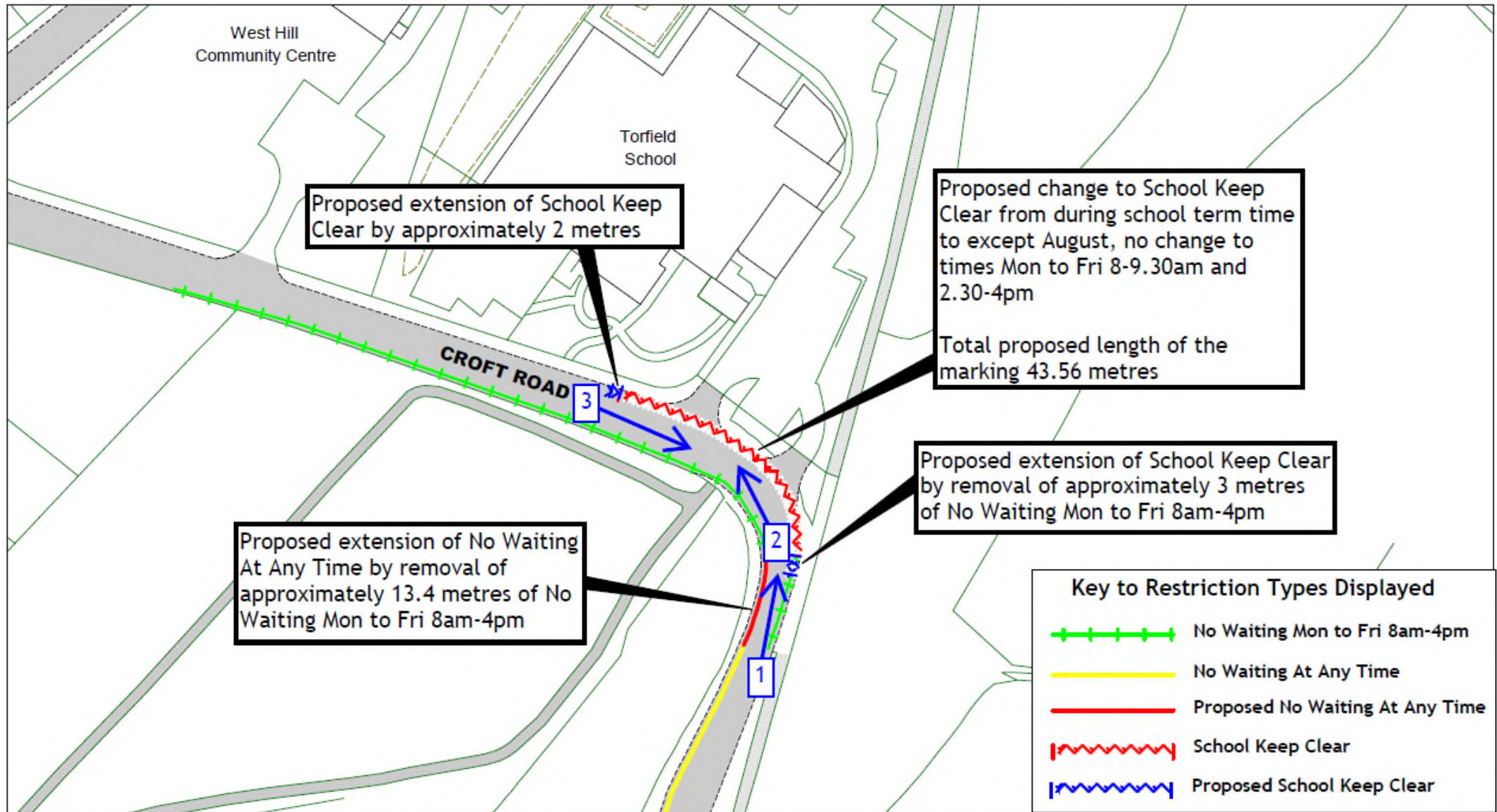












View 1 - Looking north along Croft Road from the end of the double yellow lines

74



View 2 - Looking north along Croft Road from the south end of the current School Keep Clear markings

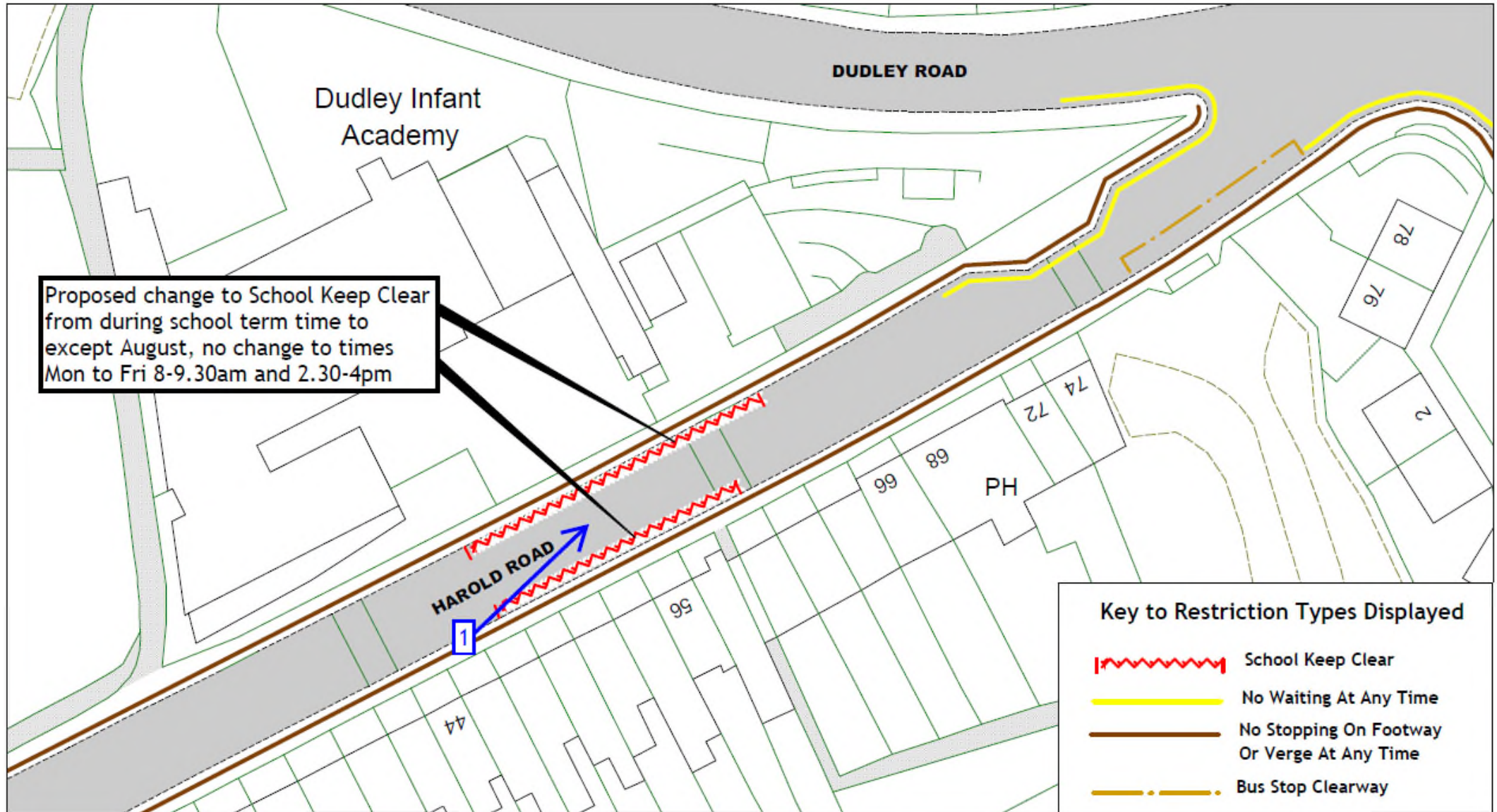
75



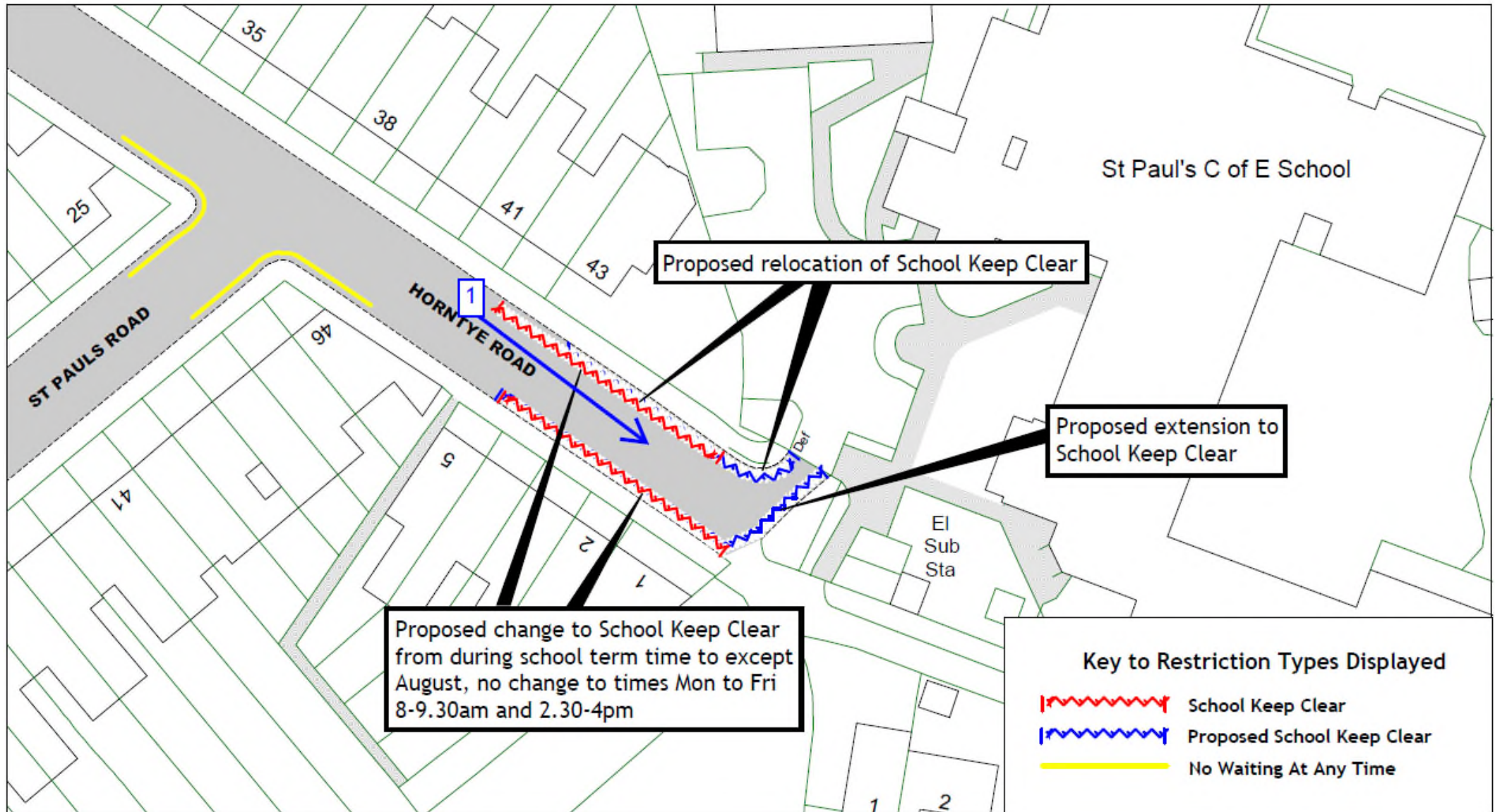
View 3 - Looking southeast along Croft Road from the north end of the current School Keep Clear markings

76

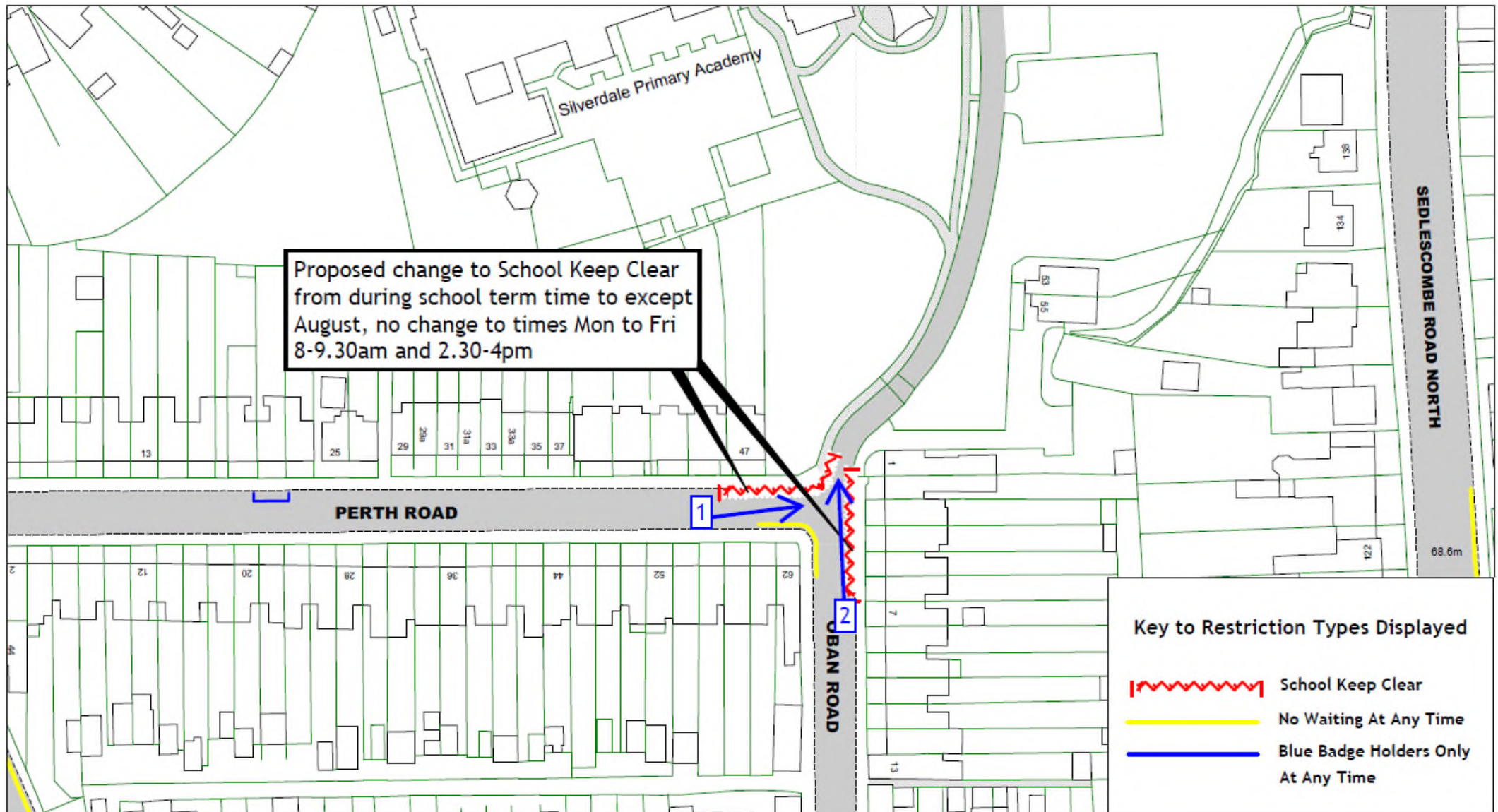






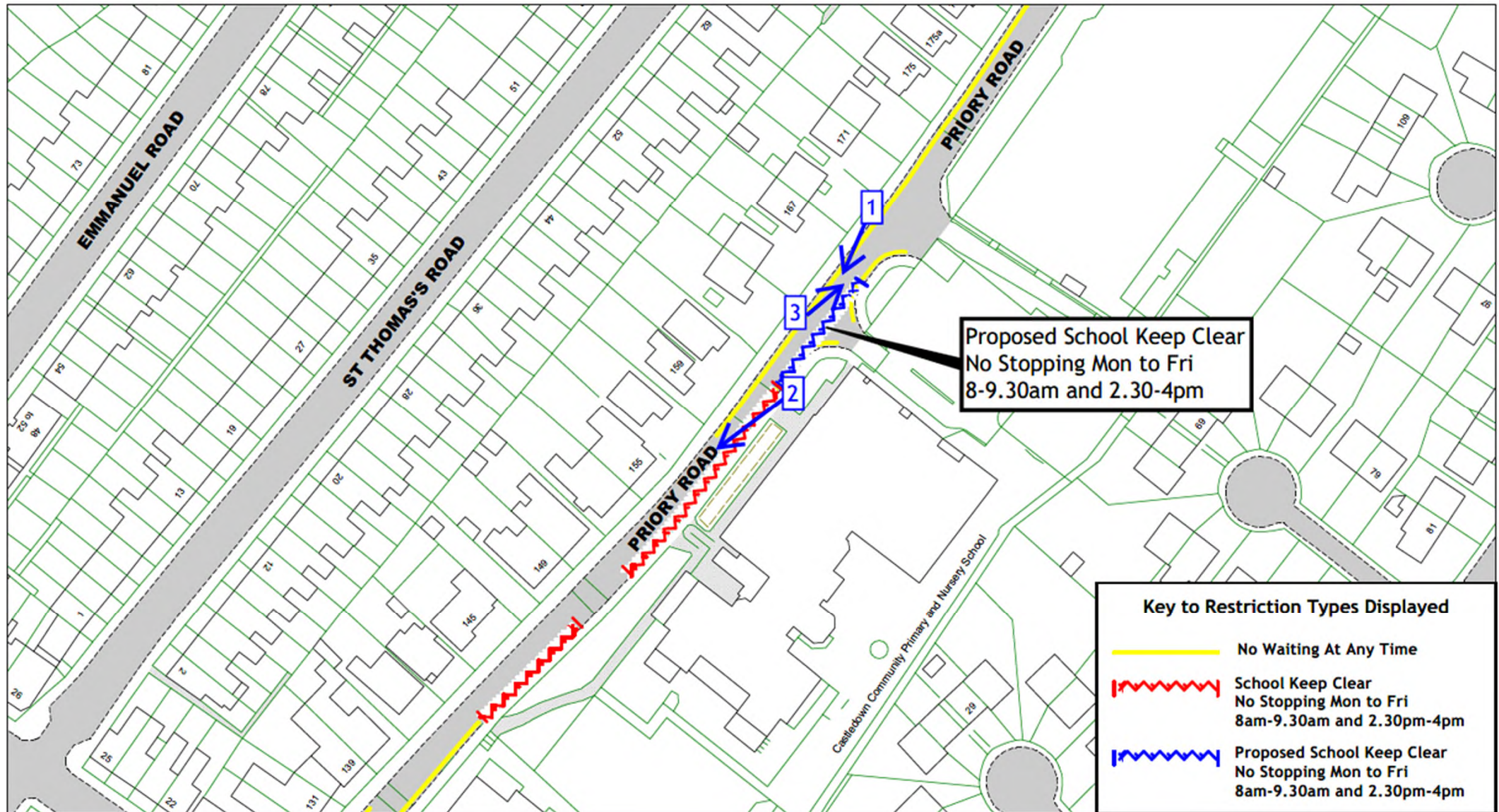








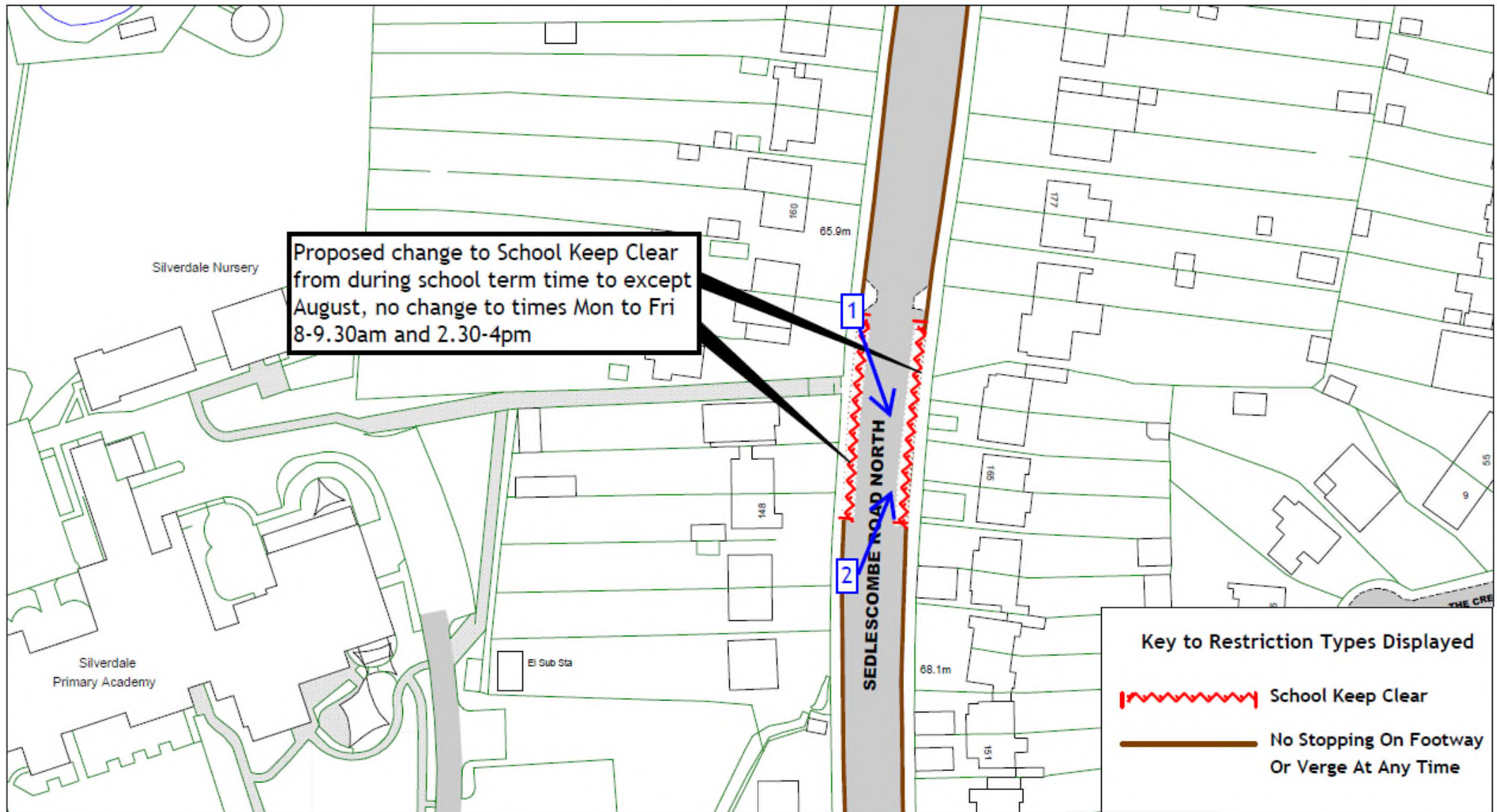










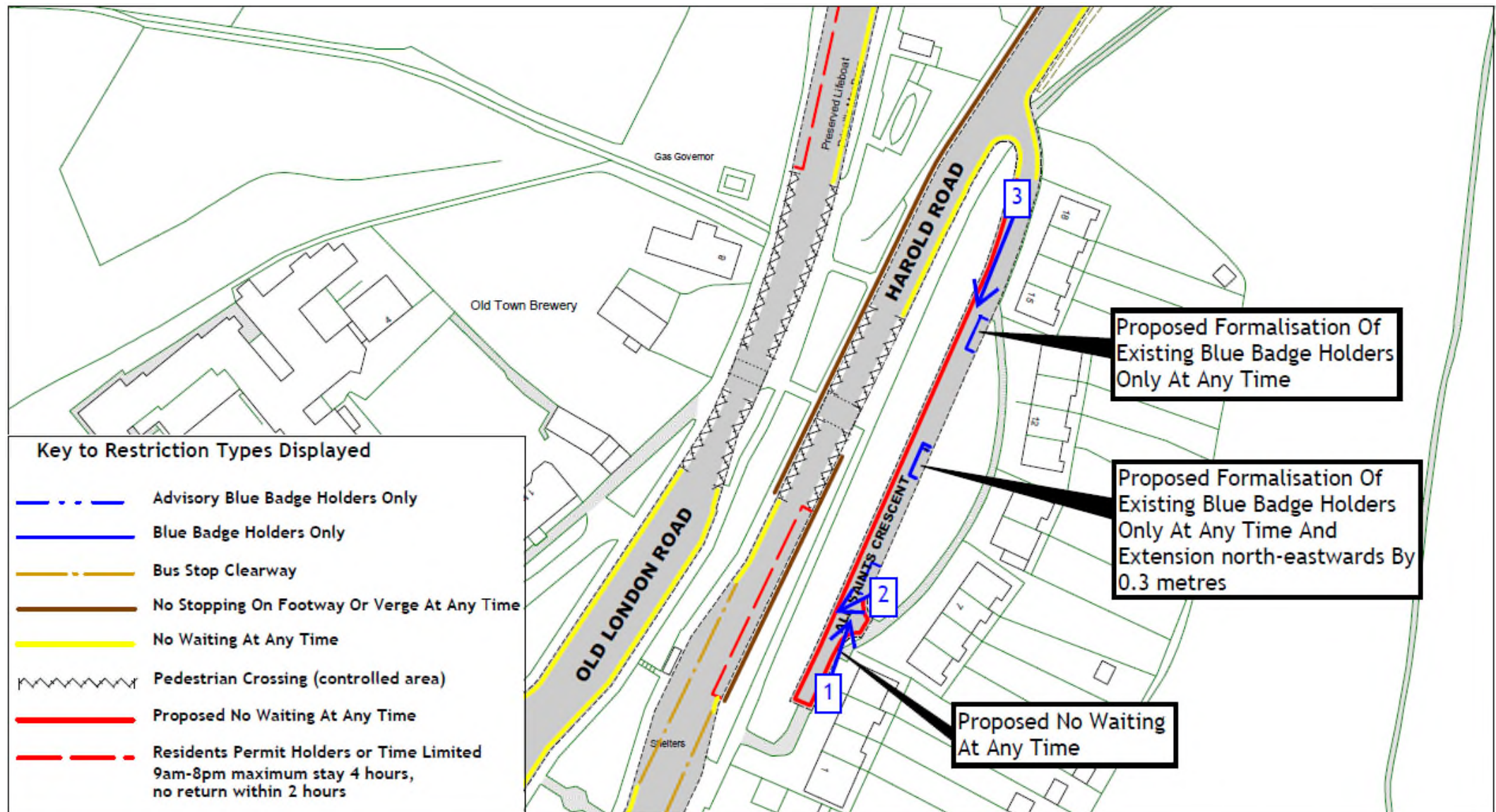


View 1 - Looking south along Sedlescombe Road North from 156 Sedlescombe Road North

89



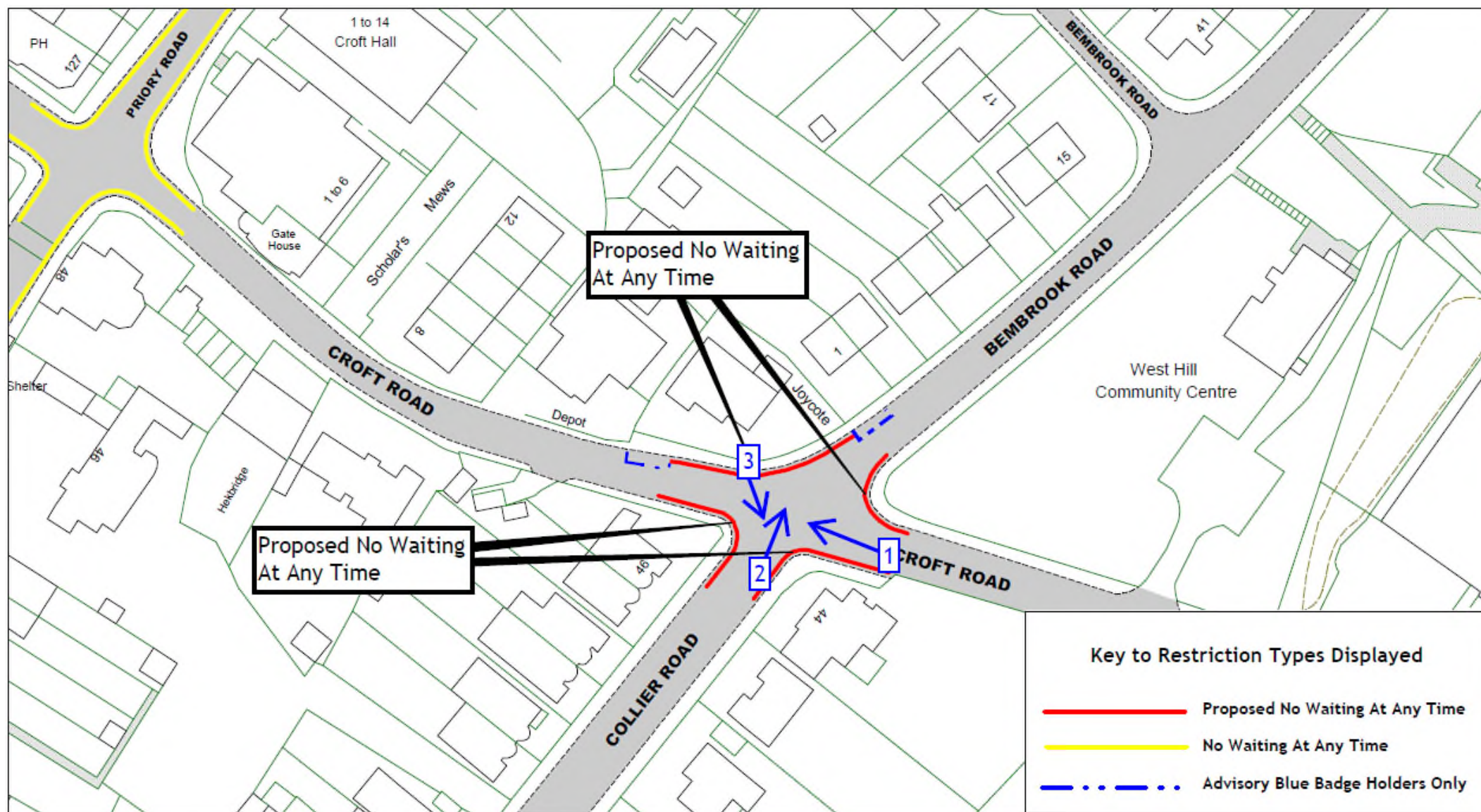








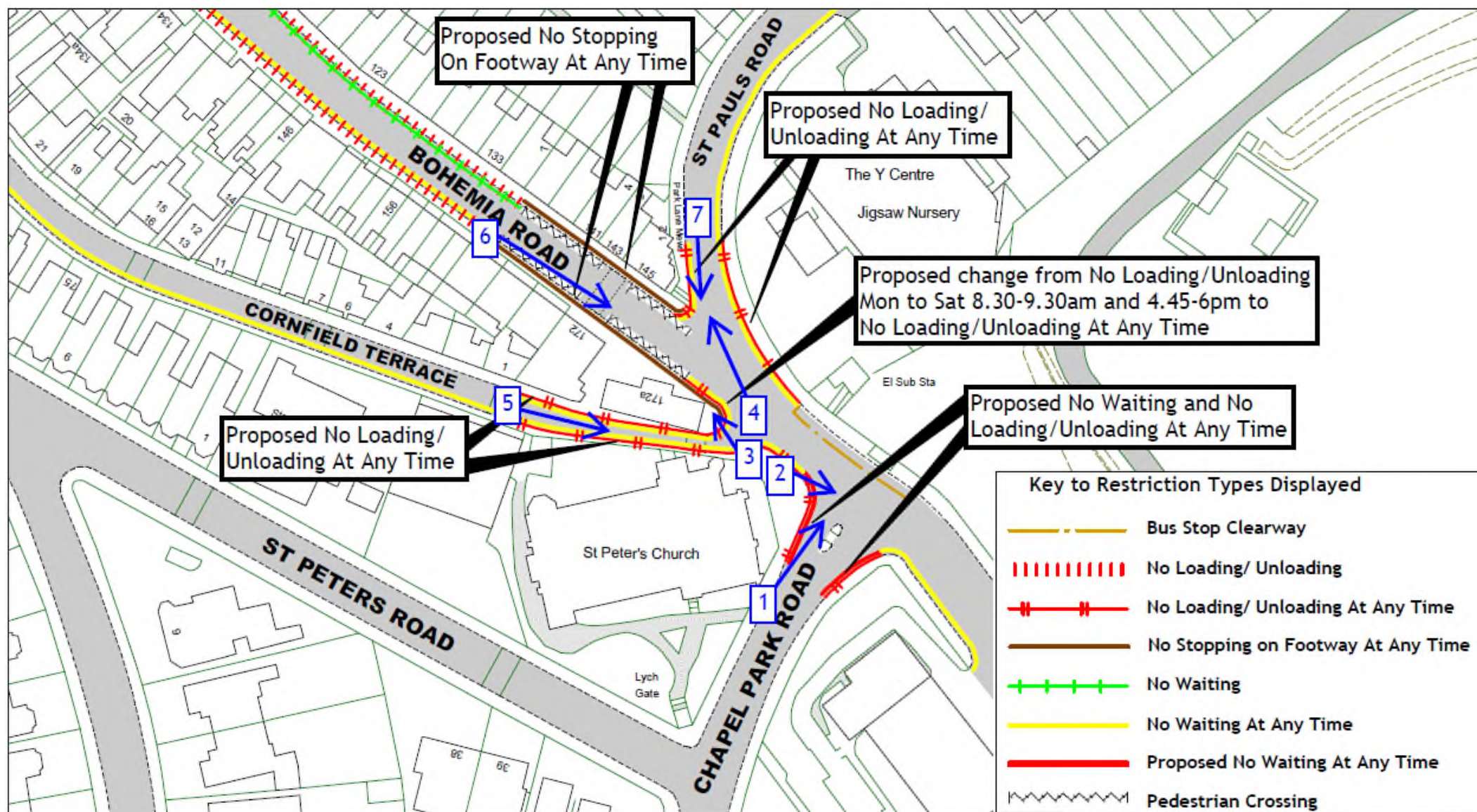
















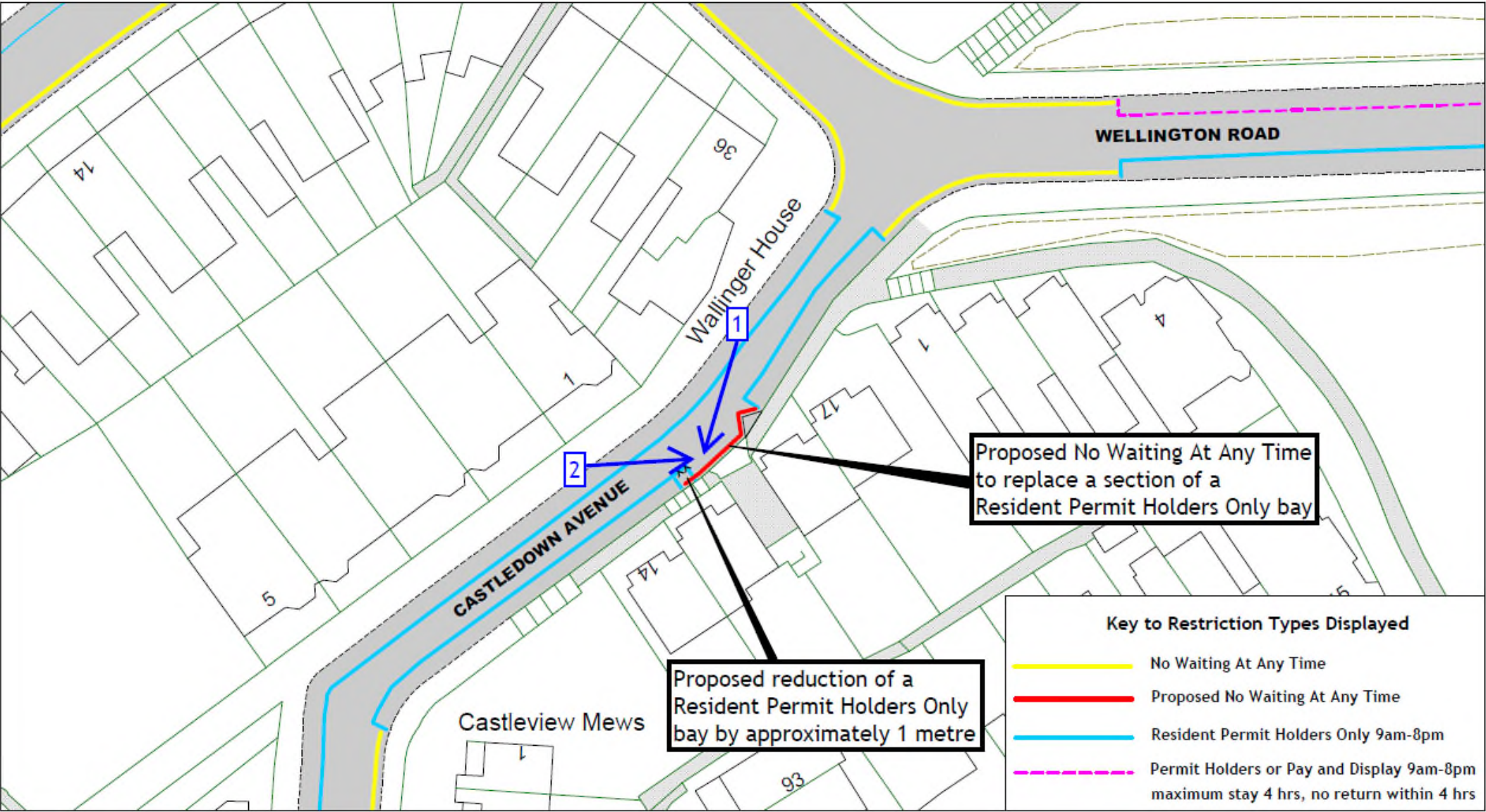






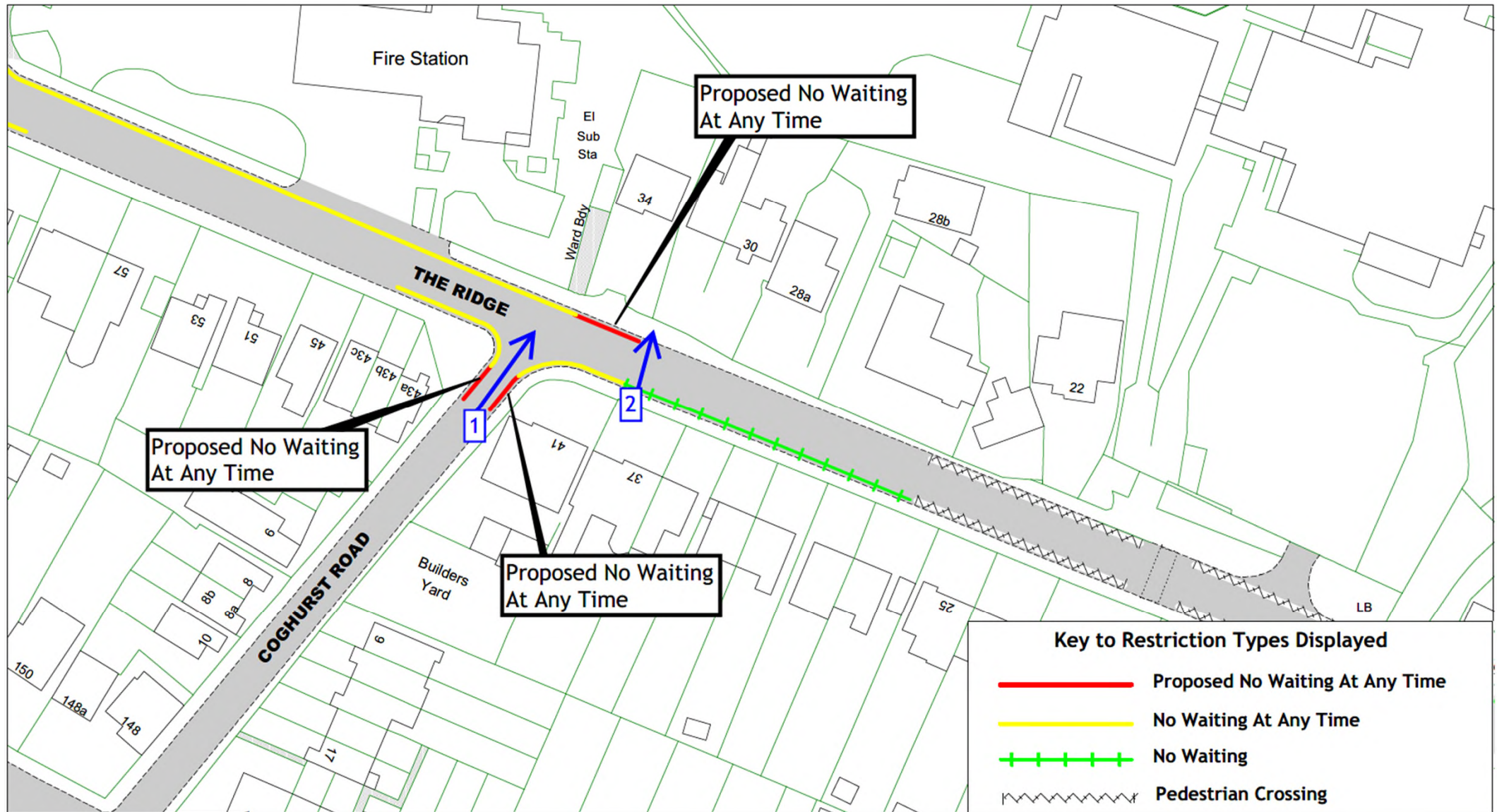










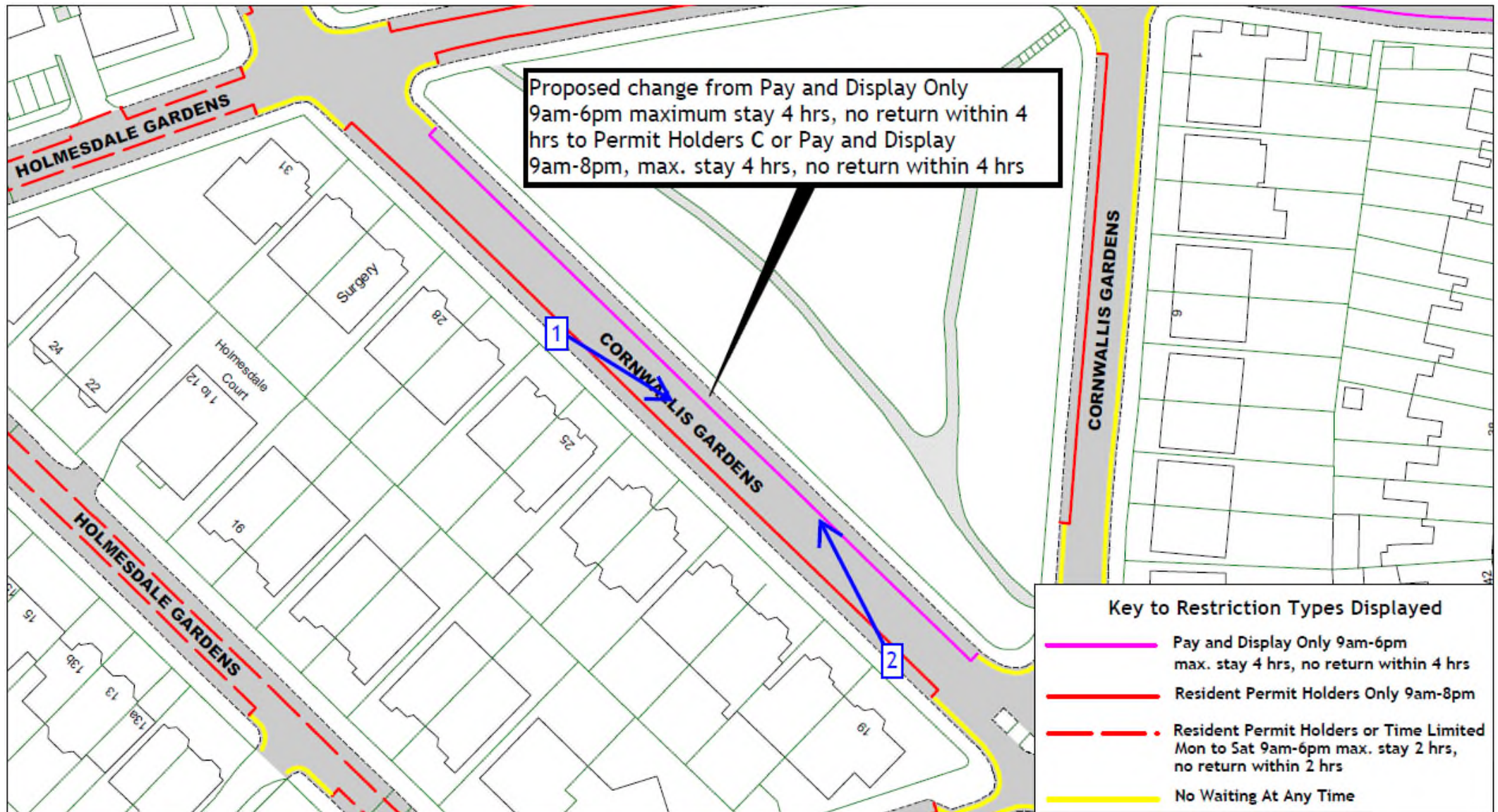


View 1 - Looking north along Coghurst Road and its junction with The Ridge from 41 The Ridge

111

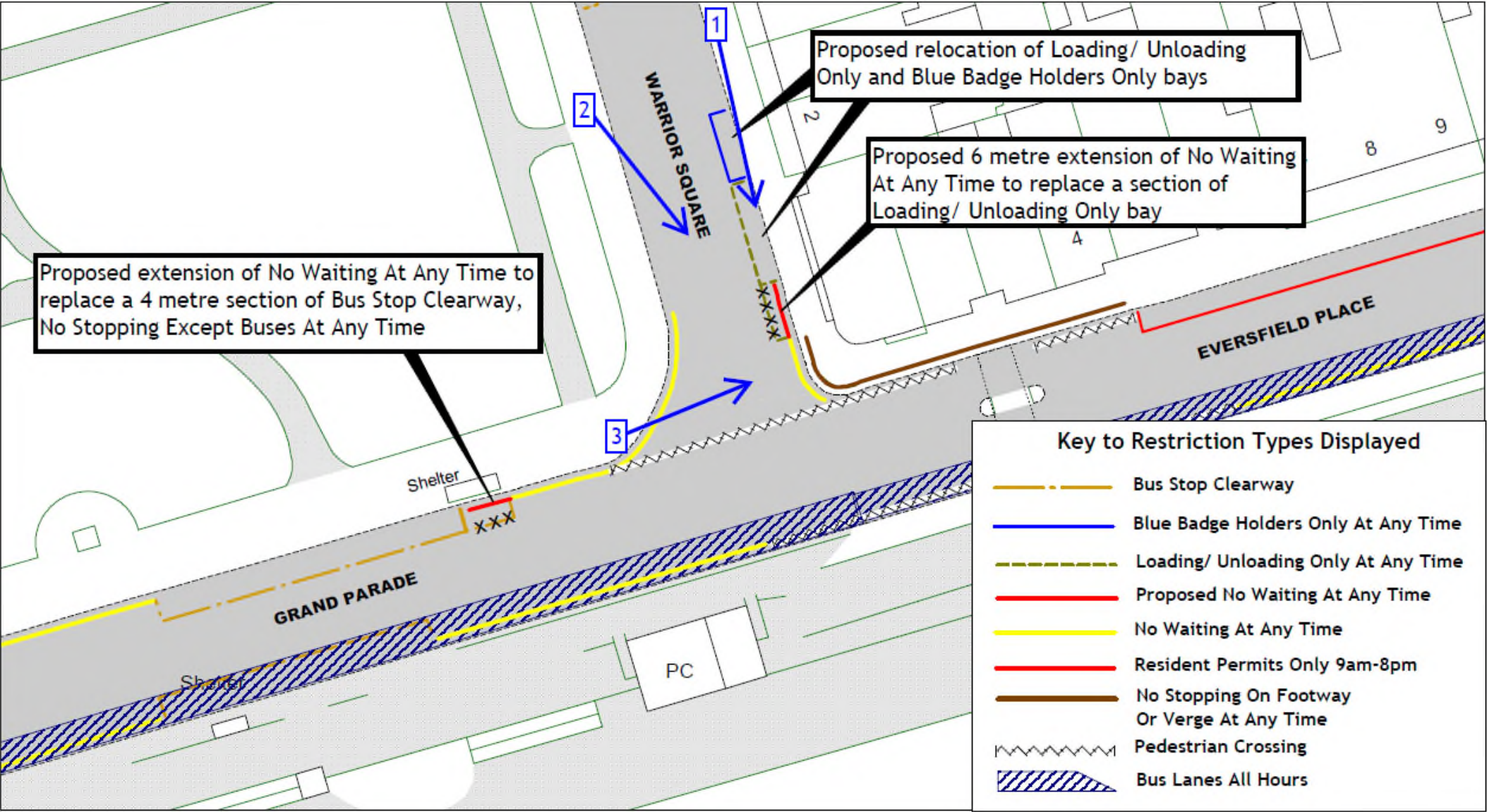














View 2 - Looking southeast across Warrior Square from opposite 4 Warrior Square

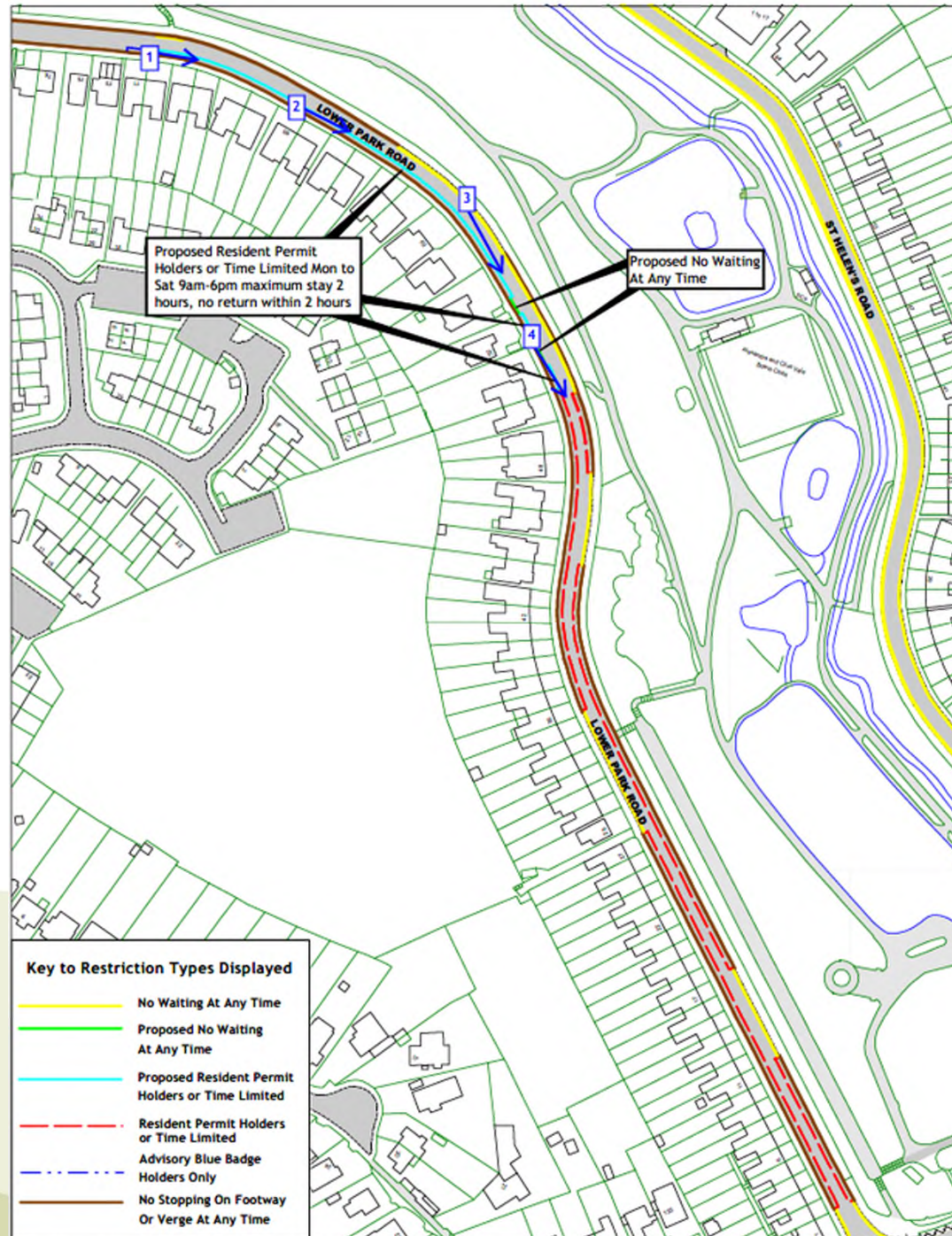
118



View 3 - Looking east across Warrior Square at its junction with Grand Parade

119







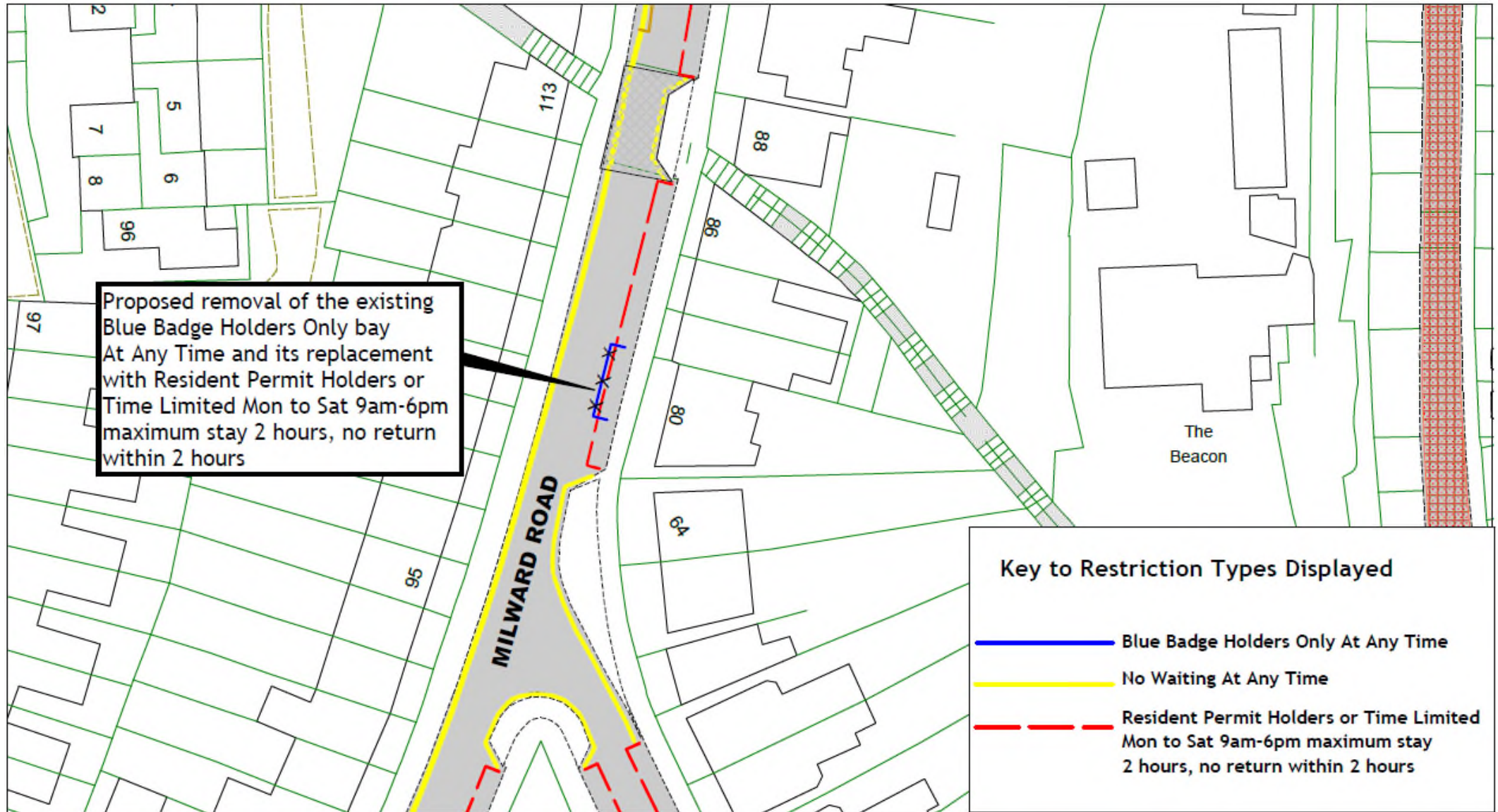


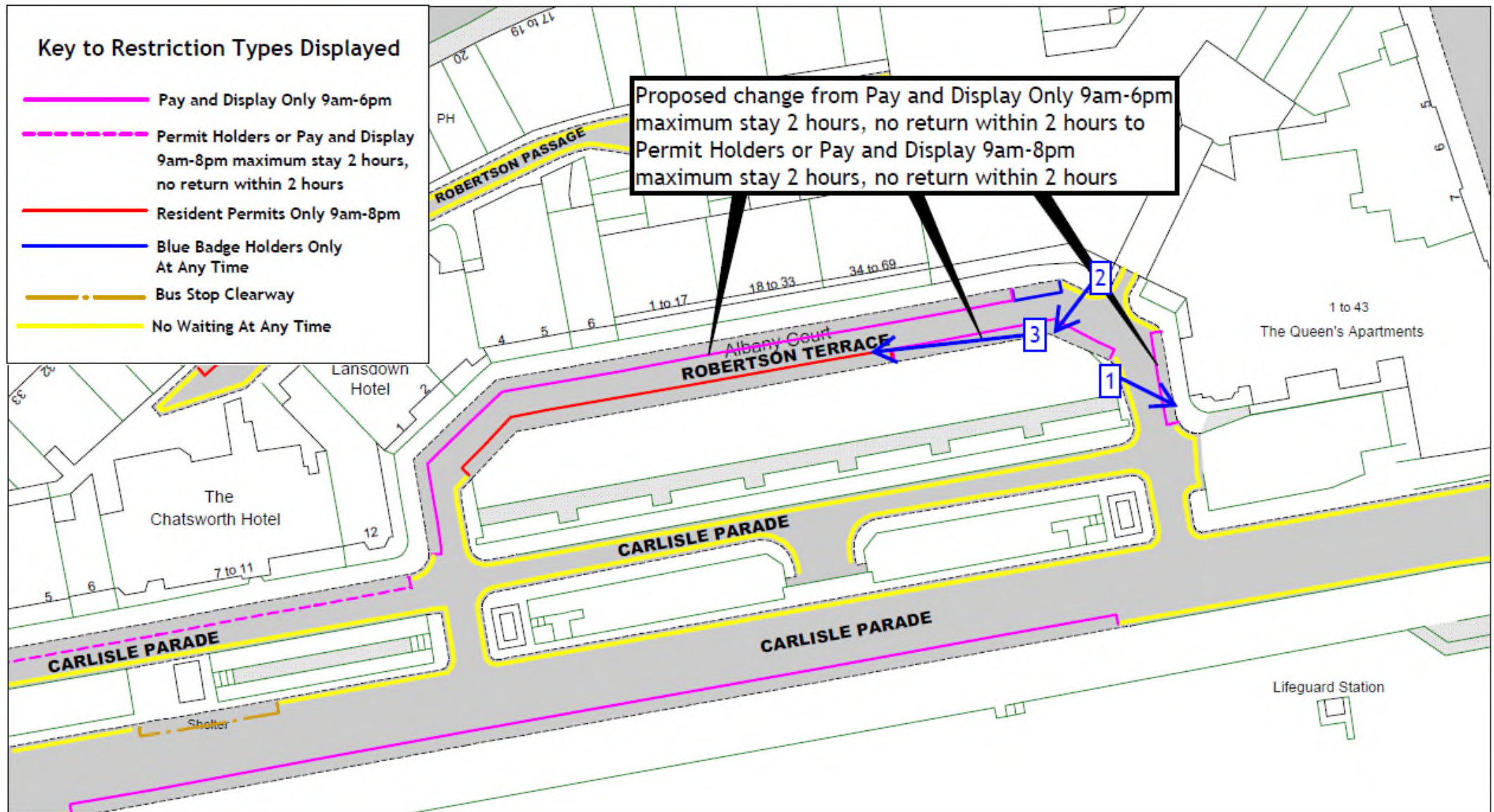
View 3 - Looking southeast across Lower Park Road from opposite 59 Lower Park Road

123





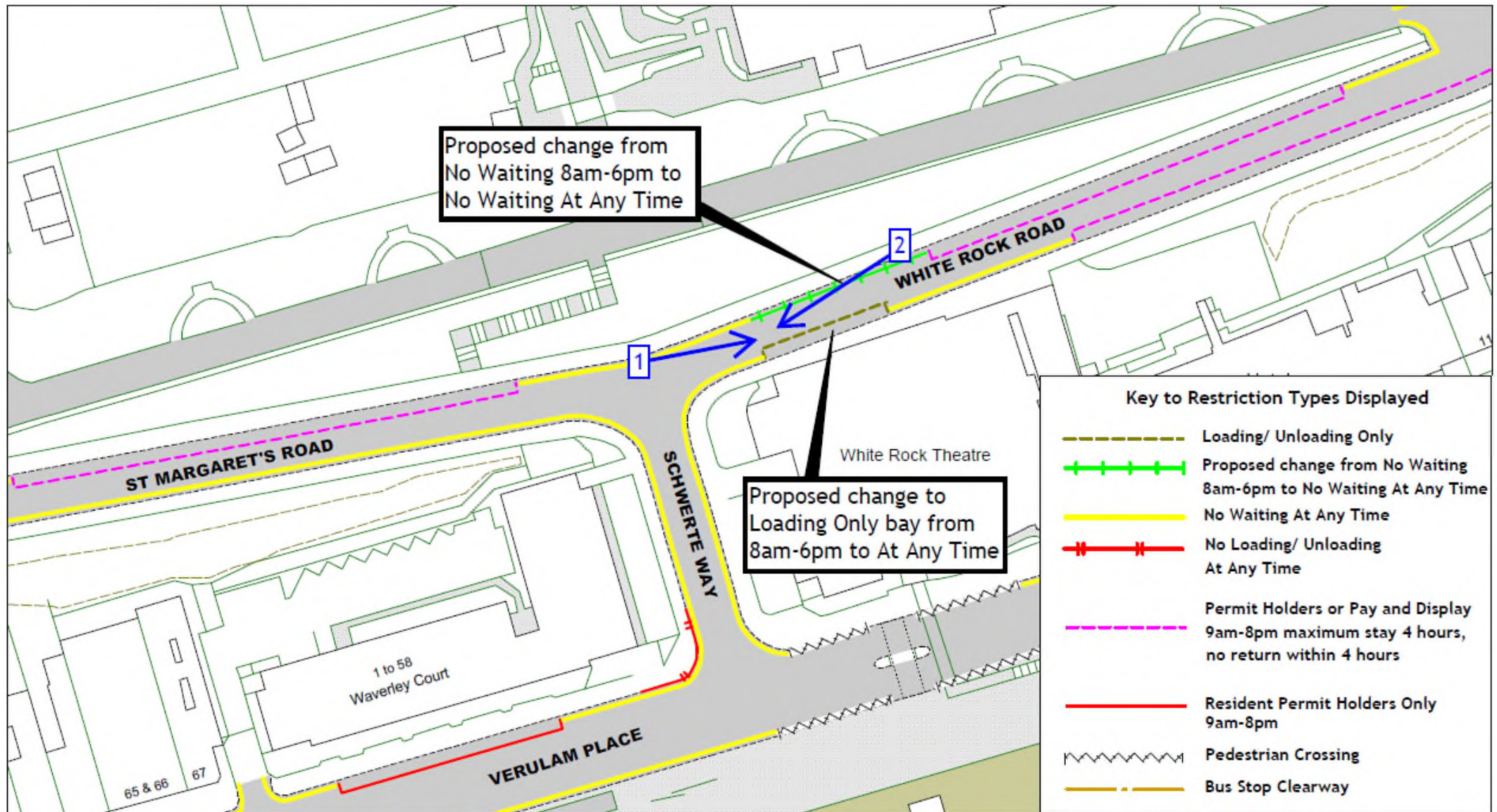
















Traffic Regulation Order: Hastings Parking Review 2022-2023

Objections received to changes to parking and waiting restrictions proposed during the latest parking review in Hastings District