

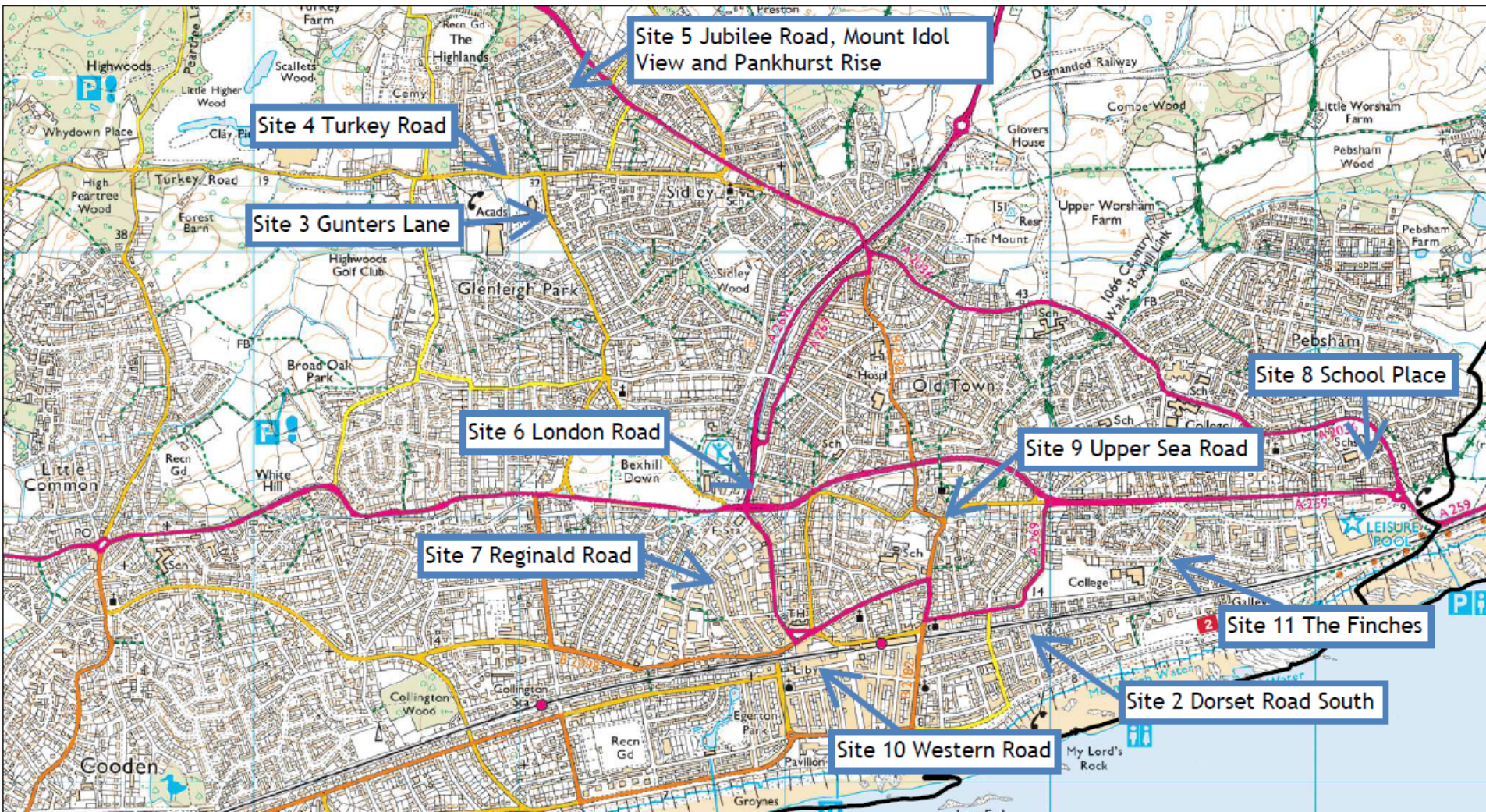
East Sussex County Council Planning Committee 10 July 2024

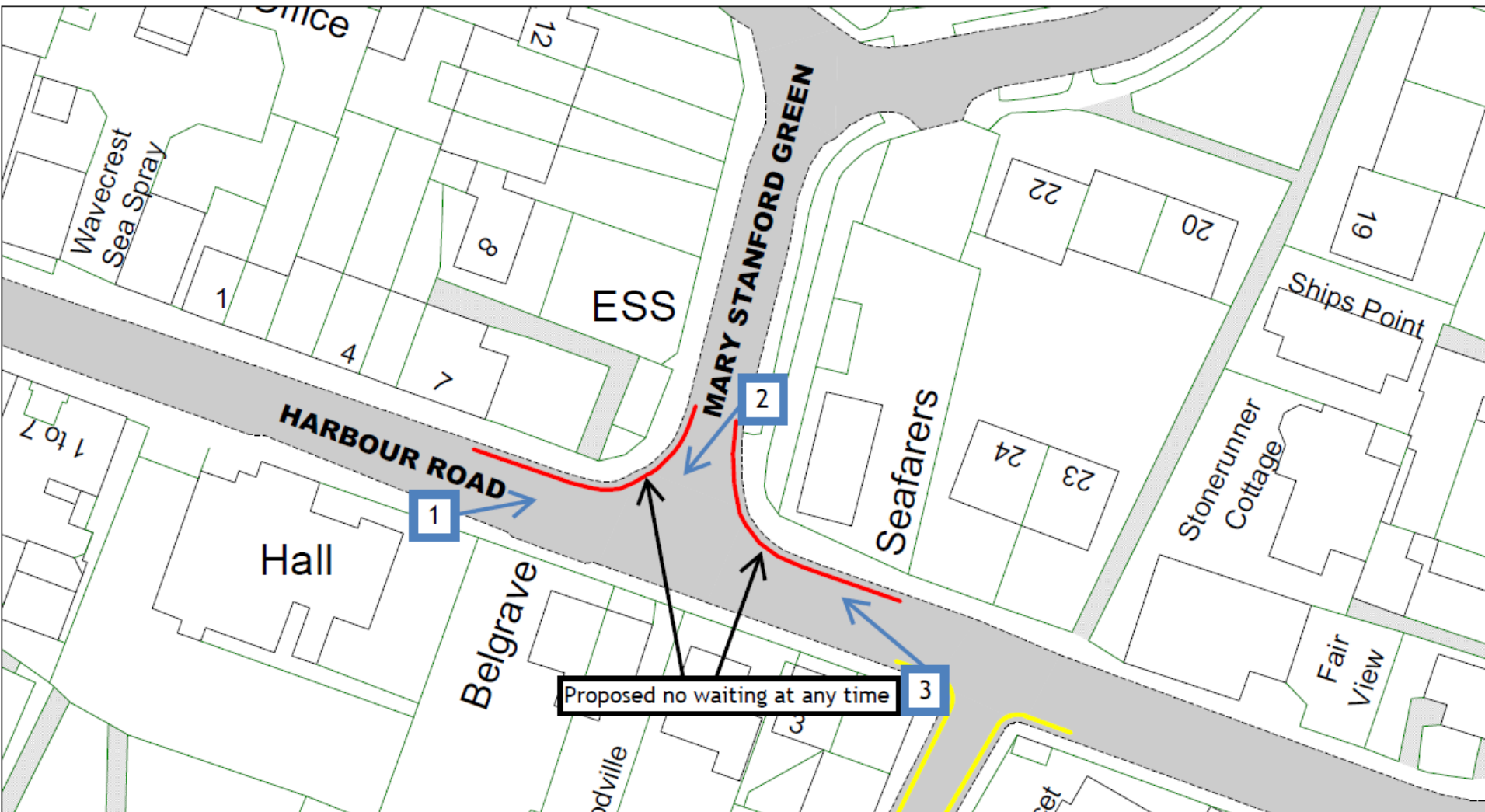
Traffic Regulation Order: Rother Parking Review 2

Objections received to changes to parking and waiting restrictions proposed during the latest parking review in Rother District



Rother Parking Review 2 sites attracting objections





View 1 – Looking east along Harbour Road opposite 7 Paines Cottages

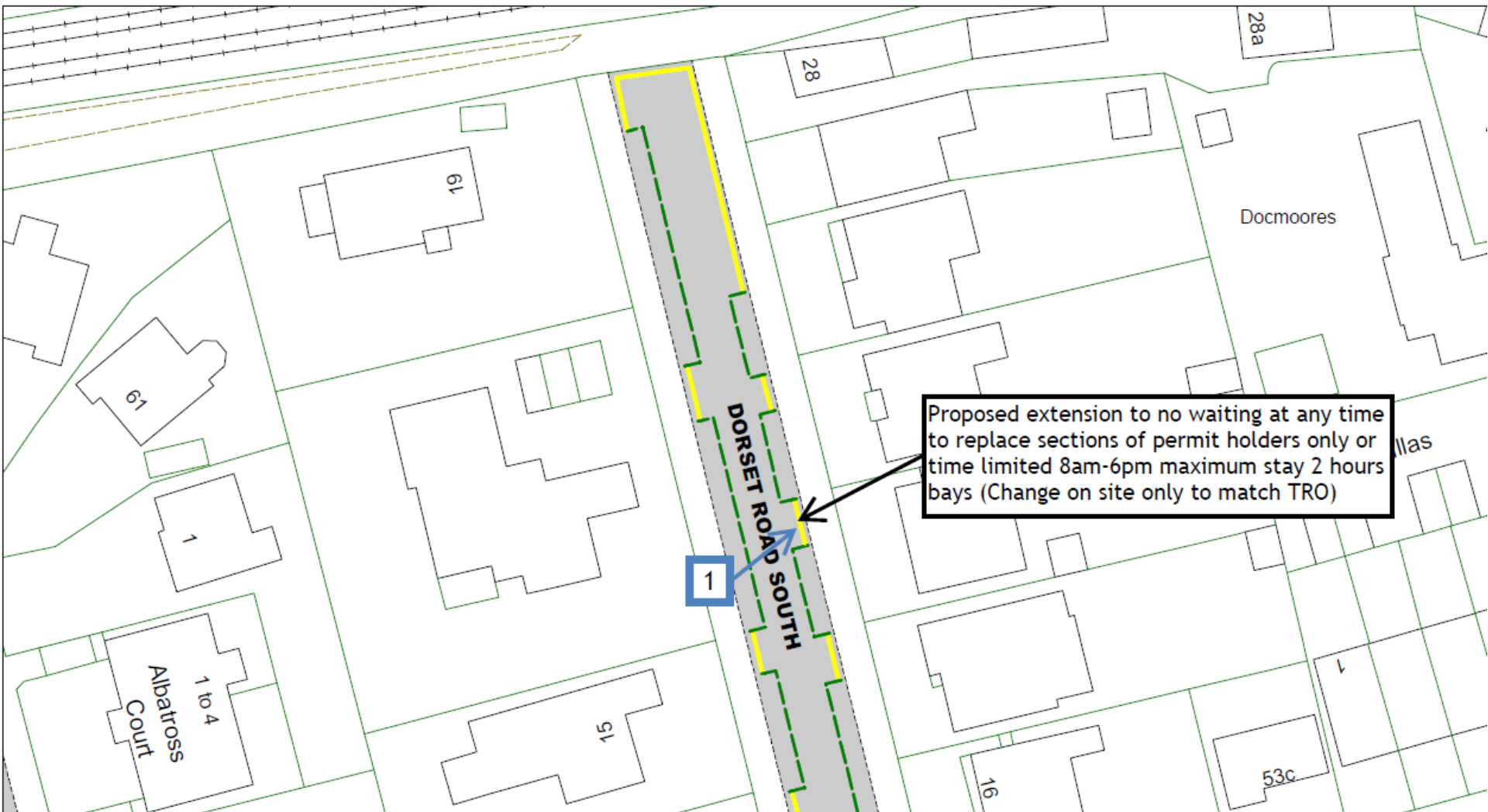


View 2 – Looking south west at the junction of Mary Stanford Green



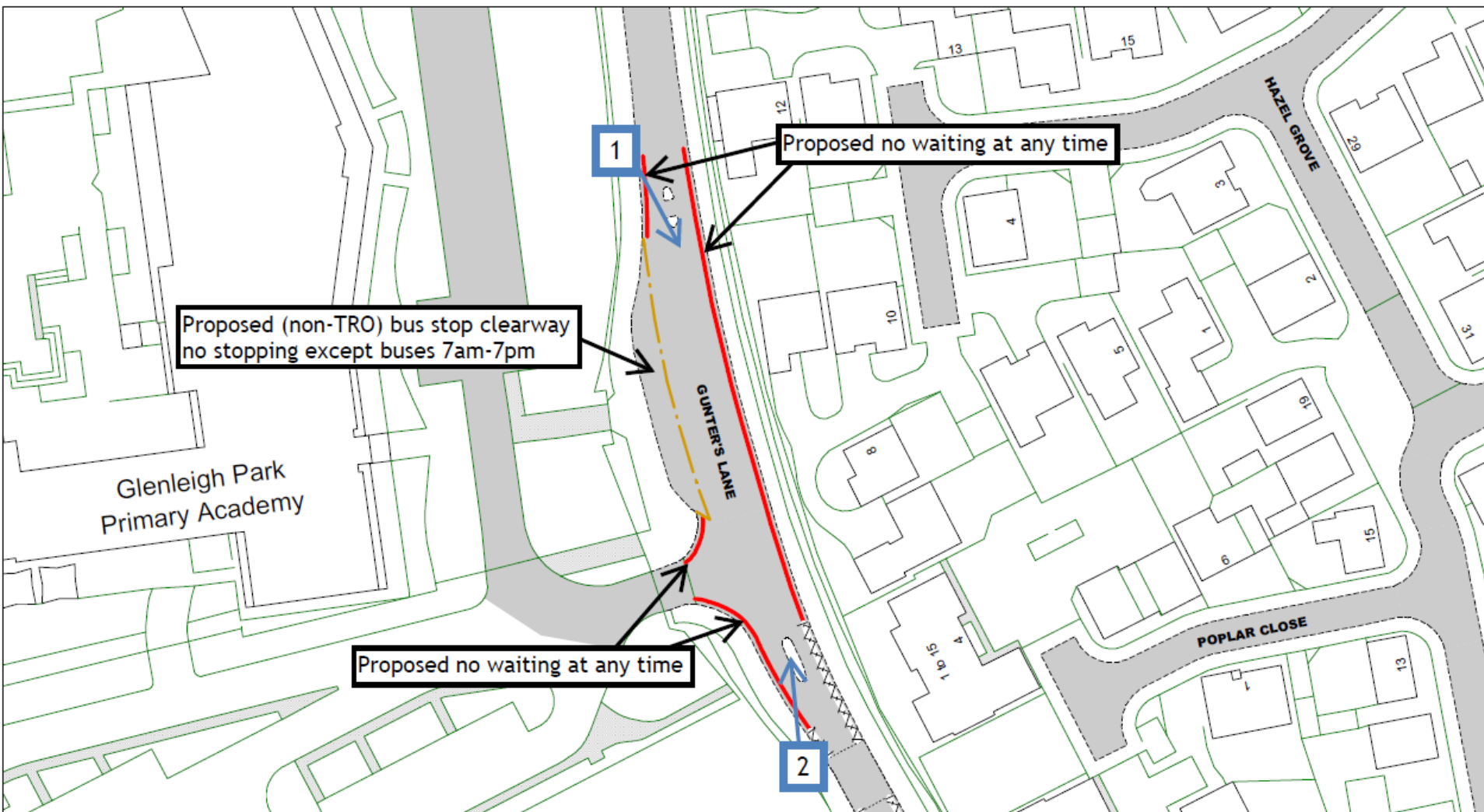


Site 2 - Dorset Road South, Bexhill





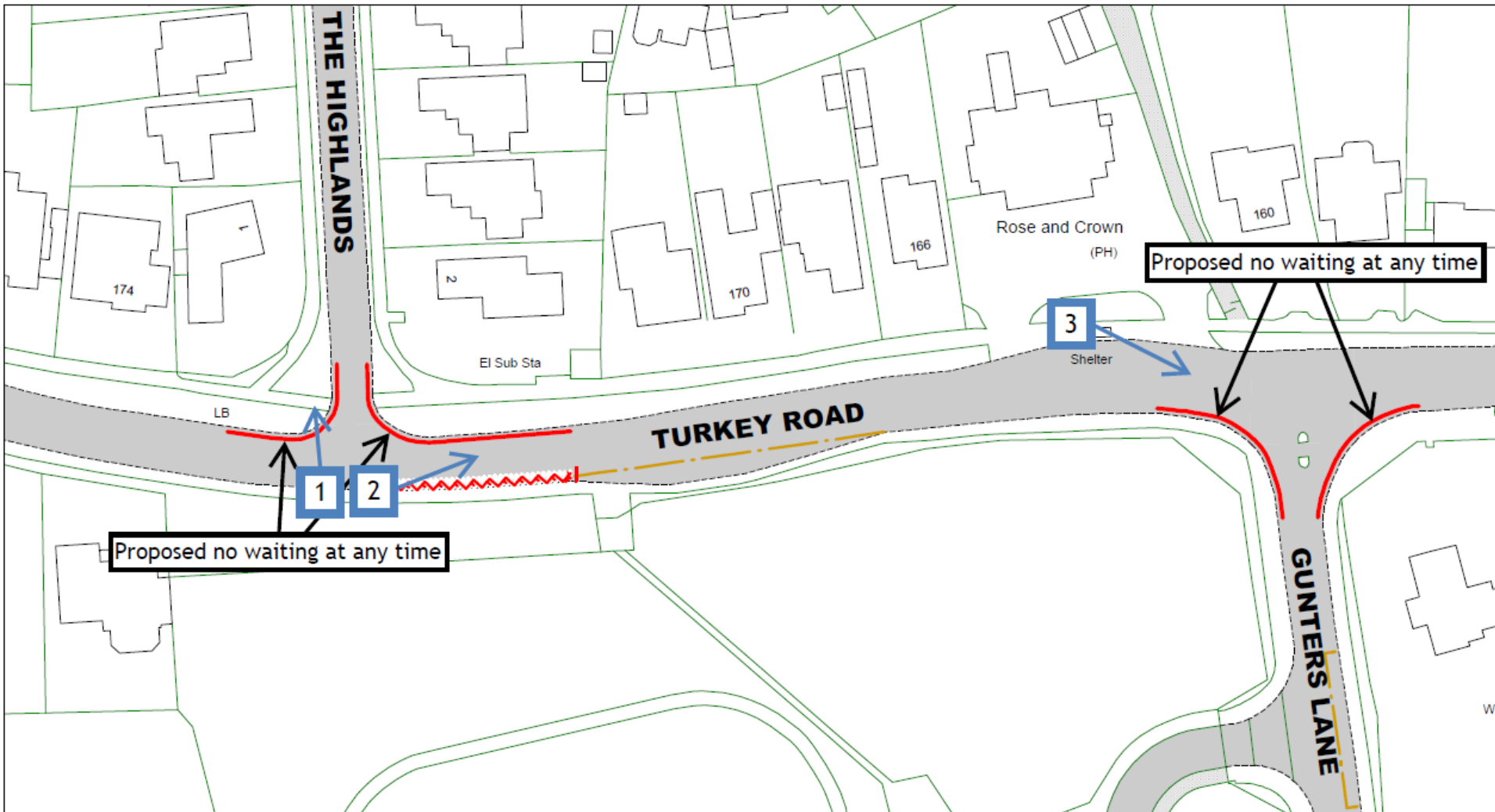
Site 3 – Gunters Lane, Bexhill







Site 4 – Turkey Road, Bexhill

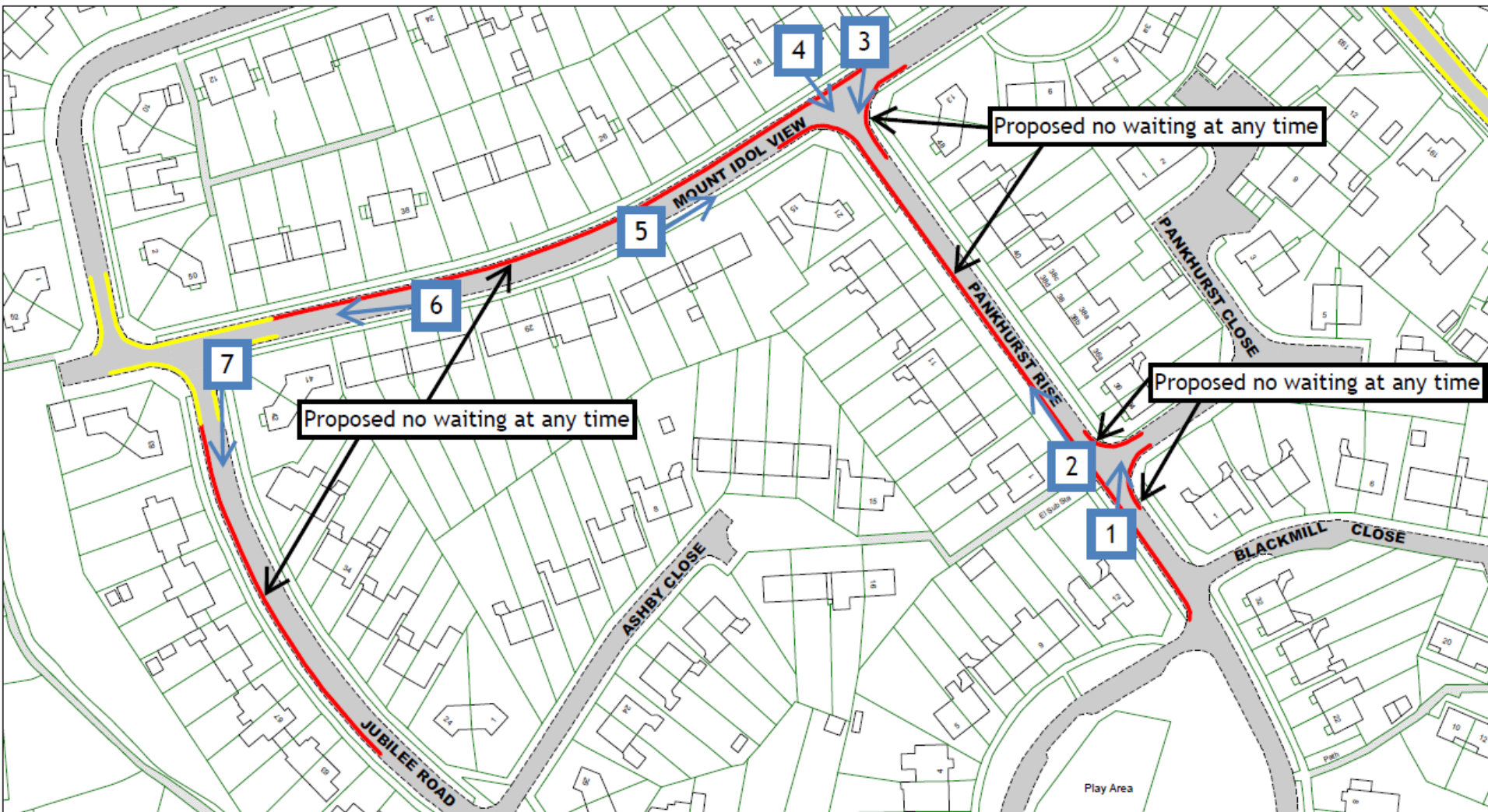








Site 5 – Jubilee Road, Mount Idol View and Pankhurst Rise, Bexhill





View 2 – Looking north west along Pankhurst Rise from outside no.1







View 5 – Looking east along Mount Idol View from outside no. 21

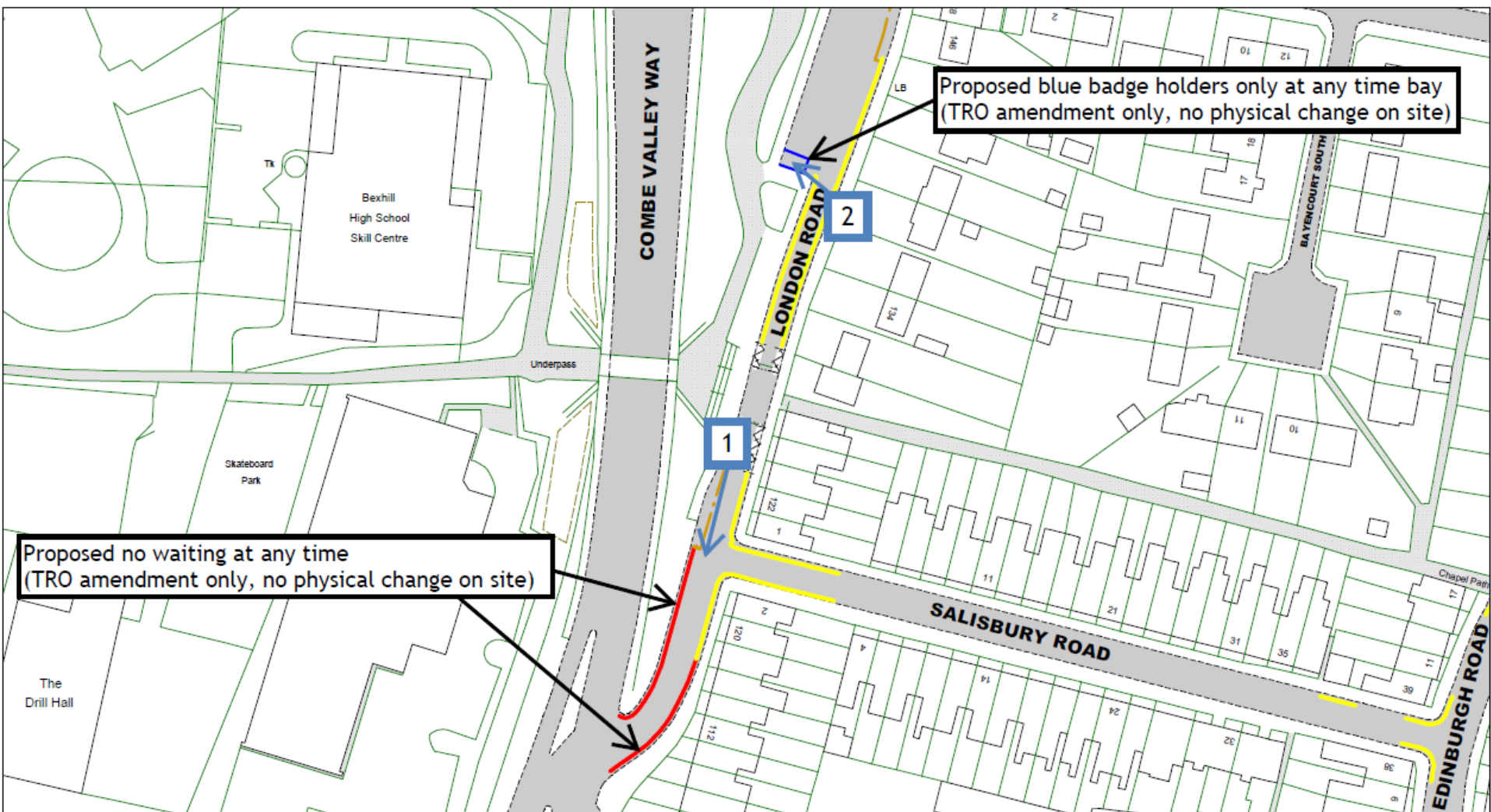


View 6 – Looking west along Mount Idol View from outside no. 33





Site 6 – London Road, Bexhill



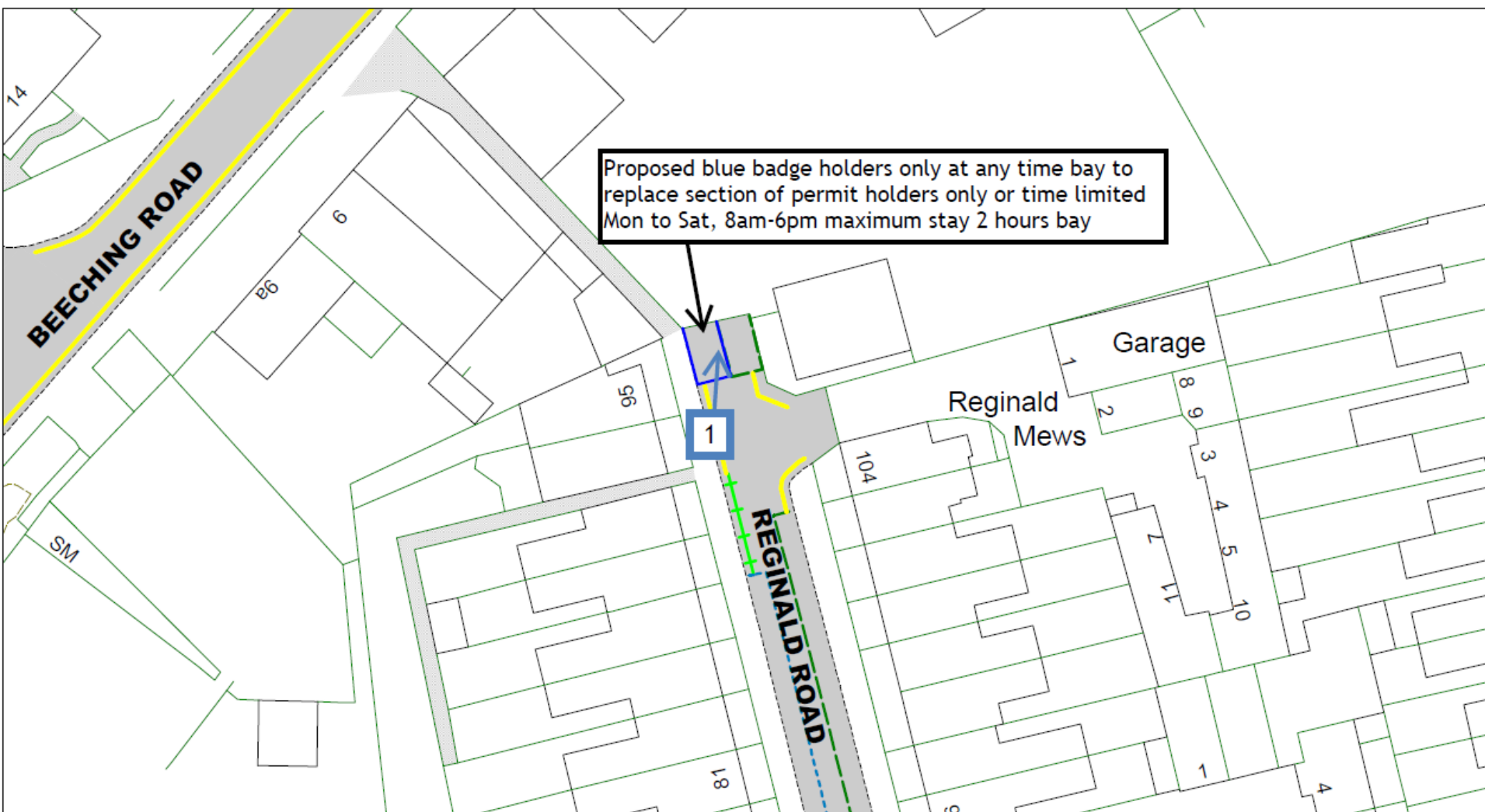
View 1 – Looking south along London Road from the bus stop clearway



View 2 – Looking west across London Road from no. 138



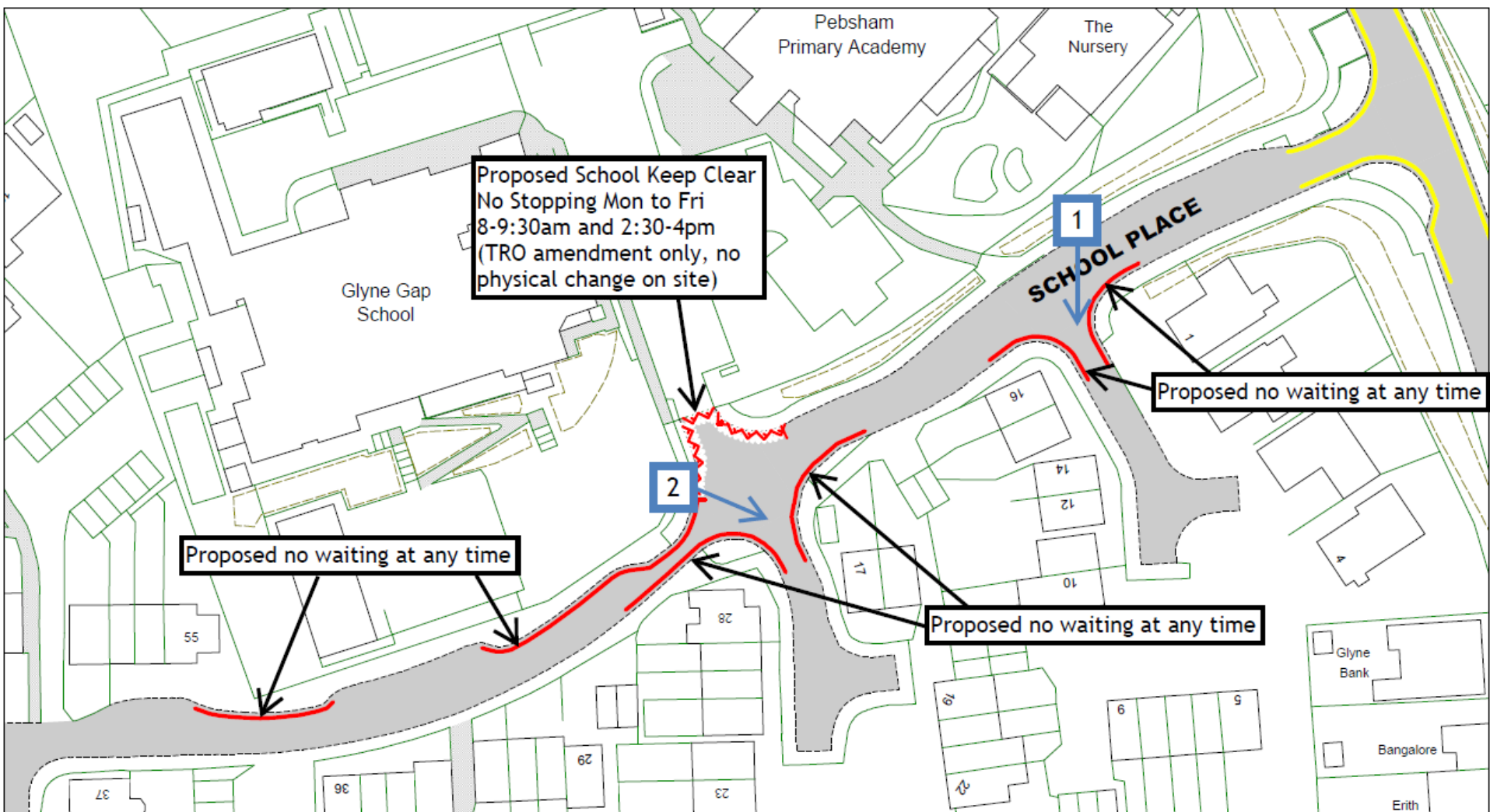
Site 7 – Reginald Road, Bexhill



View 1 – Looking north at the two parking bays from outside no. 93



Site 8 – School Place, Bexhill

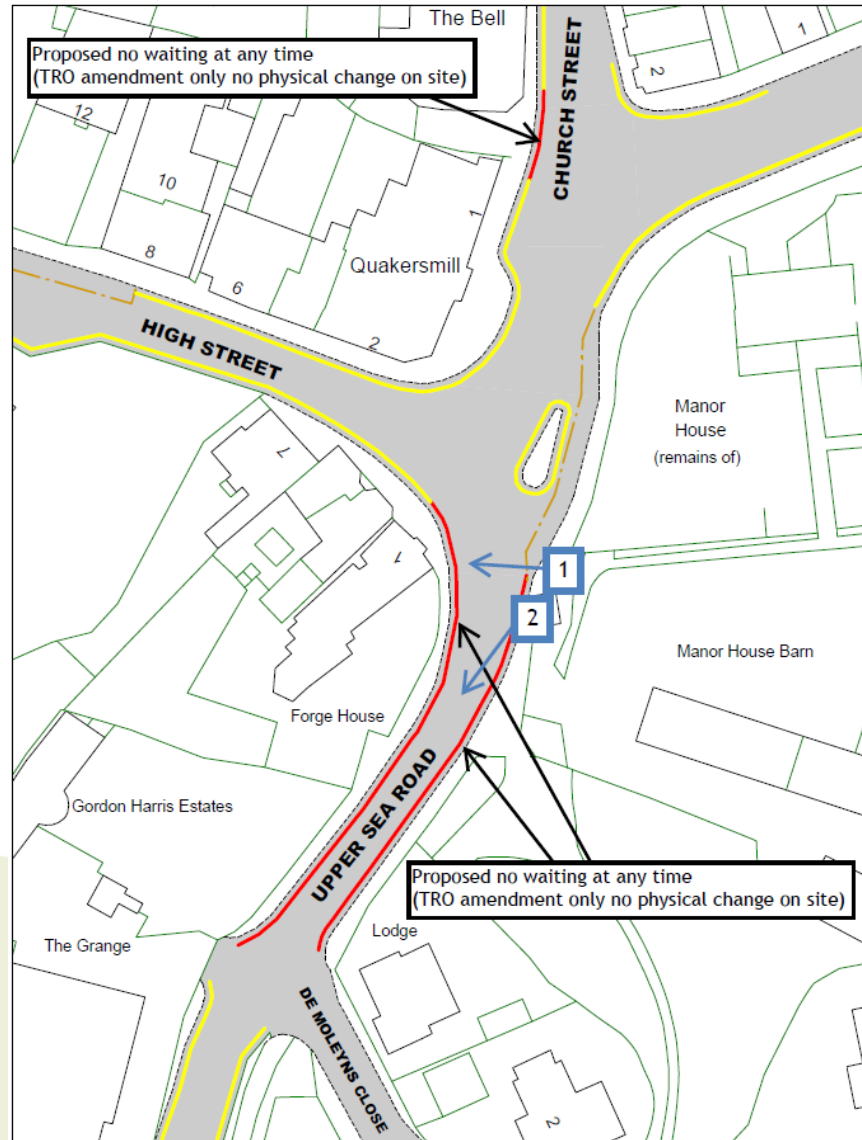




View 2 – Looking east across School Place from Glyne Gap School entrance



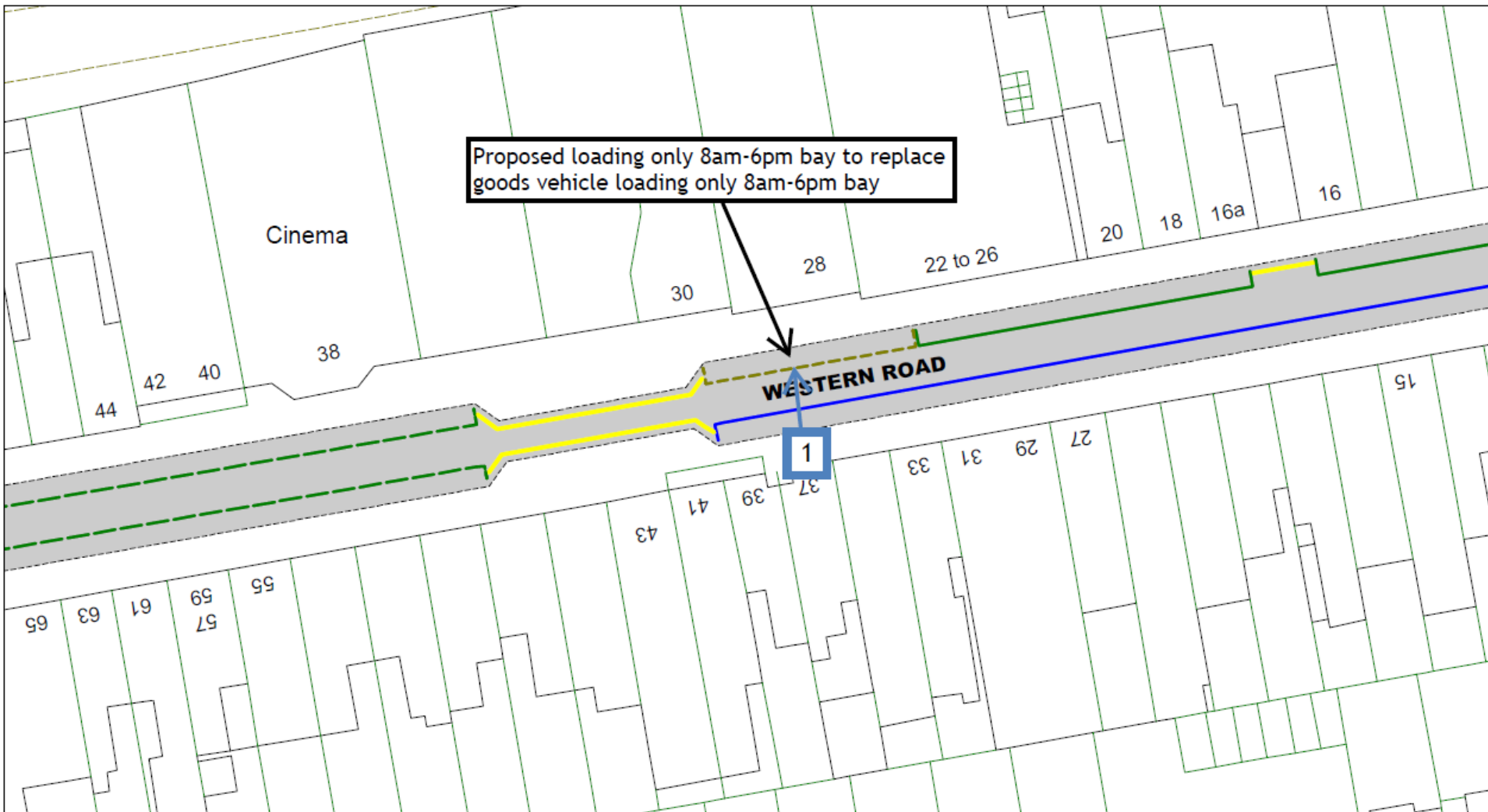
Site 9 – Upper Sea Road, Bexhill







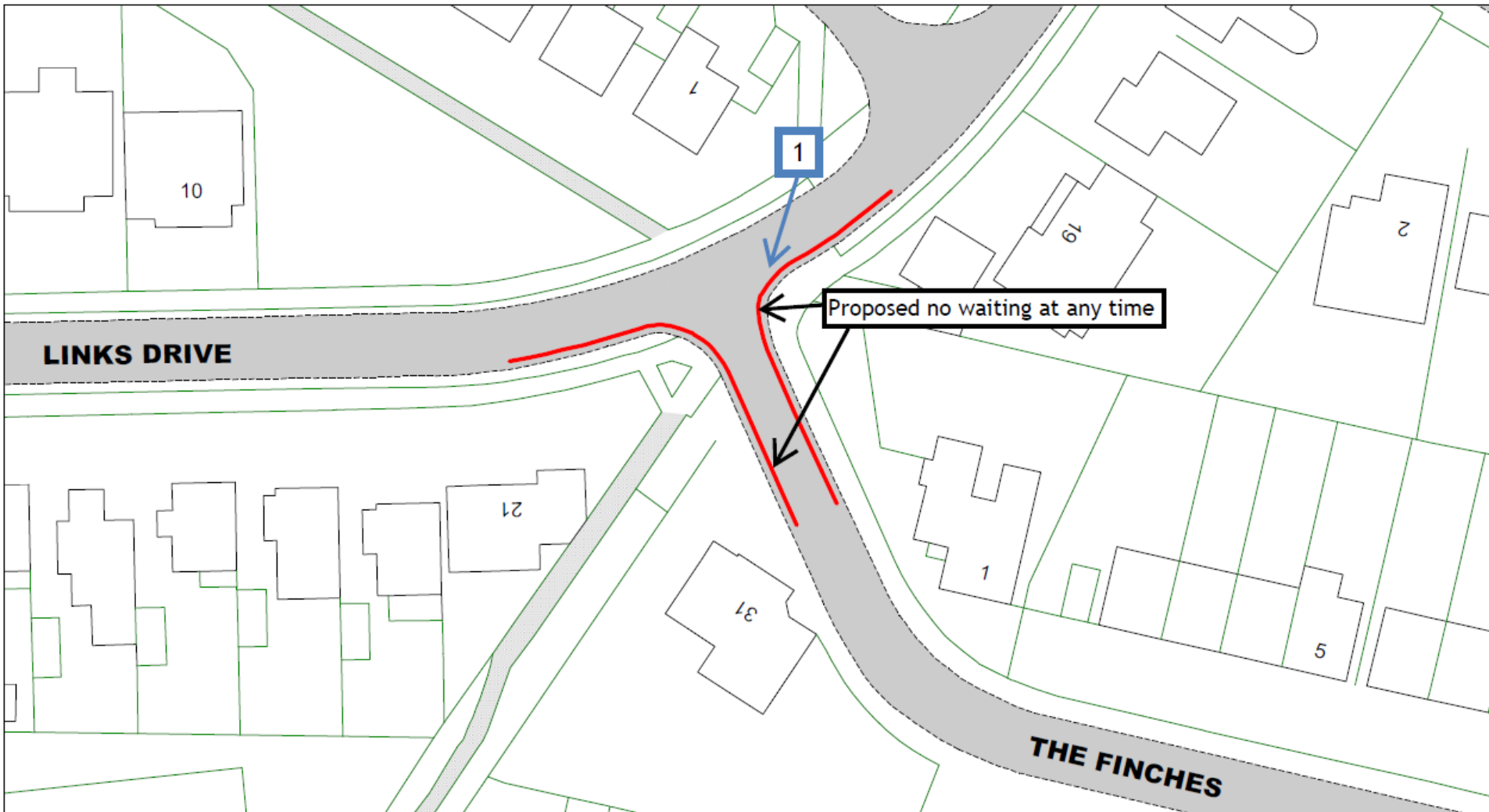
Site 10 – Western Road



View 1 - Looking north across Western Road at The Mall

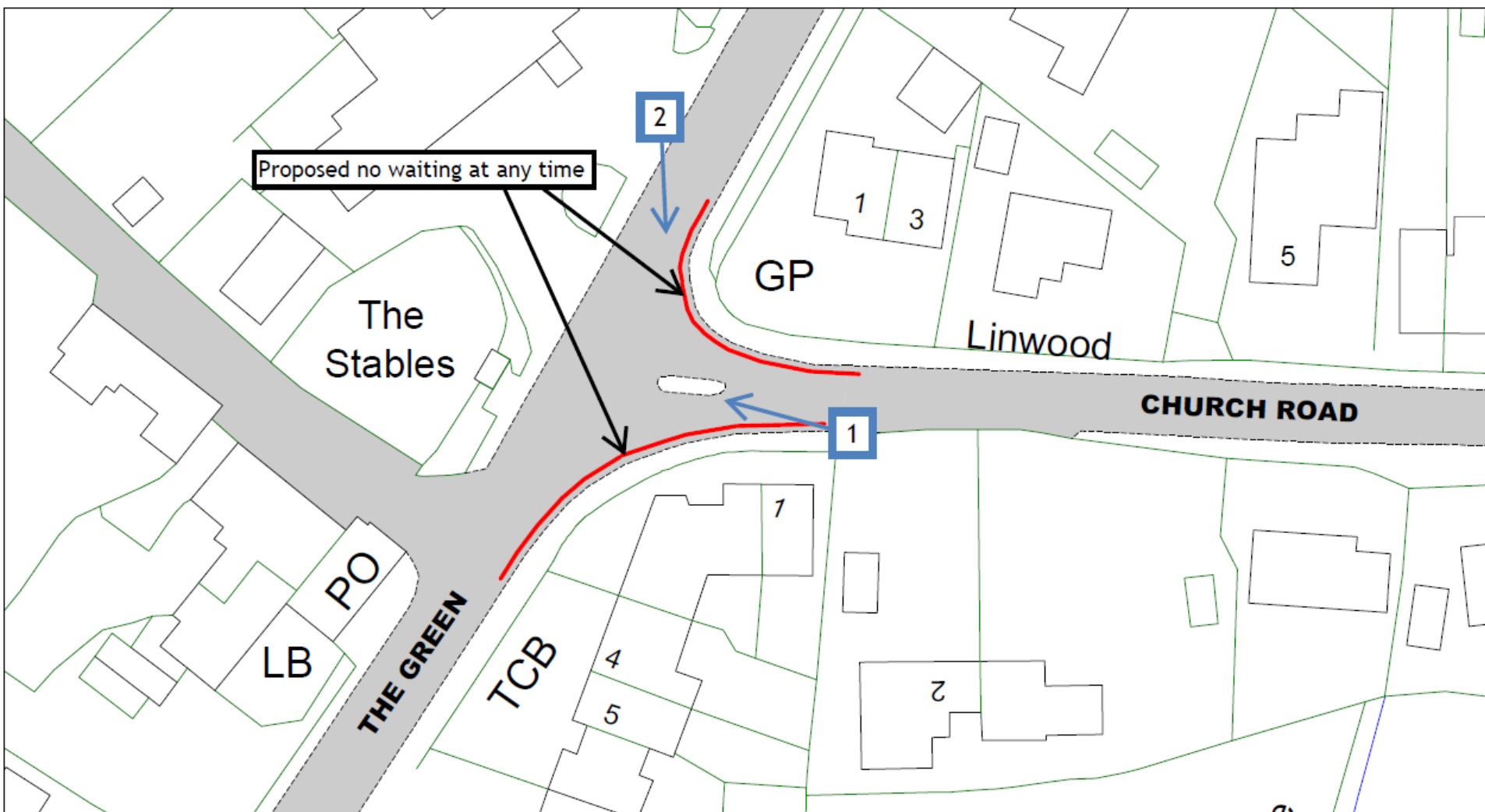


Site 11 – The Finches





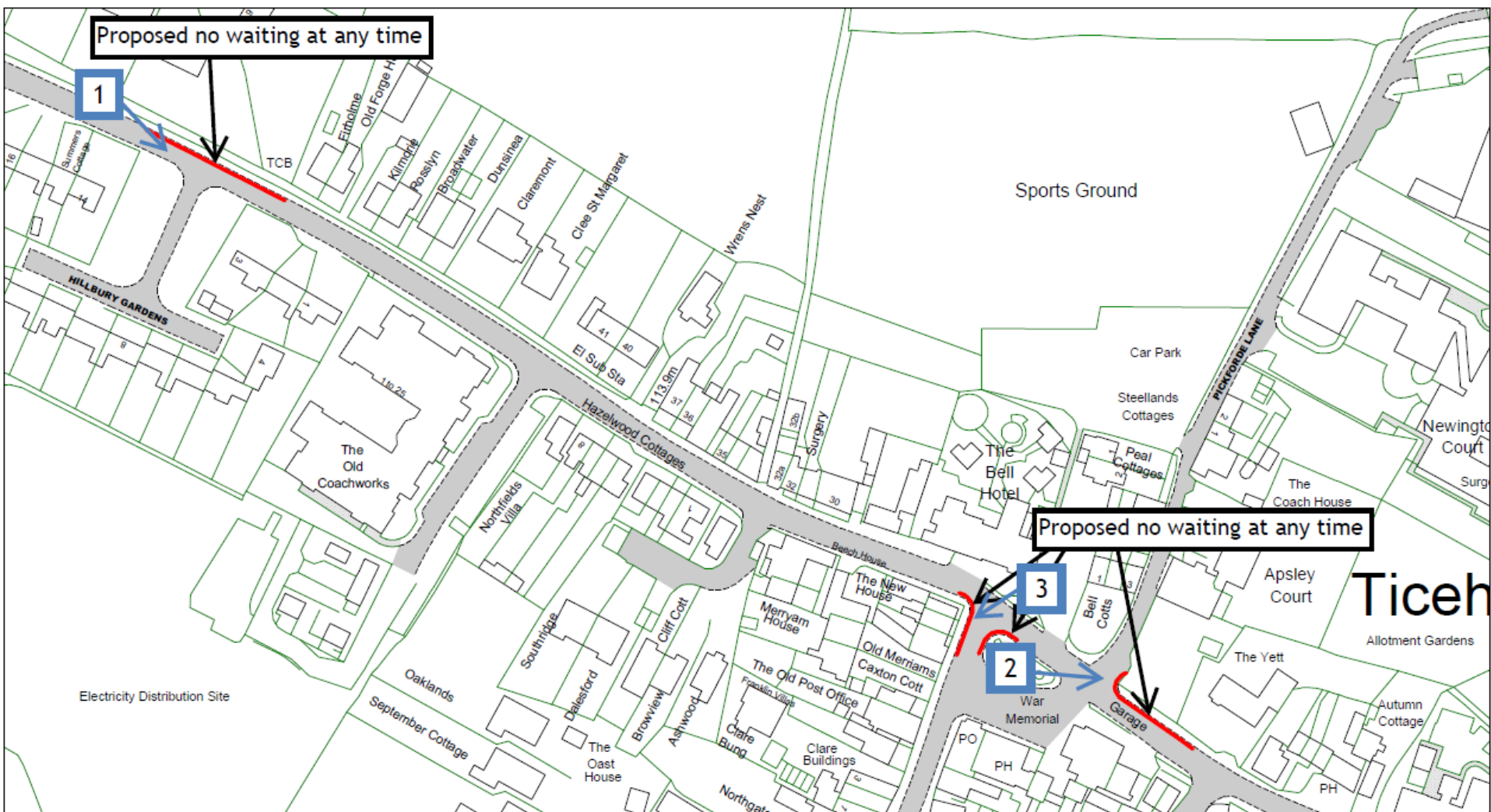
Site 12 – Church Road and The Green, Catsfield







Site 13 – High Street and Church Street, Ticehurst









Traffic Regulation Order: Rother Parking Review 2

Objections received to changes to parking and waiting restrictions proposed during the latest parking review in Rother District

East Sussex County Council Planning Committee 10 July 2024