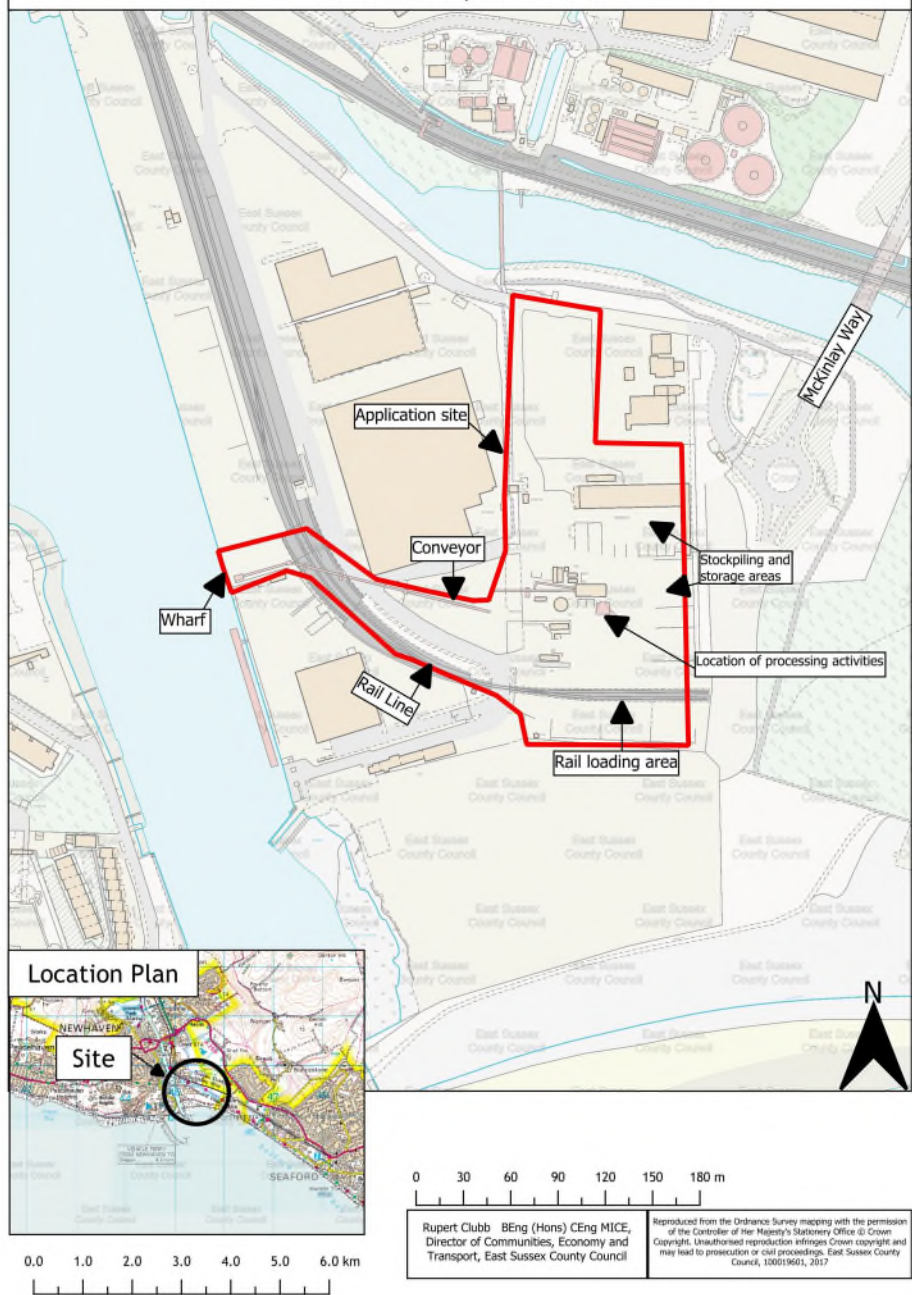


East Sussex County Council Planning Committee 17 September 2025

LW/896/CM – Fisher's Wharf, East Quay, Newhaven Port, Newhaven BN9 0BN

Variation of Condition 3 of planning permission
LW/799/CM(EIA) to extend the hours of working

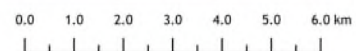
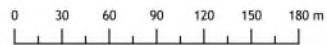
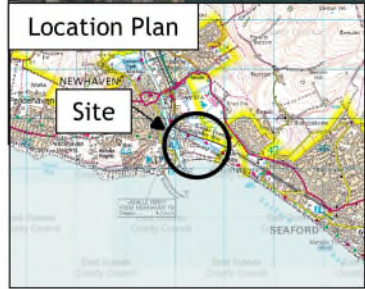
LW/896/CM - Fisher's Wharf, East Quay, Newhaven Port, Newhaven, BN9 0BN



Rupert Clubb BEng (Hons) CEng MICE,
Director of Communities, Economy and
Transport, East Sussex County Council

Reproduced from the Ordnance Survey mapping with the permission
of the Controller of Her Majesty's Stationery Office & Crown
Copyright. Unauthorised reproduction infringes Crown copyright and
may lead to prosecution or civil proceedings. East Sussex County
Council, 100519601, 2017

LW/896/CM - Fisher's Wharf, East Quay, Newhaven Port, Newhaven, BN9 0BN

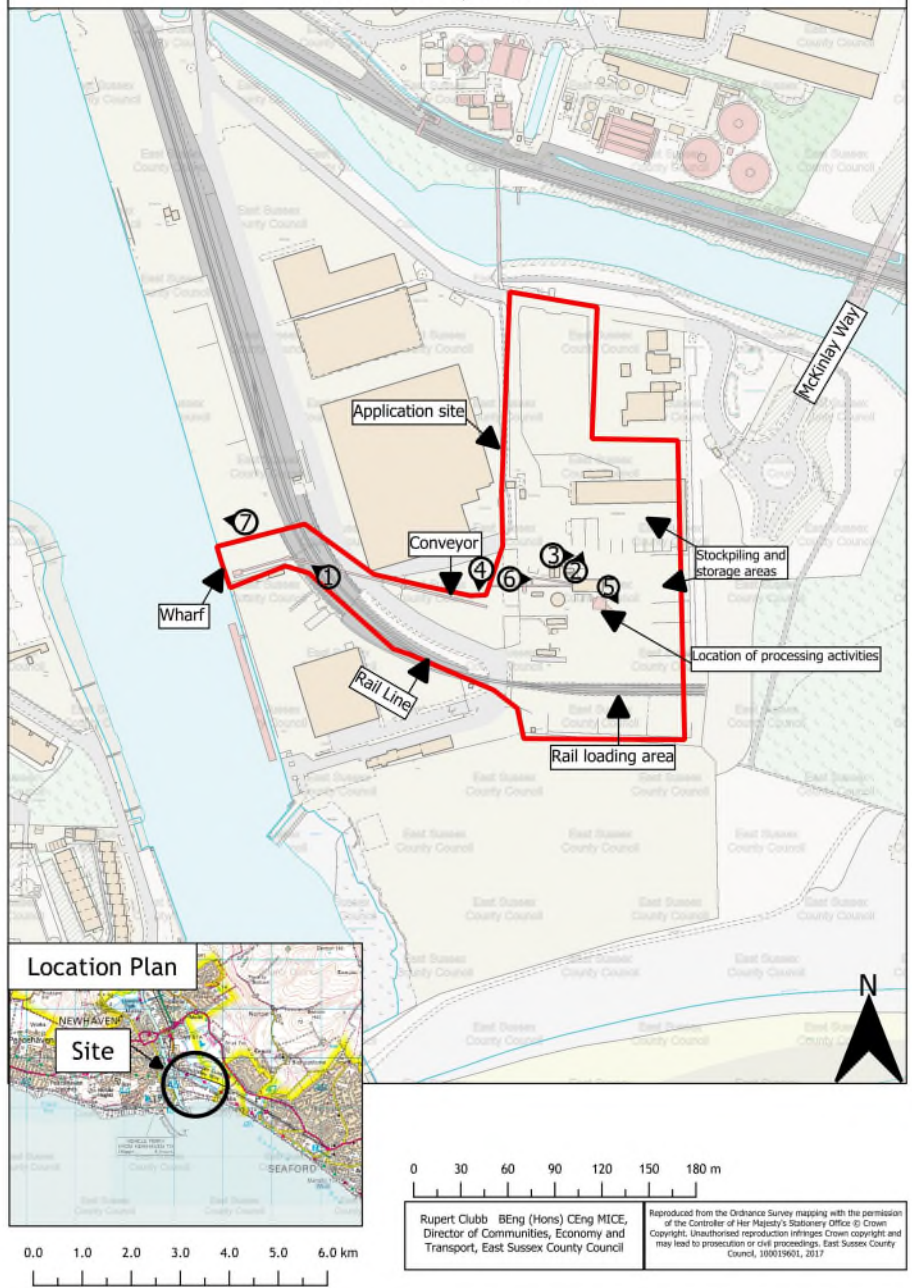


Rupert Clubb BEng (Hons) CEng MICE,
Director of Communities, Economy and
Transport, East Sussex County Council

Reproduced from the Ordnance Survey mapping with the permission
of the Controller of Her Majesty's Stationary Office © Crown
Copyright. Unauthorised reproduction infringes Crown copyright and
may lead to prosecution or civil proceedings. East Sussex County
Council, 100019601, 2017

Viewpoints Plan

LW/896/CM - Fisher's Wharf, East Quay, Newhaven Port, Newhaven, BN9 0BN



View 1 – Looking northwest towards wharf.















LW/896/CM – Fisher's Wharf, East Quay, Newhaven Port, Newhaven BN9 0BN

Variation of Condition 3 of planning permission
LW/799/CM(EIA) to extend the hours of working

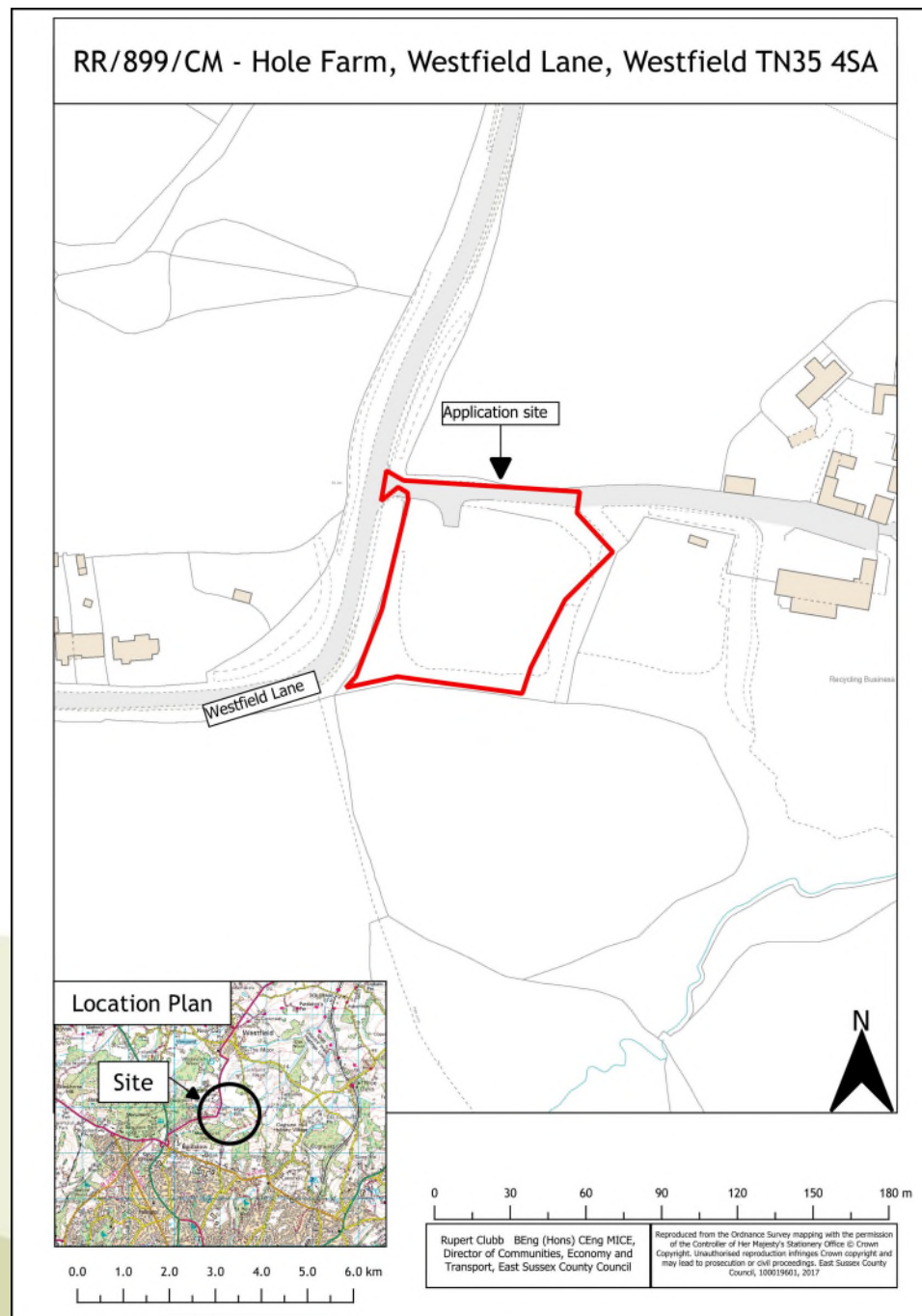
East Sussex County Council Planning Committee 17 September 2025

East Sussex County Council Planning Committee 17 September 2025

RR/899/CM – Hole Farm, Westfield Lane, Westfield, TN35 4SA

Use of land for the importation , deposit, storage & processing for recycling and recovery of skip waste comprising construction, demolition and excavation waste, commercial and industrial, and household waste (part retrospective) including construction of new concrete hardstanding and storage bays.

Location Plan



Aerial Plan

RR/899/CM - Hole Farm, Westfield Lane, Westfield TN35 4SA



Location Plan



0.0 1.0 2.0 3.0 4.0 5.0 6.0 km

0 30 60 90 120 150 180 m

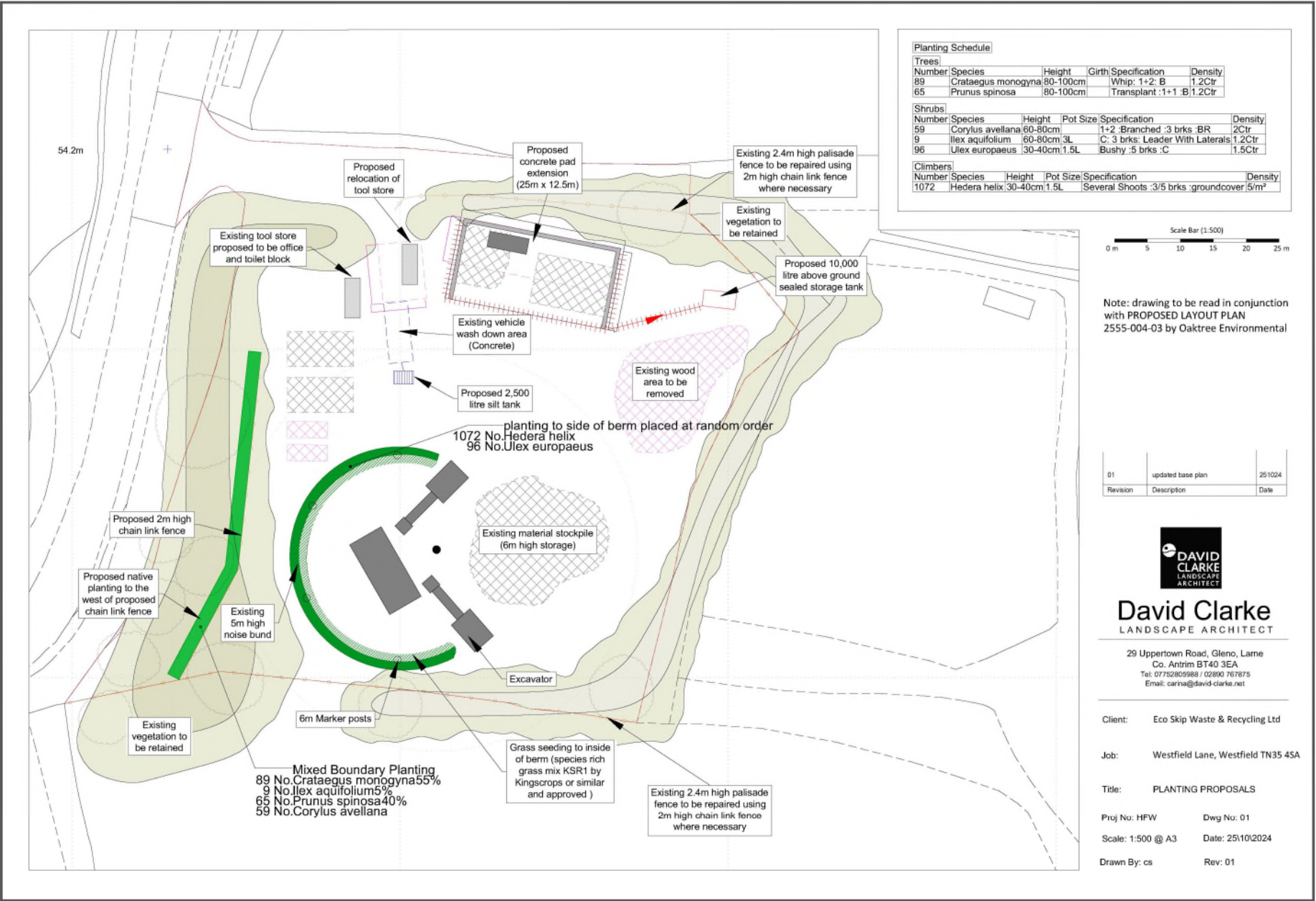
Rupert Clubb BEng (Hons) CEng MICE,
Director of Communities, Economy and
Transport, East Sussex County Council

Reproduced from the Ordnance Survey mapping with the permission
of the Controller of Her Majesty's Stationery Office © Crown
Copyright. Unauthorised reproduction infringes Crown copyright and
may lead to prosecution or civil proceedings. East Sussex County
Council, 100019601, 2017

Proposed Layout Plan

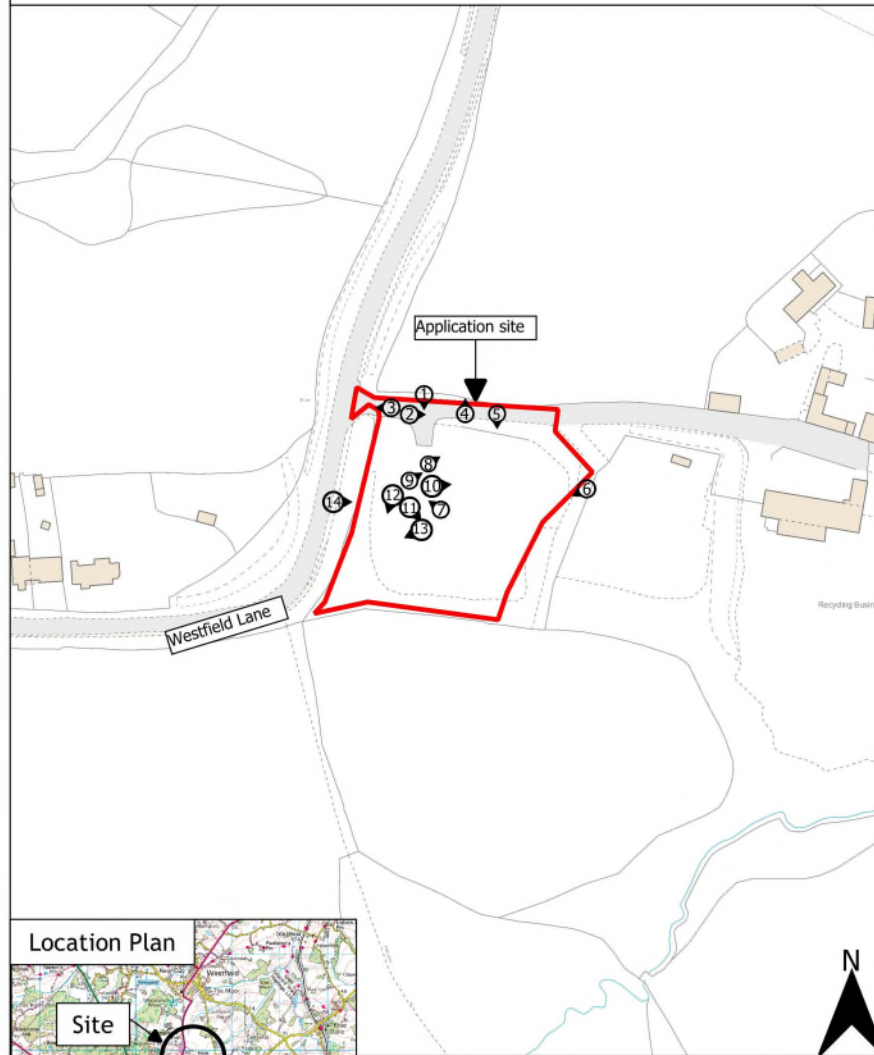


Proposed planting plan



Viewpoints Plan

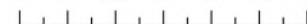
RR/899/CM - Hole Farm, Westfield Lane, Westfield TN35 4SA



Location Plan



0.0 1.0 2.0 3.0 4.0 5.0 6.0 km



0 30 60 90 120 150 180 m

Rupert Clubb BEng (Hons) CEng MICE,
Director of Communities, Economy and
Transport, East Sussex County Council

Reproduced from the Ordnance Survey mapping with the permission
of the Controller of Her Majesty's Stationery Office © Crown
Copyright. Unauthorised reproduction infringes Crown copyright and
may lead to prosecution or civil proceedings. East Sussex County
Council, 100019603, 2017

View 1 – Looking south towards Site entrance (November 2024).





























RR/899/CM – Hole Farm, Westfield Lane, Westfield TN35 4SA

Use of land for the importation , deposit, storage & processing for recycling and recovery of skip waste comprising construction, demolition and excavation waste, commercial and industrial, and household waste (part retrospective) including construction of new concrete hardstanding and storage bays.

East Sussex County Council Planning Committee 17 September 2025