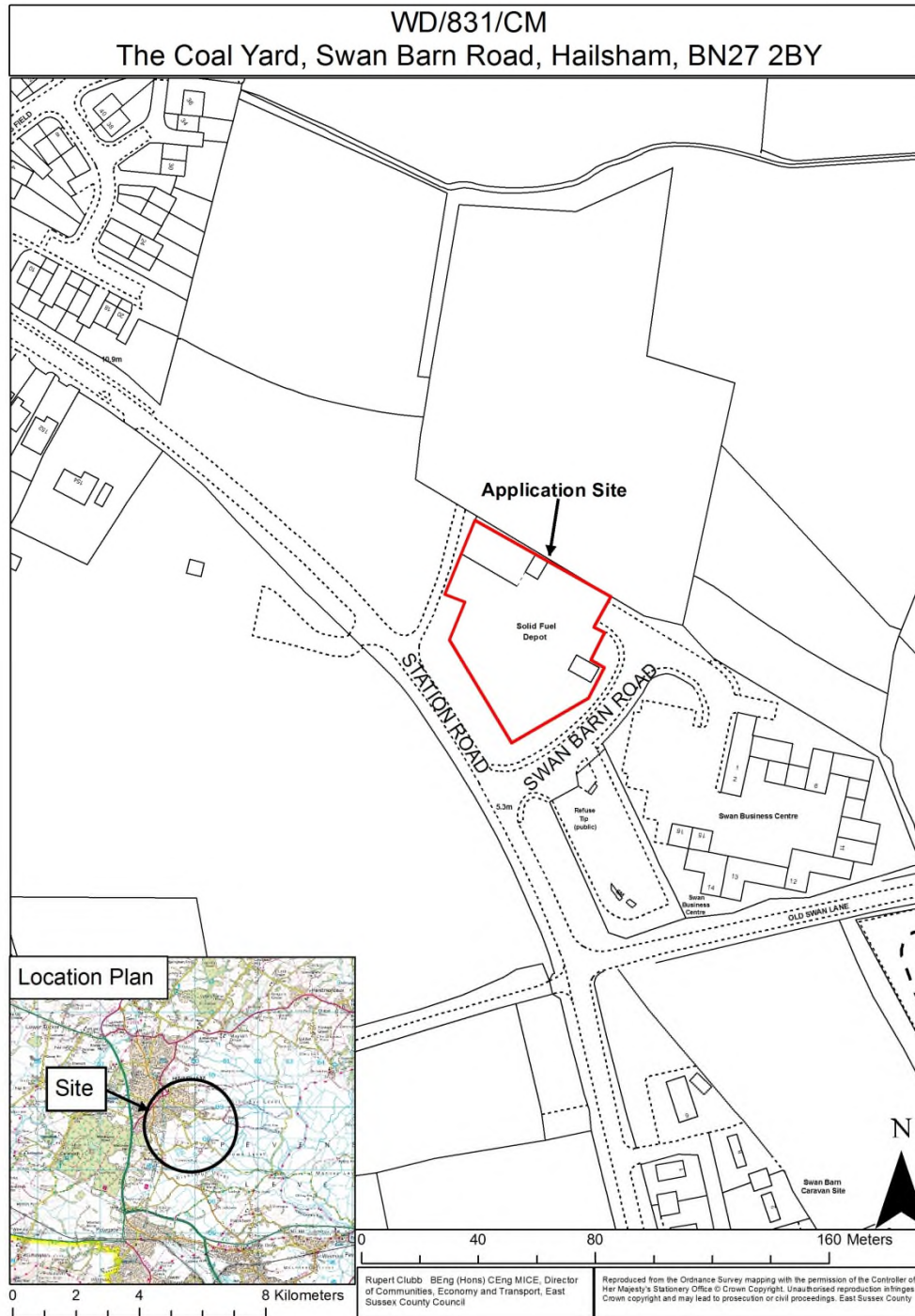


WD/831/CM

Change of use of coal yard and existing building to a tyre recycling and crumb and bale production facility.

The Coal Yard, Swan Barn Road, Hailsham, BN27 2BY.



WD/831/CM
The Coal Yard, Swan Barn Road, Hailsham, BN27 2BY



PLAN SHOWING BLOCK PLAN OF SITE

PYRITE INDUSTRIES LTD



BLOCK PLAN
THE COAL YARD, SWAN BARN BUSINESS CENTRE, HAILSHAM

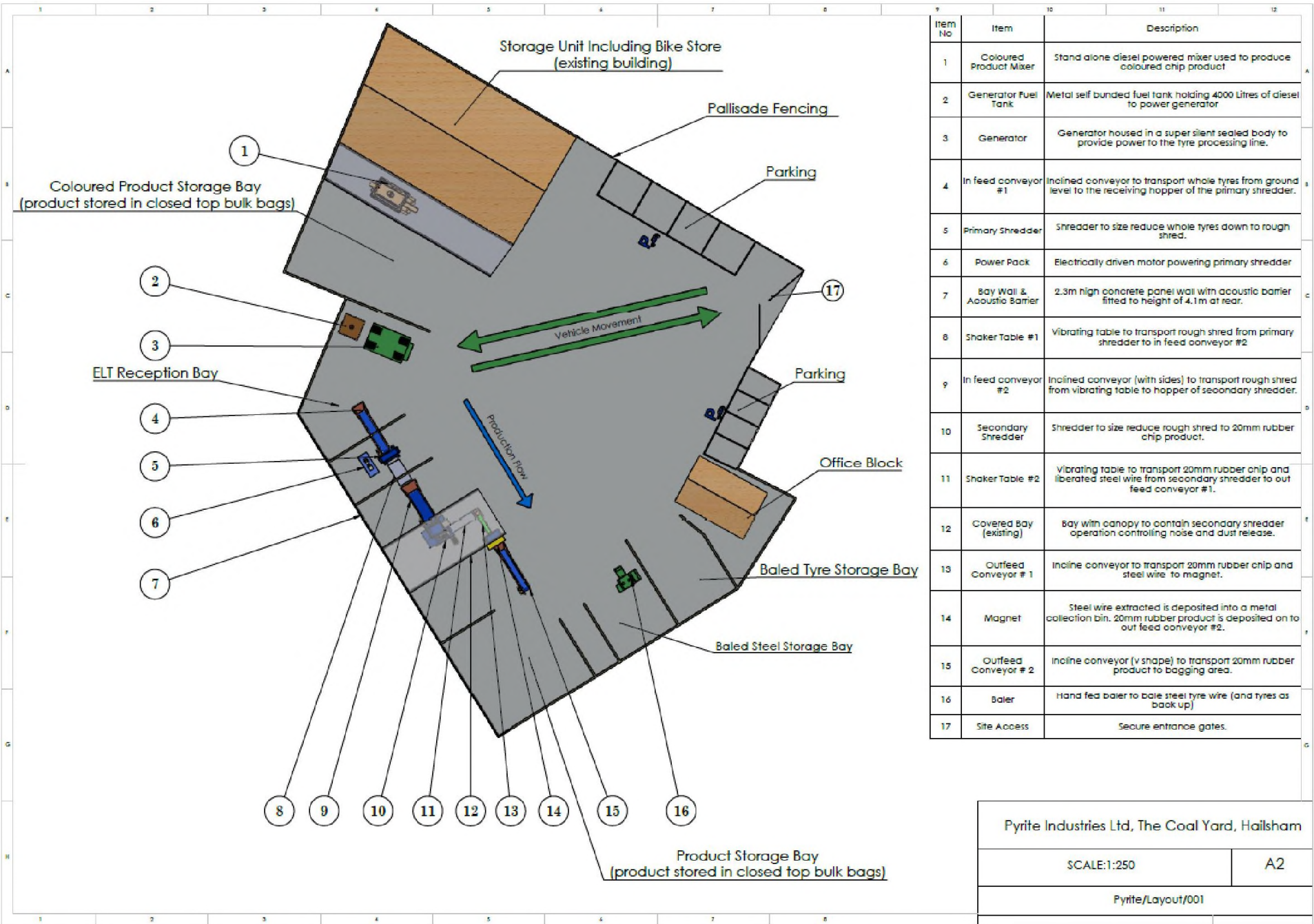
SCALE 1:1500 @ A3



FOB Design (UK) Ltd
72A Water Lane,
Wilmington, Cheshire, SK9 5BB
01625 251644
office@fob-design.com www.fob-design.com

REV		DATE		Drawn by
Copyright of fob-design (UK) Ltd. all rights reserved. No part of this publication may be reproduced, stored in a retrieval system, or transmitted, in any form or by any means, electronic, mechanical, photocopying, recording, or by any information storage or retrieval system, without prior written permission from fob-design (UK) Ltd.				
THE COAL YARD				
HAILSHAM				
XXX				
XXX				
Drawn	XXX	Scale	XXX	Date
Checked	XXX	Original	A3	07.08.19
SK 02				1:1500@A3

PROPOSED SITE LAYOUT PLAN



View 1 - Access Road (Swan Barn Road)



View 2 - Entrance to the site from Swan Barn Road

56





View 4 - View south towards the site office and storage bays where processing line is proposed

58



View 5 - View northwest towards the metal sheet building proposed for tyre storage, and the enclosed area proposed for colouring

59



WD/831/CM

Change of use of coal yard and existing building to a tyre recycling and crumb and bale production facility.

The Coal Yard, Swan Barn Road, Hailsham, BN27 2BY.