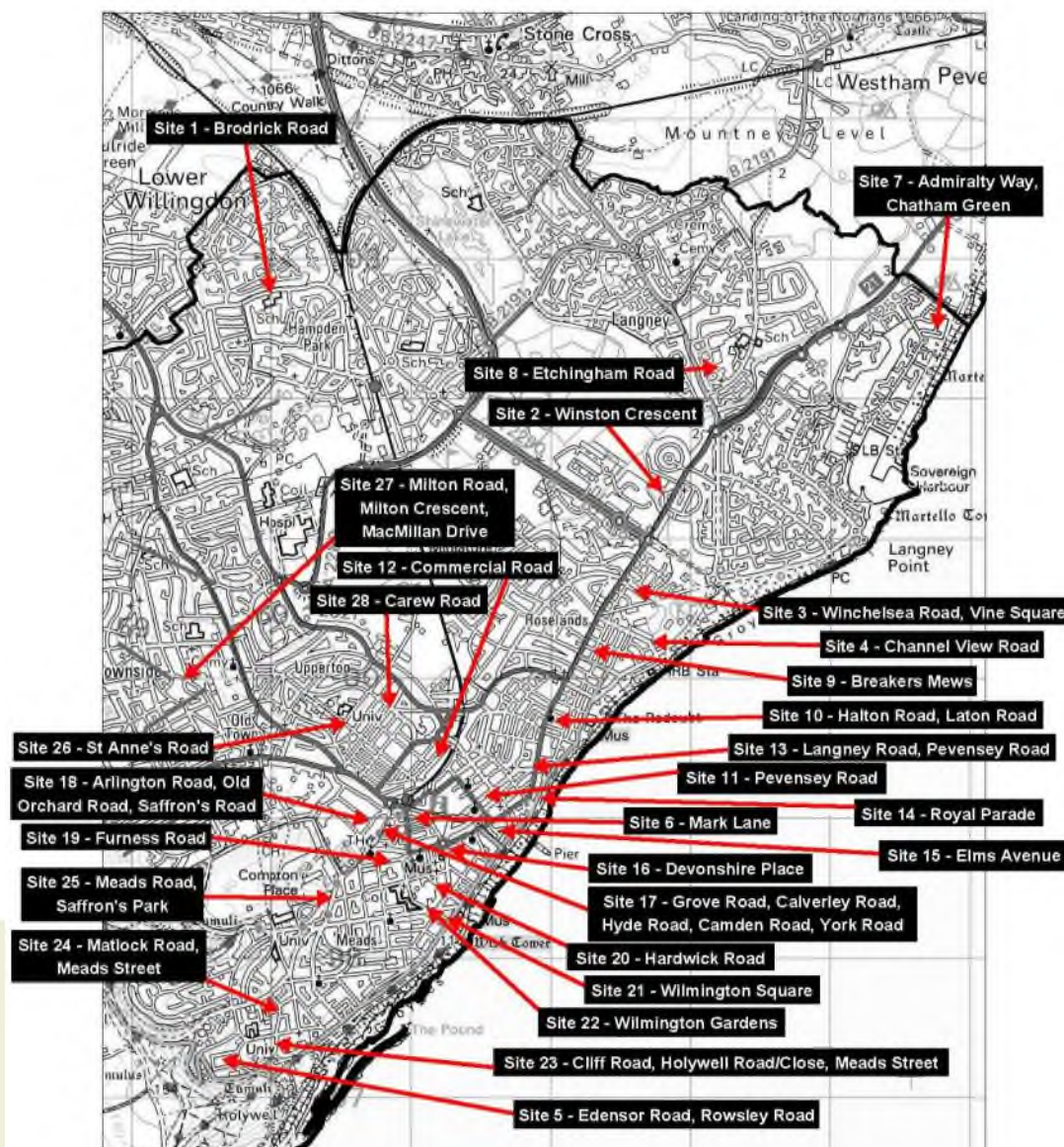


# **East Sussex County Council Planning Committee 12 February 2020**

Agenda Item 5

# **Traffic Regulation Order: Eastbourne Parking Review 2019**

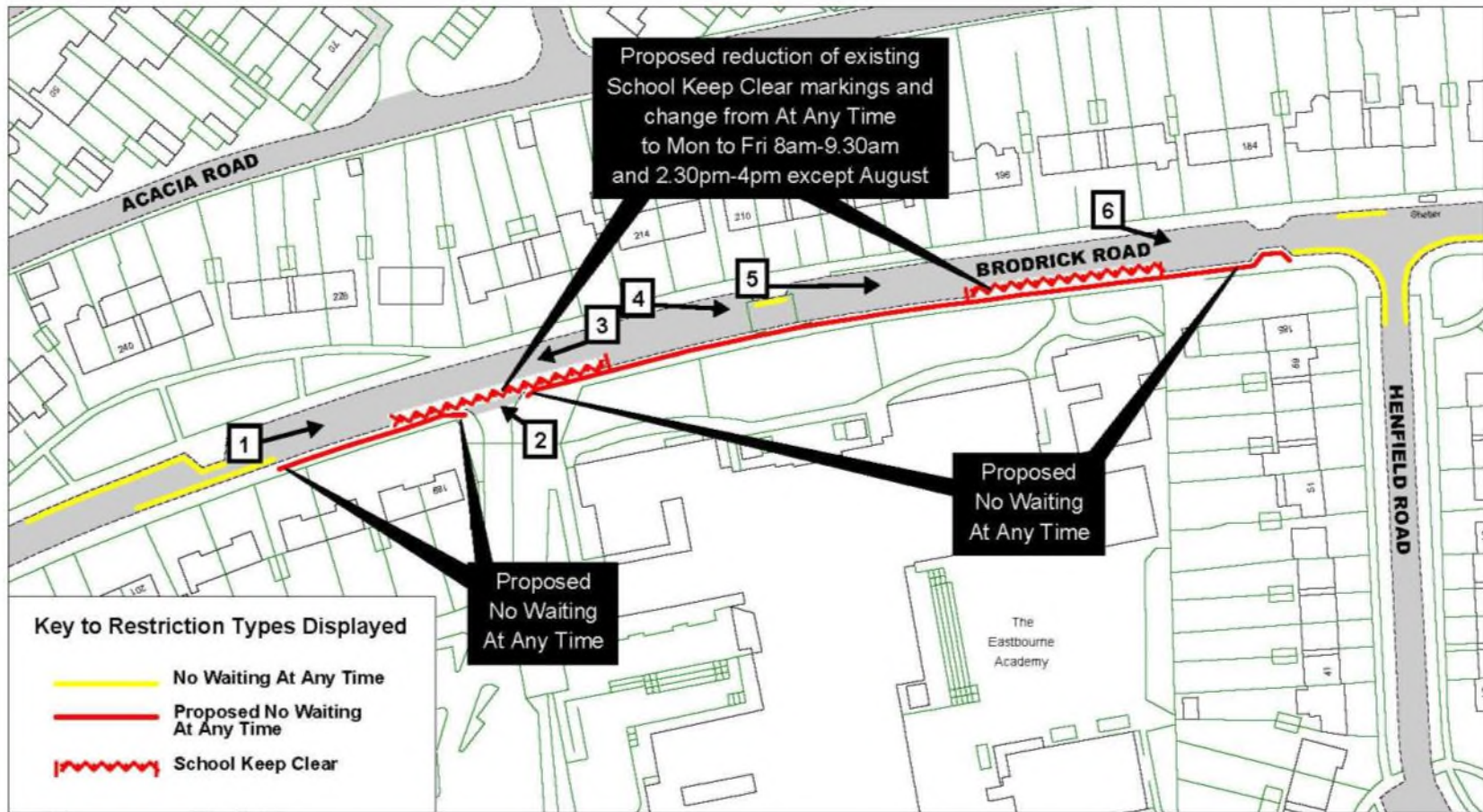
Objections received to changes to parking and waiting restrictions proposed during the latest parking review in Eastbourne Borough.



Eastbourne Parking Review 2019 - Sites attracting objections



## Site 1 - Brodrick Road







View 1 – Looking north-eastwards along Brodrick Road





View 2 – Looking north-westwards across Brodrick Road



View 3 – Looking south-westwards across Brodrick Road





View 4 – Looking south-eastwards across Brodrick Road



View 5 – Looking south-eastwards across Brodrick Road

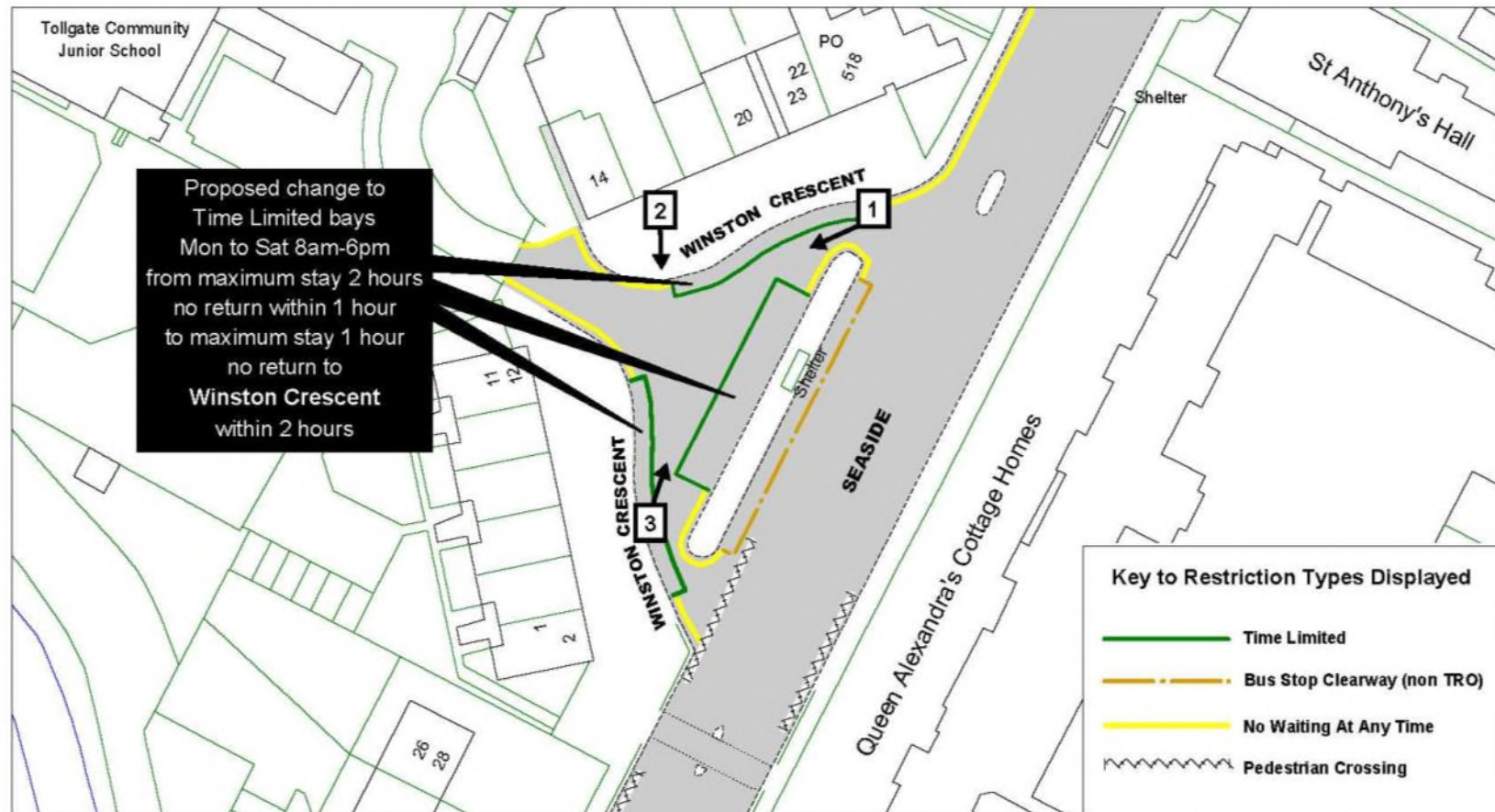




View 6 – Looking south-eastwards across Brodrick Road



## Site 2 – Winston Crescent





View 1 – Looking south-west along Winston Crescent





View 2 – Looking south across Winston Crescent

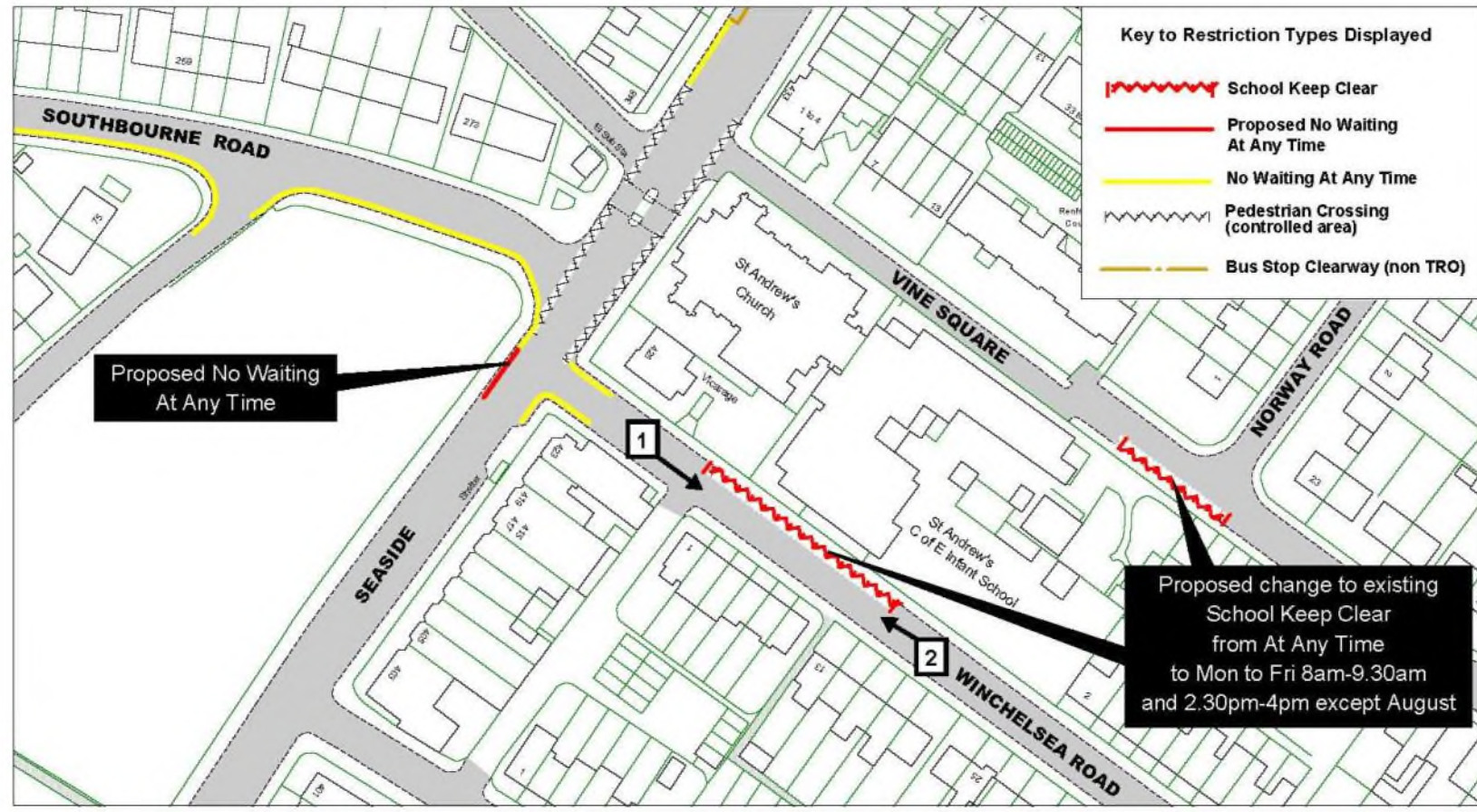




View 3 – Looking north along Winston Crescent



## Site 3 – Winchelsea Road, Vine Square





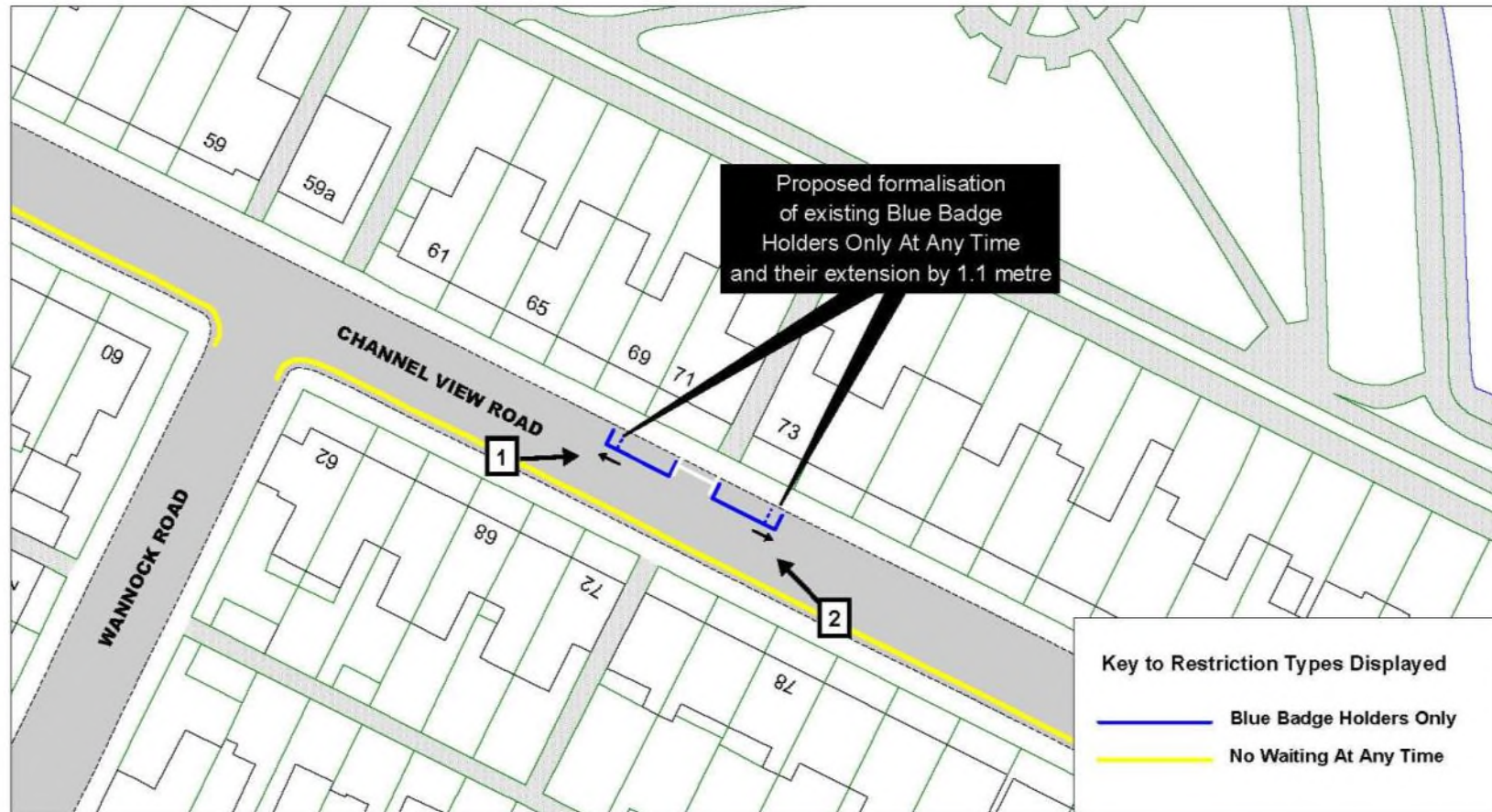
View 1 – Looking south-eastwards along Winchelsea Road





View 2 – Looking north-westwards along Winchelsea Road

## Site 4 – Channel View Road







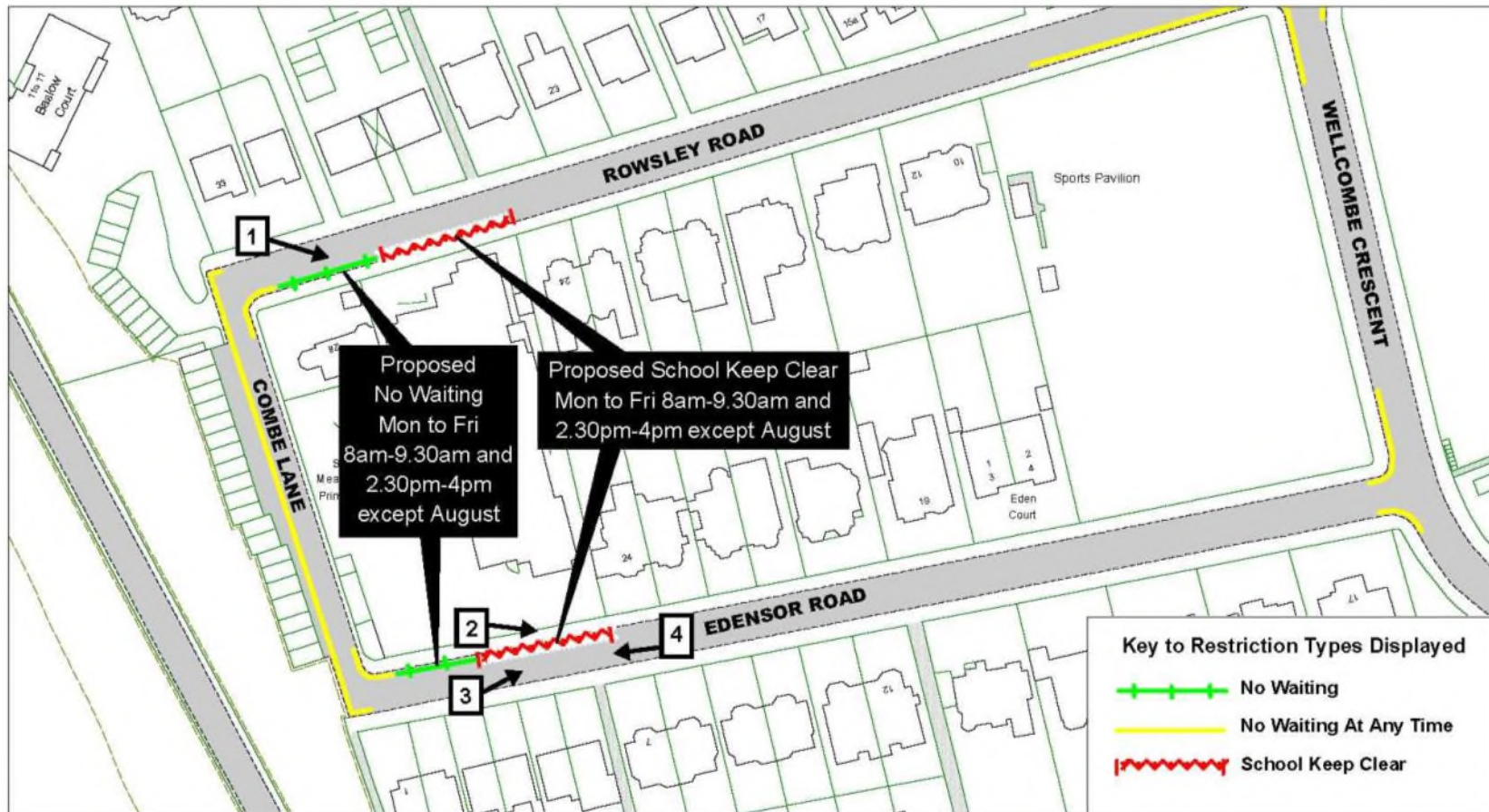
View 1 – Looking north-eastwards at No. 71 Channel View Road



View 2 – Looking north-westwards across Channel View Road



## Site 5 – Edensor Road and Rowsley Road





View 4 – Looking south-eastwards at the entrance to the school in Rowsley Road





View 1 – Looking south-eastwards across Edensor Road



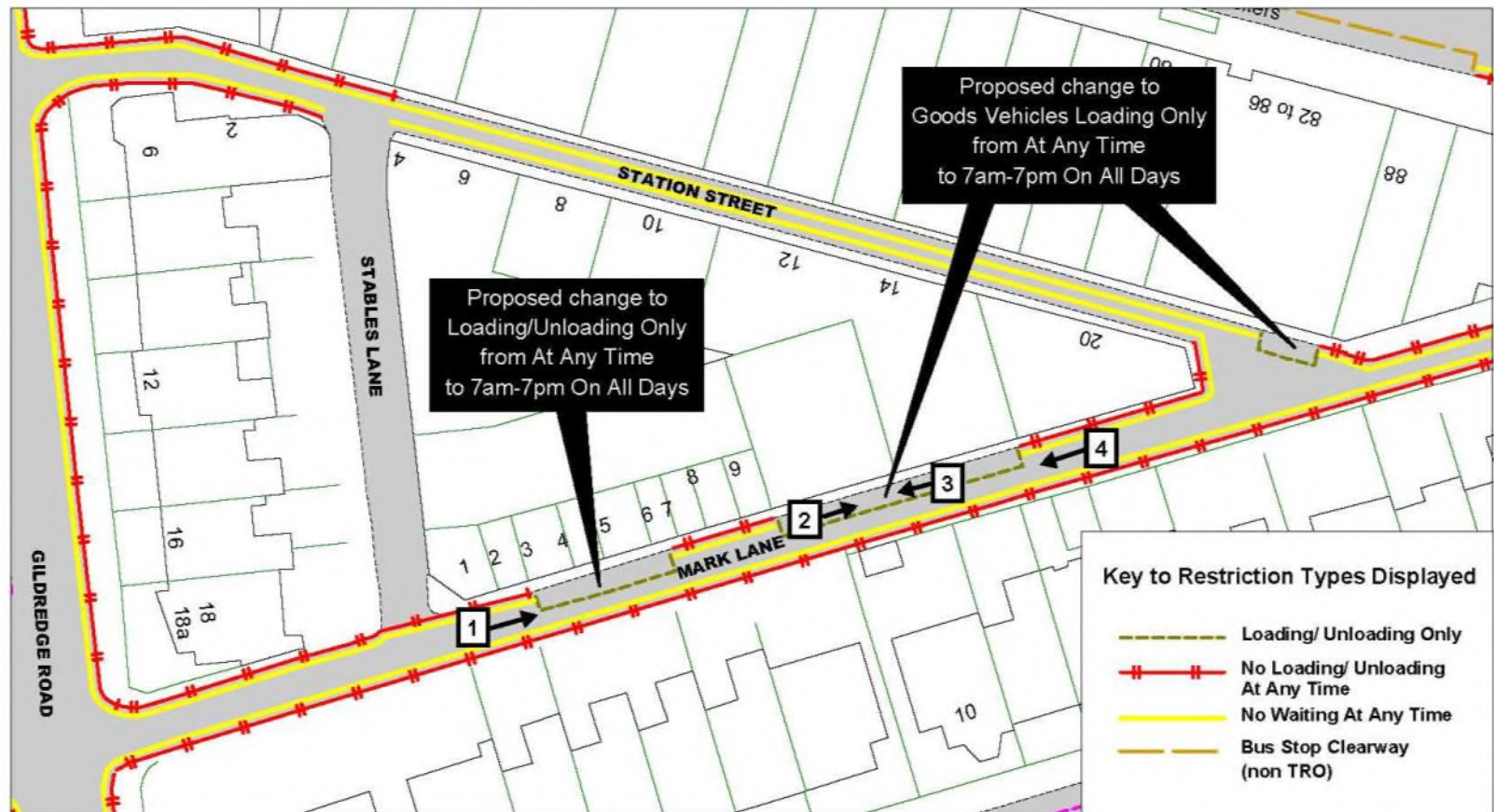
View 3 – Looking north-eastwards along Edensor Road





View 4 – Looking south-westwards along Edensor Road

## Site 6 – Mark Lane







View 1 – Looking north-eastwards along Mark Lane



View 2 – Looking north-eastwards along the pavement in Mark Lane





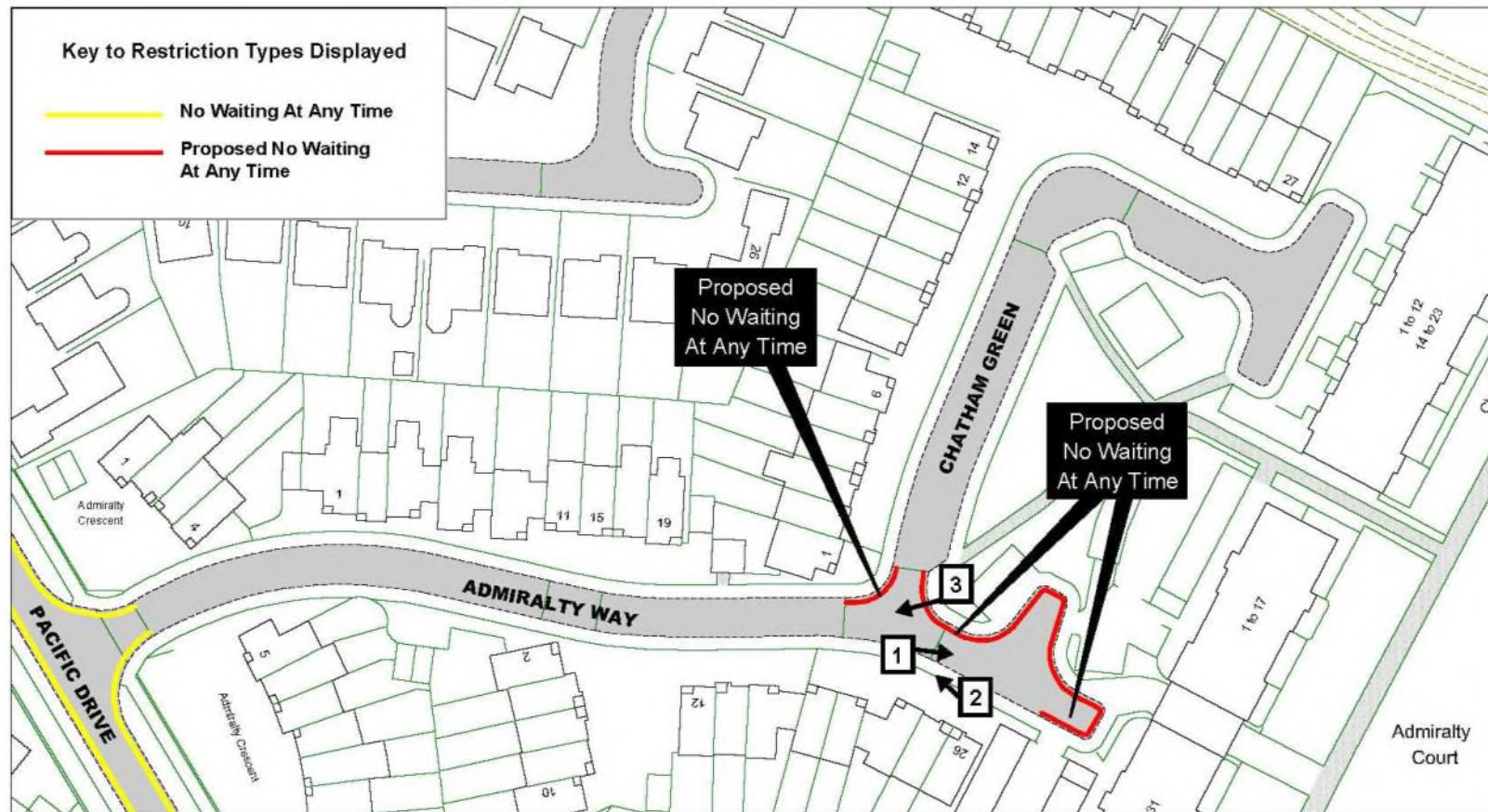
View 3 – Looking south-westwards along Mark Lane



View 4 – Looking south-westwards along Mark Lane



## Site 7 – Admiralty Way and Chatham Green





View 1 – Looking eastwards at Admiralty Court





View 2 – Looking north-westwards at the junction of Admiralty Way and Chatham Green

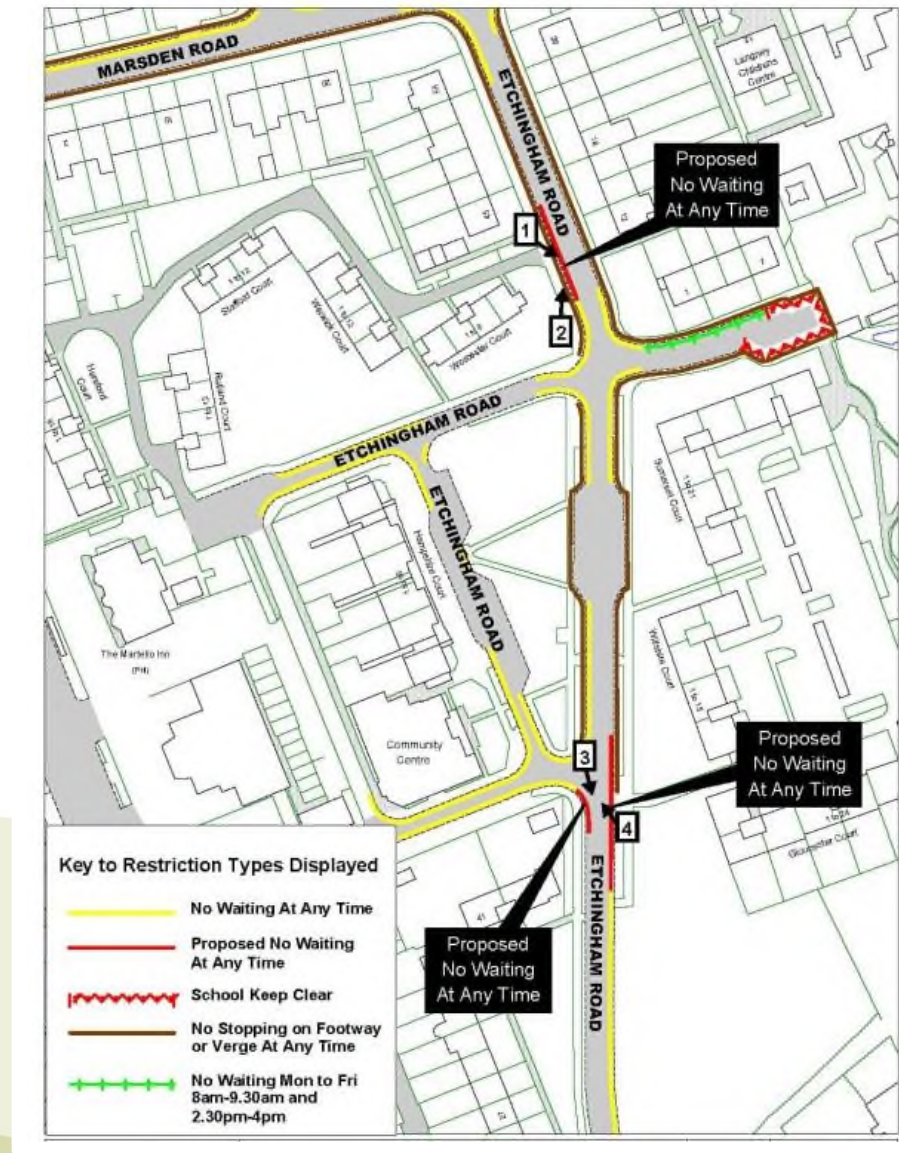




View 3 – Looking south-westwards across the junction of Admiralty Way and Chatham Green



## Site 8 – Etchingam Road





View 1 – Looking south-eastwards across Etchingam Road





View 2 – Looking north across Etchingam Road



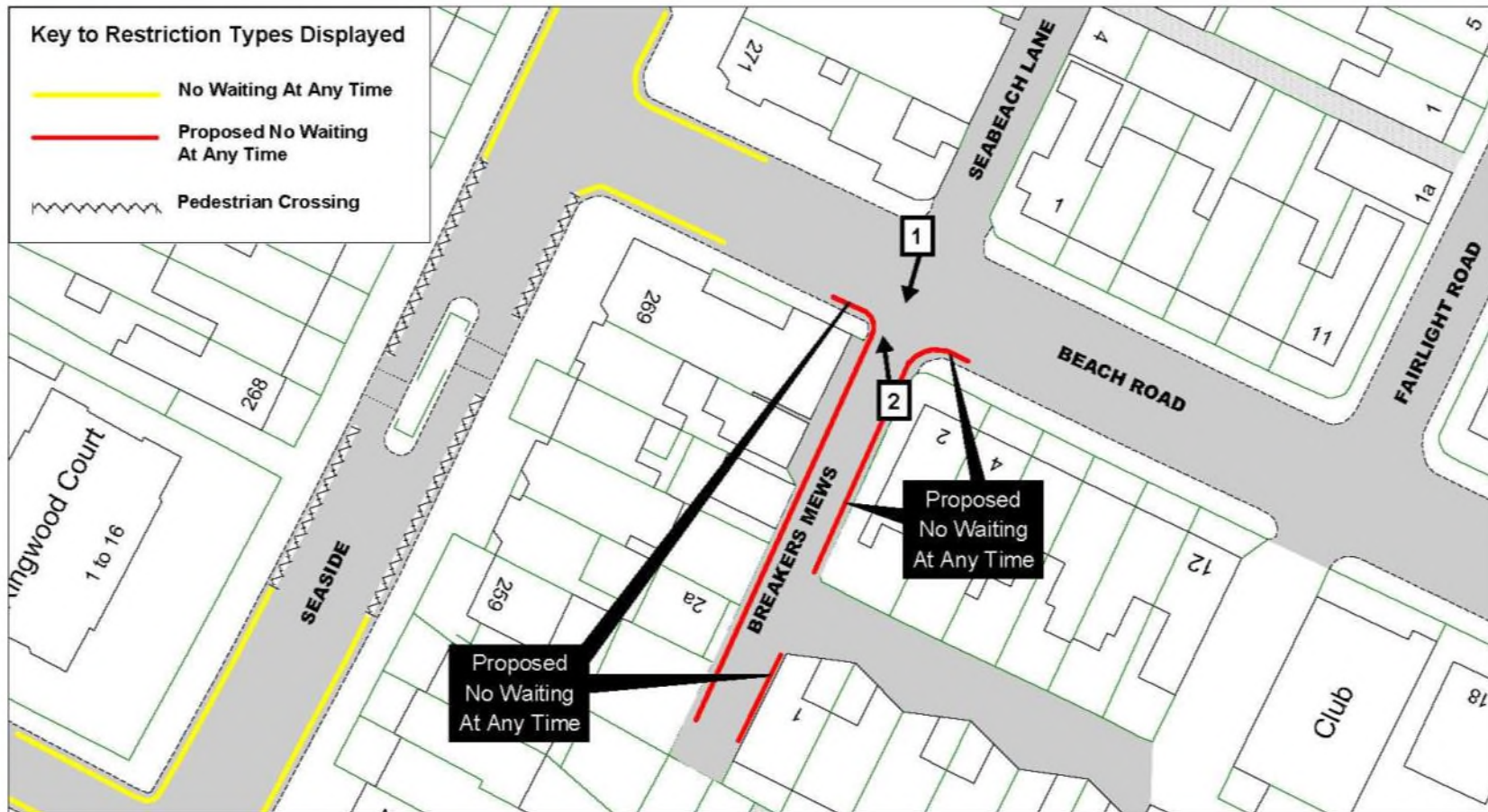
View 3 – Looking south-eastwards from the junction of Etchingam Road





View 4 – Looking north-westwards at the junction of Etchingham Road

## Site 9 – Breakers Mews







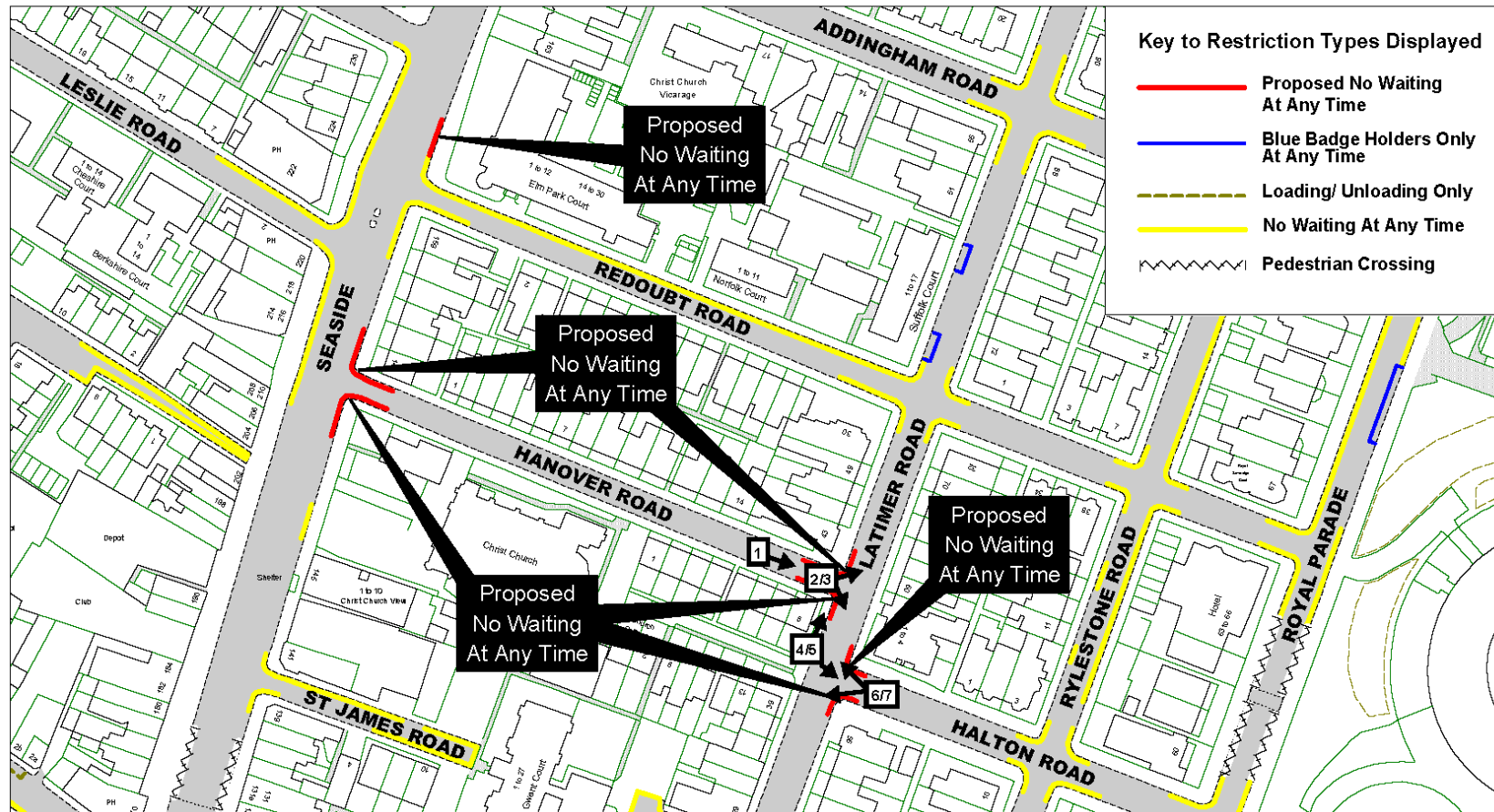
View 1 – Looking south-westwards at Breakers Mews



View 1 – Looking north-westwards at the junction of Breakers Mews and Beach Road



## Site 10 – Halton Road, Laton Road





View 1 – Looking north-eastwards at the junction of Hanover Road and Latimer Road





View 2 – Looking south-eastwards from the junction of Hanover Road and Latimer Road



View 1 – Looking north- eastwards from the junction of Hanover Road and Latimer Road





View 4 – Looking north-eastwards along the pavement in Latimer Road



View 5 – Looking south-eastwards at the junction of Latimer Road and Halton Road





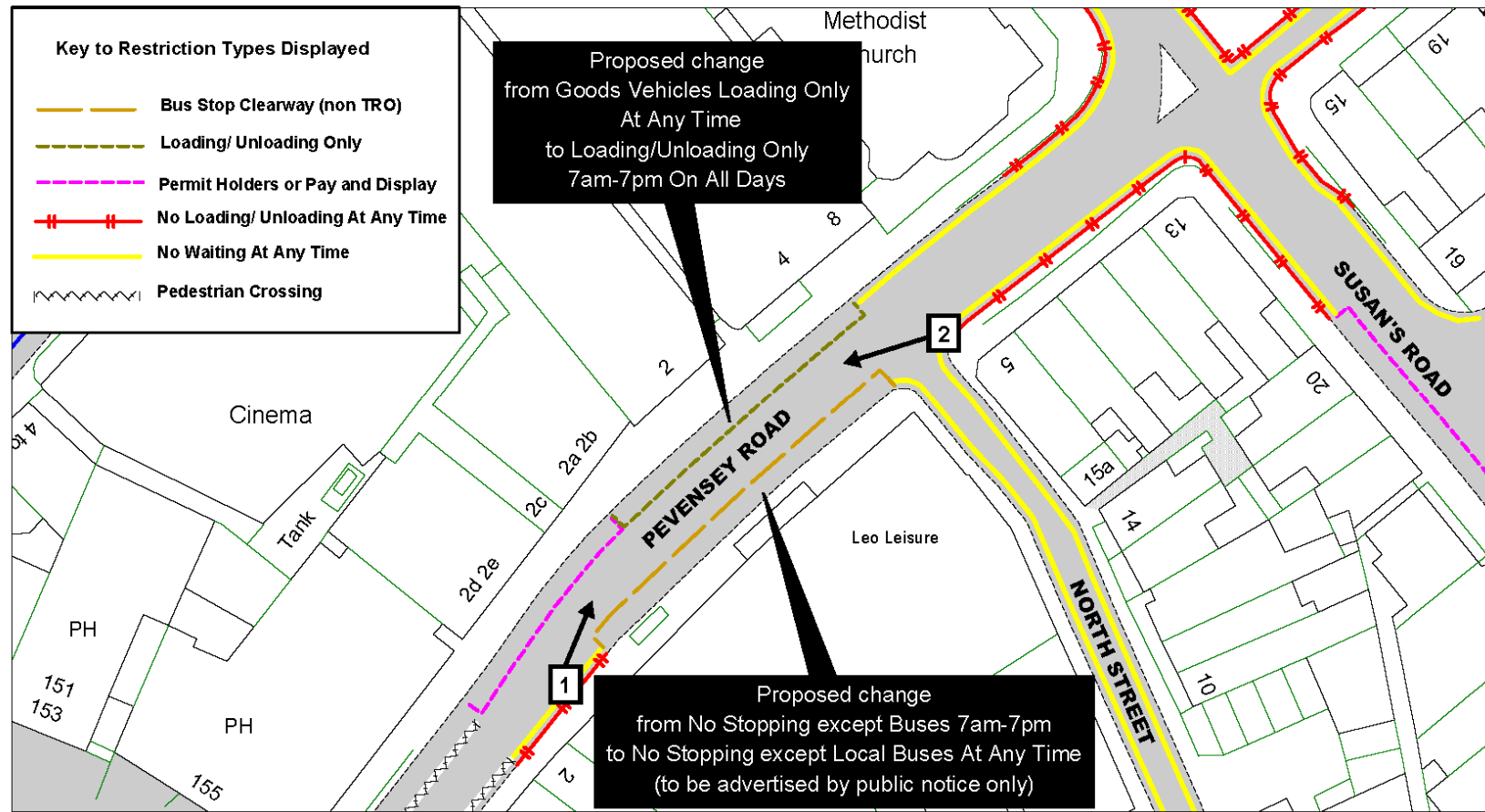
View 6 – Looking north-westwards from the junction of Latimer Road and Halton Road



View 7 – Looking south-westwards from the junction of Latimer Road and Halton Road



## Site 11 – Pevensey Road





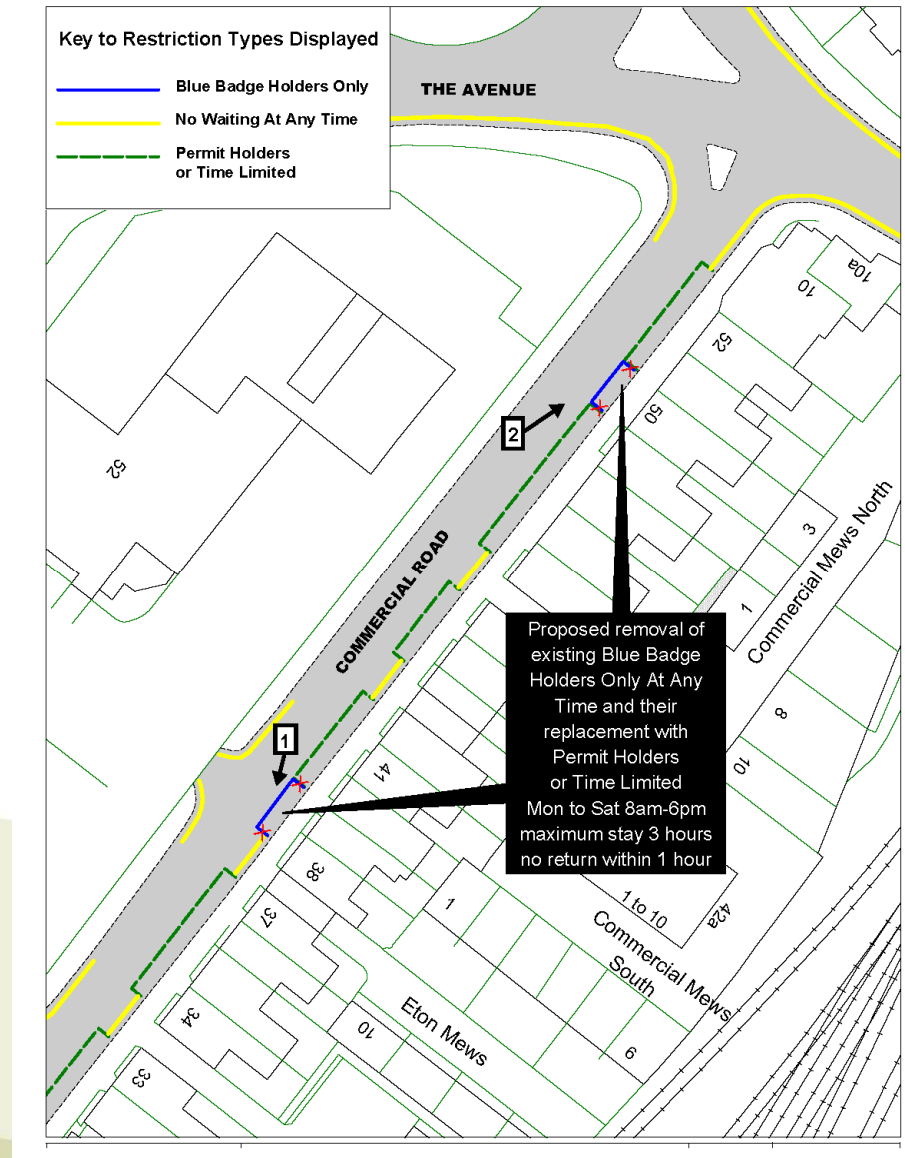
View 1 – Looking north-eastwards along Pevensy Road





View 2 – Looking south-westwards across Pevensey Road

## Site 12 – Commercial Road







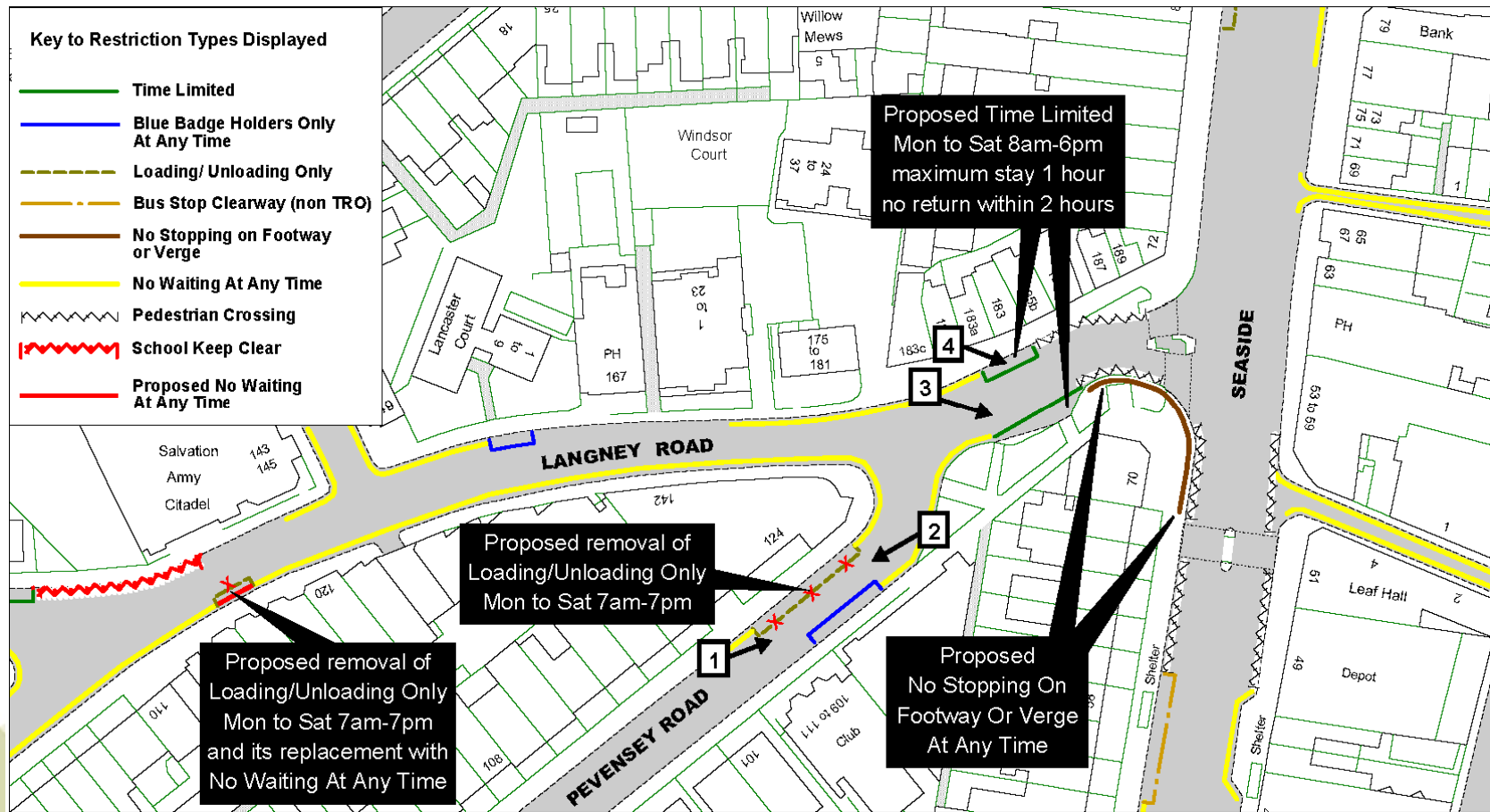
View 1 – Looking south-westwards at No. 39 Commercial Road



View 2 – Looking north-eastwards at No. 50 Commercial Road



## Site 13 – Pevensey Road, Langney Road





View 1 – Looking north-eastwards across Pevensy Road





View 2 – Looking south-westwards at the loading bay in Pevensey Road



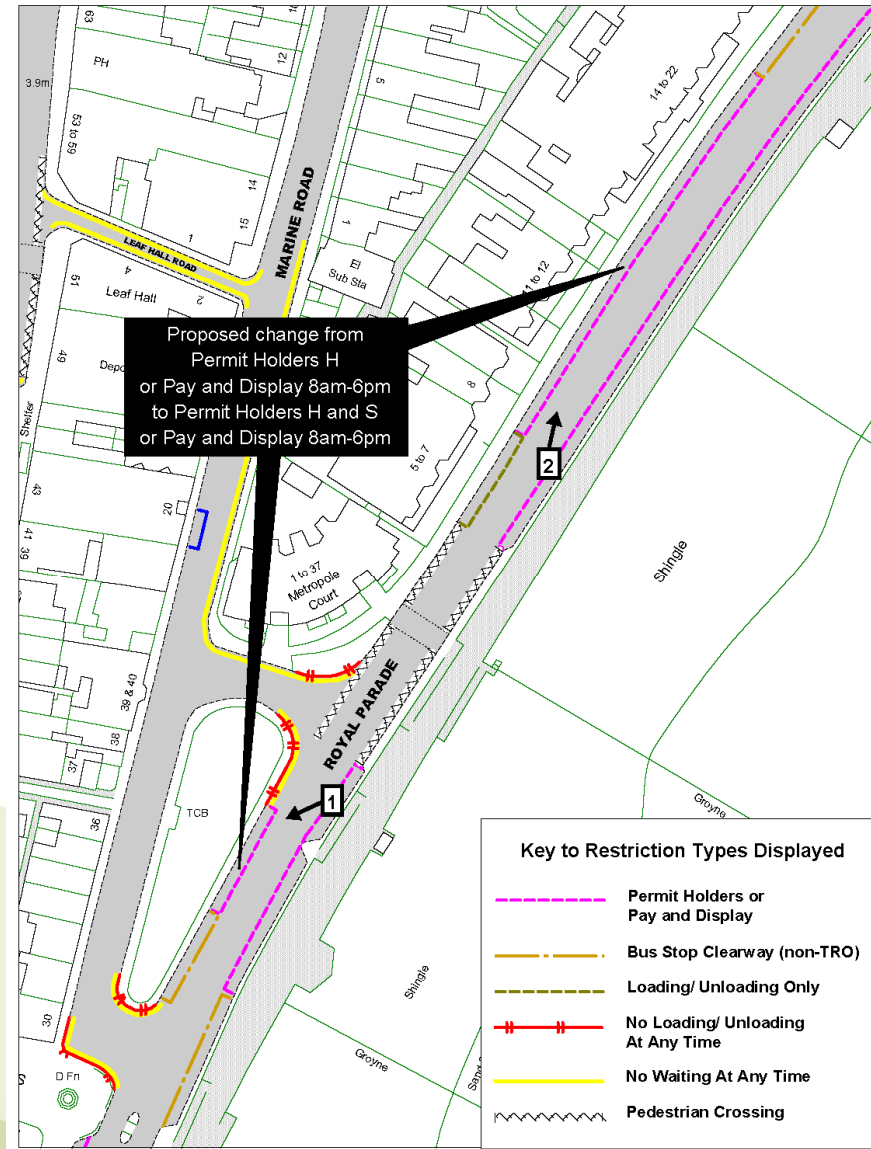
View 3 – Looking south-eastwards across Langney Road





View 4 – Looking south-eastwards in Langney Road

## Site 14 – Royal Parade







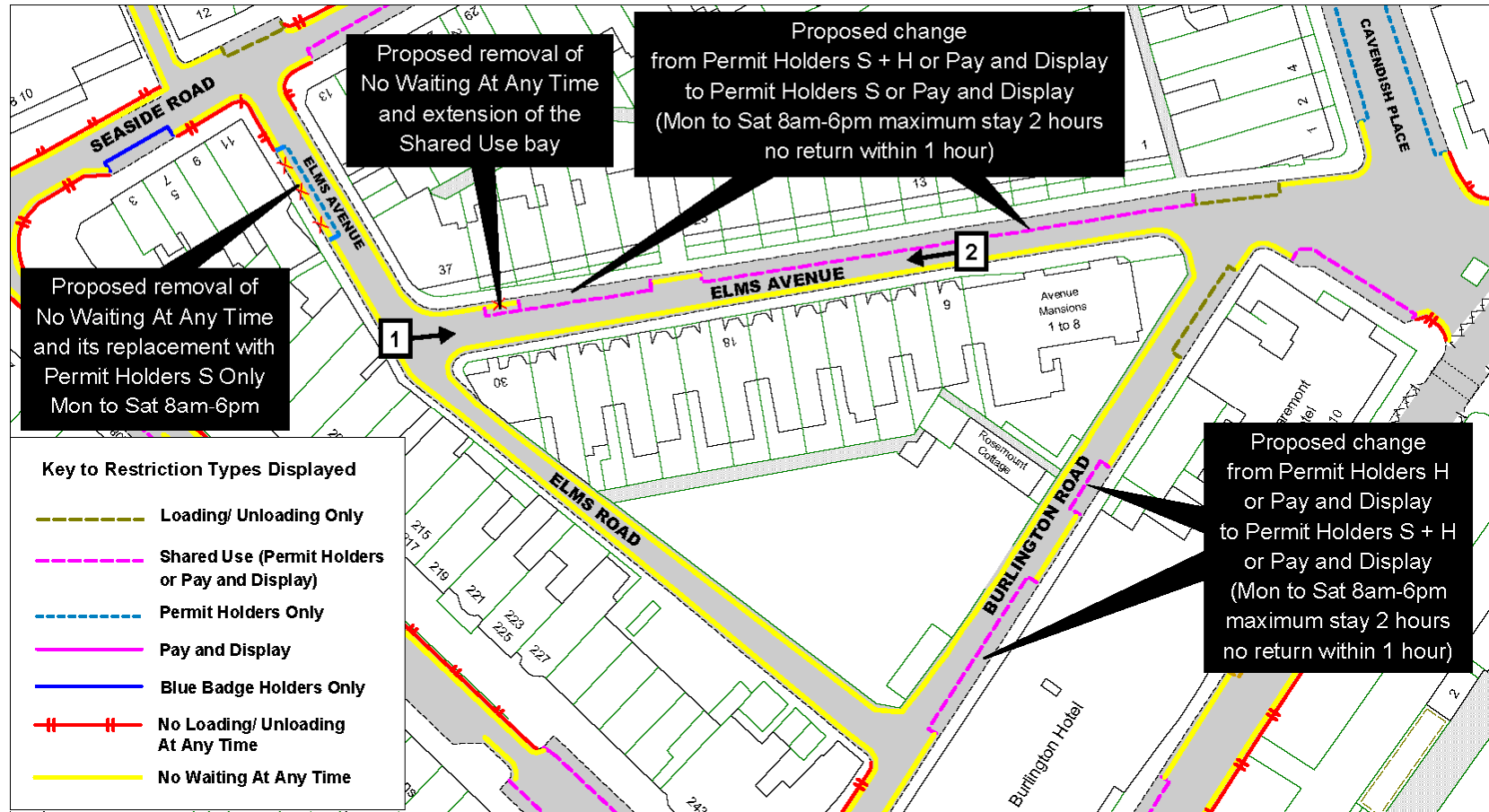
View 1 – Looking south-westwards across Royal Parade



View 2 – Looking north-eastwards across Royal Parade



## Site 15 – Elms Avenue





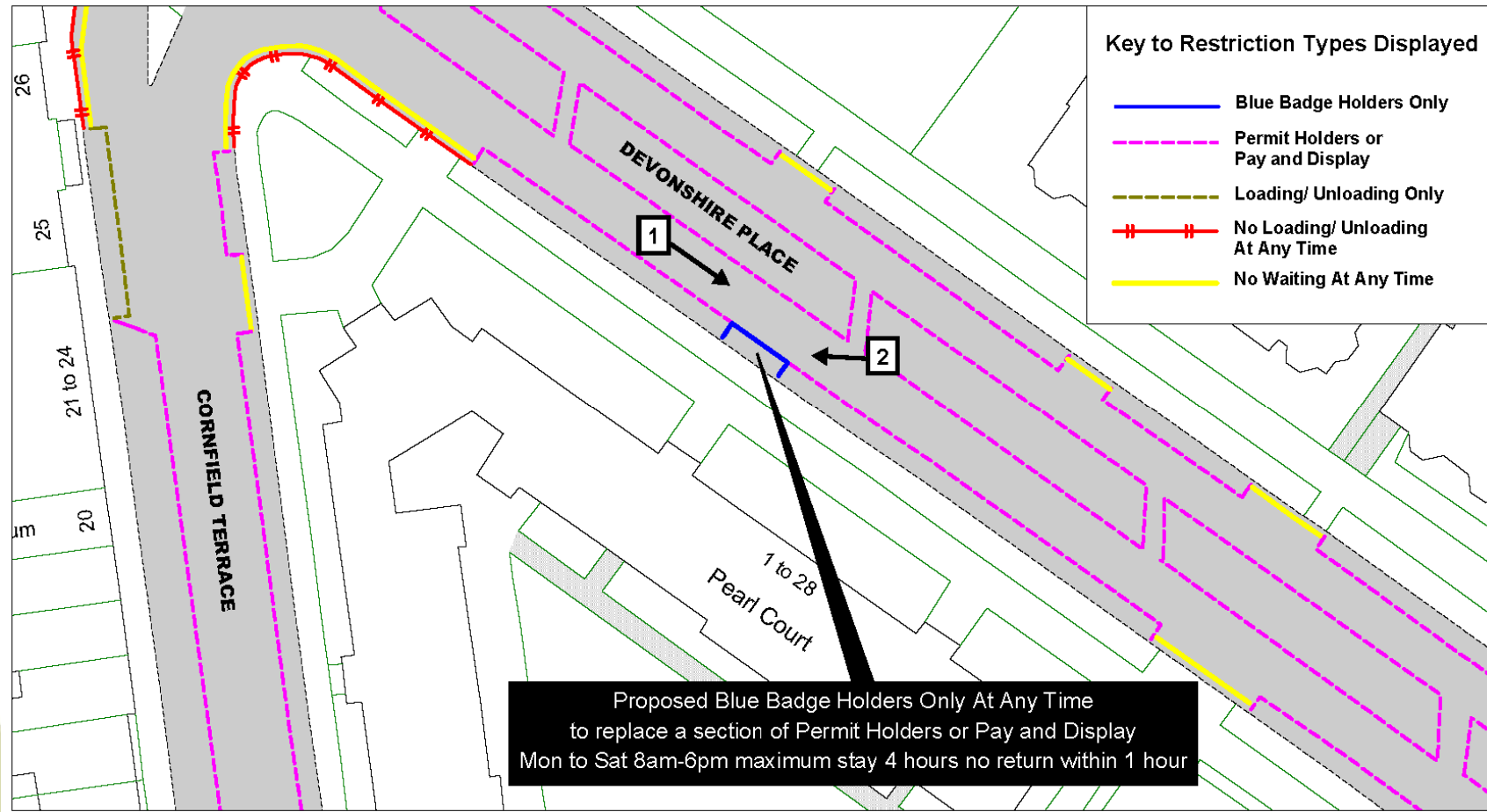
View 1 – Looking eastwards along Elms Avenue





View 2 – Looking westwards across Elms Avenue

## Site 16 – Devonshire Place







View 1 – Looking south-eastwards along Devonshire Place

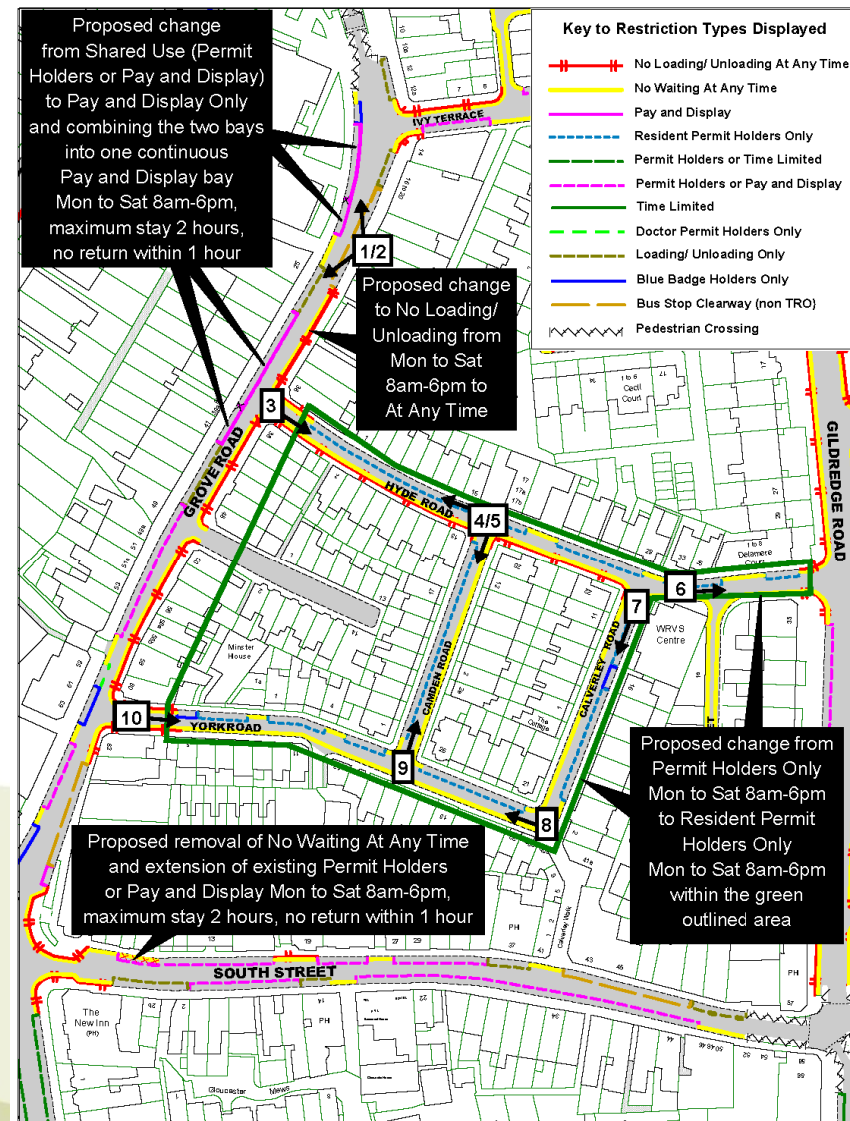




View 2 – Looking westwards across Devonshire Place



## Site 17 – Grove Road, Hyde Road, Camden Road, Calverley Road, York Road





View 1 – Looking north across Grove Road





View 2 – Looking north-westwards across Grove Road



View 3 – Looking south-eastwards along Hyde Road





View 4 – Looking north-westwards along Hyde Road





View 5 – Looking south-westwards across Camden Road





View 6 – Looking eastwards along Hyde Road



View 7 – Looking south-westwards along Calverley Road





View 8 – Looking north-westwards along York Road



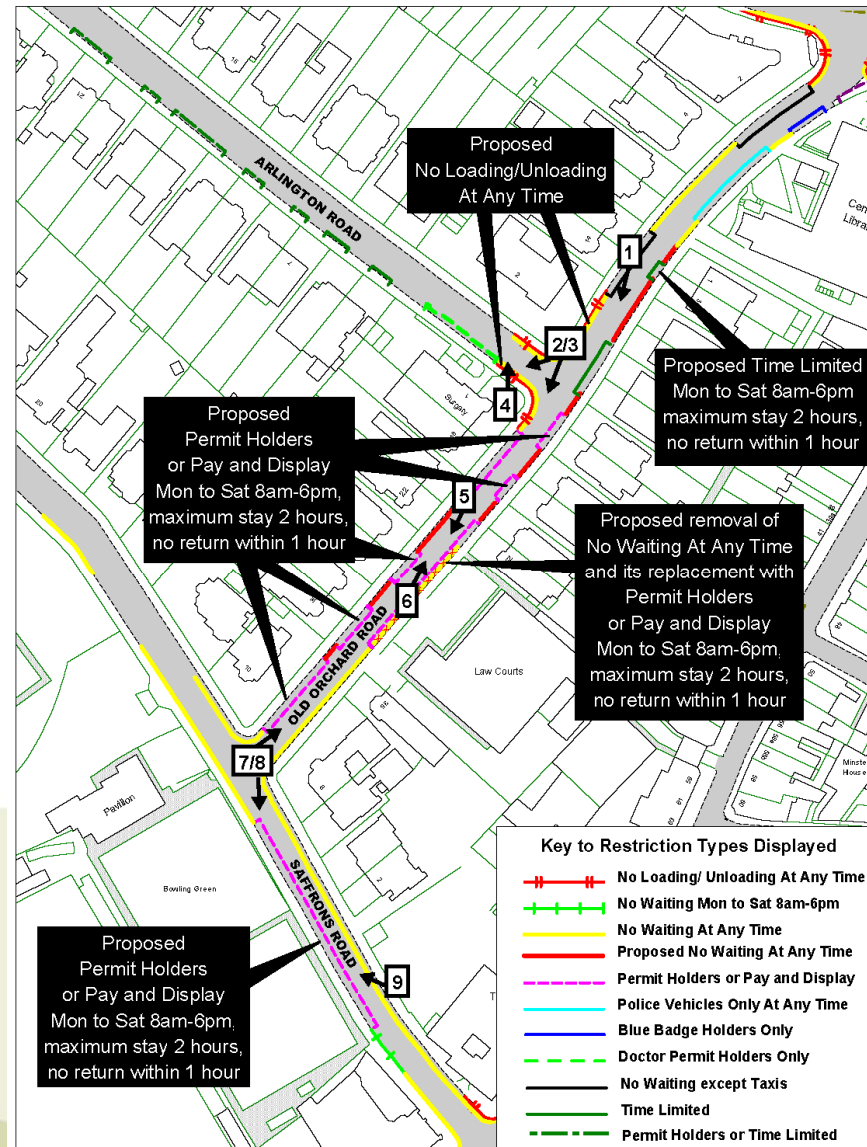
View 1 – Looking north-eastwards along Camden Road





View 10 – Looking eastwards at the junction of Grove Road and York Road

## Site 18 – Arlington Road, Old Orchard Road, Saffron's Road







View 1 – Looking south-westwards across Old Orchard Road





View 1 – Looking south-westwards at the junction of Arlington Road





View 3 – Looking south-westwards at Old Orchard Road from the junction of Arlington Road



View 4 – Looking north across Arlington Road at its junction with Old Orchard Road





View 5 – Looking north-eastwards along Old Orchard Road





View 6 – Looking north-eastwards across Old Orchard Road





View 7 – Looking north-eastwards along Old Orchard Road



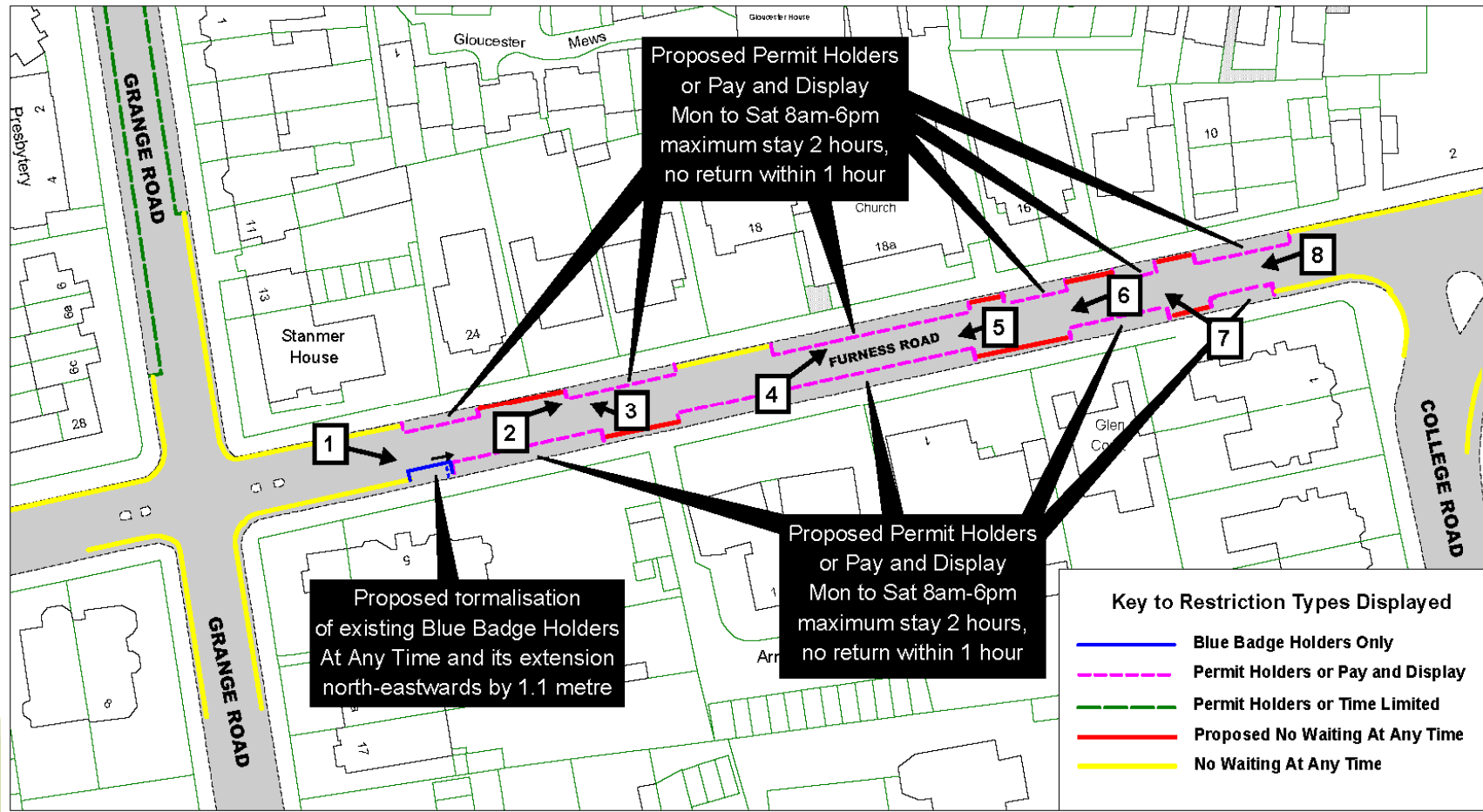
View 8 – Looking south across Saffron's Road





View 9 – Looking north-westwards across Saffron's Road

## Site 19 – Furness Road







View 1 – Looking south-eastwards across Furness Road





View 4 – Looking north-eastwards along Furness Road





View 3 – Looking north-westwards along Furness Road



View 4 – Looking north-eastwards along Furness Road





View 5 – Looking south-westwards along Furness Road





View 6 – Looking south-westwards along Furness Road





View 7 – Looking north-westwards across Furness Road

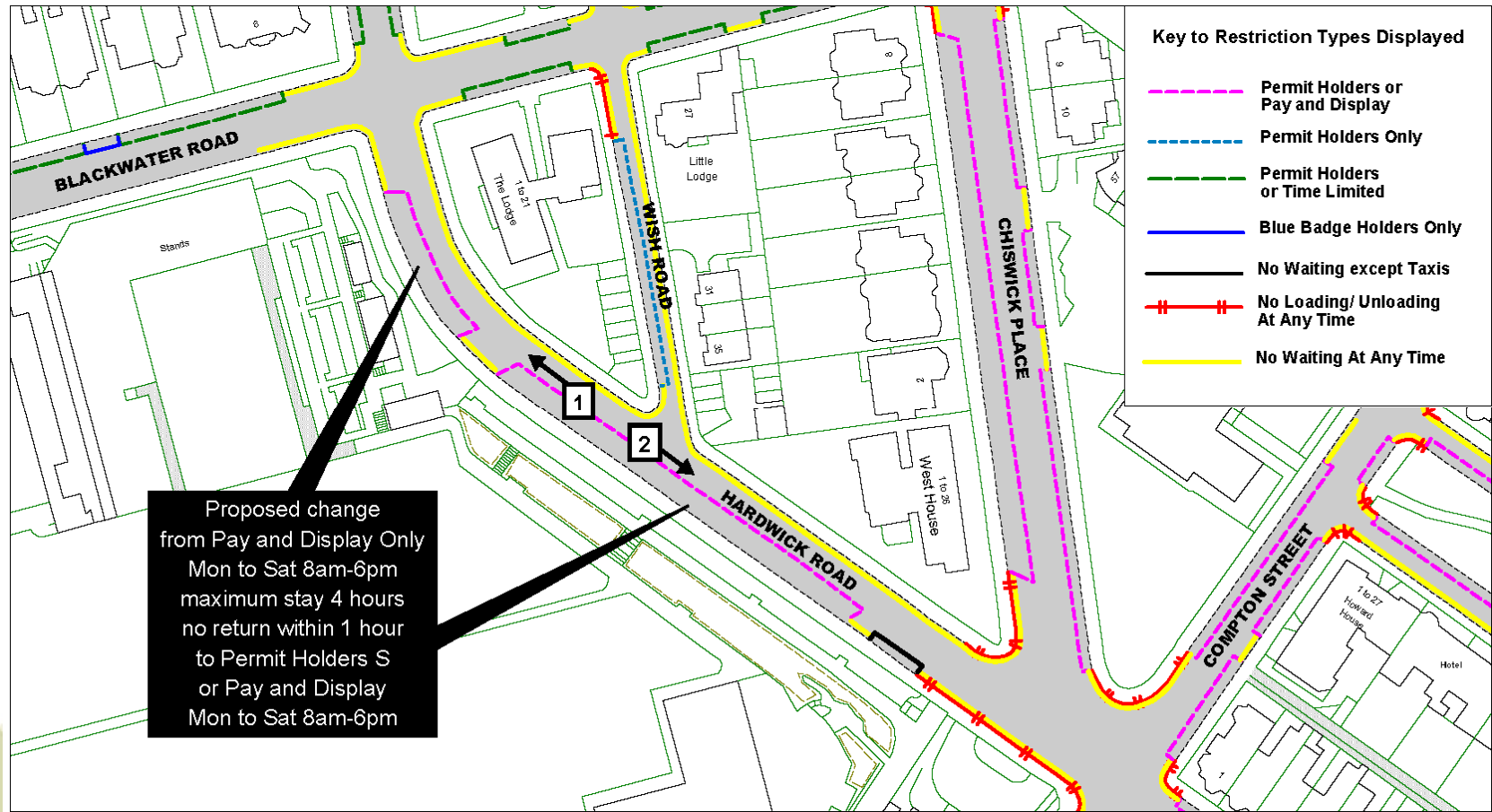




View 8 – Looking south-westwards along Furness Road



## Site 20 – Hardwick Road





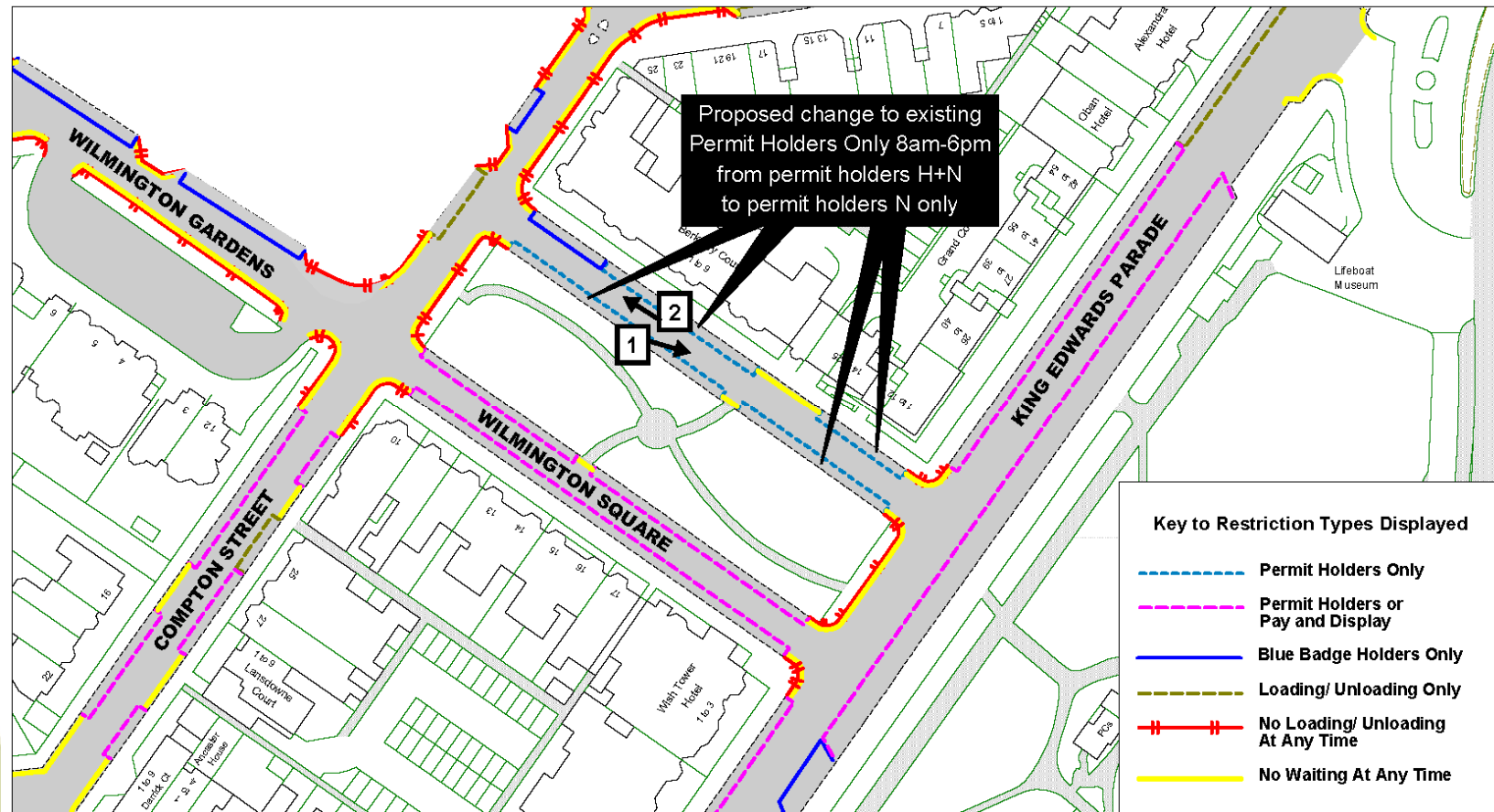
View 1 – Looking north-westwards along Hardwick Road





View 2– Looking south-eastwards along Hardwick Road

## Site 21 – Wilmington Square







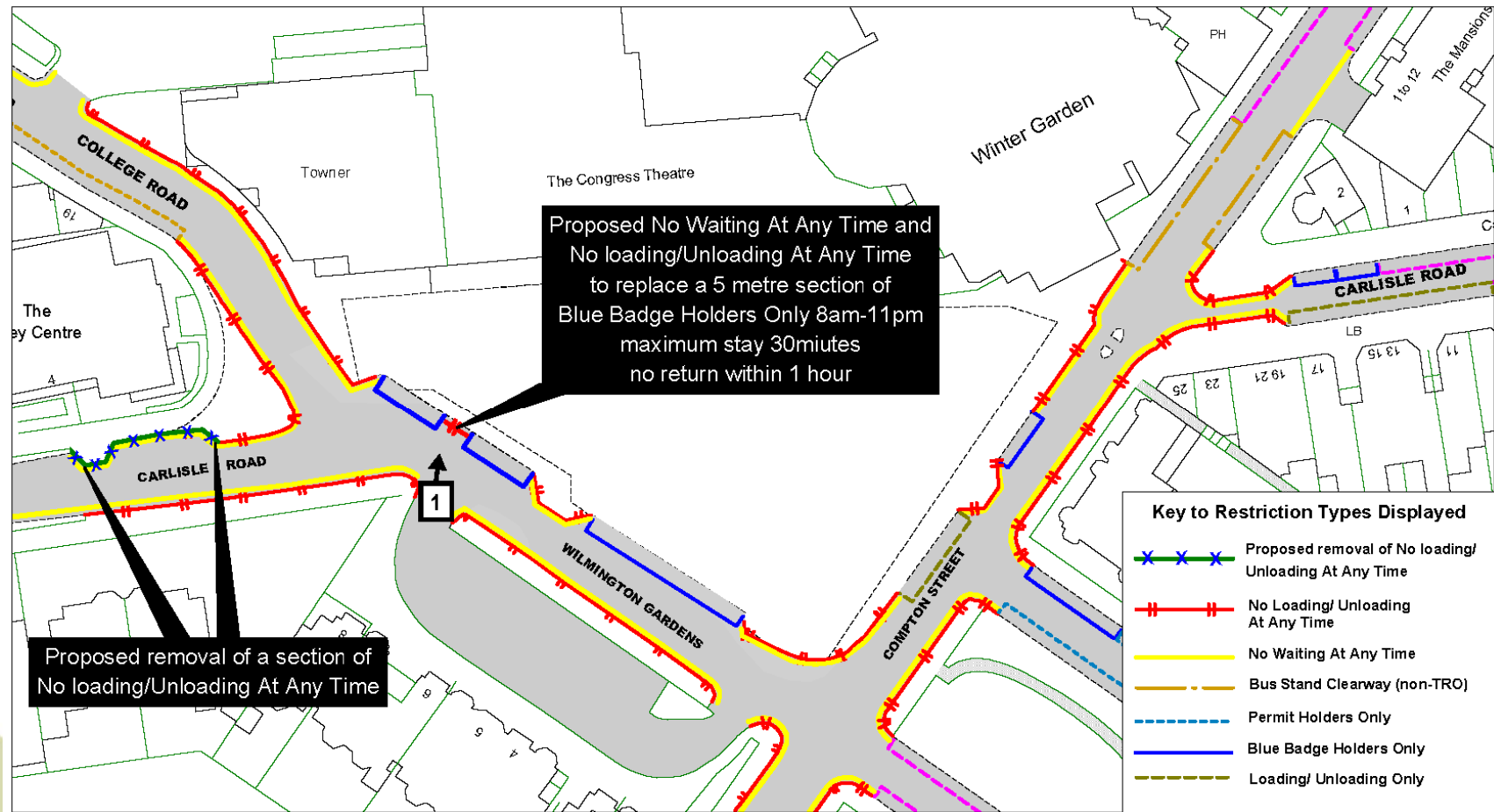
View 1 – Looking south-eastwards along Wilmingtton Square



View 2 – Looking north-westwards along Wilmington Square



## Site 22 – Wilmington Gardens





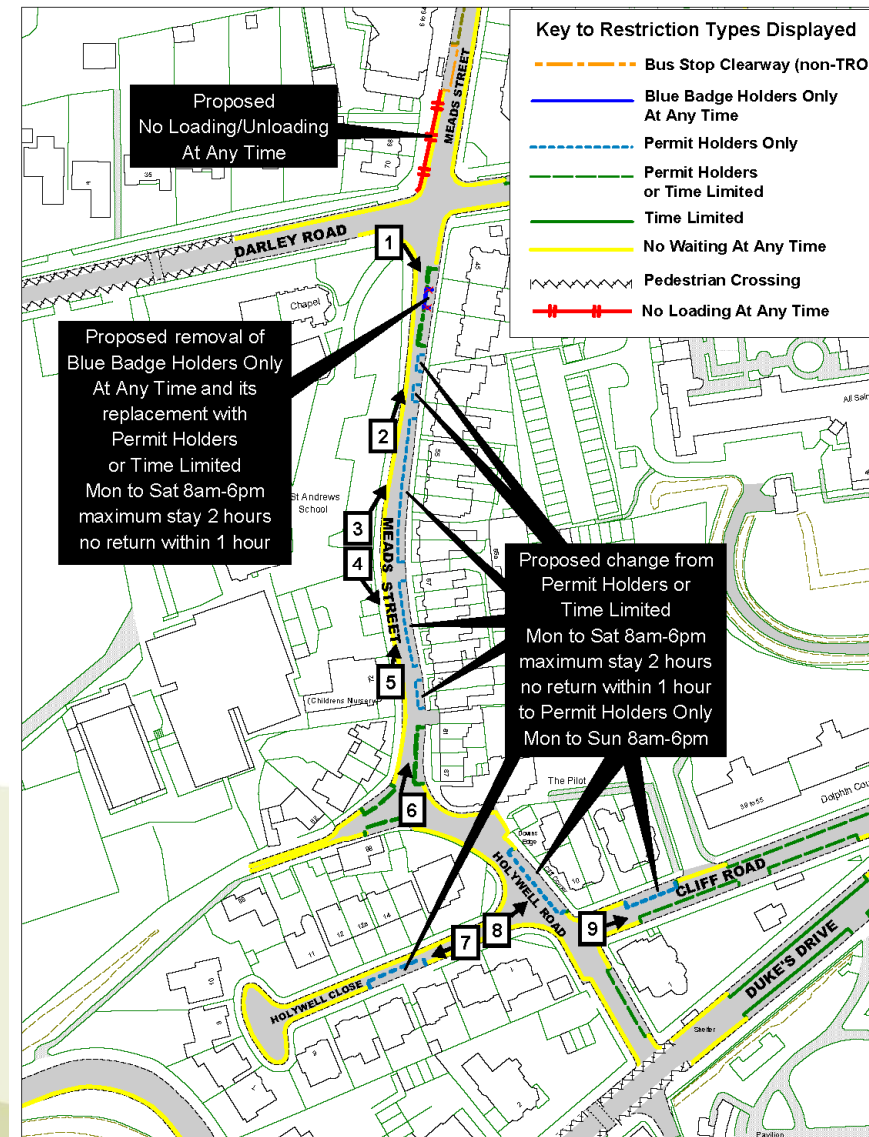
View 1 – Looking north across Wilmington Gardens





View 1 – The Emergency Access outside The Congress Theatre in Wilmington Gardens

## Site 23 – Meads Street, Holywell Road, Holywell Close, Cliff Road







View 1 – Looking south-eastwards across Meads Street



View 2 – Looking north-eastwards along Meads Street





View 3 – Looking north-eastwards along Meads Street



View 4 – Looking south-eastwards along Meads Street





View 5 – Looking north-eastwards along Meads Street



View 6 – Looking north-eastwards along Meads Street





View 7 – Looking south-westwards along Holywell Close



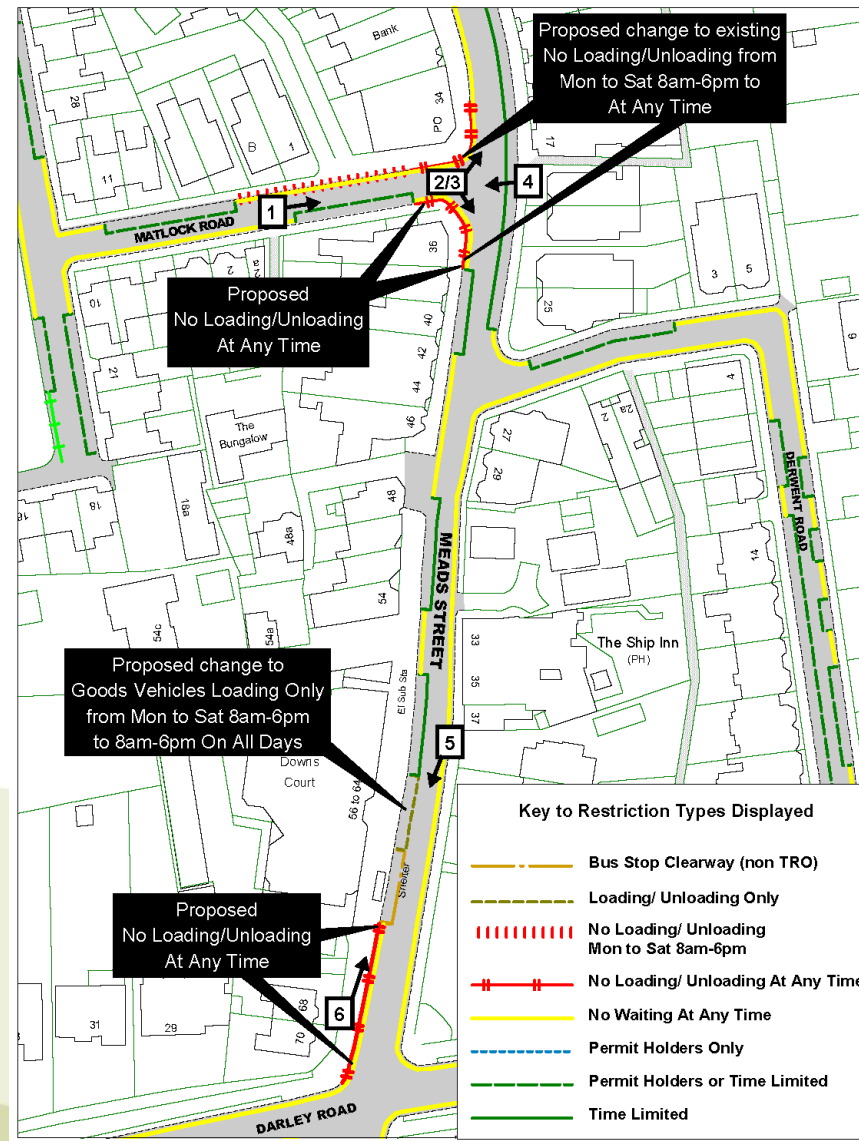
View 8 – Looking north-eastwards at the junction of Holywell Close and Holywell Road





View 9 – Looking north-eastwards along Cliff Road

## Site 24 – Matlock Road, Meads Street







View 1 – Looking eastwards along Matlock Road



View 2 – Looking south-eastwards from the junction of Matlock Road and Meads Street





View 3 – Looking north-eastwards from the junction of Matlock Road and Meads Street



View 4 – Looking westwards at the junction of Meads Street and Matlock Road





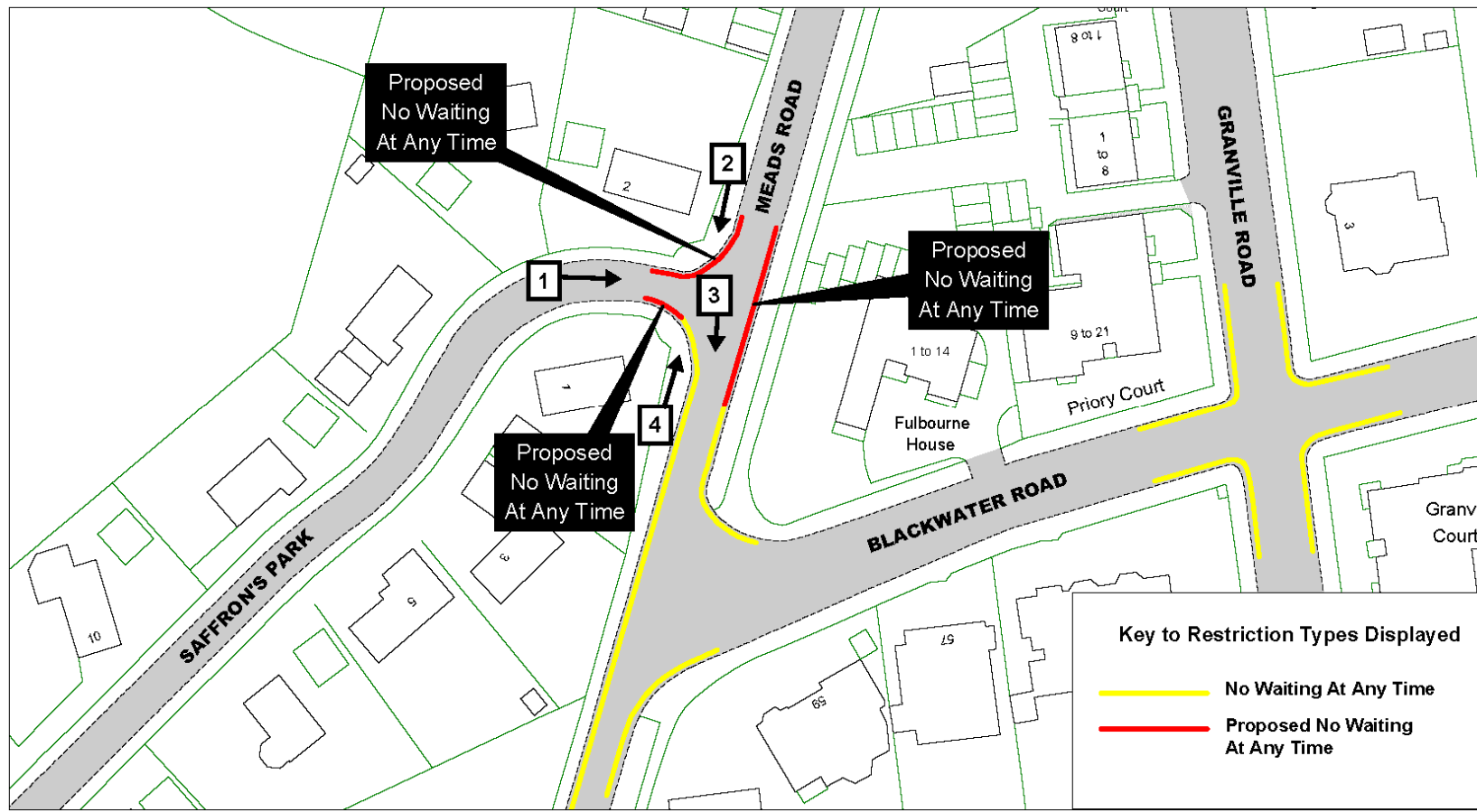
View 5 – Looking south-westwards at the loading bay in Meads Street



View 6 – Looking north-eastwards along the pavement in Meads Street



## Site 25 –Meads Road, Saffron's Park





View 1 – Looking eastwards at the junction of Meads Road and Saffron's Park





View 2 – Looking south-westwards along Meads Road





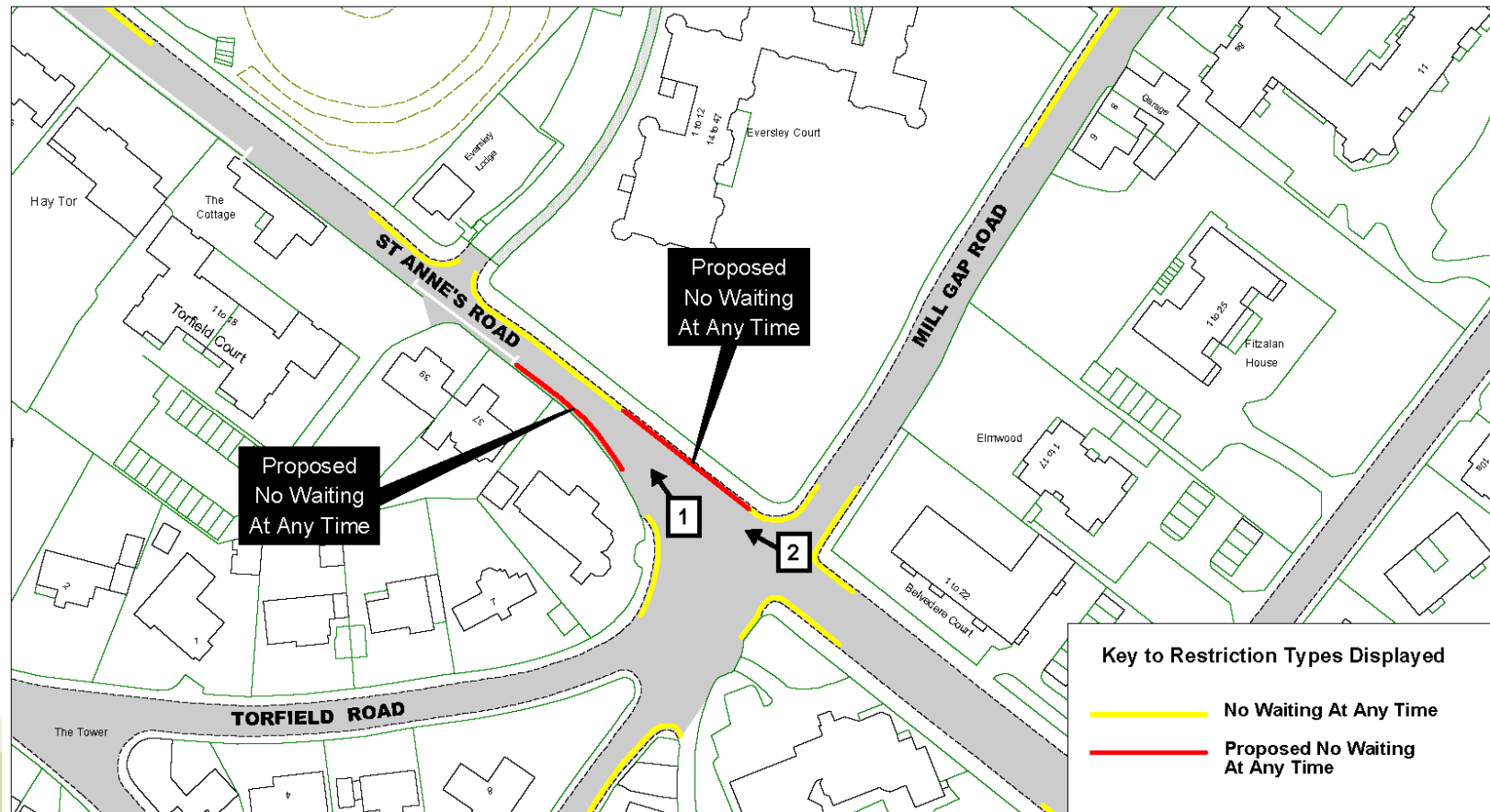
View 3 – Looking south from the junction of Meads Road and Saffron's Park





View 4 – Looking north-eastwards along Meads Road

## Site 26 – St Anne's Road







View 1 – Looking north-westwards from the junction of St Anne's Road and Torfield Road

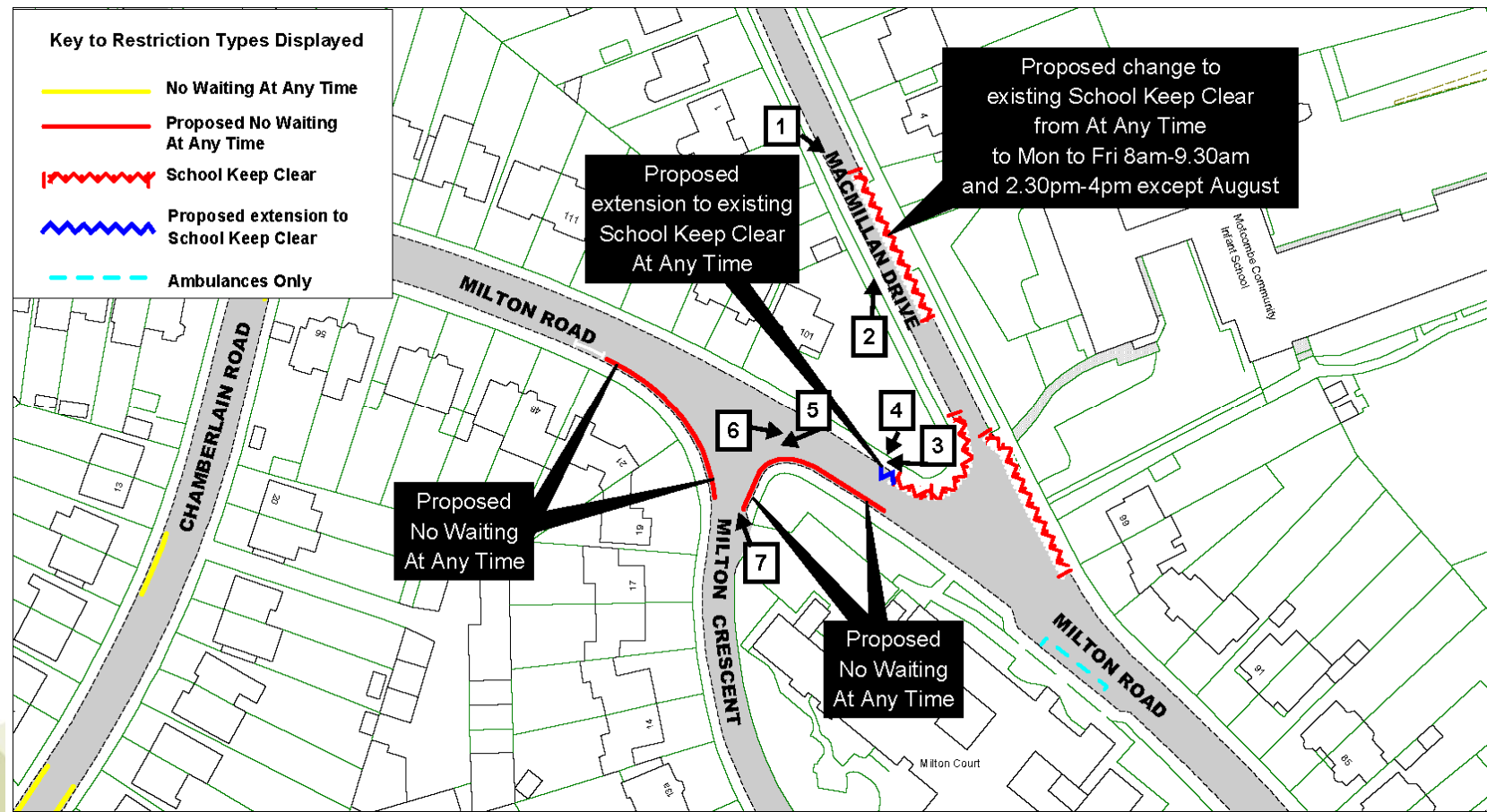




View 2 – Looking north-westwards from the junction of Mill Gap Road and St Anne's Road



## Site 27 – MacMillan Drive, Milton Crescent, Milton Road





View 1 – Looking south-eastwards along MacMillan Drive





View 2 – Looking north along MacMillan Drive



View 3 – Looking westwards along Milton Road





View 1 – Looking south at the crossing points in Milton Road



View 5 – Looking south-westwards across Milton Road





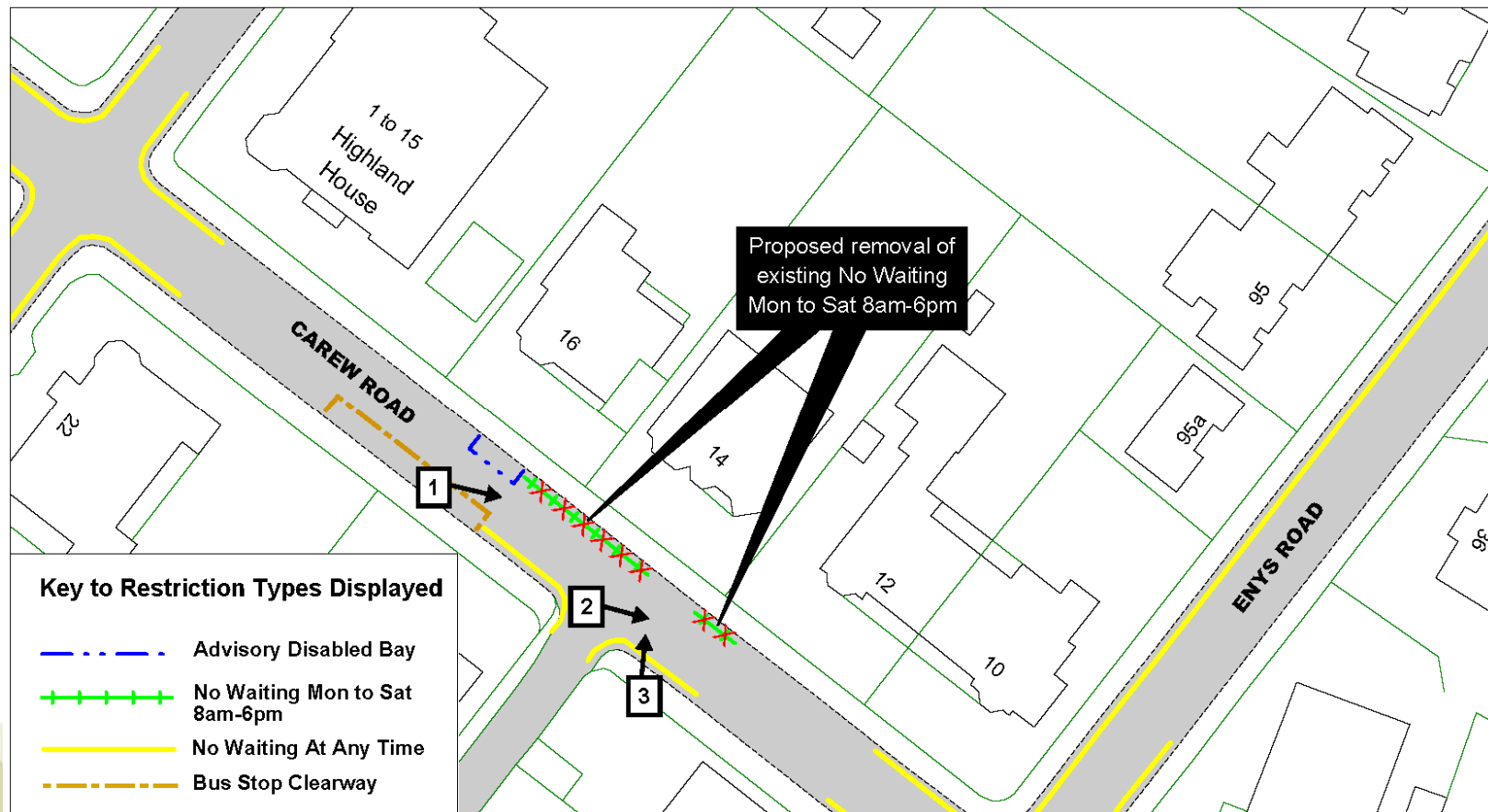
View 6 – Looking eastwards along Milton Road



View 7 – Looking at the junction of Milton Crescent and Milton Road



## Site 28 – Carew Road





View 1 – Looking south-eastwards along Carew Road





View 2 – Looking south-eastwards across Carew Road





View 3 – Looking north across Carew Road



# **Traffic Regulation Order: Eastbourne Parking Review 2019**

Objections received to changes to parking and waiting restrictions proposed during the latest parking review in Eastbourne Borough.