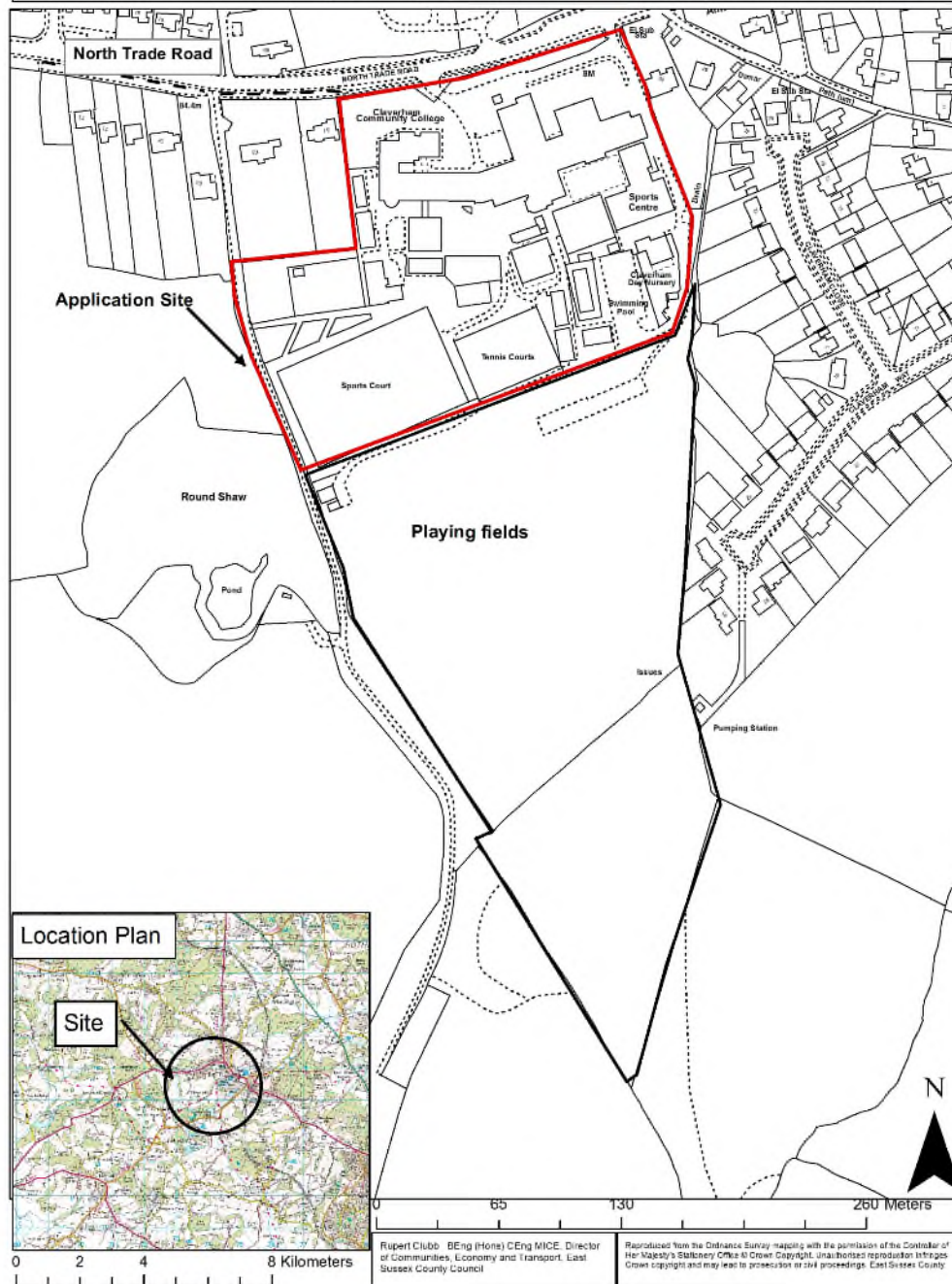


RR/3420/CC

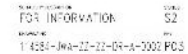
The demolition of Block EFAA (the main school building) and Block EFAD and the construction of a replacement main school building as well as temporary accommodation blocks to be used during the construction period.

Claverham Community College, North Trade Road, Battle
TN33 0HT

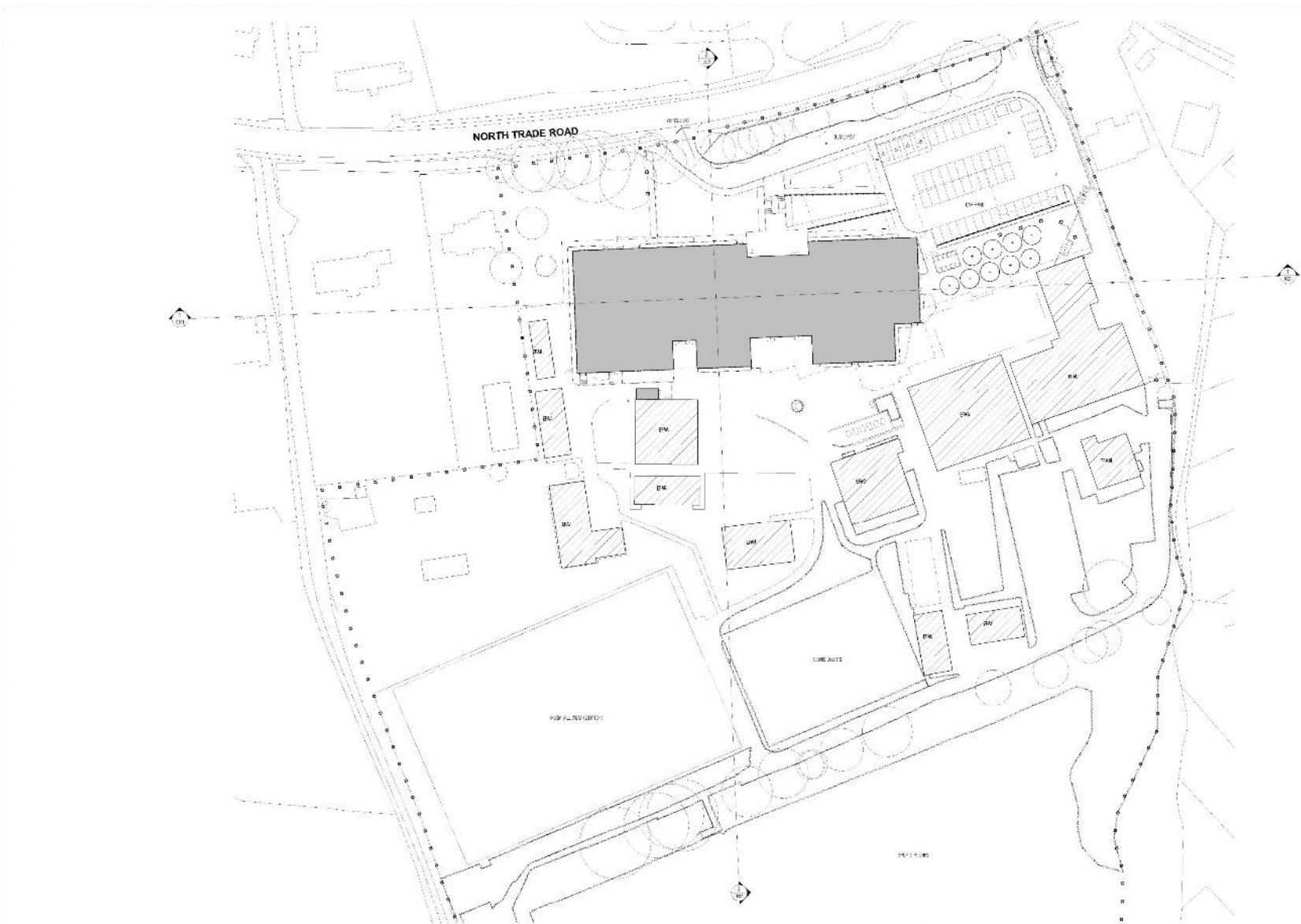
RR/3420/CC
Claverham Community College, North Trade Road, Battle TN33 0HT





[illegible]

jestico | whites
Sutton Yard, 65 Goswell Road
London, EC1V 7EN
+44 (0) 20 7380 038
jesticowhites.com
architecture + interior design
london + prague



PLANNING APPLICATION BOUNDARY
 PROPOSED BUILDING
 EXISTING BUILDINGS
 OUTLINE OF EXISTING BUILDINGS
 REFER TO LANDSCAPE ARCHITECT'S DRAWINGS
 FOR BUILDING LEVELS AND FLOOR LEVELS

SITE PLAN
 PROPOSED SITE PLAN
 FOR INFORMATION
 1:4884-JWA-22-22-04-A-01-01 PC4

OWNER: KIRKLAND
 CLAYTON & KIRKLAND
 COMMUNITY COLLEGE
 1:4884-JWA-22-22-04-A-01-01 PC4

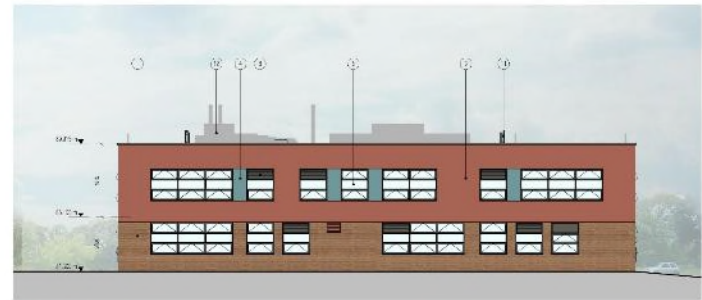
jestico | whites
 Sutton Yard, 65 Goswell Road
 London EC1V 7EN
 +44 (0) 20 7380 038
 jesticowhites.com
 architecture + interior design
 london + prague



1 NORTH ELEVATION
1:10



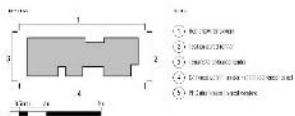
2 EAST ELEVATION
1:10



3 WEST ELEVATION
1:10



4 SOUTH ELEVATION
1:10



- 1. Red brickwork
- 2. Teal brickwork
- 3. Red brickwork
- 4. Teal brickwork
- 5. Red brickwork
- 6. Teal brickwork
- 7. Red brickwork
- 8. Teal brickwork
- 9. Red brickwork
- 10. Teal brickwork
- 11. Red brickwork
- 12. Teal brickwork
- 13. Red brickwork
- 14. Teal brickwork
- 15. Red brickwork
- 16. Teal brickwork
- 17. Red brickwork
- 18. Teal brickwork
- 19. Red brickwork
- 20. Teal brickwork

NO.	DESCRIPTION	QTY	UNIT	PRICE
1	Red brickwork	100	m ²	100
2	Teal brickwork	100	m ²	100
3	Red brickwork	100	m ²	100
4	Teal brickwork	100	m ²	100
5	Red brickwork	100	m ²	100
6	Teal brickwork	100	m ²	100
7	Red brickwork	100	m ²	100
8	Teal brickwork	100	m ²	100
9	Red brickwork	100	m ²	100
10	Teal brickwork	100	m ²	100
11	Red brickwork	100	m ²	100
12	Teal brickwork	100	m ²	100
13	Red brickwork	100	m ²	100
14	Teal brickwork	100	m ²	100
15	Red brickwork	100	m ²	100
16	Teal brickwork	100	m ²	100
17	Red brickwork	100	m ²	100
18	Teal brickwork	100	m ²	100
19	Red brickwork	100	m ²	100
20	Teal brickwork	100	m ²	100

FOR INFORMATION
1:1000
1:1000

ENLARGED ELEVATIONS
S2
S2

jestico | whites
Sutton Yard, 65 Goswell Road
London, EC1V 7EN
+44 (0) 20 7380 038
jesticowhites.com
architecture + interior design
london + prague



Document Number

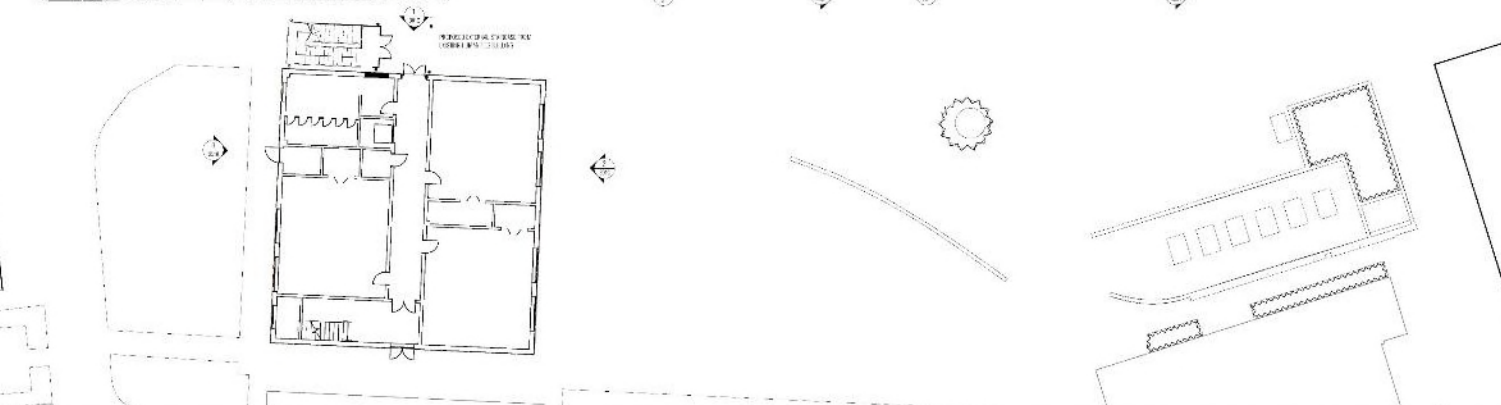
114584 JWA ZZ ZZ PP A 2001 P04

Notes

These samples are not represented in proportion for size and quantity. Please view in conjunction with Section 4.6 of the Design and Access Statement document page 280 for the relationships between materials.

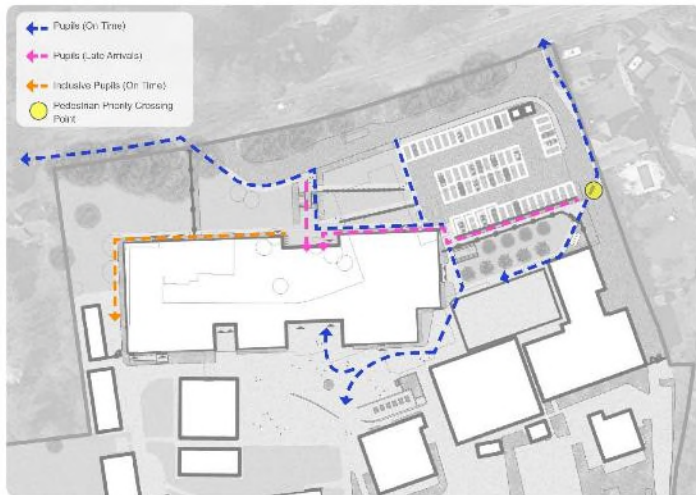
Samples

1. Render facade | Terracotta with 1.5mm grain texture
2. Render facade | Teal with 1.5mm grain texture
3. Metal frames, lifts and coatings covered in polycarbonate
4. Brickwork | Chaffey red brick with buff mortar

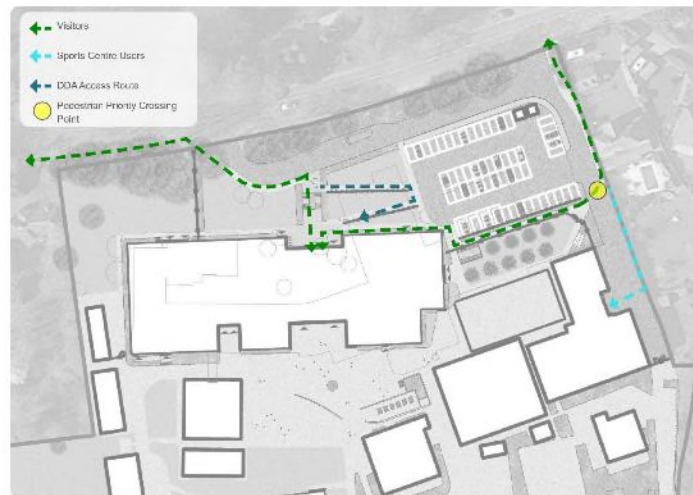


jestico | whites
 Sutton Yard, 65 Goswell Road
 London EC1V 7EN
 +44 (0) 20 7380 038
jesticowhites.com
 architecture + interior design
 london + prague

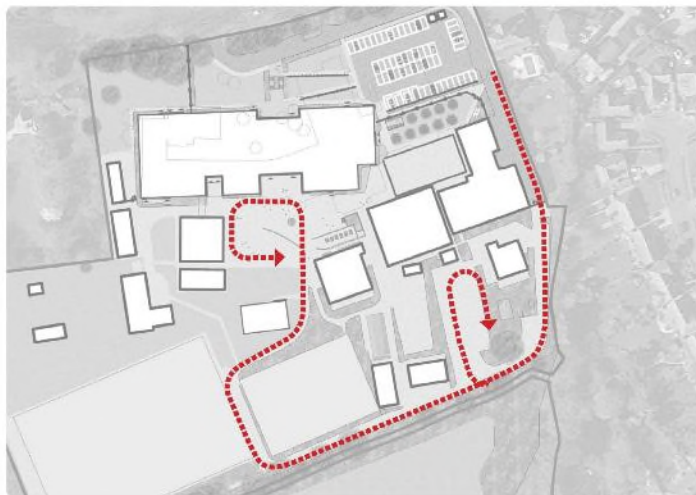




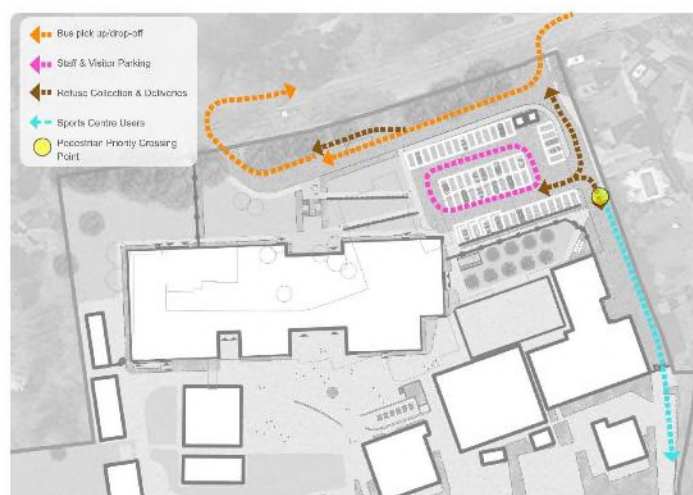
Pedestrian Circulation (Pupils Only)



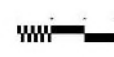
Pedestrian Circulation



Fire Tender Access



Vehicular Circulation



KEY

REVISIONS

REV.	DATE	DESCRIPTION	BY	CHKD BY
001	10/10/18	Initial Design	DC	DC
002	10/10/18	Final Design	DC	DC
003	10/10/18	Final Design	DC	DC
004	10/10/18	Final Design	DC	DC

REVISIONS

REVISIONS

REVISIONS

REVISIONS

REVISIONS

REVISIONS

REVISIONS

REVISIONS

REVISIONS

REVISIONS

REVISIONS

REVISIONS

REVISIONS

REVISIONS

REVISIONS

REVISIONS

REVISIONS

REVISIONS

REVISIONS

REVISIONS

REVISIONS

REVISIONS

REVISIONS

REVISIONS

REVISIONS

REVISIONS

REVISIONS

REVISIONS

REVISIONS

REVISIONS

REVISIONS

REVISIONS

REVISIONS

REVISIONS

REVISIONS

REVISIONS

REVISIONS

REVISIONS

REVISIONS

REVISIONS

REVISIONS

REVISIONS

REVISIONS

REVISIONS

REVISIONS

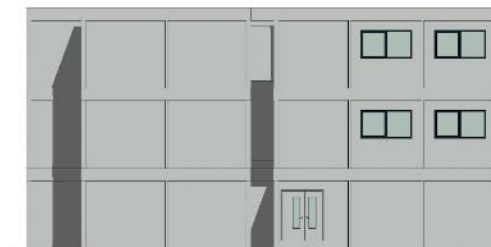
REVISIONS

REVISIONS

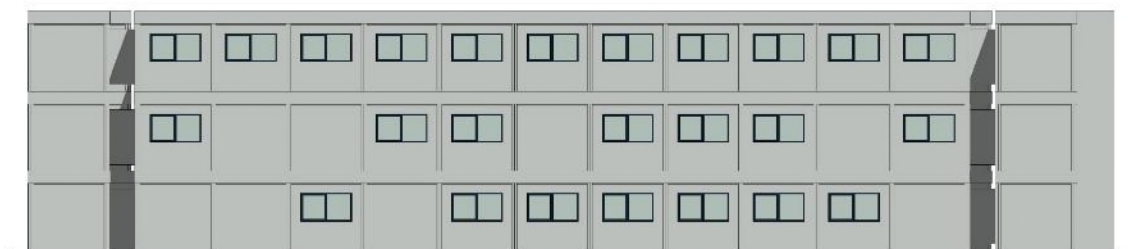
REVISIONS



1 : 100



1 : 100



1 : 100



1 : 100



Please note that this *in vitro* assay with cow eggs is for illustrative purposes only and is not a test, the full assay should only come from the actual finished product in use.

The position of windows, external doors and closed fire links, if shown, are dependent on smoke backflow and type of cover.

[illegible]

Layoff Ultima Correlax

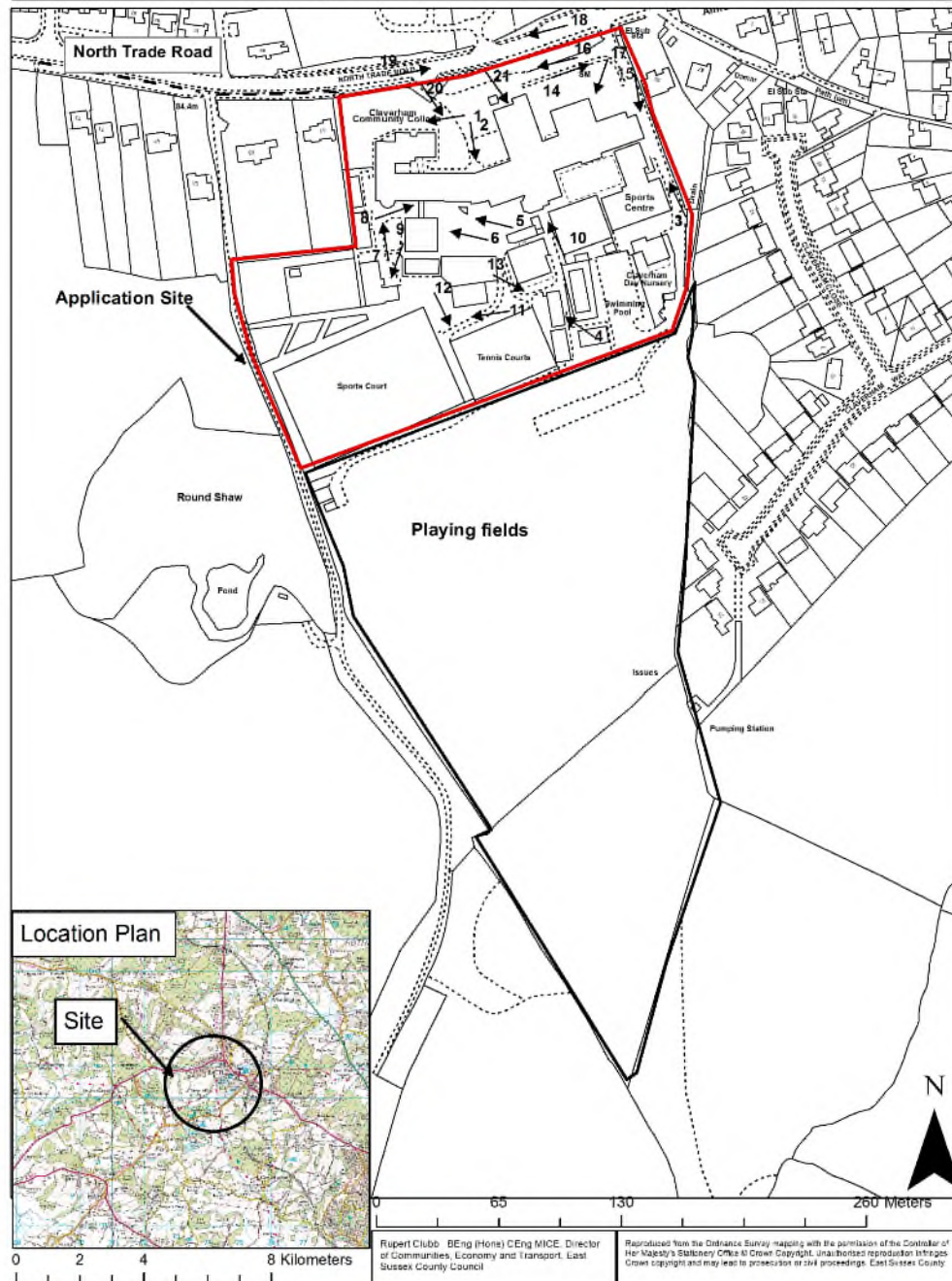
Date	Scale	
25.02.2019	1 : 100 @ A1	
Drawing Number	Rev.	Drawn by
H131085509	1	HME



1503	00	28153015
41	00	00000000
41	00	00000000

114584-ALA-ZZ-XX-DR-L-0016 P02

RR/3420/CC
Claverham Community College, North Trade Road, Battle TN33 0HT



1. North-western part of site



2. Main entrance to school



3. View north along internal eastern access road with Battle Sports Centre on left



4. Classroom block EFAD to be removed in centre with former swimming pool site on right



5. Open space to rear (south) of main building (EFAA)



6. South-western annex of EFAA to be retained



7. Western end of EFAA



8. Western side of EFAA showing link to annex



9. Looking south-west at western side of site



10. View looking north at rear of EFAA



11. View at southern part of site looking west towards the MUGA



12. Western part of tennis courts looking south



13. Eastern part of tennis courts looking south-east



14. The school's eastern access from North Trade Road



15. View south along internal eastern access road



16. View west along informal one-way system running parallel with North Trade Road



17. View south-west across car park and EFAA



18. View west along North Trade Road with school's eastern access on left



19. View east along North Trade Road from school's western access



20. View of school from western access



21. View of car park and eastern side of EFAA looking south-east



East Sussex County Council Planning Committee 14 October 2020