

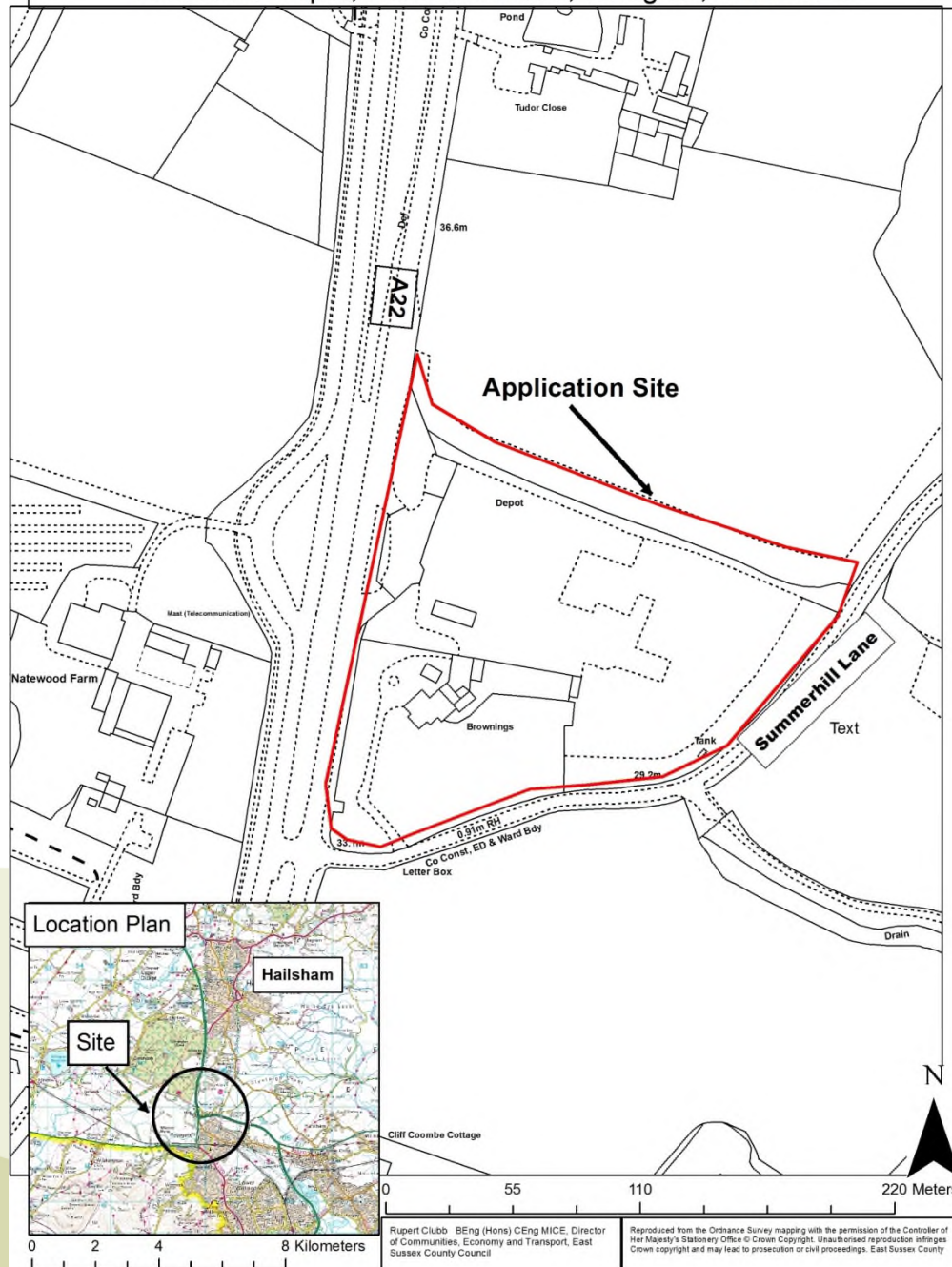
East Sussex County Council Planning Committee 16 December 2020

WD/843/CM

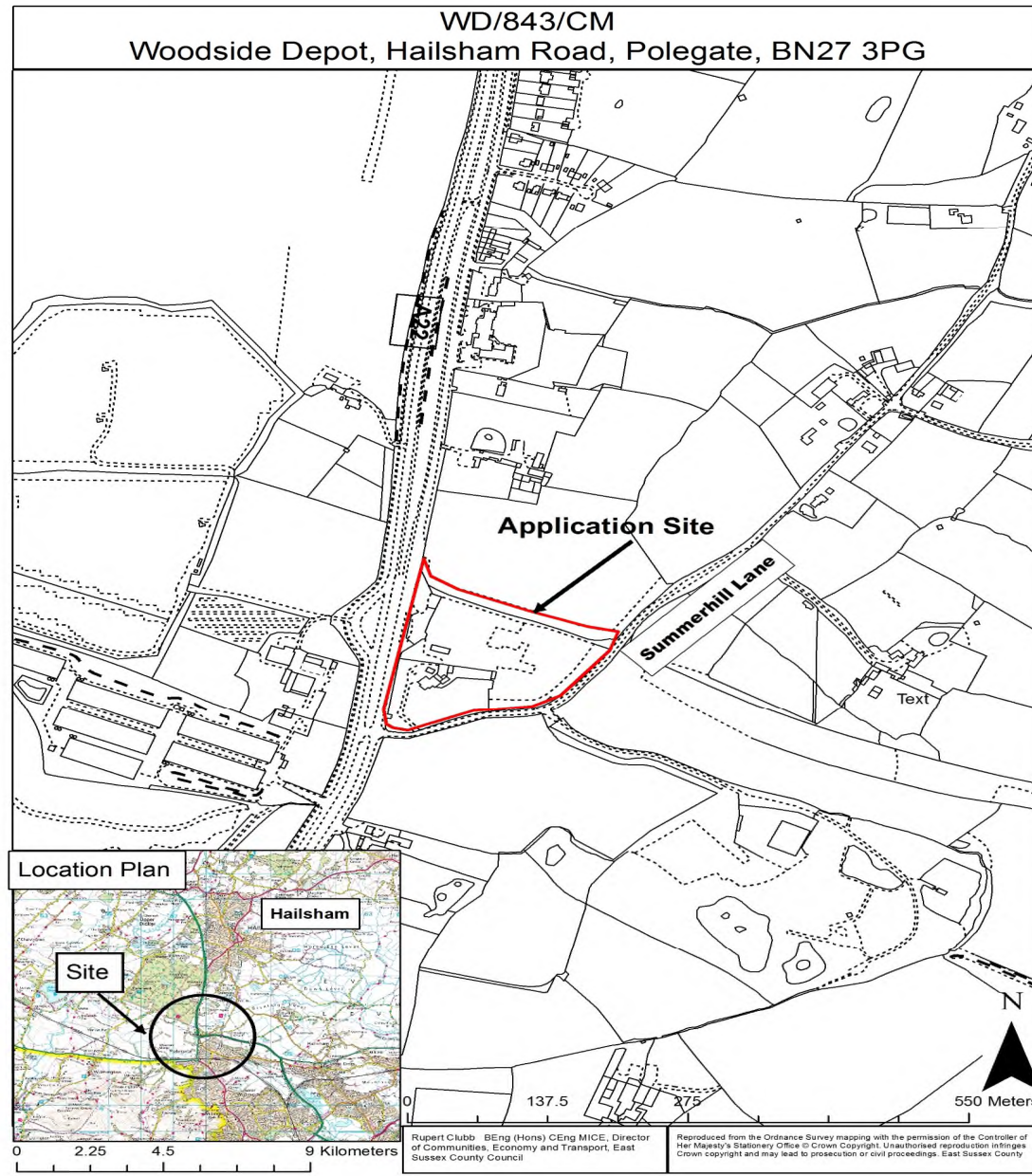
Reconfiguration of site layout including:- extension to yard; installation of vertical silo; installation of weighbridge; erection of storage building; operation of concrete crusher; new lighting scheme; new drainage infrastructure; full conversion of Brownings to office and HMO accommodation

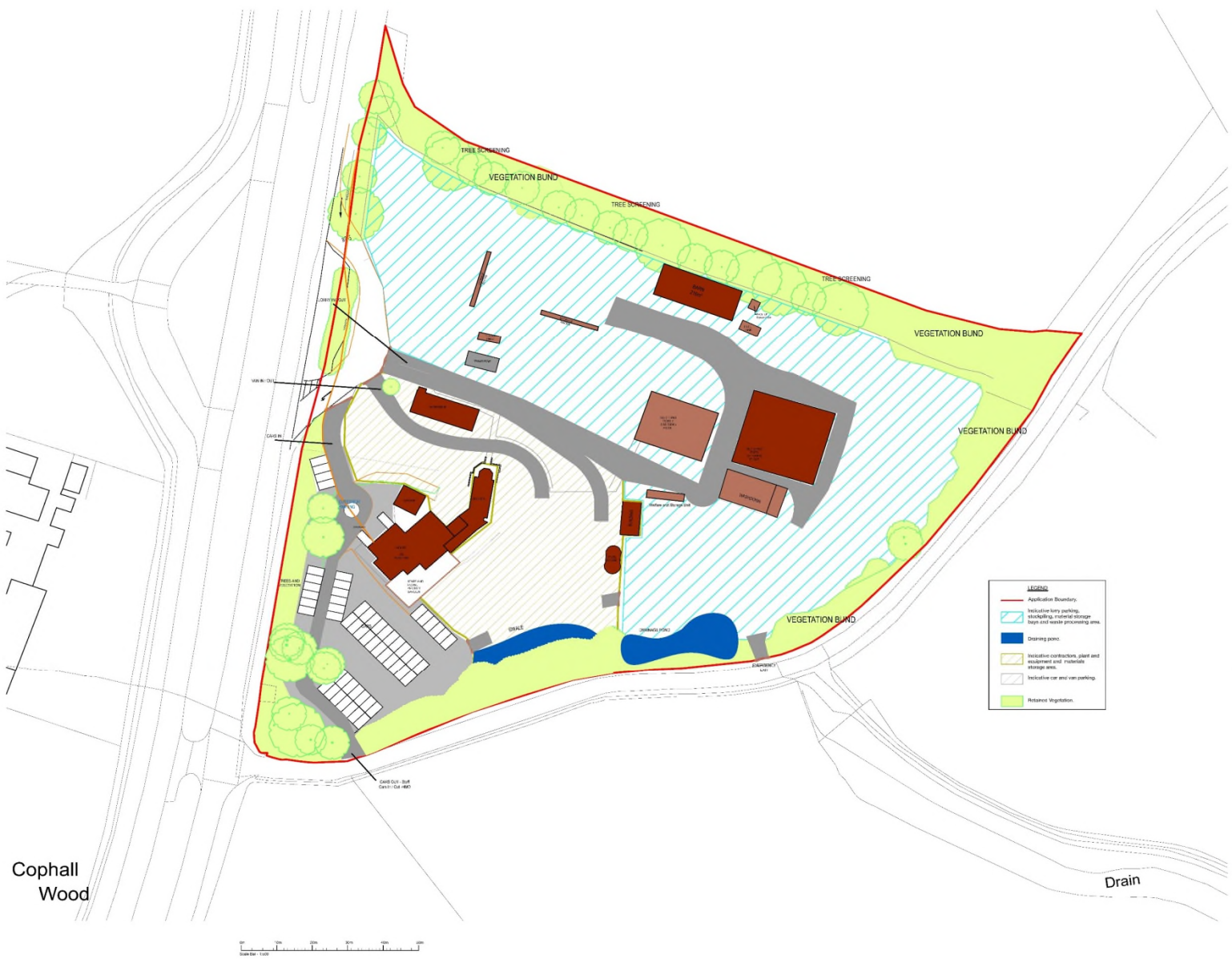
Woodside Depot, Hailsham Road, Polegate BN27 3PG

WD/843/CM
Woodside Depot, Hailsham Road, Polegate, BN27 3PG









Cophall Wood



Drawn By Design Team Member:
Ben Baker, Bill Brown,
And Richard Rastall

2. Consultation with Local Authorities
3. Consultation with Local Residents
4. Consultation with Local Businesses

5. Consultation with Local Community
6. Consultation with Local Media

7. Consultation with Local Council

8. Consultation with Local Parish Council

9. Consultation with Local Neighbors

10. Consultation with Local Stakeholders

11. Consultation with Local Interest Groups

12. Consultation with Local Environmental Groups

13. Consultation with Local Historical Society

14. Consultation with Local Heritage Groups

15. Consultation with Local Arts and Culture Groups

16. Consultation with Local Sports and Leisure Groups

17. Consultation with Local Religious Groups

18. Consultation with Local Charitable Organizations

19. Consultation with Local Voluntary Organizations

20. Consultation with Local Trade Unions

21. Consultation with Local Employers

22. Consultation with Local Suppliers

23. Consultation with Local Contractors

24. Consultation with Local Service Providers

25. Consultation with Local Residents' Association

26. Consultation with Local Business Association

27. Consultation with Local Chamber of Commerce

28. Consultation with Local Trade Association

29. Consultation with Local Industry Association

30. Consultation with Local Professional Association

31. Consultation with Local Academic Association

32. Consultation with Local Research Institute

33. Consultation with Local Think Tank

34. Consultation with Local Policy Group

35. Consultation with Local Advisory Committee

36. Consultation with Local Steering Group

37. Consultation with Local Working Group

38. Consultation with Local Task Force

39. Consultation with Local Task Group

40. Consultation with Local Task Team

41. Consultation with Local Task Unit

42. Consultation with Local Task Cell

43. Consultation with Local Task Network

44. Consultation with Local Task Alliance

45. Consultation with Local Task Consortium

46. Consultation with Local Task Partnership

47. Consultation with Local Task Joint Venture

48. Consultation with Local Task Strategic Alliance

49. Consultation with Local Task Public-Private Partnership

50. Consultation with Local Task Public-Private Joint Venture

51. Consultation with Local Task Public-Private Partnership

52. Consultation with Local Task Public-Private Joint Venture

53. Consultation with Local Task Public-Private Partnership

54. Consultation with Local Task Public-Private Joint Venture

55. Consultation with Local Task Public-Private Partnership

56. Consultation with Local Task Public-Private Joint Venture

57. Consultation with Local Task Public-Private Partnership

58. Consultation with Local Task Public-Private Joint Venture

59. Consultation with Local Task Public-Private Partnership

60. Consultation with Local Task Public-Private Joint Venture

61. Consultation with Local Task Public-Private Partnership

62. Consultation with Local Task Public-Private Joint Venture

63. Consultation with Local Task Public-Private Partnership

64. Consultation with Local Task Public-Private Joint Venture

65. Consultation with Local Task Public-Private Partnership

66. Consultation with Local Task Public-Private Joint Venture

67. Consultation with Local Task Public-Private Partnership

68. Consultation with Local Task Public-Private Joint Venture

69. Consultation with Local Task Public-Private Partnership

70. Consultation with Local Task Public-Private Joint Venture

71. Consultation with Local Task Public-Private Partnership

72. Consultation with Local Task Public-Private Joint Venture

73. Consultation with Local Task Public-Private Partnership

74. Consultation with Local Task Public-Private Joint Venture

75. Consultation with Local Task Public-Private Partnership

76. Consultation with Local Task Public-Private Joint Venture

77. Consultation with Local Task Public-Private Partnership

78. Consultation with Local Task Public-Private Joint Venture

79. Consultation with Local Task Public-Private Partnership

80. Consultation with Local Task Public-Private Joint Venture

81. Consultation with Local Task Public-Private Partnership

82. Consultation with Local Task Public-Private Joint Venture

83. Consultation with Local Task Public-Private Partnership

84. Consultation with Local Task Public-Private Joint Venture

85. Consultation with Local Task Public-Private Partnership

86. Consultation with Local Task Public-Private Joint Venture

87. Consultation with Local Task Public-Private Partnership

88. Consultation with Local Task Public-Private Joint Venture

89. Consultation with Local Task Public-Private Partnership

90. Consultation with Local Task Public-Private Joint Venture

91. Consultation with Local Task Public-Private Partnership

92. Consultation with Local Task Public-Private Joint Venture

93. Consultation with Local Task Public-Private Partnership

94. Consultation with Local Task Public-Private Joint Venture

95. Consultation with Local Task Public-Private Partnership

96. Consultation with Local Task Public-Private Joint Venture

97. Consultation with Local Task Public-Private Partnership

98. Consultation with Local Task Public-Private Joint Venture

99. Consultation with Local Task Public-Private Partnership

100. Consultation with Local Task Public-Private Joint Venture

Job:

Woodside Depot
Folegate Road
Hallsford
BN27 3PG

Client:

Hallsford Roadways Construction Co Ltd

Stage:

Planning Application

Works:

Proposed Site Layout

Drawing Scale:

1:500

Drawing Size:

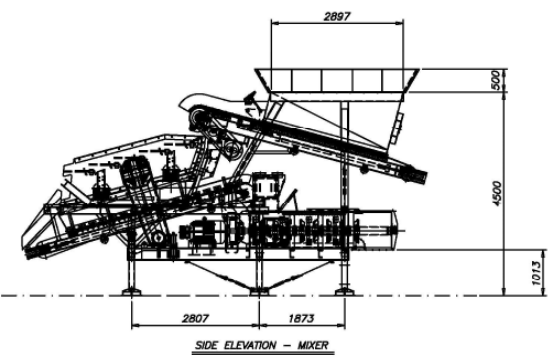
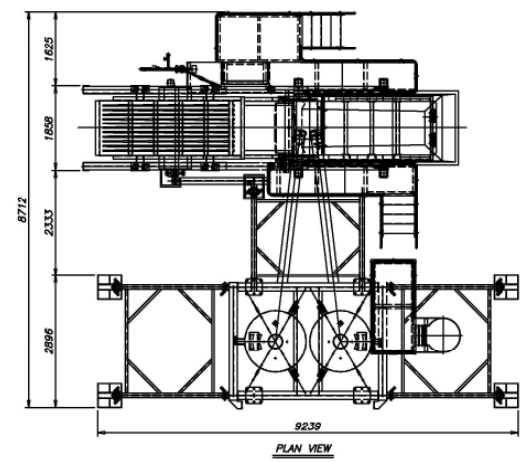
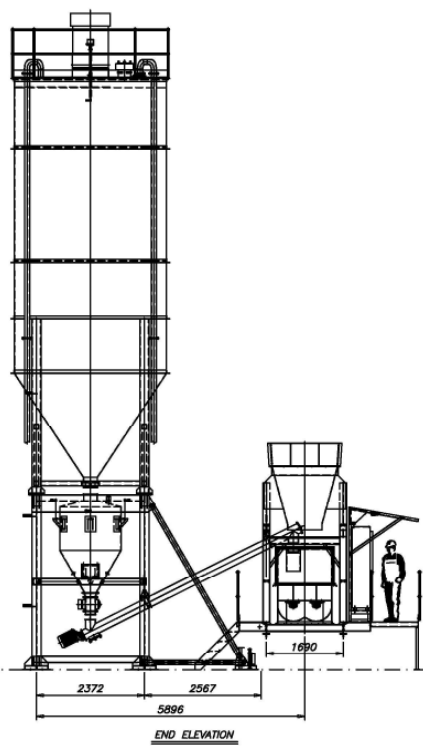
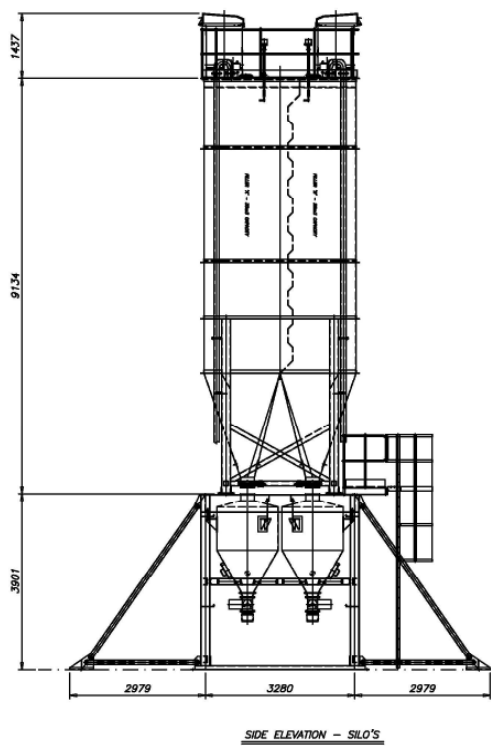
A1

Drawing No:

BA1652.09

Revision:

WEIGH HOPPER ARRANGEMENTS AND SUPPORT STRUCTURES

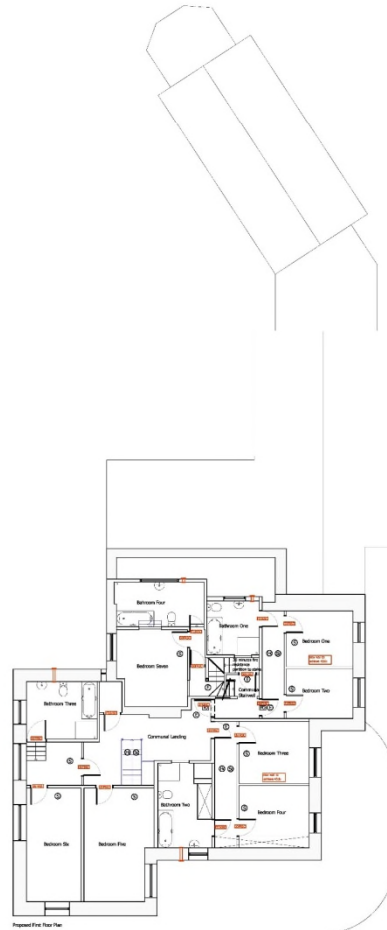
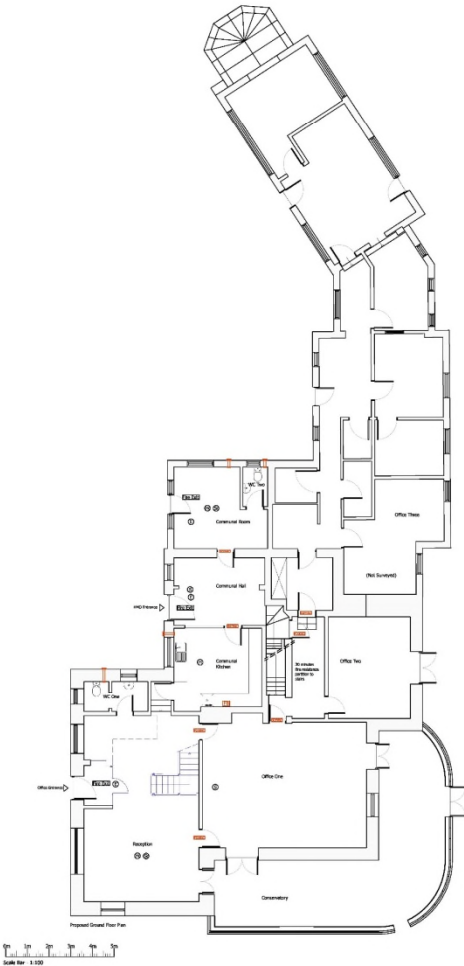


P 1187

THIS DRAWING OWNED BY B.G. EUROPA (UK) LTD MIDNHAMPTON, NENHAMPT, ENGLAND IS CONDITIONALLY LOANED TO		WHO BY RECEIVING IT HAS AGREED NOT TO REPRODUCE OR COPY IT, IN WHOLE OR PART, OR TO FURNISH INFORMATION FROM IT TO OTHERS, OR TO HAVE ANY USE OF IT THAT IT IS OR MAY BE DANGEROUS TO B.G. EUROPA (UK) LTD AND TO RETURN IT UPON REQUEST.	
ARRANGEMENT OF 809 WEIGH HOPPER & SUPPORT STRUCTURE		DRAWN BY: G. A. NICK	
CUSTOMER		SCALE: 1/75 @ A1	
ORDER NO.		DWG NO. PL 1429	
		SHEET 1 OF 3	

8





North East Elevation



North West Elevation



South East Elevation



South West Elevation



Drawing based upon
clients survey/ drawings

Drawn by: Baker, Peter, Thomas
Architectural Services
11/05/2015
Architectural Services Ltd
11/05/2015
Architectural Services Ltd
11/05/2015
Architectural Services Ltd
11/05/2015



Client: Baker, Peter, Thomas

Project: Planning

Notes:

Drawings: 1/100, 1/50, 1/20, 1/10, 1/5, 1/2, 1/1

Drawing No: 1/100

Drawing No: 1/50

Drawing No: 1/20

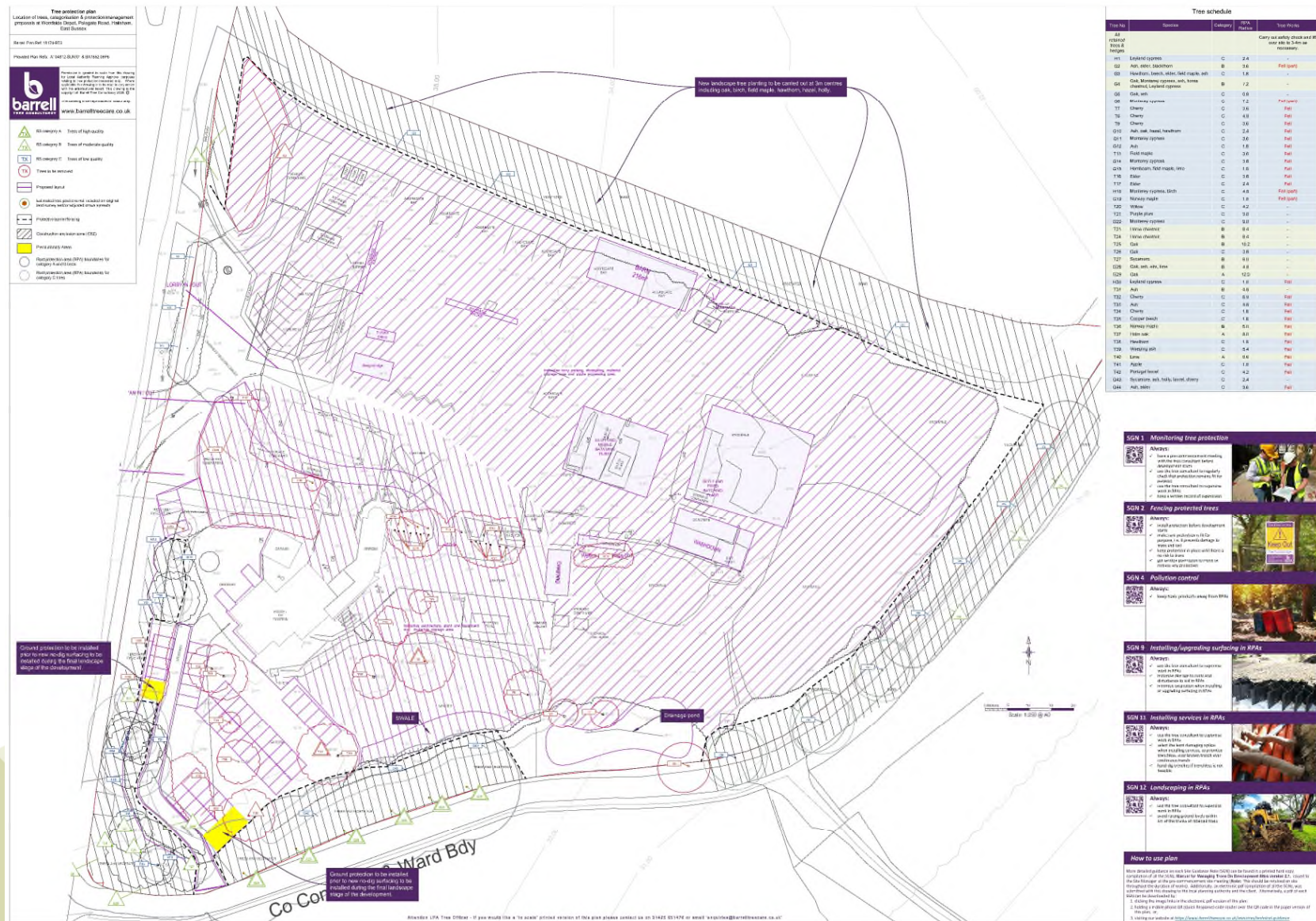
Drawing No: 1/10

Drawing No: 1/5

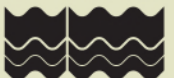
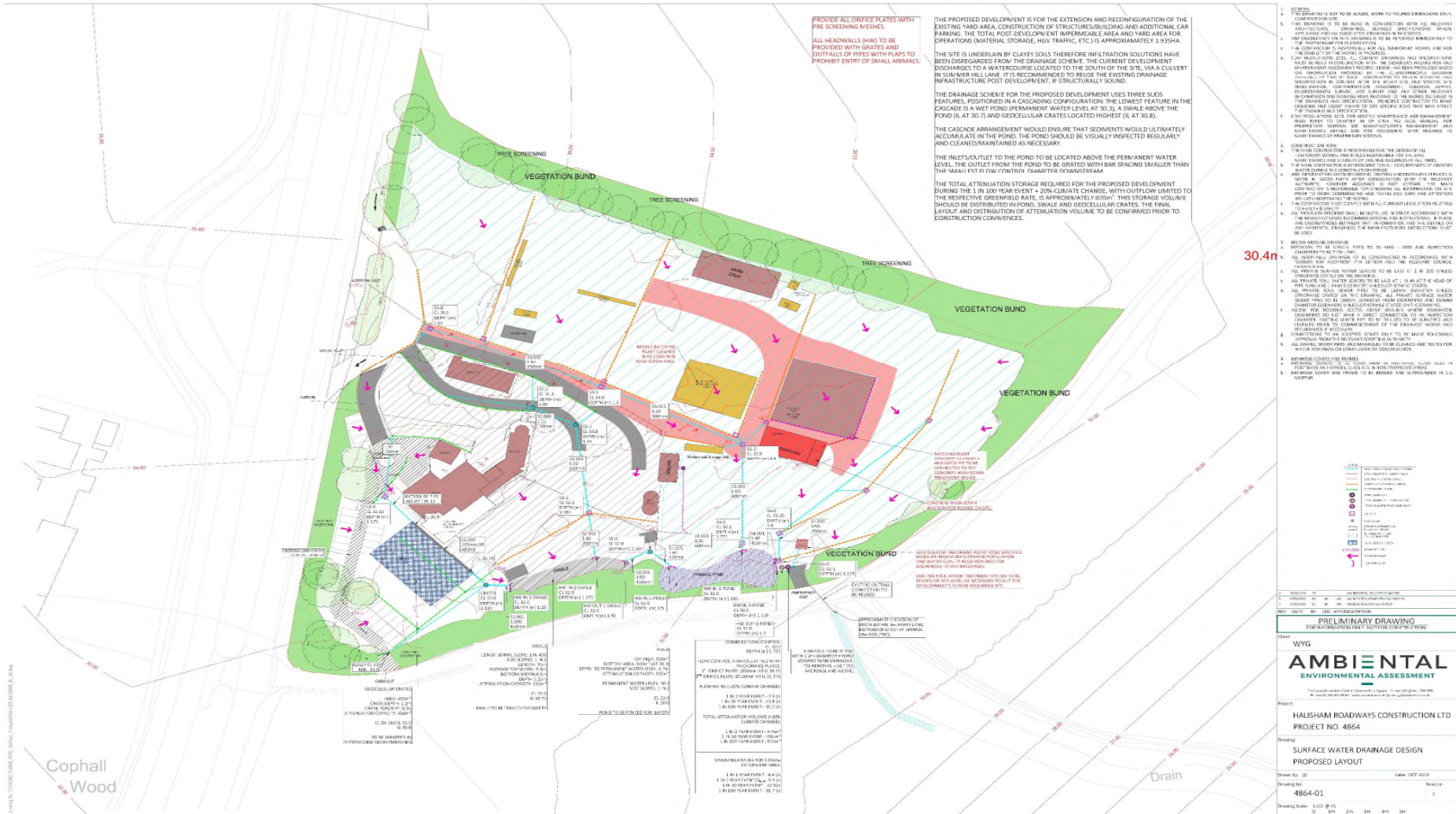
Drawing No: 1/2

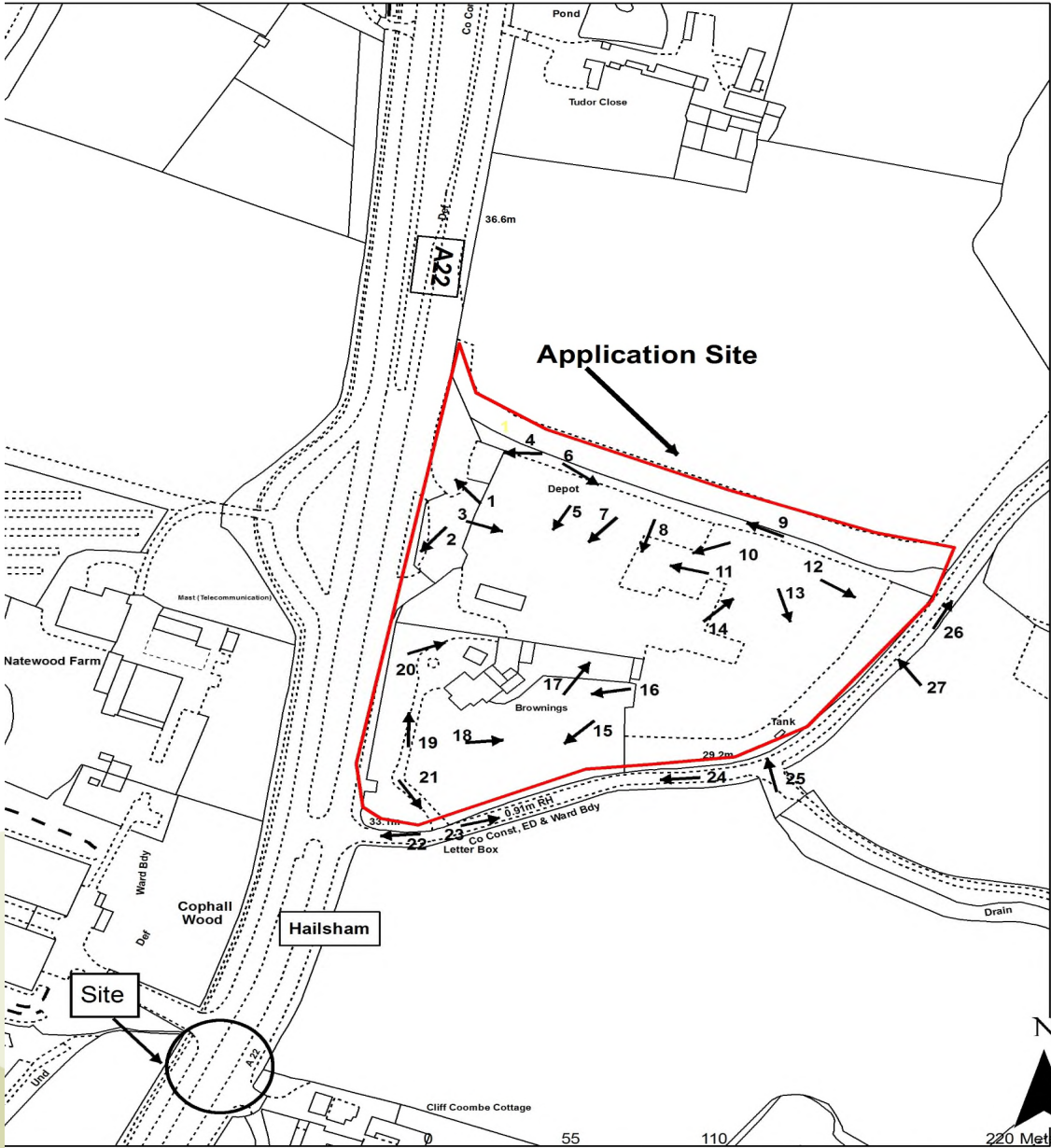
Drawing No: 1/1

TREE PROTECTION PLAN



SURFACE WATER DRAINAGE DESIGN – PROPOSED LAYOUT





1. Access into depot from A22



2. Egress from depot onto A22



3. View east / north east across depot



4. North-western side of depot



5. Western part of depot – parking and storage



6. Northern side of depot looking east



7. View south-west across central-western side of depot



8. South-central side of depot



9. Central-northern part of depot



10. Horizontal silo – southern part of depot



11. Central part of depot looking west



12. Materials stockpiles at eastern part of site



13. Material stockpiles at south-eastern part of site



14. View north-east across eastern part of depot



15. Garden of Brownings looking south-west



16. Garden of Brownings looking west



17. Building used as laboratory from Brownings' garden with stockpiles to the rear



18. Garden of Brownings looking east



19. Driveway of Brownings looking north



20. Front of Brownings



21. Access from Brownings onto Summerhill Lane



22. Looking west from junction of Brownings' access with Summerhill Lane



23. Looking east from junction of Brownings' access with Summerhill Lane



24. Looking west along Summerhill Lane with site behind hedgerow to the right



25. South-eastern part of site from Summerhill Lane showing damage to trees on boundary



26. View north-east along Summerhill Lane with site on left



27. View of silo looking north-west from Summerhill Lane



WD/843/CM

Reconfiguration of site layout including: extension to yard; installation of vertical silo; installation of weighbridge; erection of storage building; operation of concrete crusher; new lighting scheme; new drainage infrastructure; full conversion of Brownings to office and HMO accommodation

Woodside Depot, Hailsham Road, Polegate BN27 3PG