

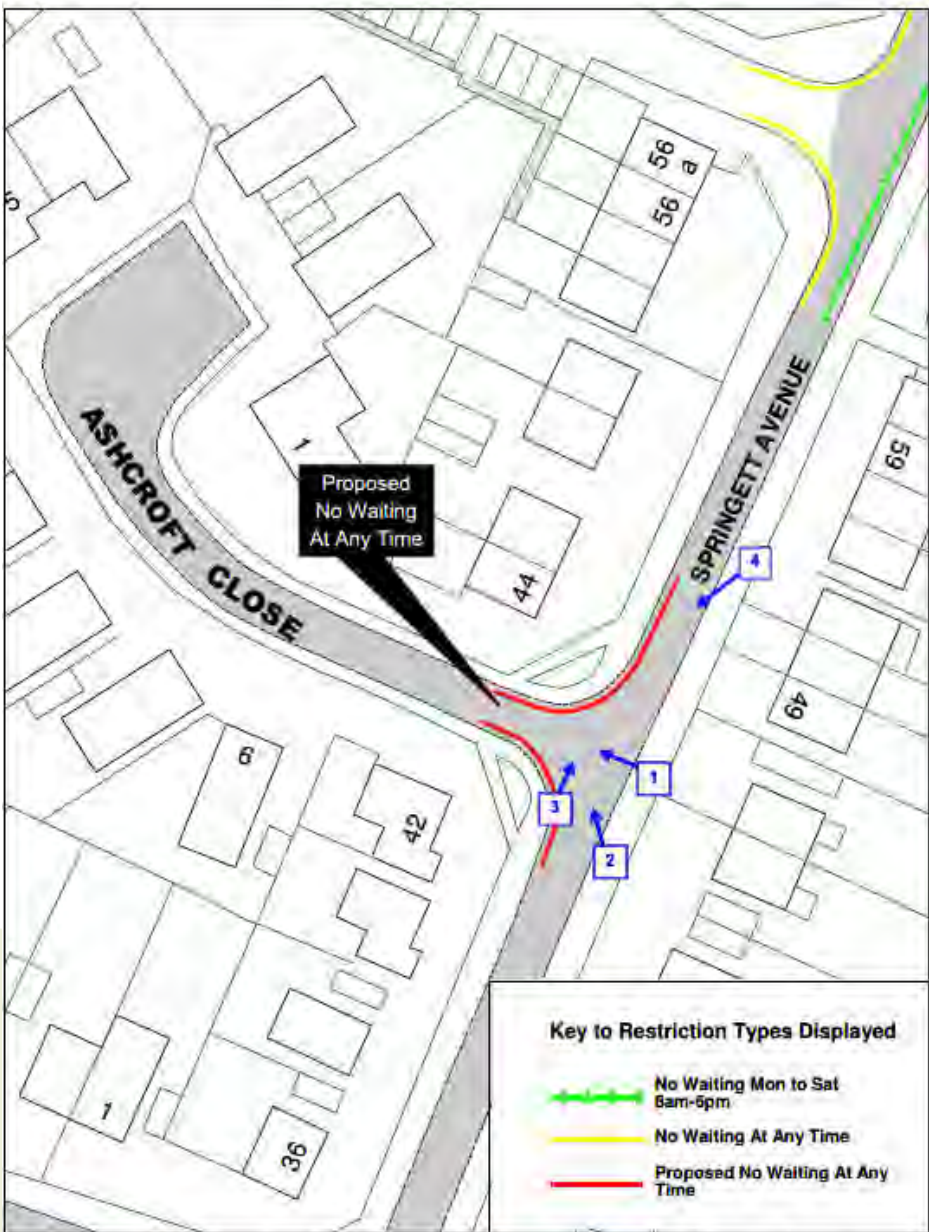
# East Sussex County Council Planning Committee 14 July 2021

# **Traffic Regulation Order: Lewes Parking Review 2020 - 2021**

Objections received to changes to parking and waiting restrictions proposed during the latest parking review in Lewes town and district







© Crown Copyright. All rights reserved.  
East Sussex County Council  
License No. 100010001 2020

Site 1

Ashcroft Close and Springett Avenue  
Ringmer

SCALE	
DATE	
DRAWN BY	LW20 17F
CHECKED BY	



View 1 - Looking towards Ashcroft Close from outside number 51 Springett Avenue.





View 2 - Looking north-eastwards towards the Ashcroft Close and Springett Avenue junction from outside number 53 Springett Avenue.



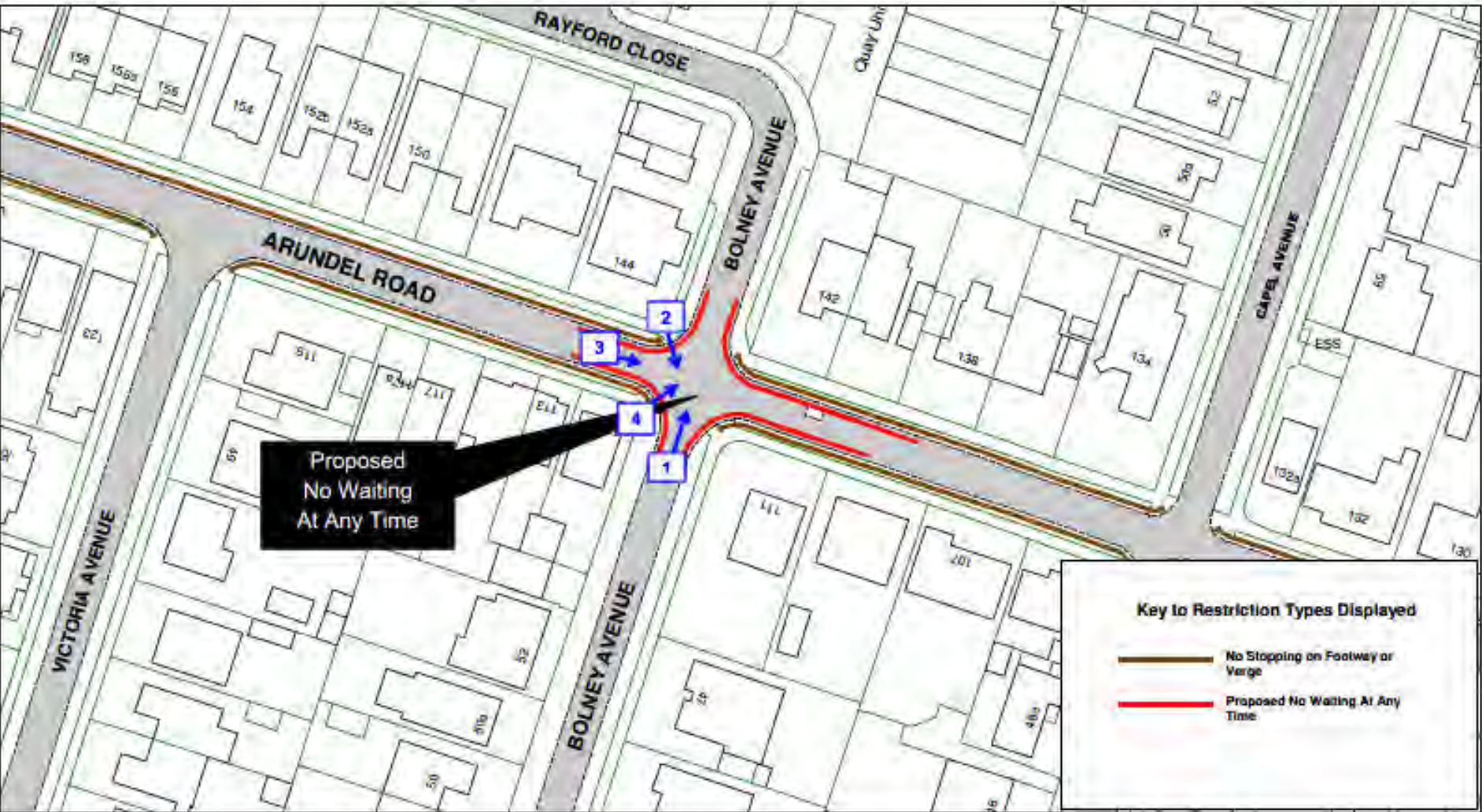
View 3 - Looking north-eastwards along Springett Avenue from Ashcroft Close.






View 4 - Looking southwards down Springett Avenue from outside number 55  
Springett Avenue.







**Site 2**

Arundel Road and Bolney Avenue  
Peacehaven

SCALE	
DATE	
DRAWING No.	LW20 11
DRAWN BY	
© Crown copyright. All rights reserved. East Sussex County Council Licence No. 100016611, 2009	



View 1 - Looking northwards towards the northern section of Bolney Avenue.





View 2 - Looking south-eastwards across Arundel Road to the southern section of Bolney Avenue.



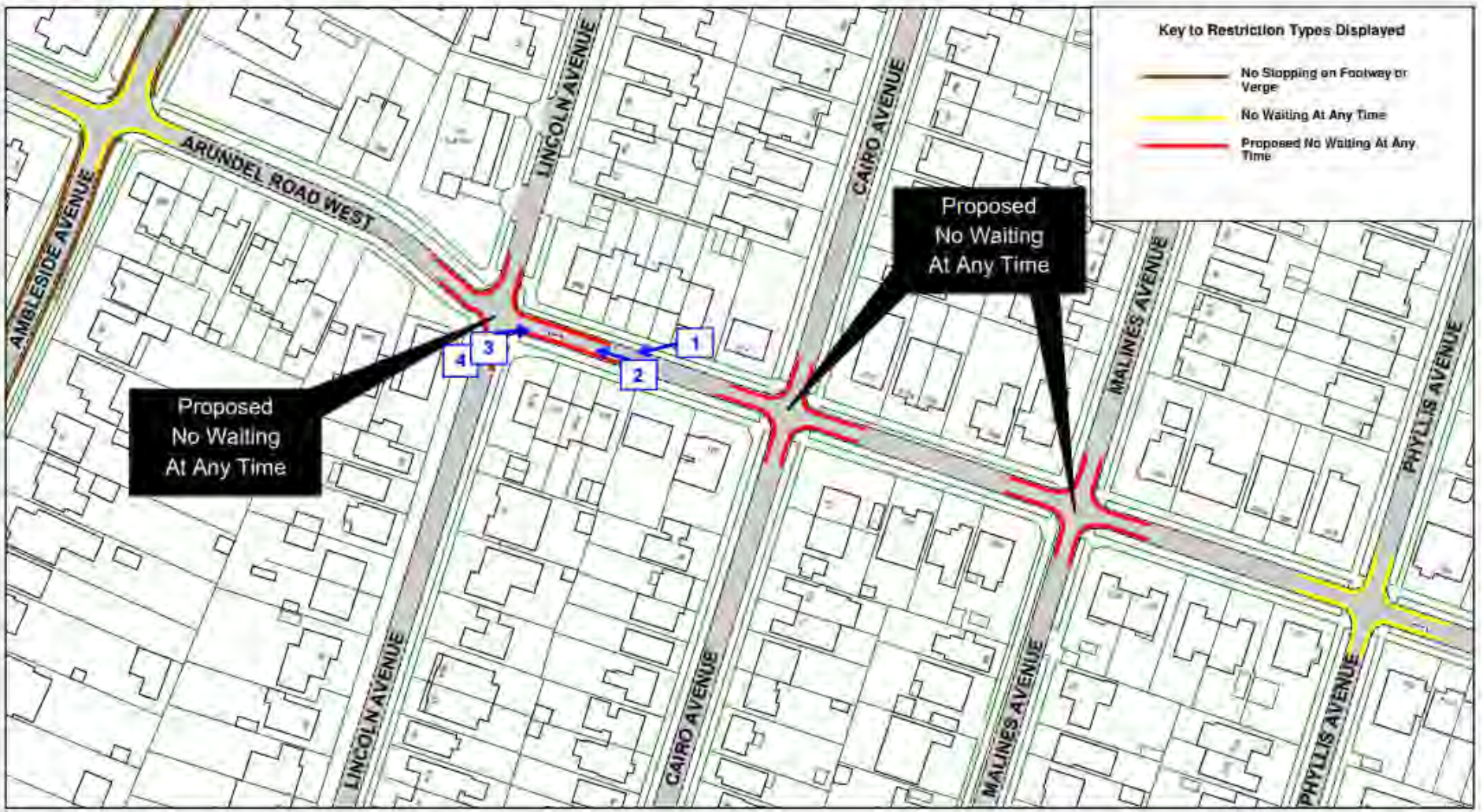



View 3 - Looking eastwards down Arundel Road from its junction with Bolney Avenue.




View 4 - Looking northwards across at the junction of the northern section of Bolney Avenue with Arundel Road.







East Sussex  
County Council



Site 3

Arundel Road West, Cairo Avenue, Lincoln Avenue, Malines Avenue  
Peacehaven

SCALE	
DATE	
DRAWING No:	LW20 12F
DRAWN BY:	
© Crown copyright. All rights reserved. East Sussex County Council License No. 100029230	





View 1 - Looking south-westwards from outside number 276 Arundel Road West to the priority working give way markings.



View 2 - Looking westwards along Arundel Road West to the junction with Lincoln Avenue.





View 3 - Looking eastwards along Arundel Road West from the Lincoln Avenue junction.





View 4 - Looking eastwards along Arundel Road West from the Lincoln Avenue junction.



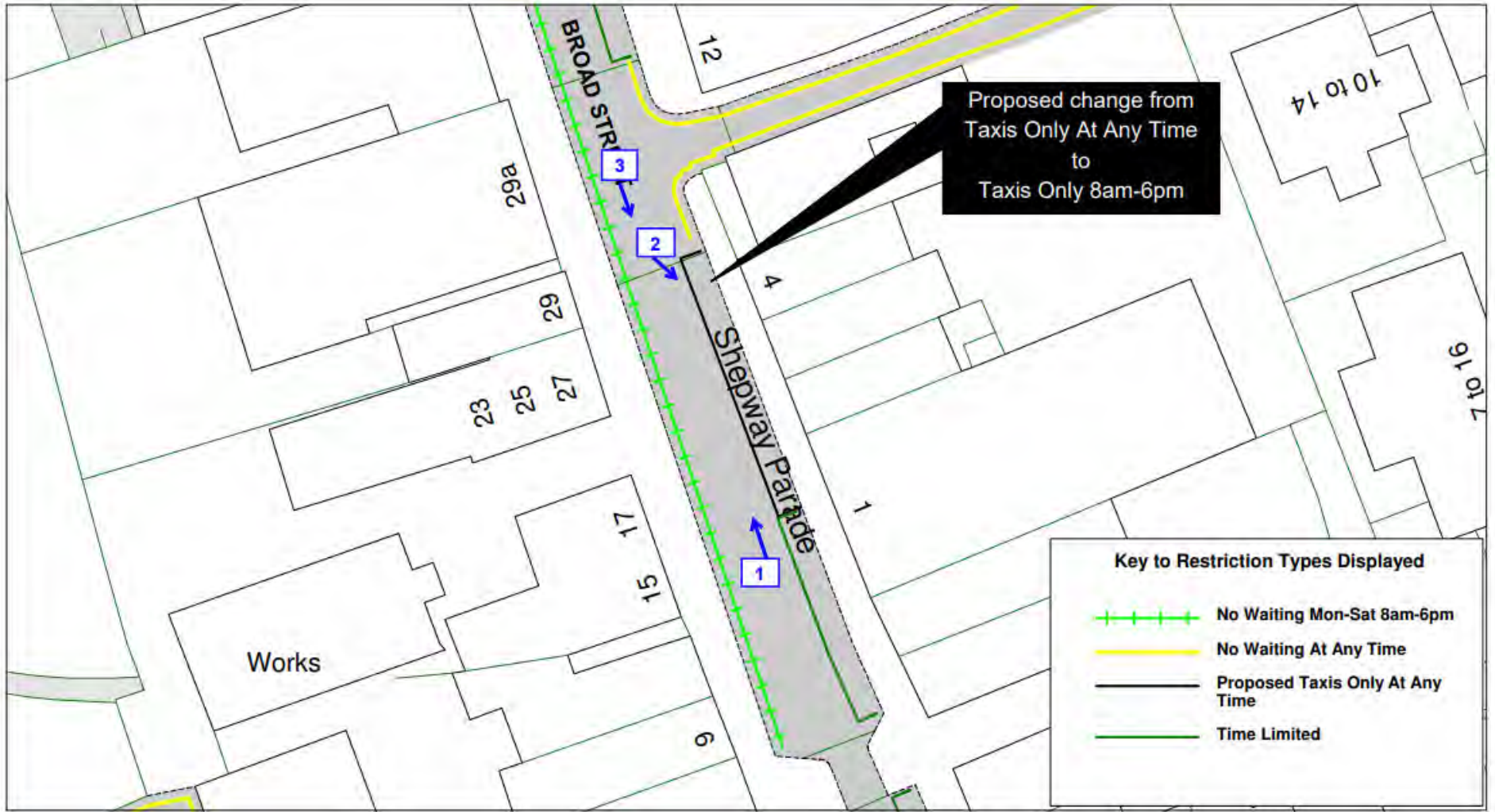
View 5 - Looking from number 286 Arundel Road West south-eastwards across to the priority working build out.





View 6 - Looking eastwards along Arundel Road West from outside number 249 Arundel Road West.







East Sussex  
County Council



Site 4  
Broad Street  
Seaford

SCALE	
DATE	
DRAWING No.	LW20 18F
DRAWN BY	
© Crown copyright. All rights reserved East Sussex County Council Licence No. 100019601 2020	



View 1 - Looking northwards along Broad Street.





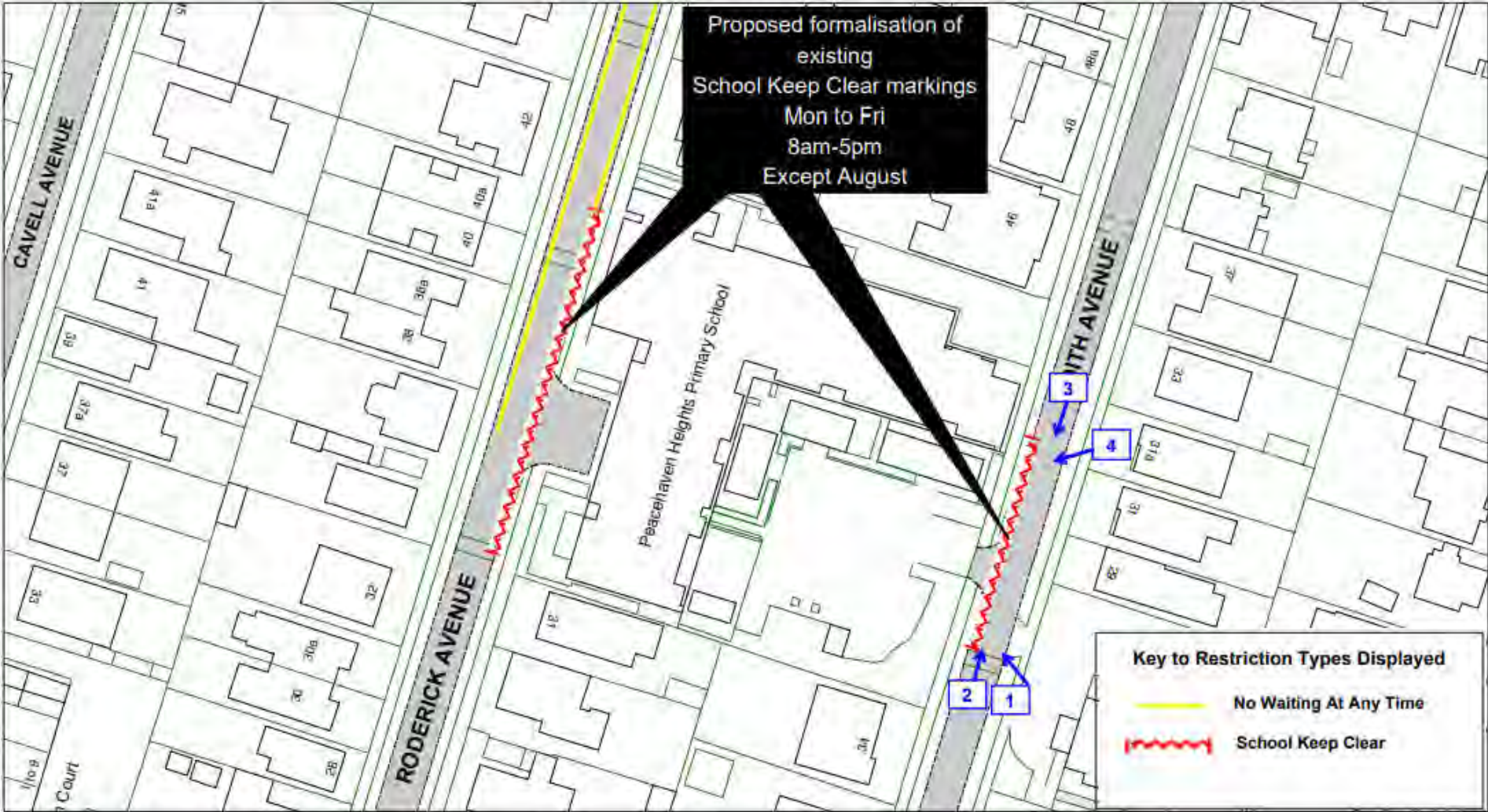
View 2 - Looking southwards along Broad Street.







View 3 - Looking southwards along Broad Street.







East Sussex  
County Council



Site 5

Edith Avenue and Roderick Avenue  
Peacehaven

SCALE	
DATE	
DRAWING No.	LW20 14F
DRAWN BY	
© Crown copyright. All rights reserved East Sussex County Council Licence No. 100015621 2020	





View 1 - Looking northwards at the school zig zags from outside the Catholic church.





View 2 - Looking north-eastwards along Edith Avenue from opposite the Catholic church.



View 3 - Looking southwards along Edith Avenue from number 33.

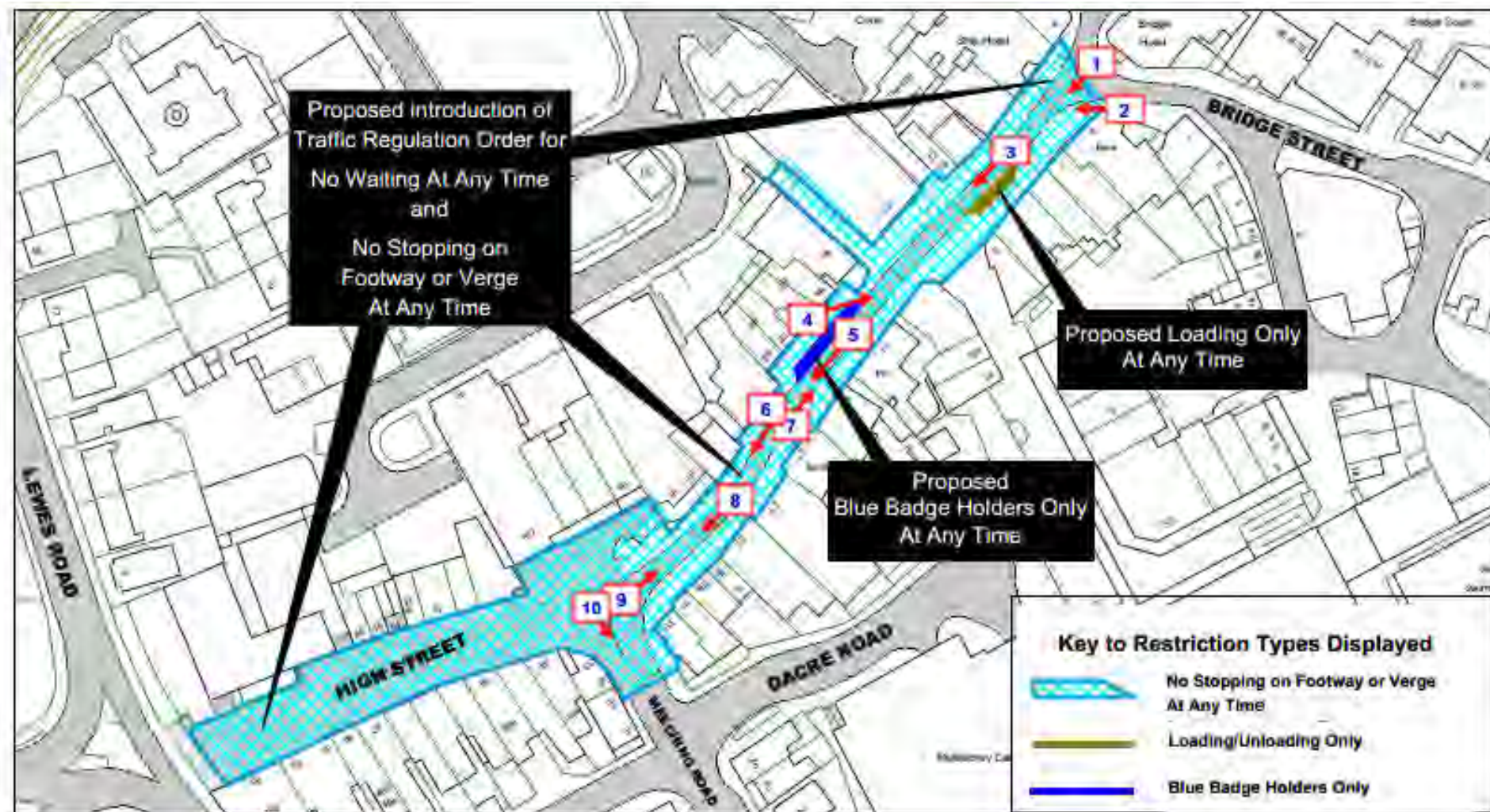




View 4 - Looking south-westwards at the school zig zags from outside number 31A.



# Site 6 High Street, Newhaven



East Sussex  
County Council



Site 6  
High Street  
Newhaven

SCALE

DATE

DRAWING NO.

LW20 19F

DRAWN BY

© Crown Copyright and Database Right  
 Ordnance Survey 2014  
 East Sussex County Council  
 2014/01/2014





View 1 - Looking along the High Street from Bridge Street.



View 2 - Looking westwards across the High Street from Bridge Street.





View 3 - Looking along the High Street from outside "Ladbroke's", number 3 High Street.







View 5 - Looking south-westwards along the High Street from outside "I like pizza", number 20 High Street.



View 6 - Looking south-westwards along the High Street from outside "The magic wok", number 30 High Street.





View 7 - Looking north-eastwards along the High Street from outside "The magic wok", number 30 High Street.

east



View 8 - Looking south-westwards along the High Street from outside "The opticians", number 34 High Street.



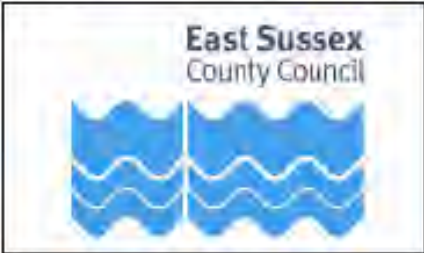
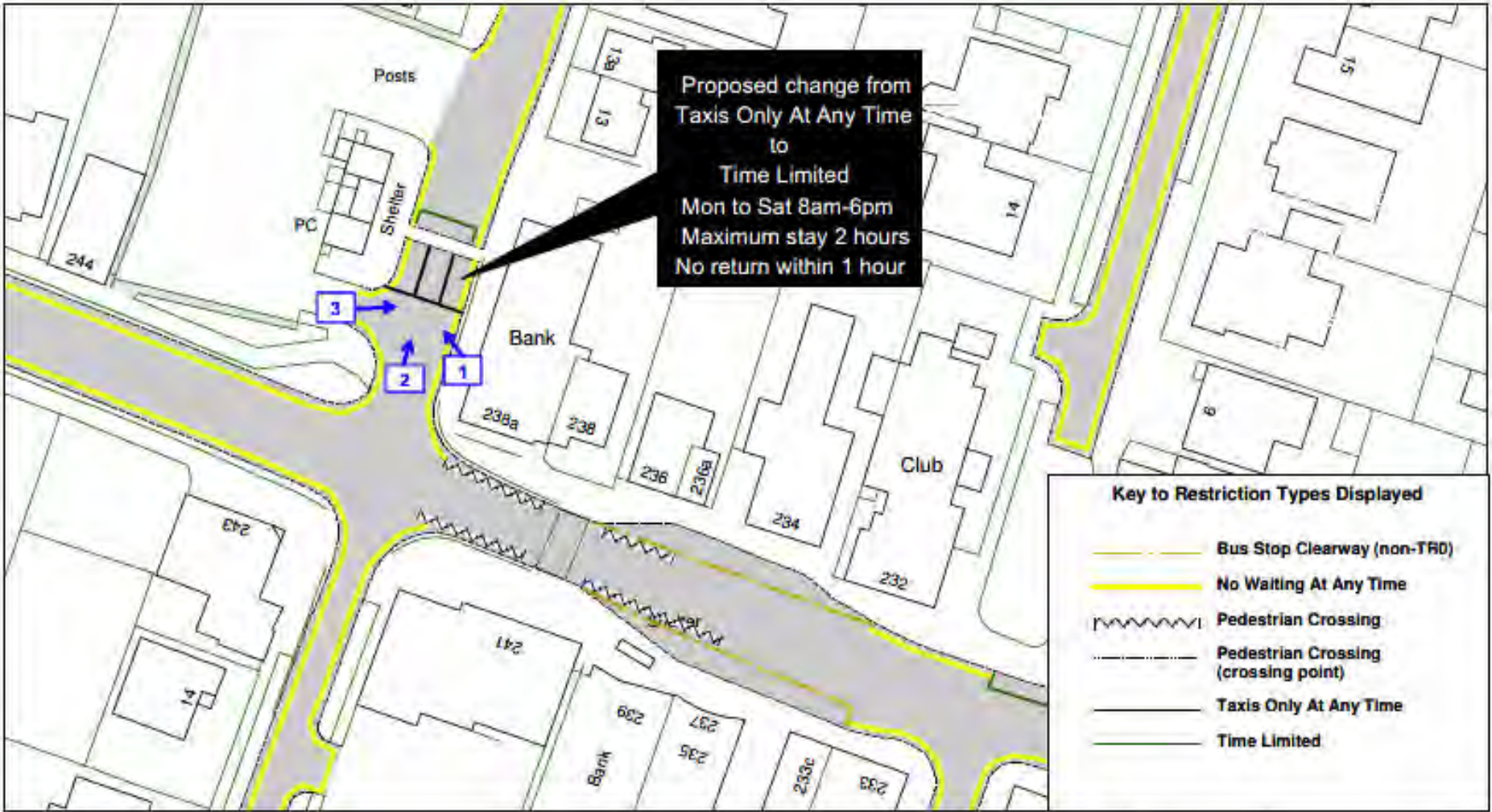


View 9 - Looking north-eastwards along the High Street from outside “the information and advice hub”, number 31a High Street.



View 10 - Looking south-eastwards along the High Street to Meeching Road from outside "the information and advice hub", number 31a High Street.





Site 7  
Roderick Avenue  
Peacehaven

SCALE	
DATE	
DRAWING No.	LW20 16F
DRAWN BY	



View 1 - Looking north-westwards at the Taxi bays from the eastern side of Barclays Bank.





View 2 - Looking northwards towards the Taxi bays.



View 3 - Looking north-eastwards at the Taxi bays from the entrance of the Roderick Avenue (North) car park.







View 1 - Looking eastwards from outside number 1 South Road. Vehicles are parking echelon to maximise parking.





View 2 - Looking south-eastwards along South Road from outside number 1 South Road.



View 3 - Looking south-eastwards along South Road from outside number 21 South Road.



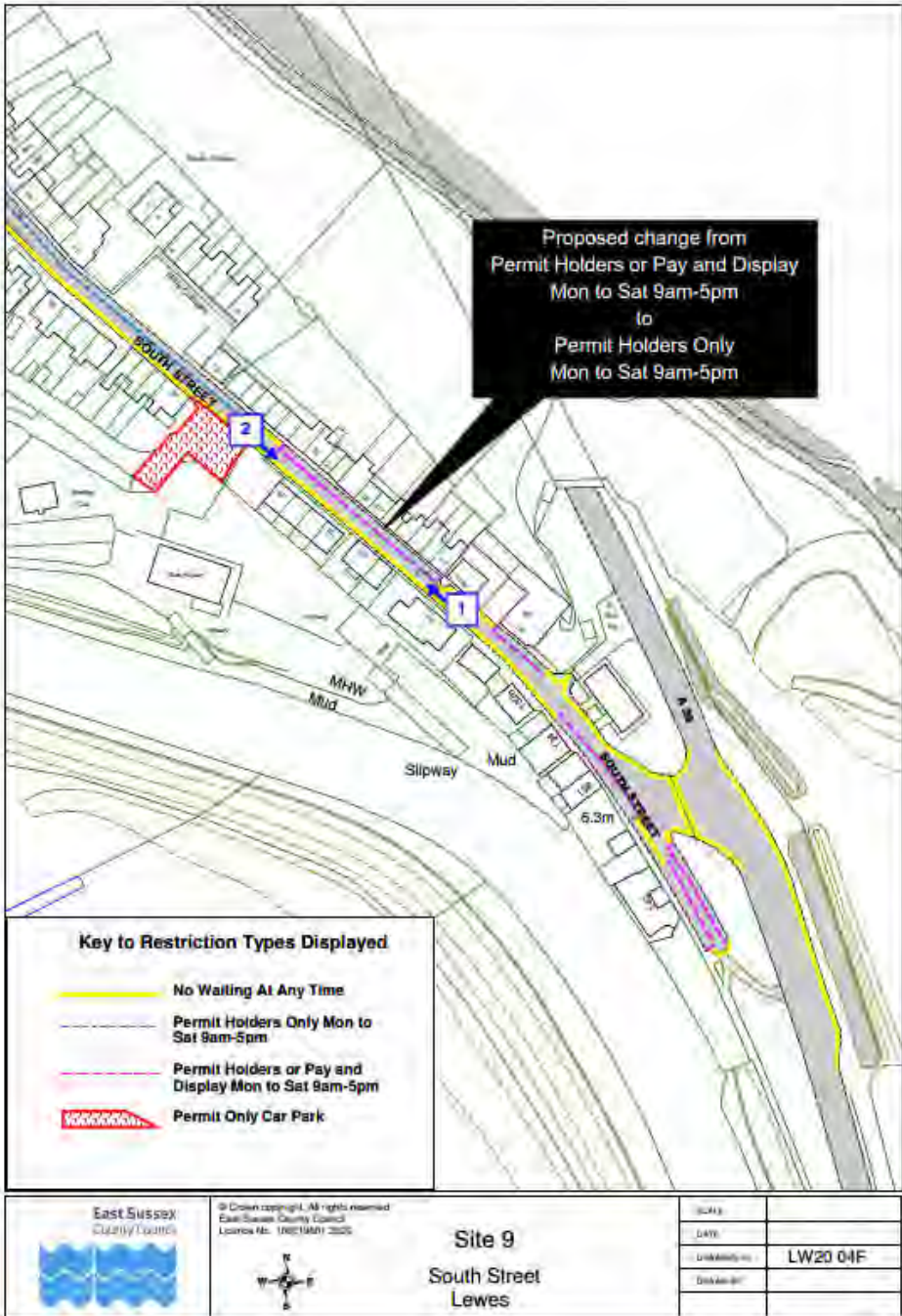


View 4 - Looking northwards towards the South Road and Southway junction from outside number 4 South Road.



View 5 - Looking at vehicles parked outside the old police station. Vehicles are parked echelon to maximise parking.





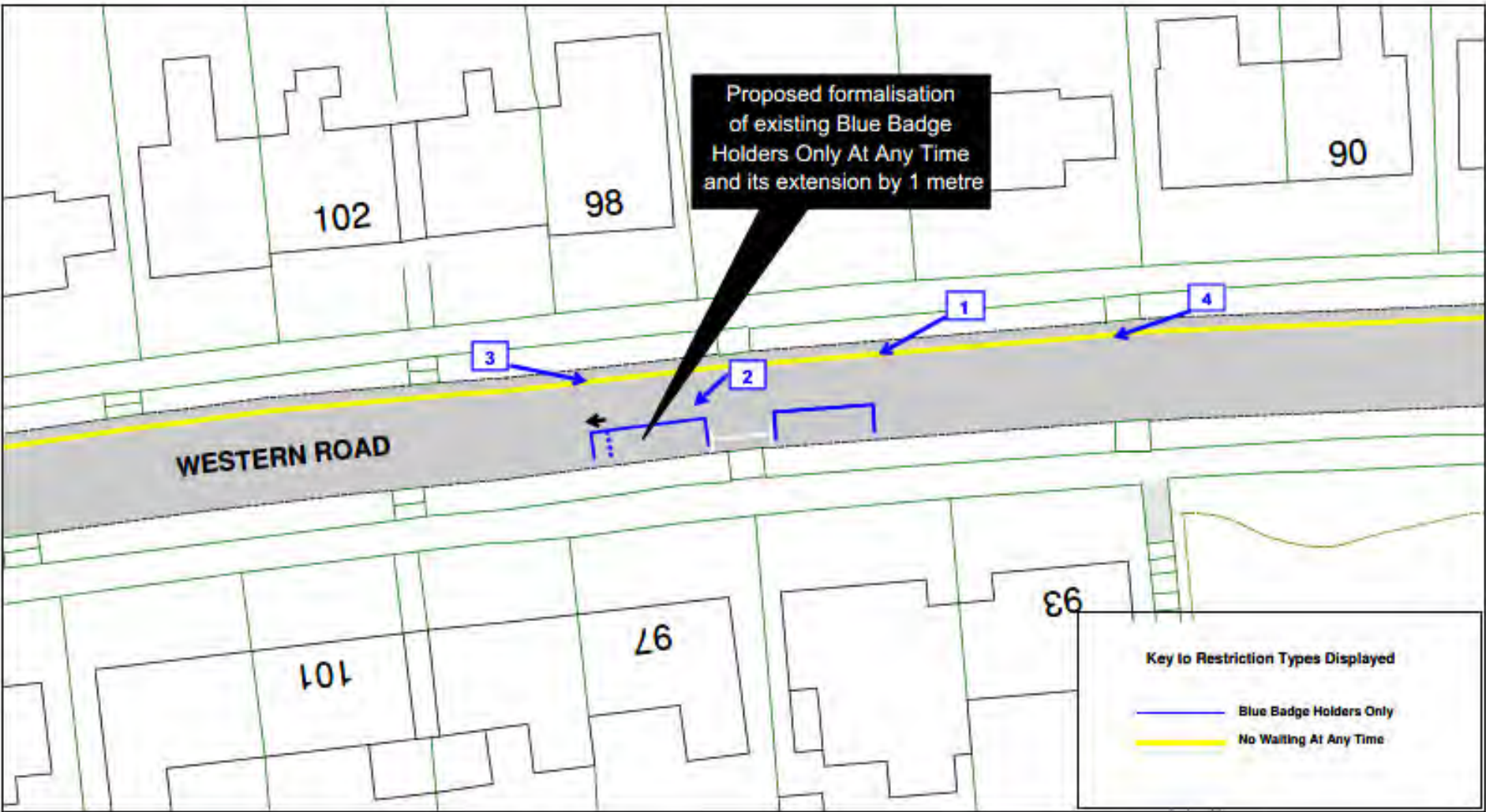


View 1 - Looking north-westwards along South Street from the end of the shared use bay.






View 2 - Looking South-eastwards along South Road from the start of the shared use bay.



East Sussex  
County Council



Site 10  
Western Road  
Newhaven



SCALE	
DATE	
DRAWING No.	LW20 10F
DRAWN BY	
© Crown copyright. All rights reserved East Sussex County Council Licence No. 1/000198/01/2020	





View 1 - Looking south-westwards across South Road to the disabled bay from outside number 94 South Road.





View 2 - Looking south-westwards across South Road to the disabled bay from outside number 96 South Road.





View 3 - Looking south-eastwards across South Road to the disabled bay from outside number 100 South Road.



View 4 - Looking westwards along South Road from outside number 92 South Road.



# **Traffic Regulation Order: Lewes Parking Review 2020 - 2021**

Objections received to changes to parking and waiting restrictions proposed during the latest parking review in Lewes town and district