

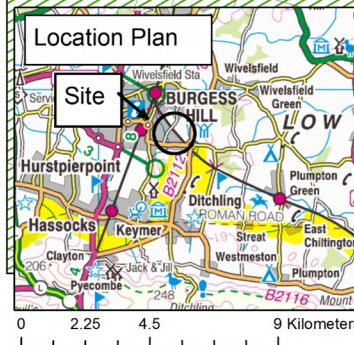
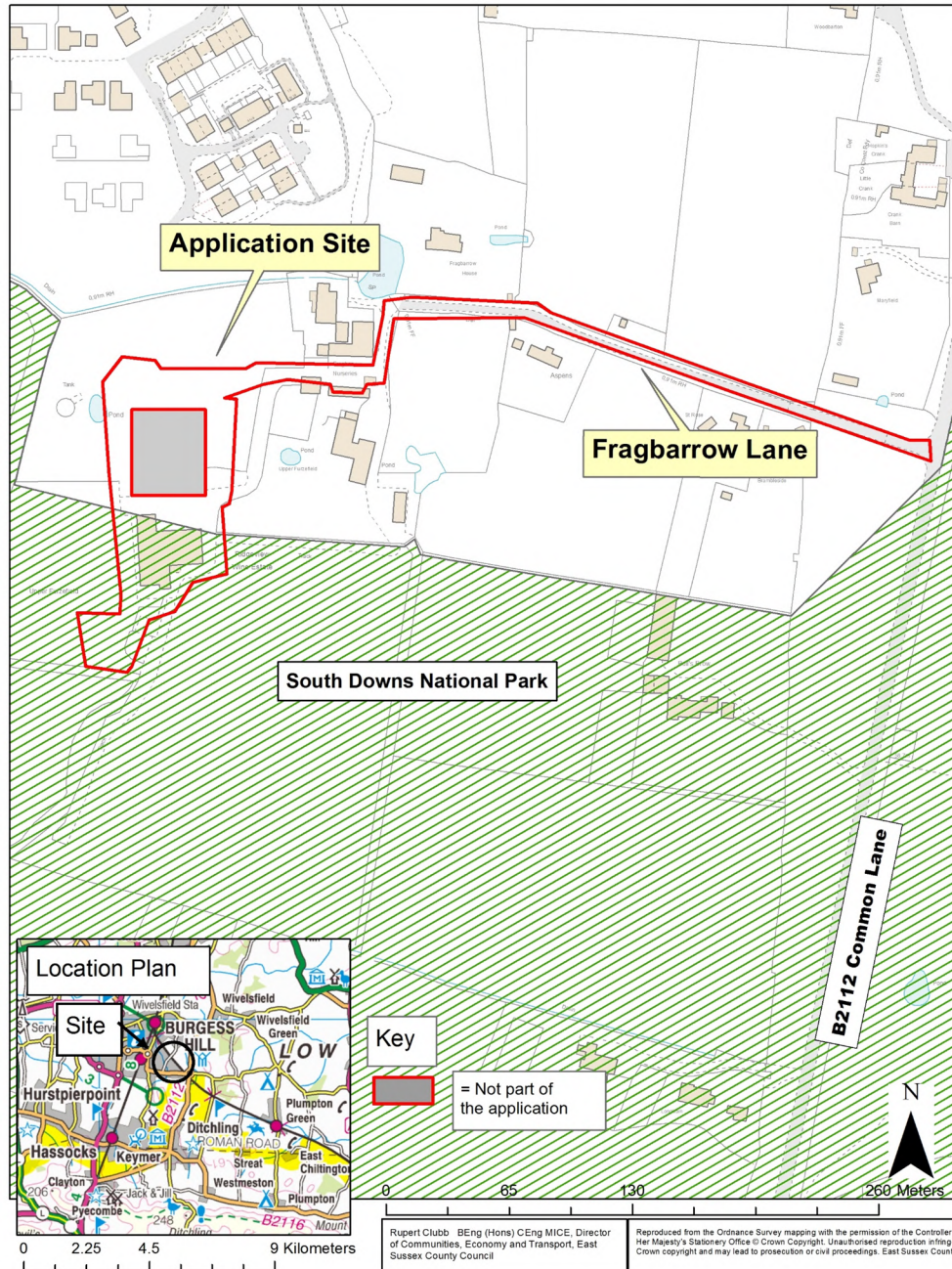
East Sussex County Council Planning Committee 16 February 2022

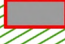
ESCC/2020/002/CB

Cross Border Application - New hospitality suite within the existing winery and the creation of a new alfresco area with associated landscaping.

Ridgeway Wine Estate, Fragbarrow Lane, Ditchling Common, BN6 8TP (Cross border application) for Ridgeway Vine Estate.

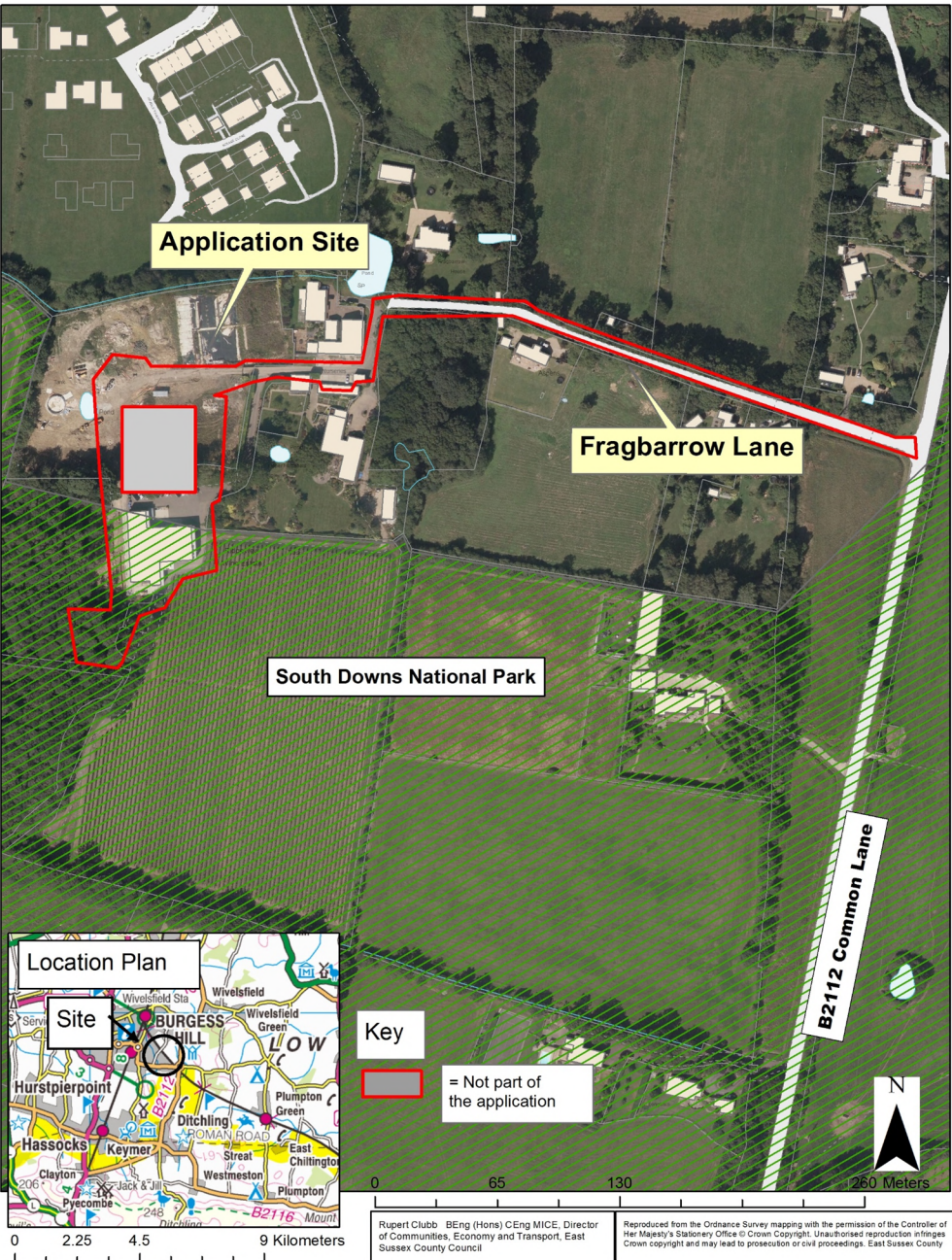
ESCC/2020/002/CB
Ridgeview Wine Estate, Fragbarrow Lane, Ditchling Common



Key
 = Not part of the application

Rupert Clubb BEng (Hons) CEng MICE, Director of Communities, Economy and Transport, East Sussex County Council

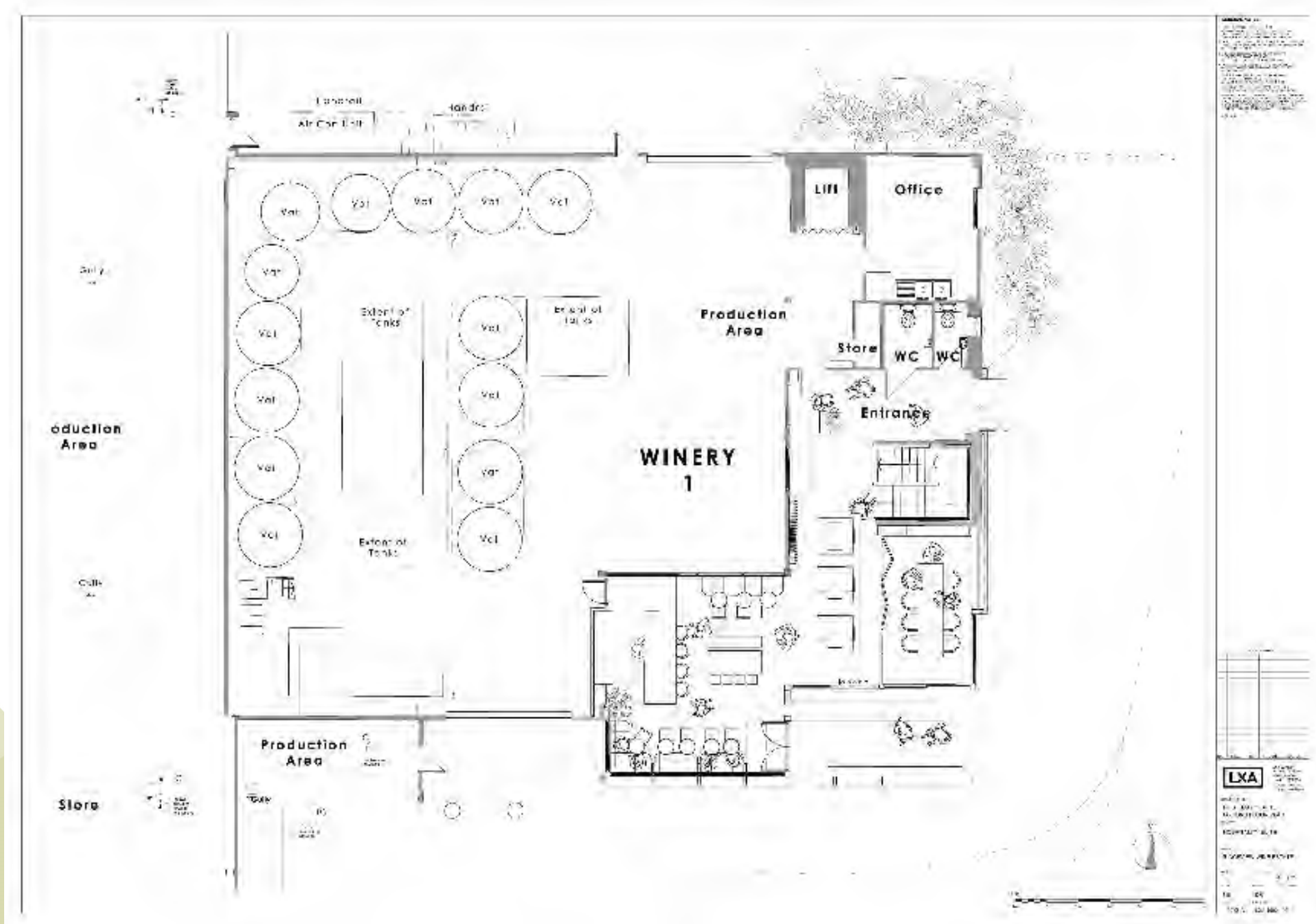
Reproduced from the Ordnance Survey mapping with the permission of the Controller of Her Majesty's Stationery Office © Crown Copyright. Unauthorised reproduction infringes Crown copyright and may lead to prosecution or civil proceedings. East Sussex County Council



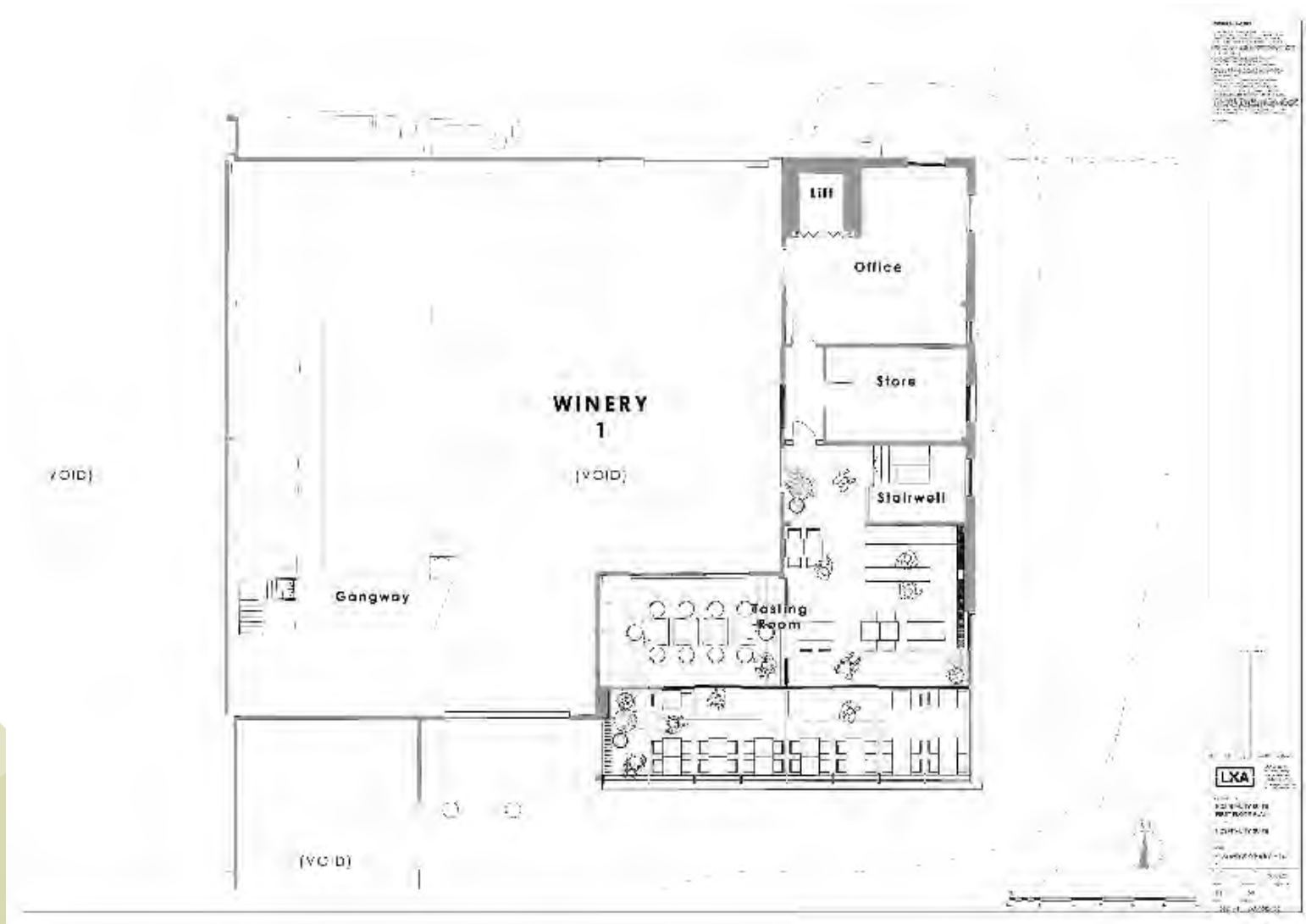
Hospitality Suite Elevations



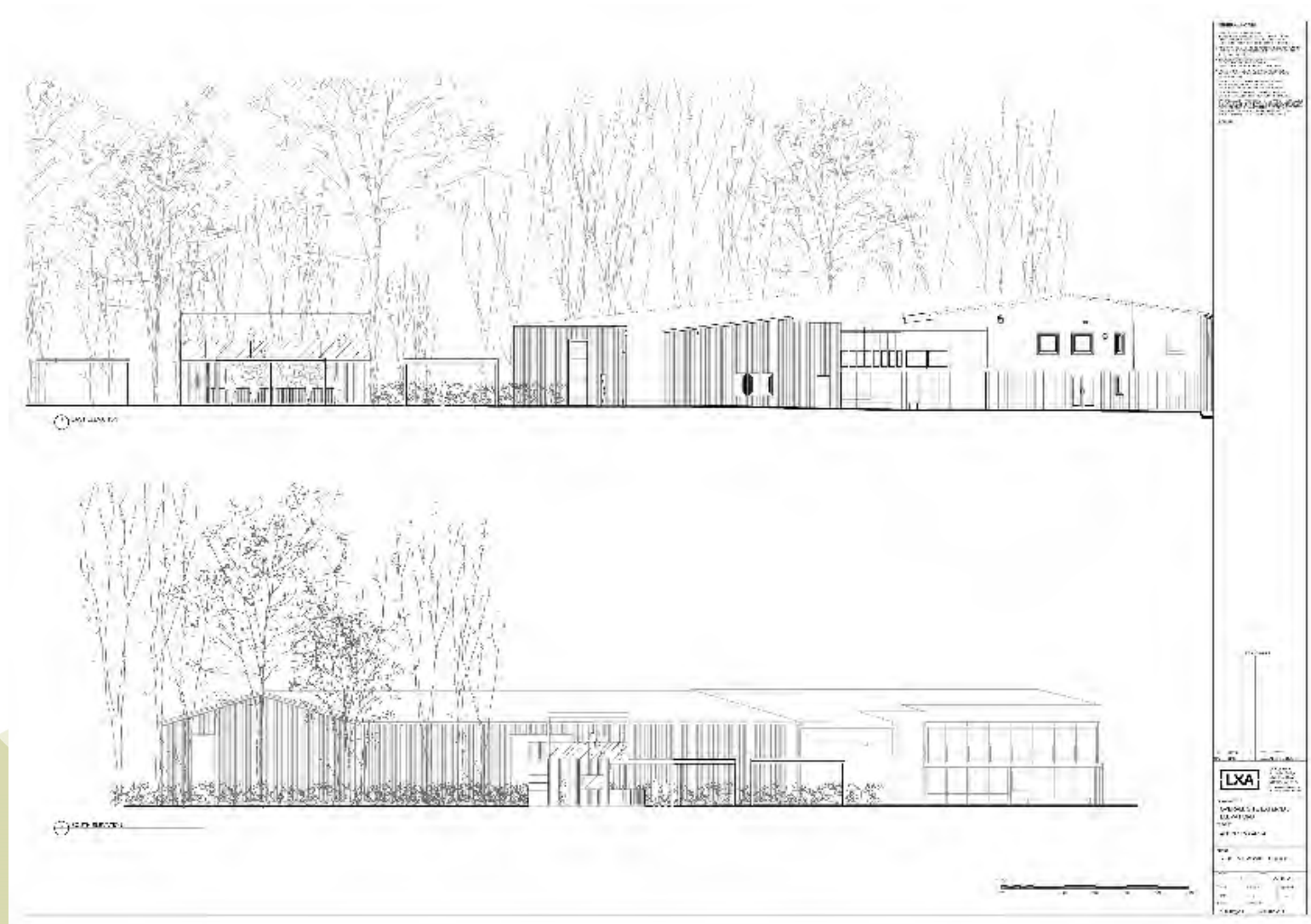
Hospitality Suite Ground Floor Plan



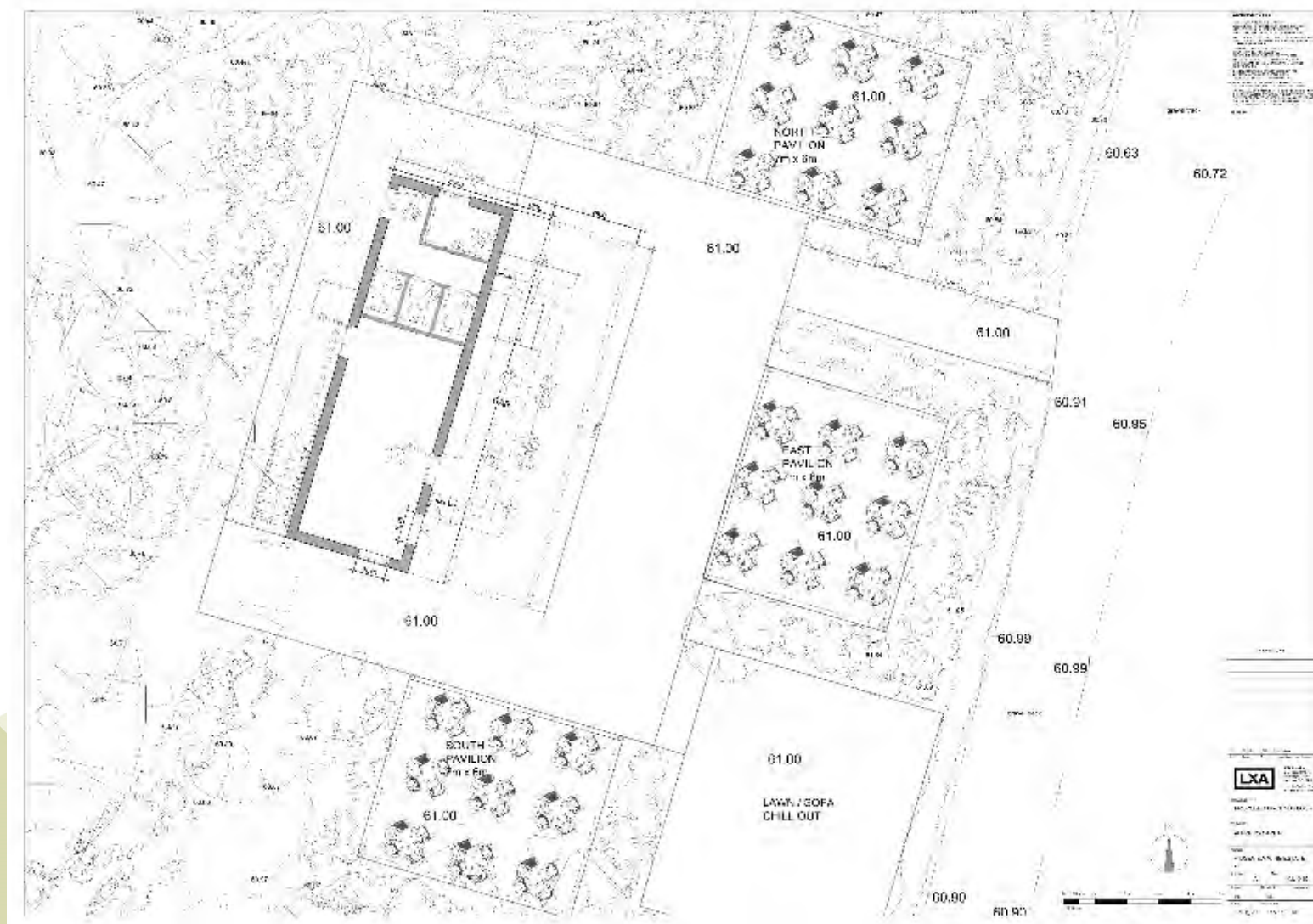
Hospitality Suite First Floor Plan



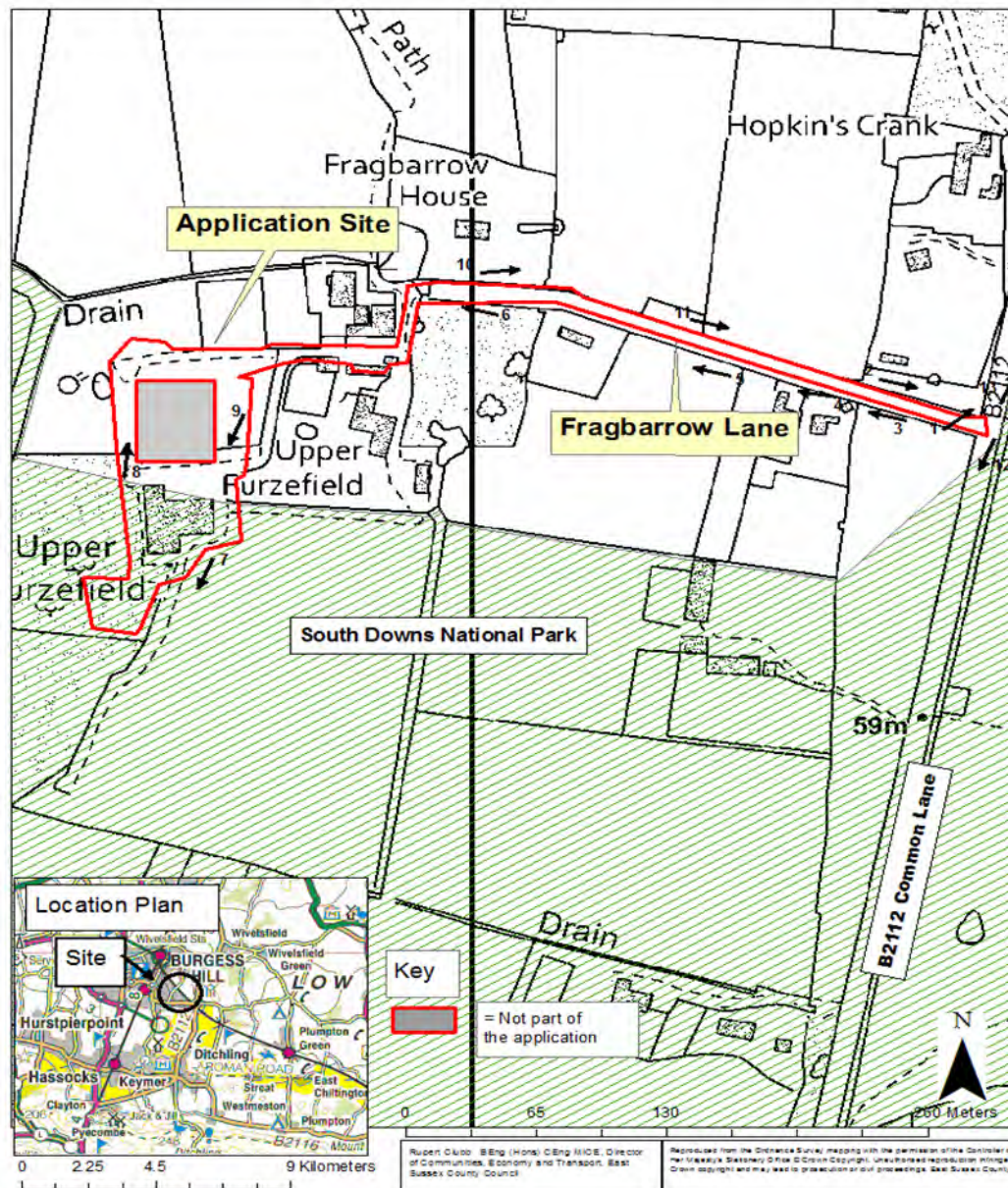
Overall External Elevations



Ground Floor Plan



ESCC/2020/002/CB - Viewpoints for Photographs
Ridgeview Wine Estate, Fragbarrow Lane, Ditchling Common



1. North side of junction of Fragarbarrow Lane (access) with Common Lane (B2112).



2. Junction of access with B2112.



3. View west along access.



4. Looking west along access.



5. Looking further west along access with passing bay on left.



6. View west along access approaching Estate.



7. View south-west across 'alfresco' area.



8. View north across Estate from north side of Winery 1 building.



9. View south across visitor's car park towards Winery 1 building.



10. View east showing bend in access.



11. View east along access.



12. Junction of access looking south along B2112.



13. Junction of access looking north along B2112.



ESCC/2020/002/CB

Cross Border Application - New hospitality suite within the existing winery and the creation of a new alfresco area with associated landscaping.

Ridgeway Wine Estate, Fragbarrow Lane, Ditchling Common, BN6 8TP (Cross border application) for Ridgeway Vine Estate.

East Sussex County Council Planning Committee 16 February 2022