

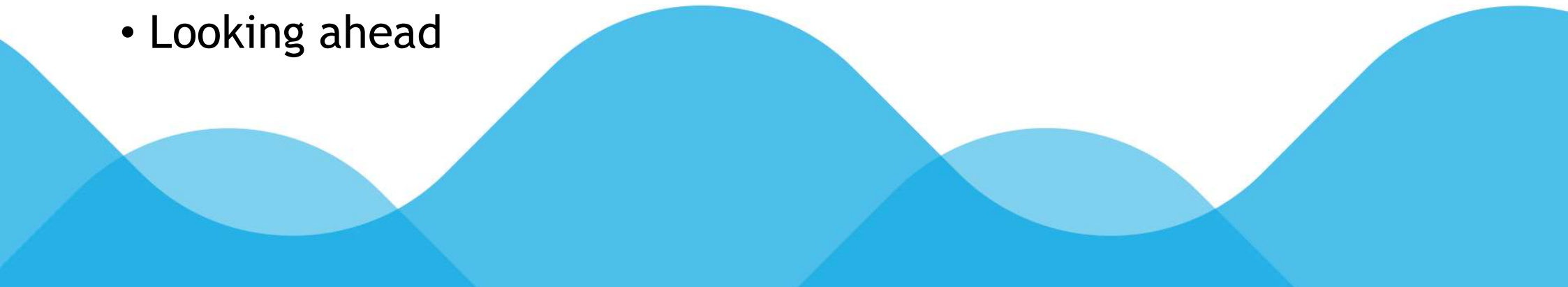
Scrutiny Briefing - Personal Assistants (PAs)

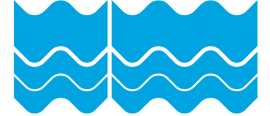
Welcome

Today's session will cover:

- An overview of the role of Personal Assistants (PAs)
- Support with Confidence (SWC)
- Looking ahead

*“PAs do a fantastic job,
a lifeline to families...”*





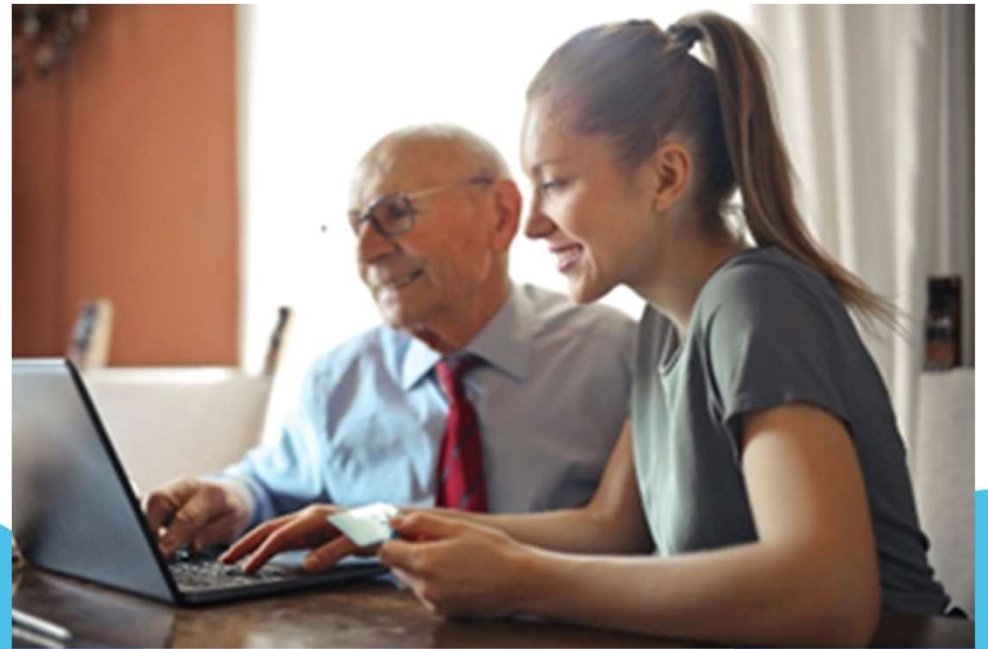
The role of Personal Assistants (PAs)

- PAs are an option to support people to live a full and independent life, alongside HomeCare and Day Opportunities
- Flexible support for a range of needs
- PAs can be employed directly by clients or self-employed and may support one person or several clients



What does the Council do?

- Statutory assessments of people's needs and develops a support plan with them
- Administers direct payments to clients, which are used to pay PAs
- SWC Scheme
- Free PA training programme
- Commissions Direct Payments Support Services



PAs in East Sussex

- 1,515 people receive a direct payment - most will employ a PA
- 278 accredited SWC PAs who are mostly self-employed
- Clients are supported by employed and self-employed PAs



Support with Confidence (SWC)

Delivered in partnership between Adult Social Care and Trading Standards

National brand - operates in 7 local authorities and expanding

330 SWC scheme members (278 PAs and 52 business members) in East Sussex

70 applications going through the accreditation process

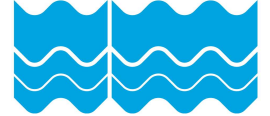
Aims:

- Upskill and improve services
- Accredit care and support providers
- Online directory
- Provide clients with choice
- To help develop and support local ASC providers

Support with Confidence (SWC)

- Maintaining independence
- Person centred
- Available to all East Sussex residents
- Providers are vetted to ensure a good quality service
- Minimising risk to the public
- Increase consumer choice and protection
- Provides trading, business advice and support

“5 out of my 6 clients families found me on the Support with Confidence site, and I feel it gives them comfort knowing they can trust the person caring for their parents/relatives.”



Direct Payment Support Service

- People pay PAs using their direct payments
- The Council commissions 2 direct payments support services, which support around 500 people who employ PAs
- Support for employers can include recruiting PAs and carrying out pre-employment checks, payroll and providing ongoing advice and guidance to employers
- Re-commissioned services will launch in April 2024



Looking Ahead

- Building resilience
- SWC
- Direct Payment Support Service - focusing on recruitment
- Recommissioning Direct Payment Support Services

