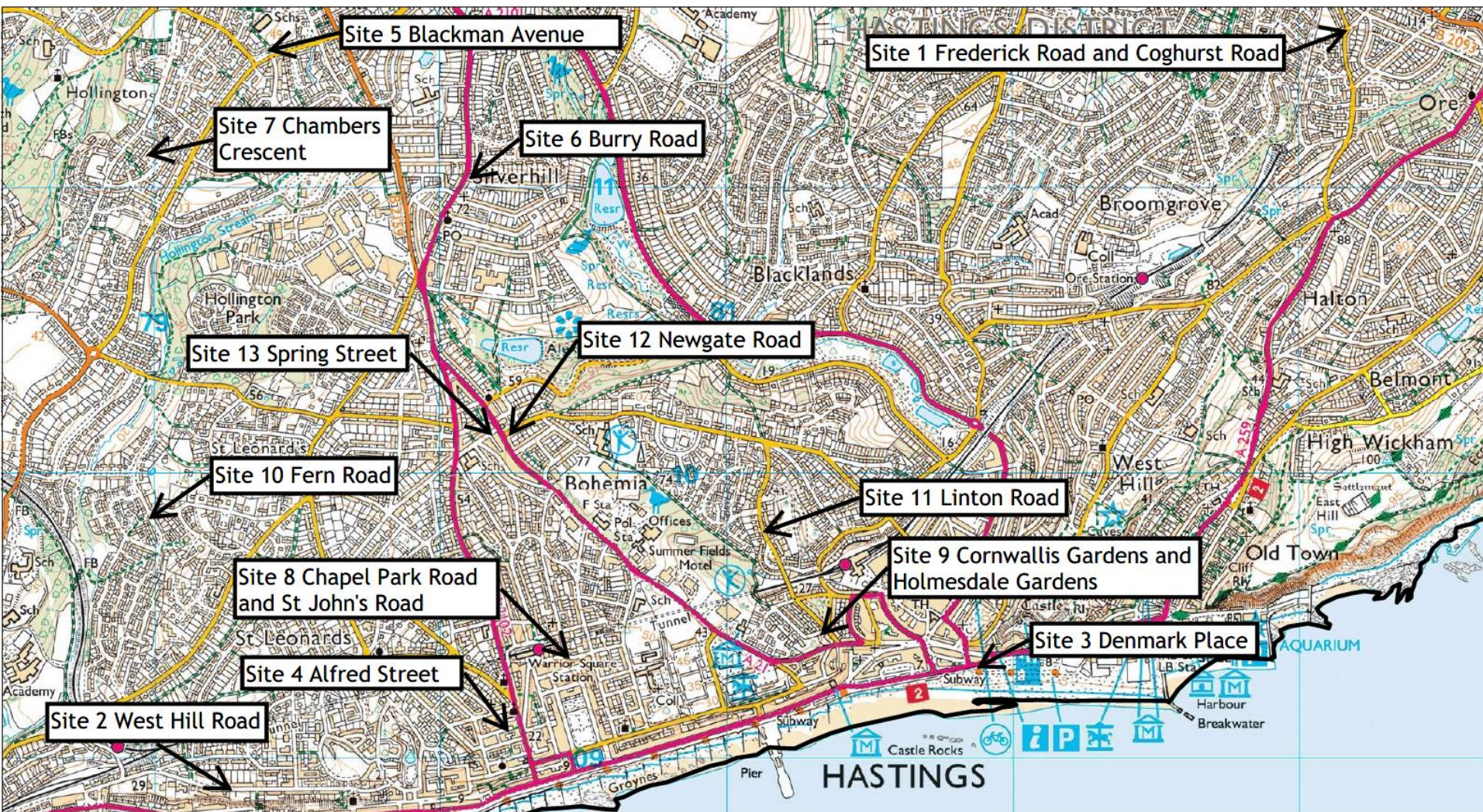


# East Sussex County Council Planning Committee 19 February 2025

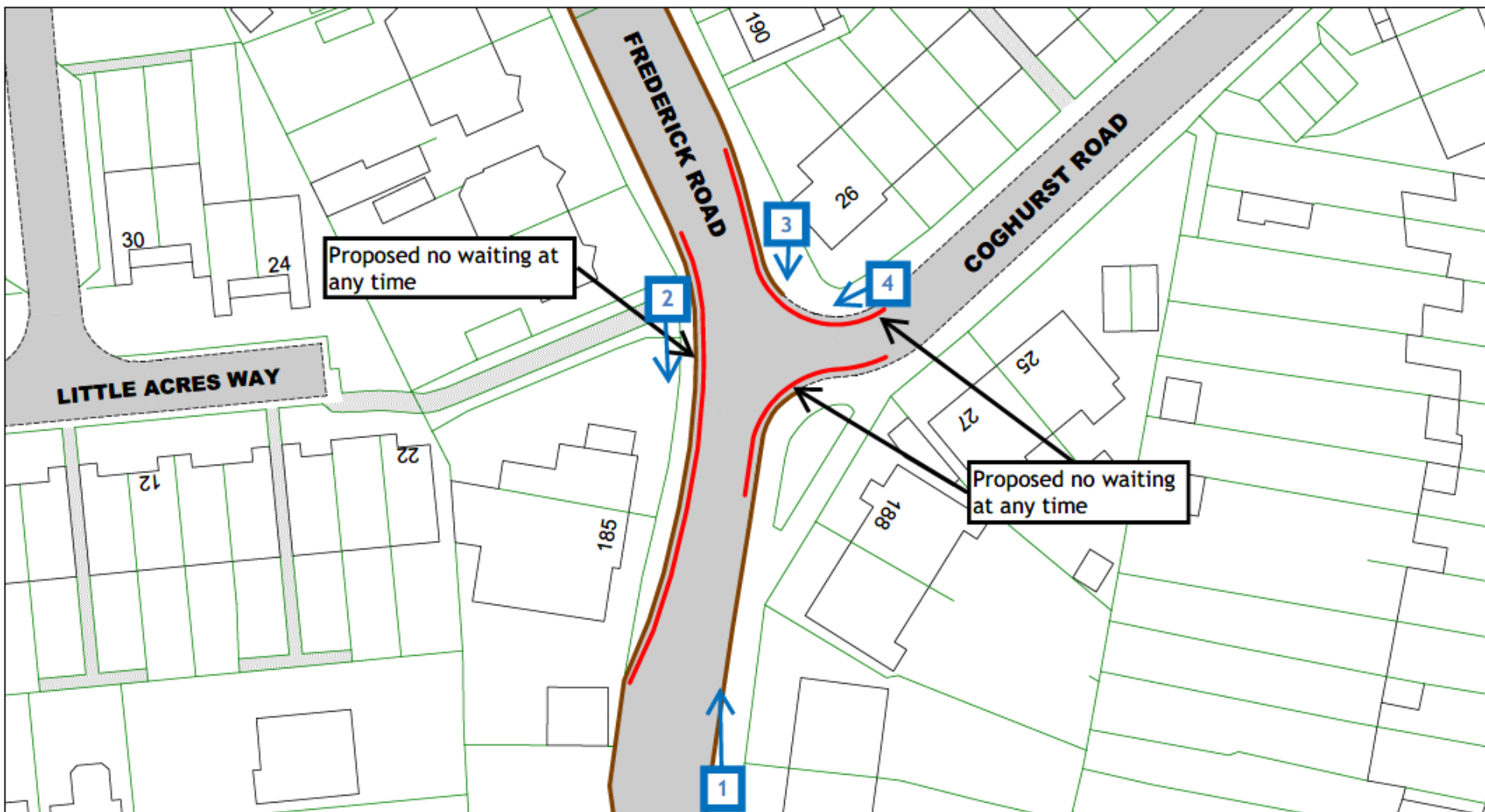
# Traffic Regulation Order: Hastings Parking Review 2

Objections received to changes to parking and waiting restrictions proposed during the latest parking review in Hastings Borough

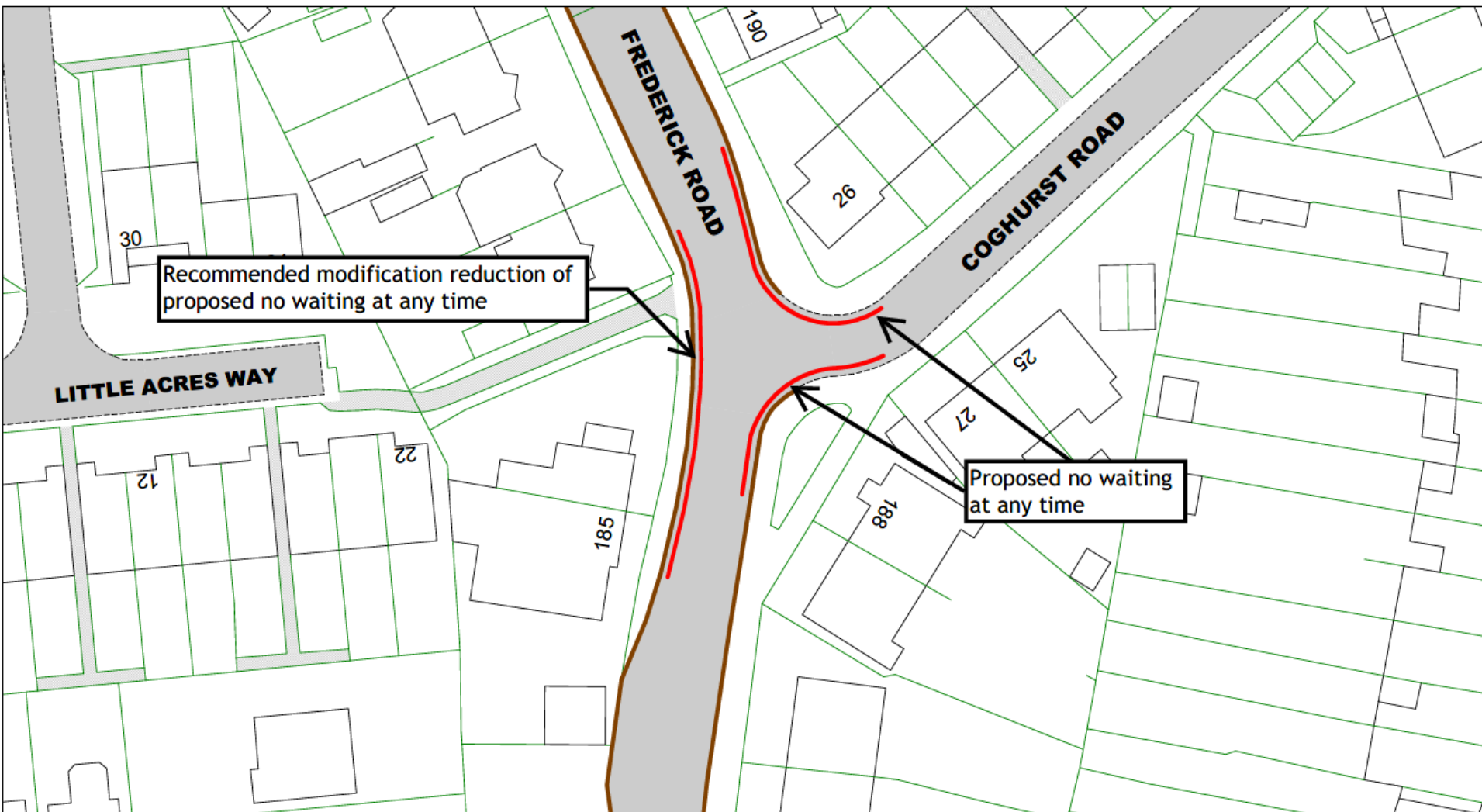
















## View 2 – Looking south along Frederick Road from opposite its junction with Coghurst Road

7





## View 3 – Looking south along Frederick Road from outside no.26 Coghurst Road

8

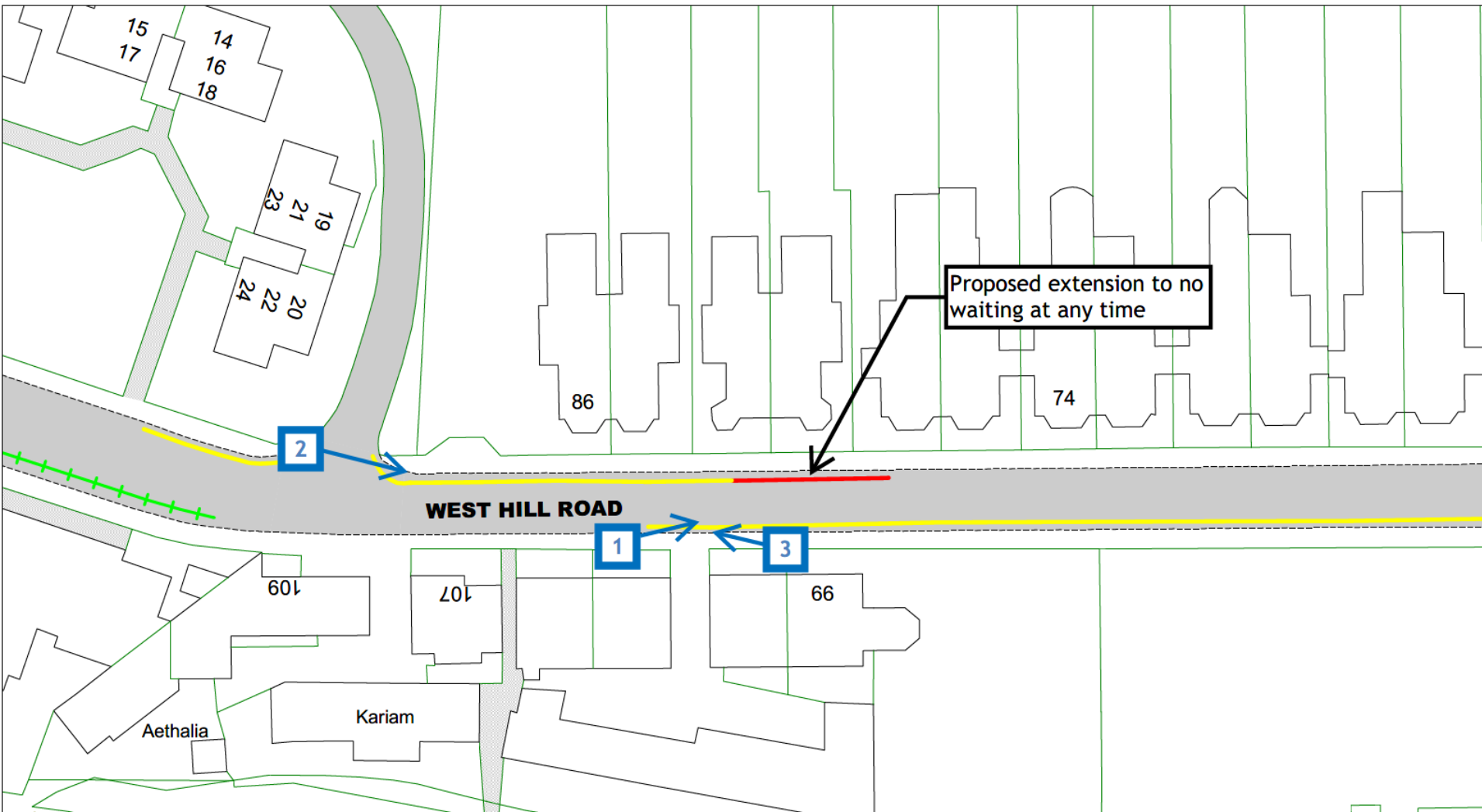




## View 4 – Looking west at Frederick Road from its junction with Coghurst Road

9







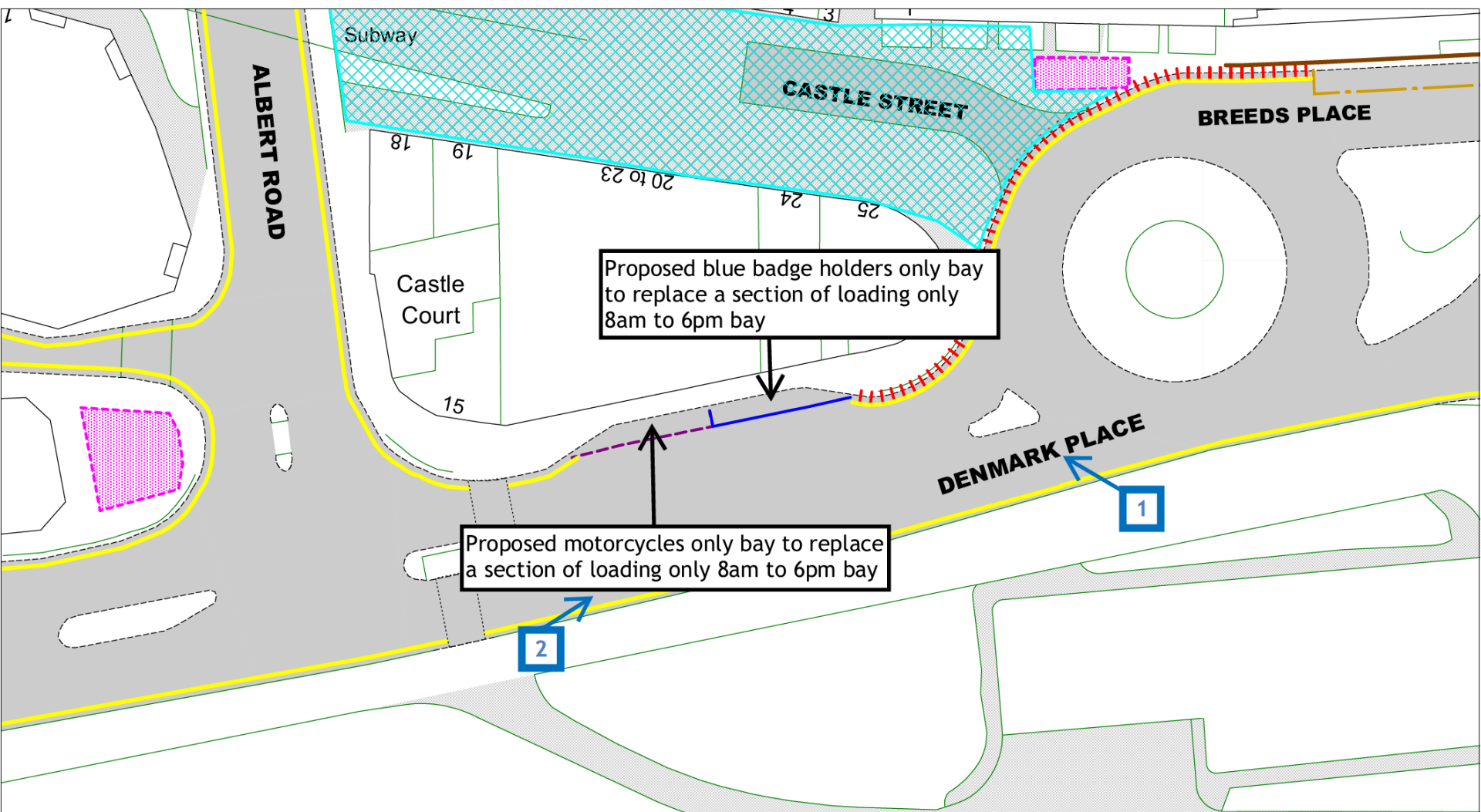












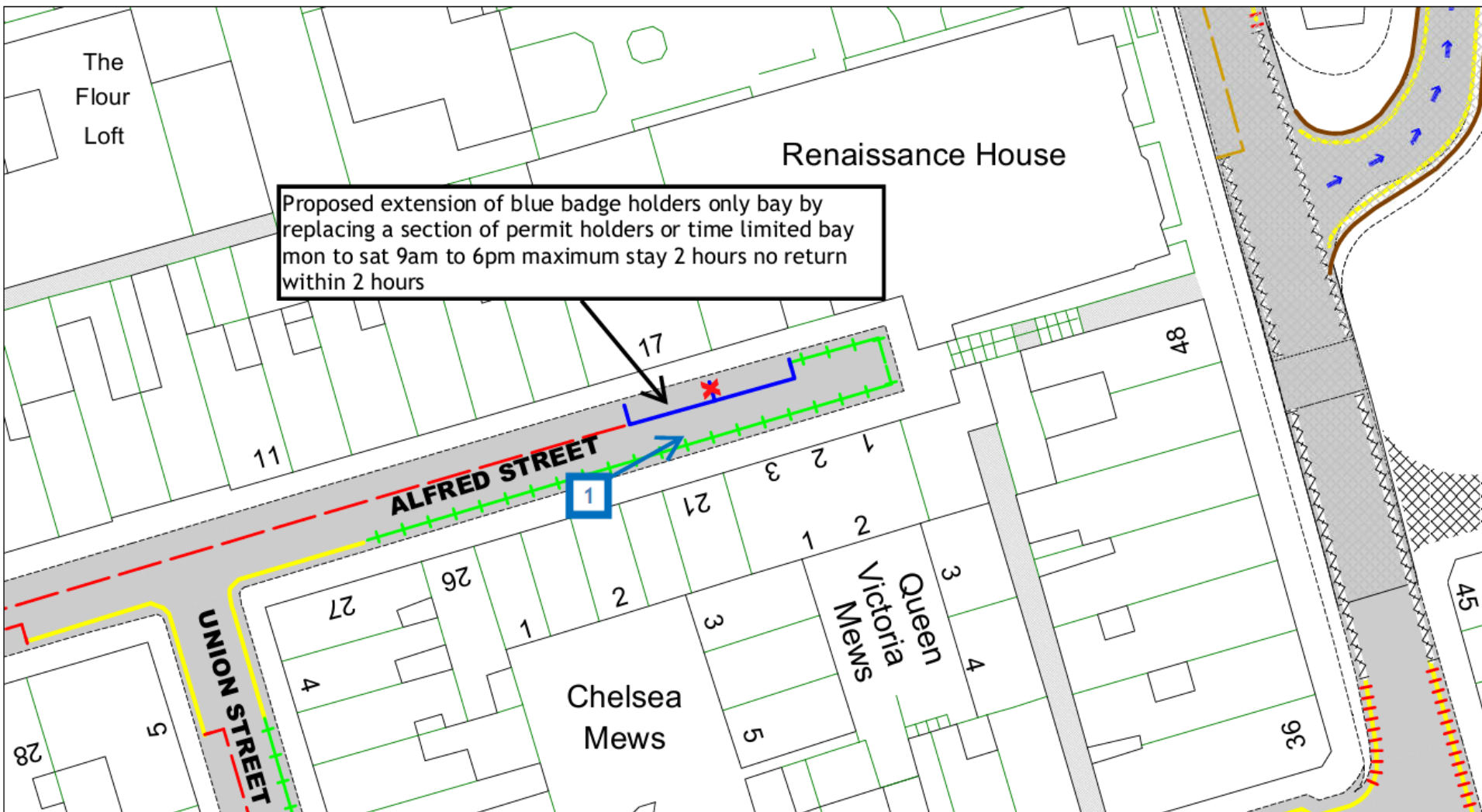








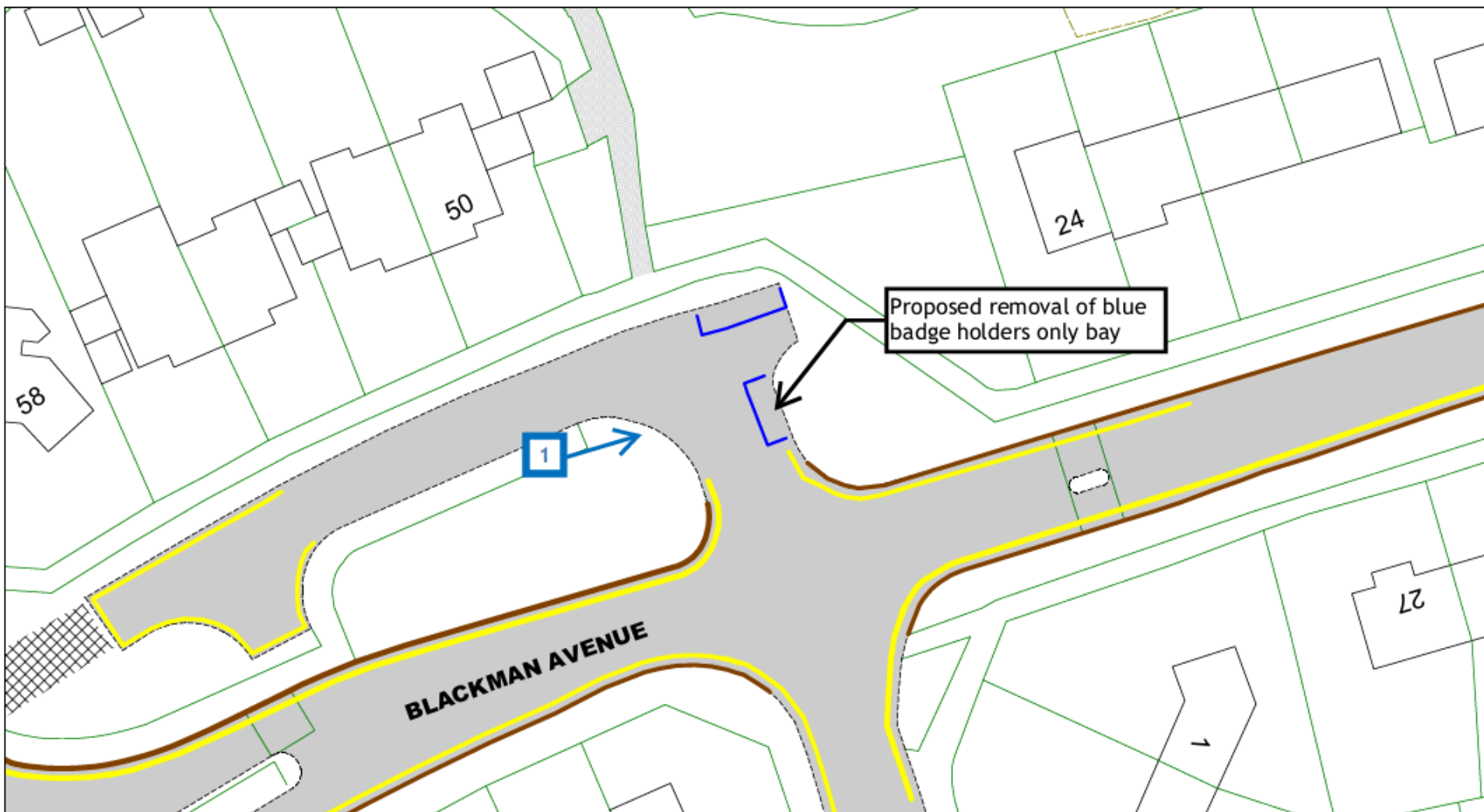








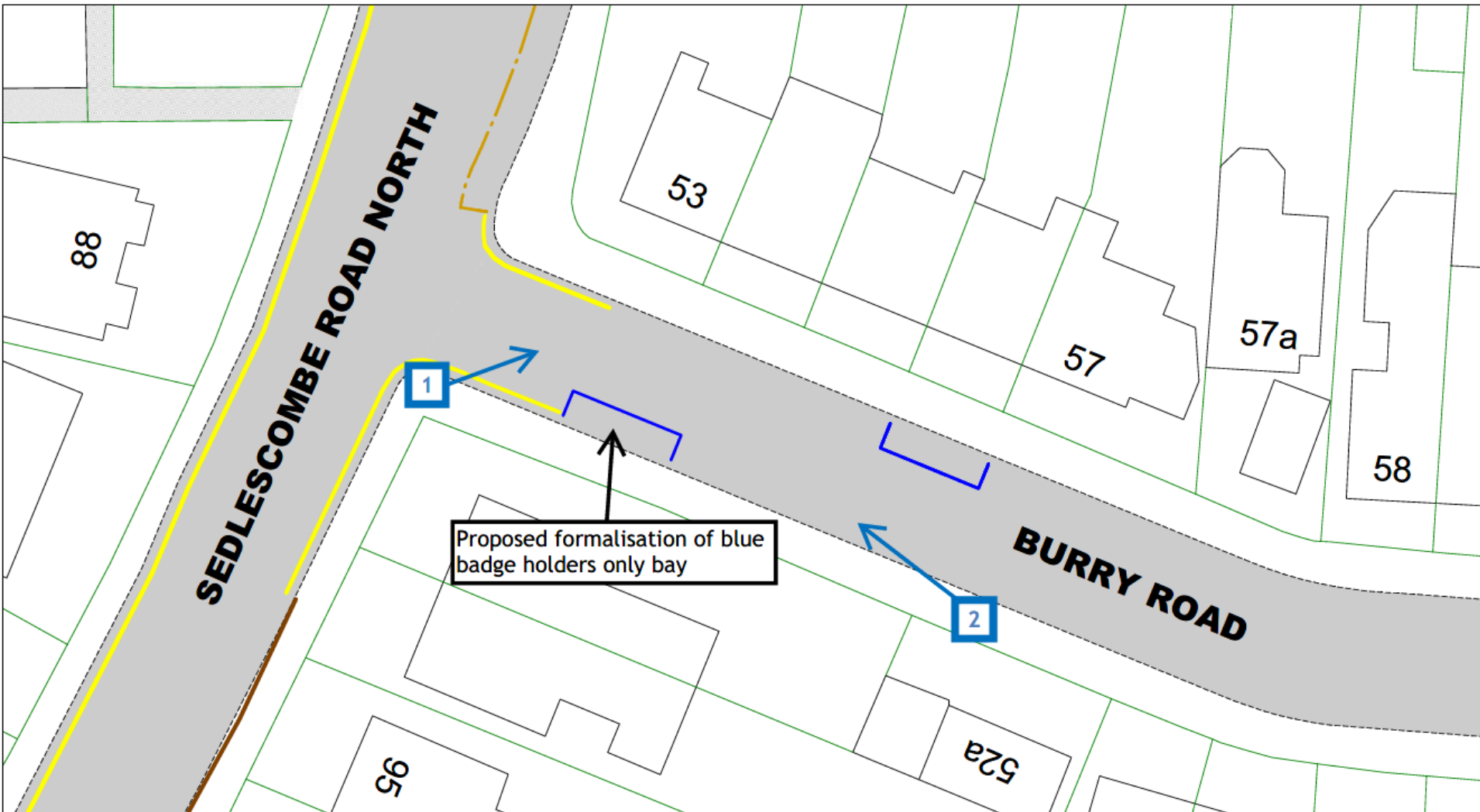














## View 1 – Looking northeast across Burry Road from its junction with Sedlescombe Road North

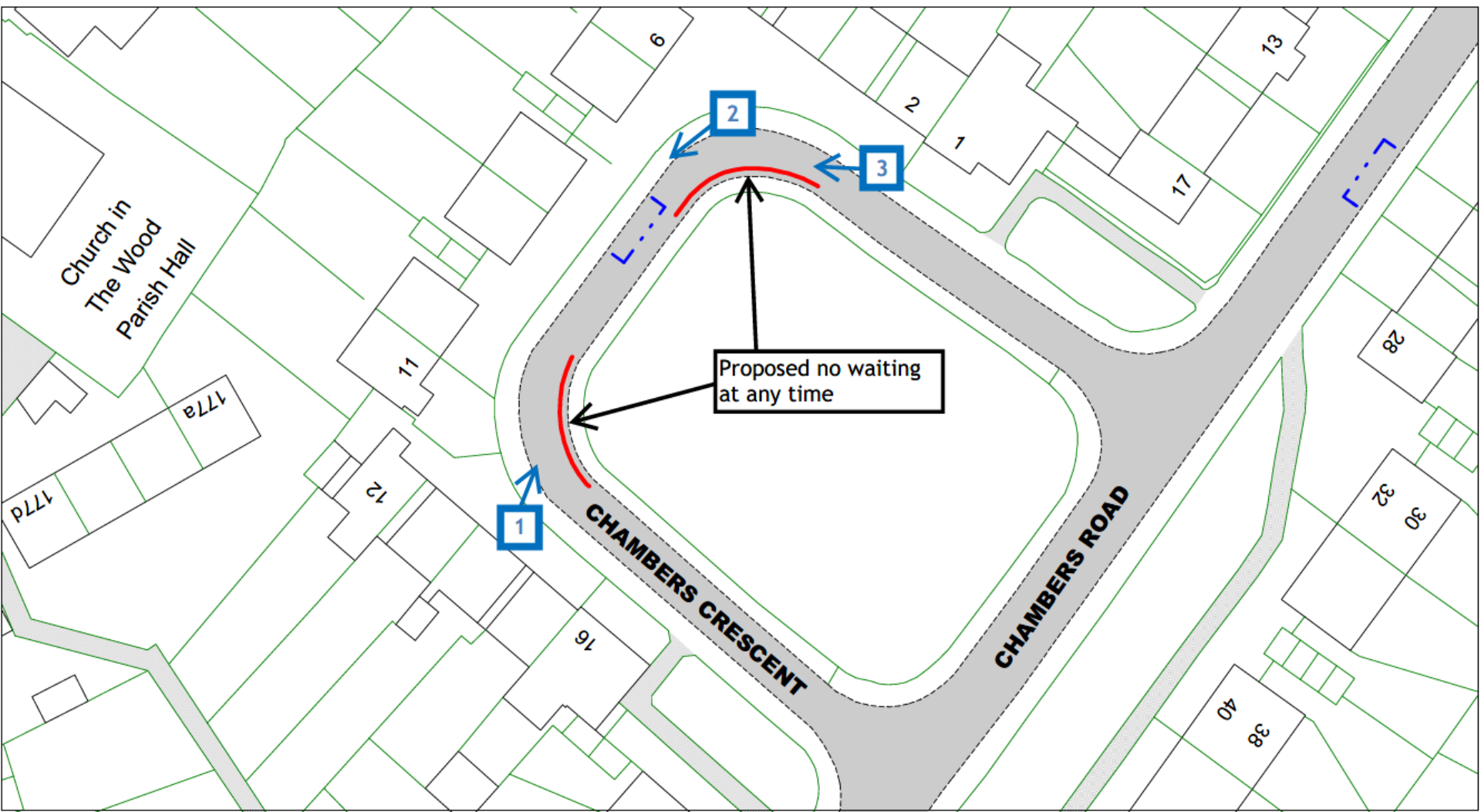
22













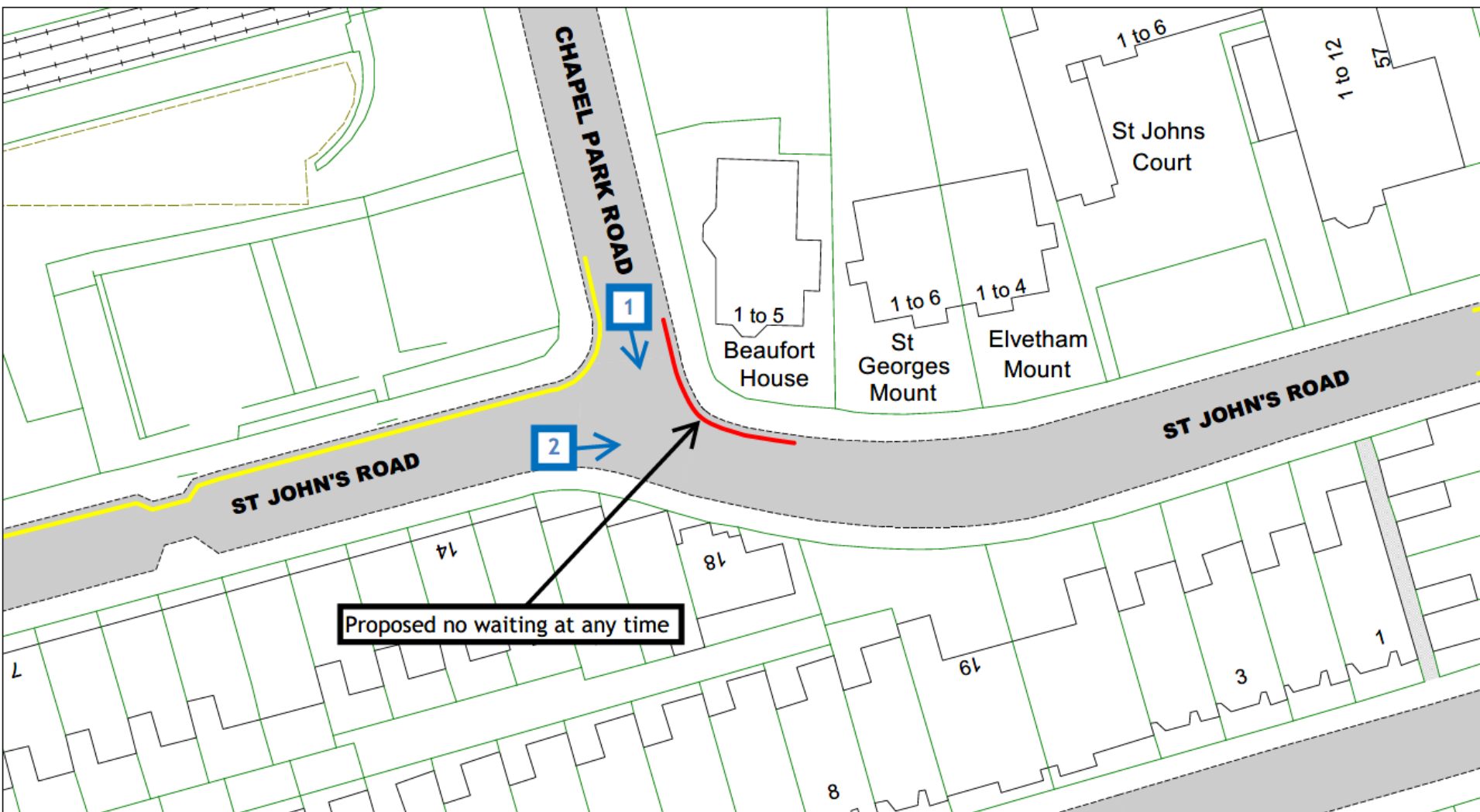












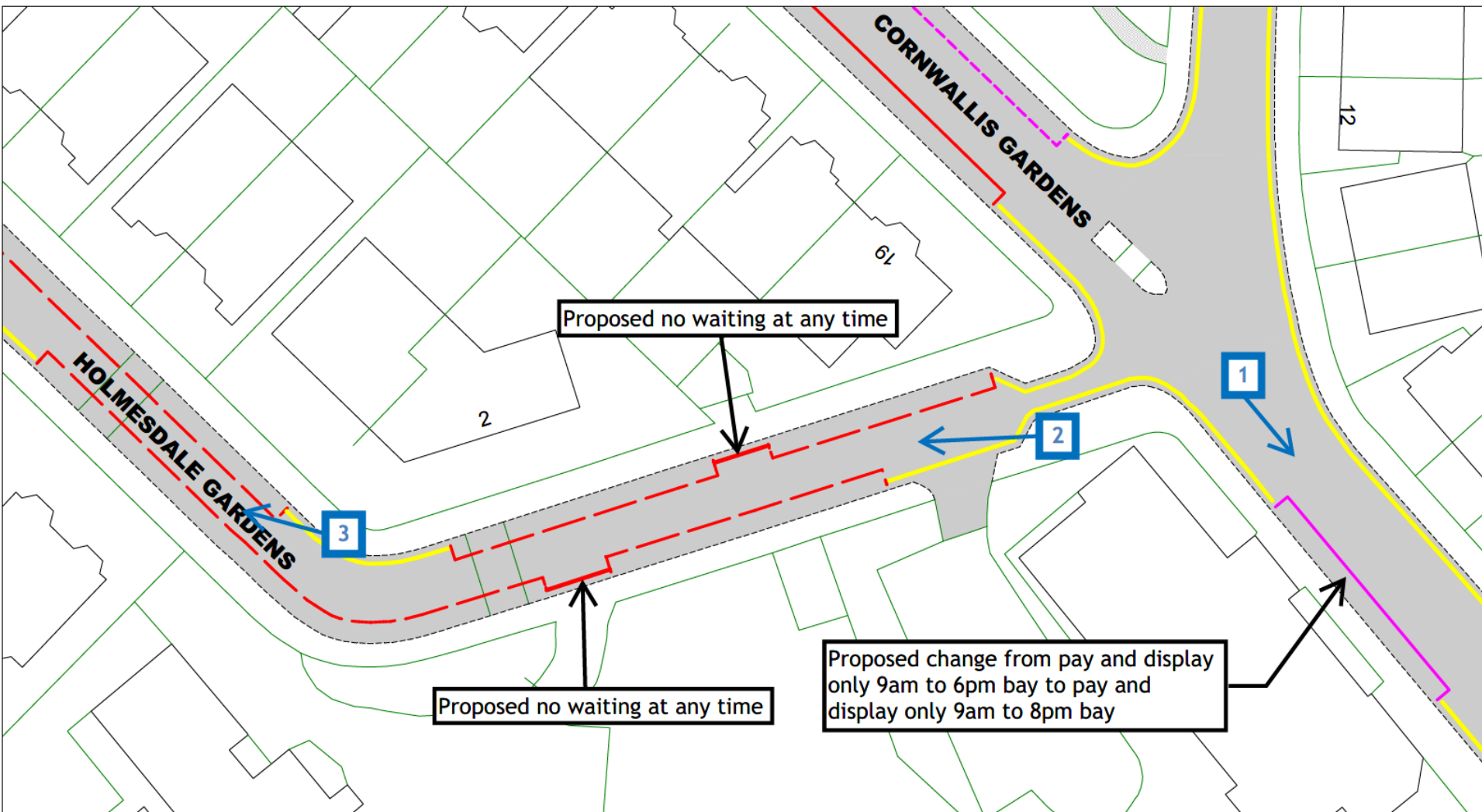














# View 1 – Looking southeast along Cornwallis Gardens at its junction with Cambridge Road

32





## View 2 – Looking west along Holmesdale Gardens from Opposite no.19 Cornwallis Gardens

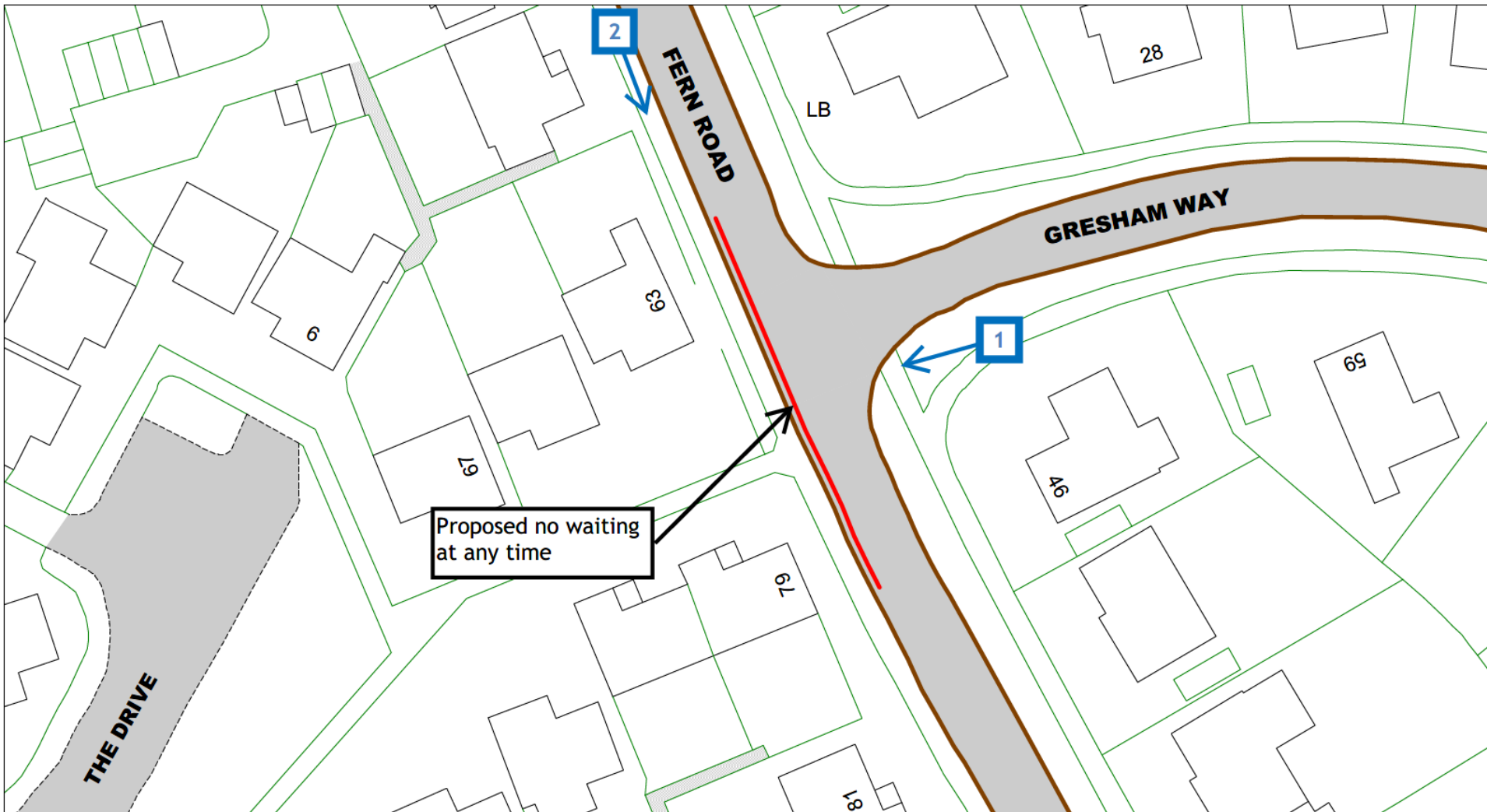
33











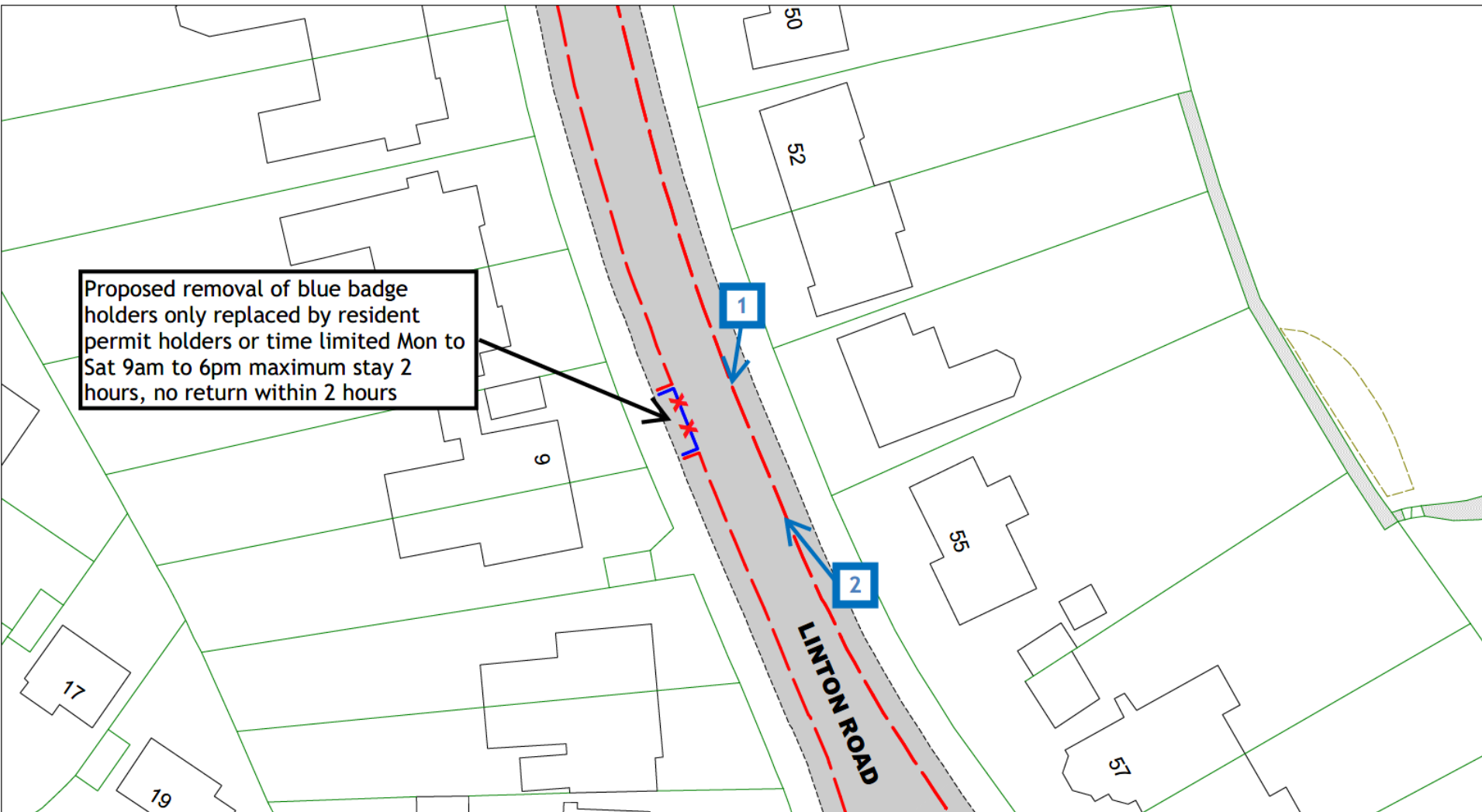












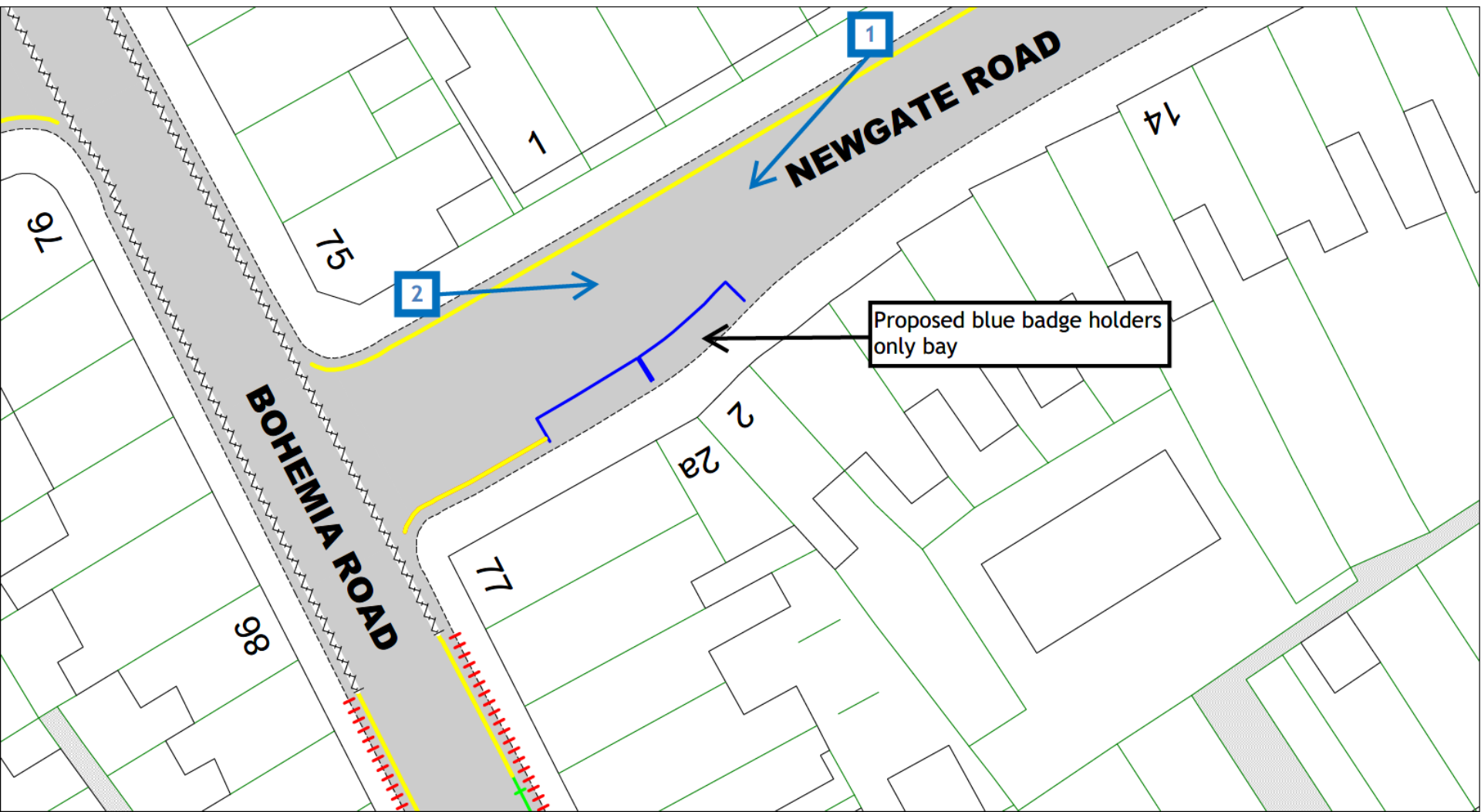












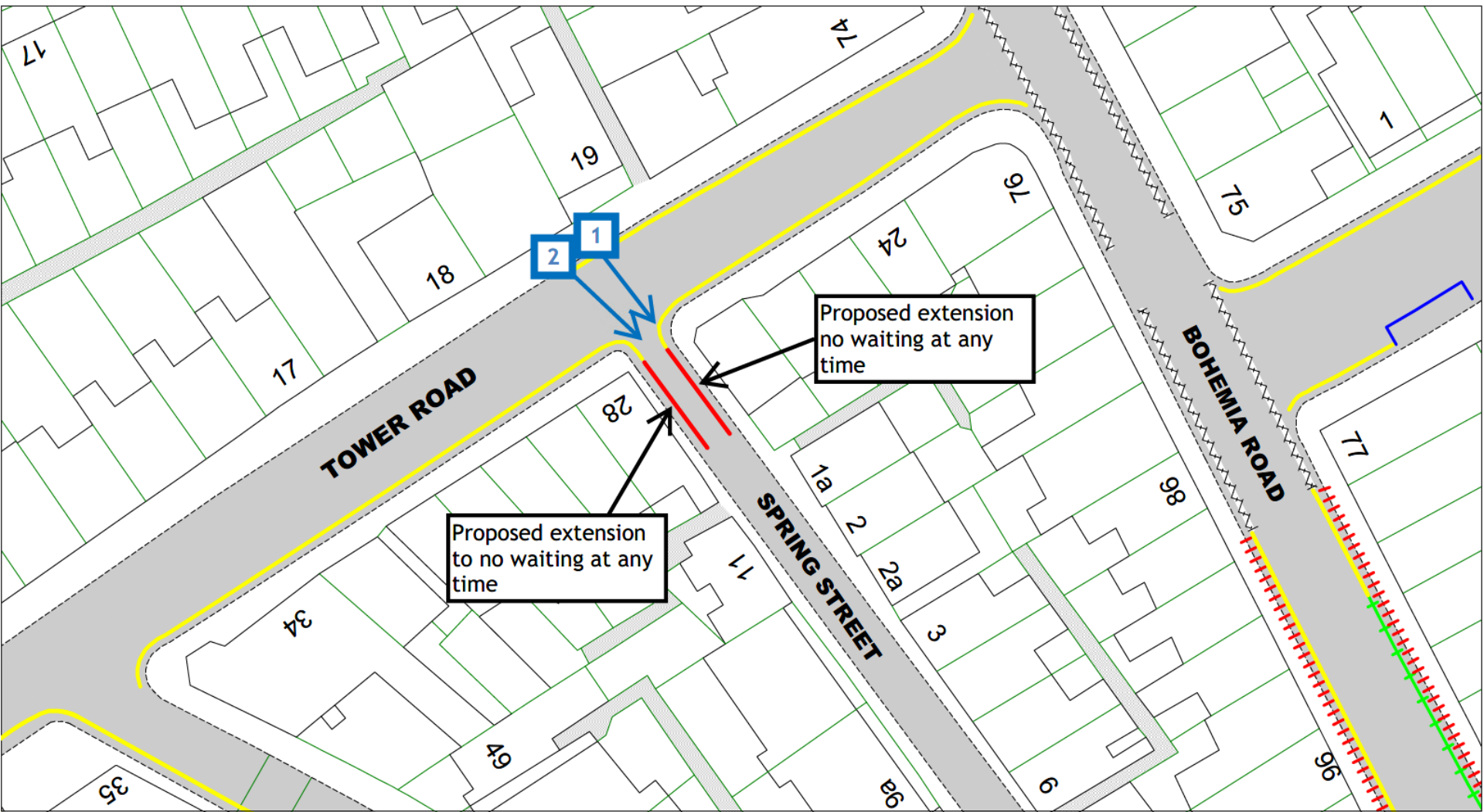


















## View 2 – Looking southeast along Spring Street from its junction with Tower Road

46





# Traffic Regulation Order: Hastings Parking Review 2

Objections received to changes to parking and waiting restrictions proposed during the latest parking review in Hastings Borough



# East Sussex County Council Planning Committee 19 February 2025