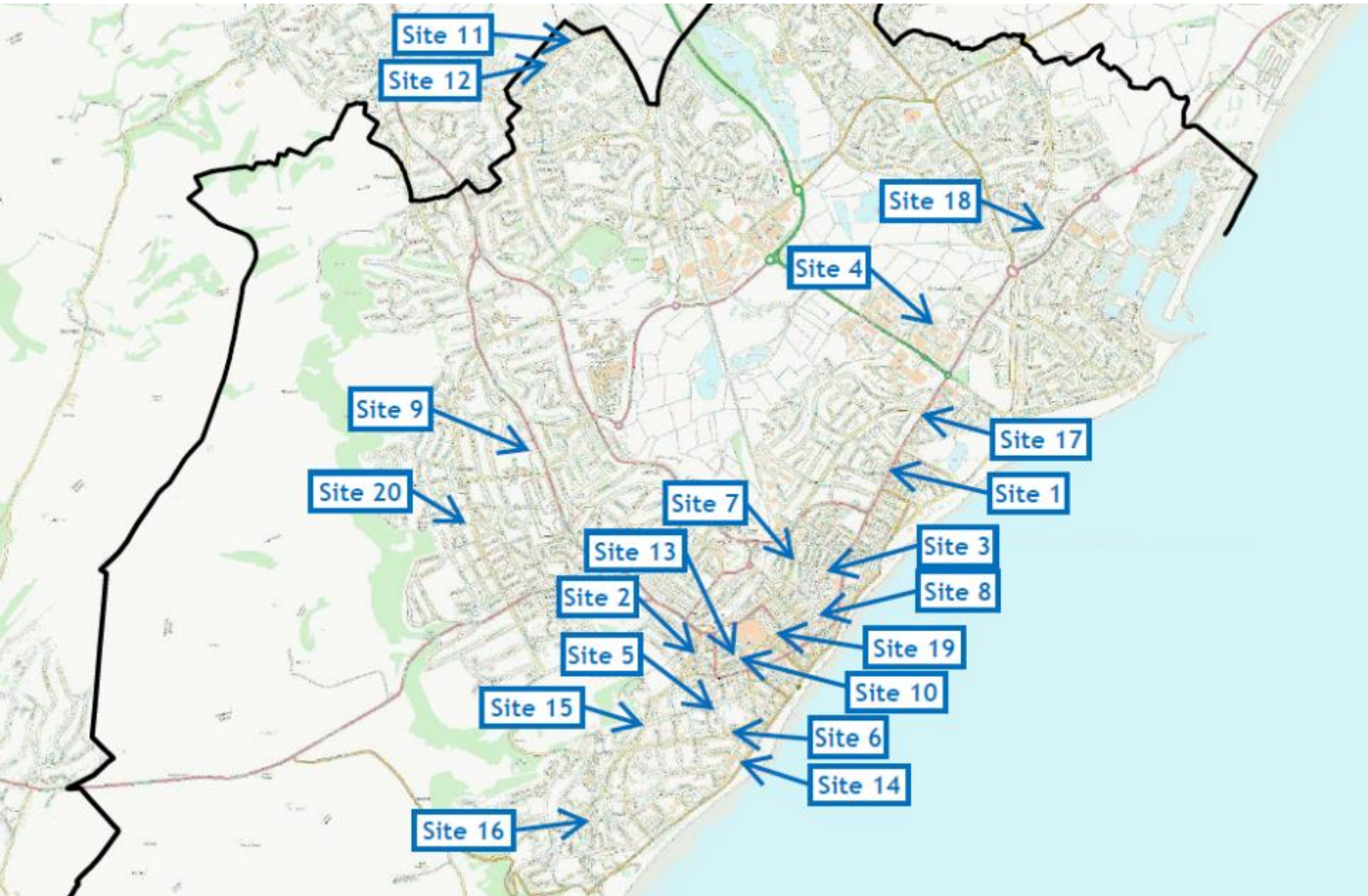
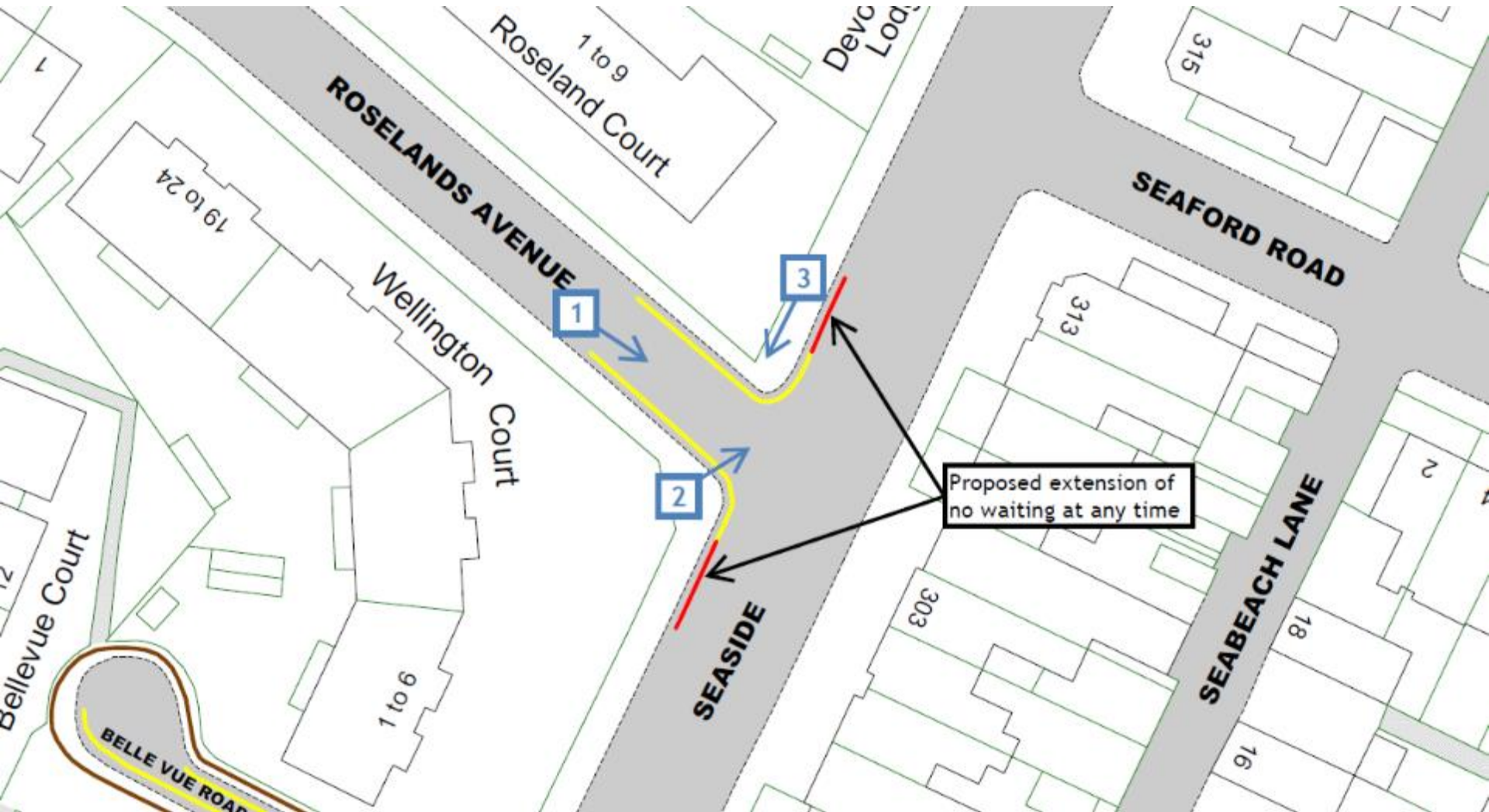


# East Sussex County Council Planning Committee 19 March 2025

# Traffic Regulation Order: Eastbourne Parking Review 2

Objections received to changes to parking and waiting restrictions proposed during the latest parking review in Eastbourne Borough







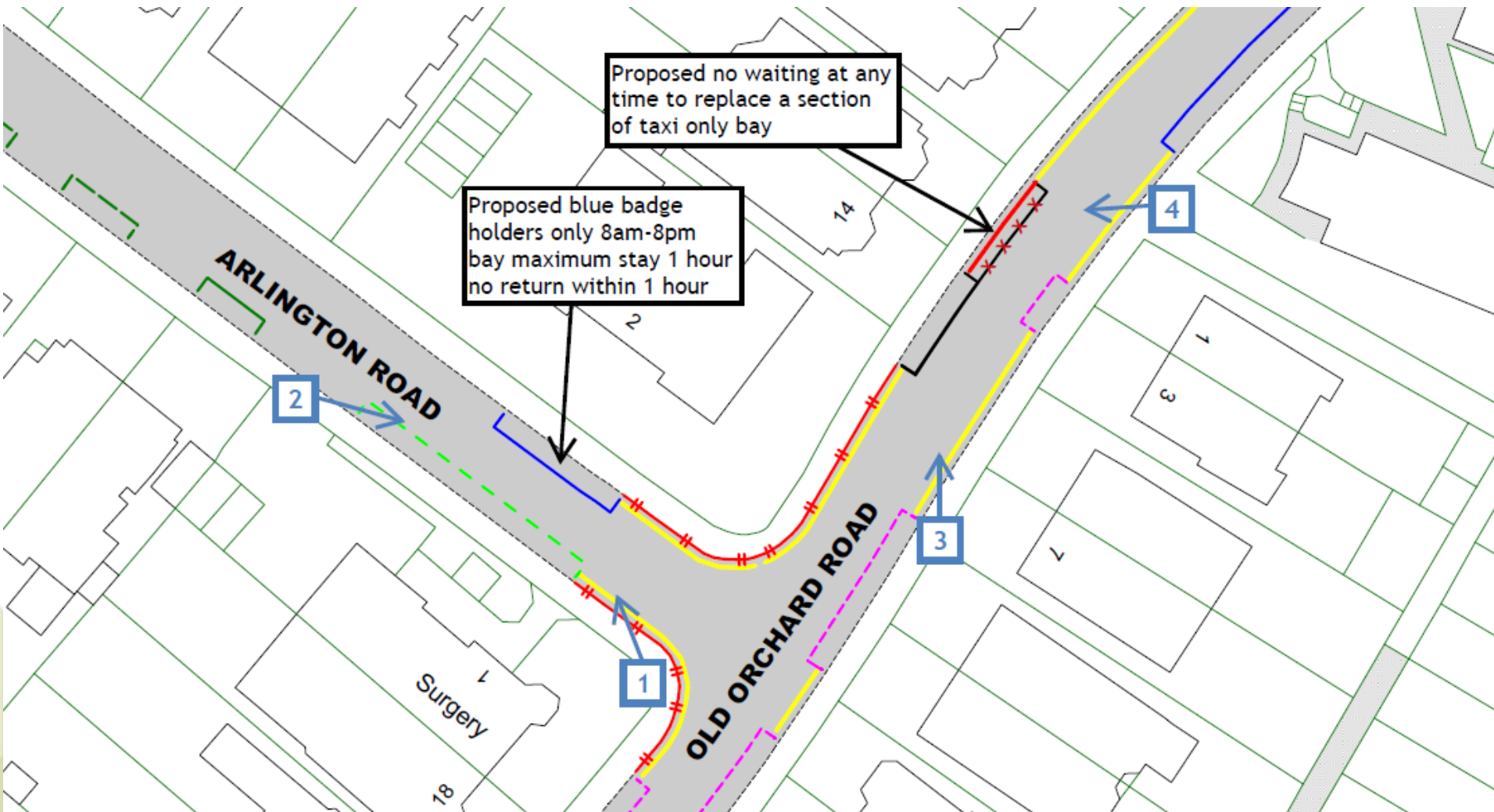
View 1 – Looking south-eastwards along Roselands Avenue from outside Wellington Court













View 1 – Looking north-westwards along Arlington Road from outside 1 Arlington Road









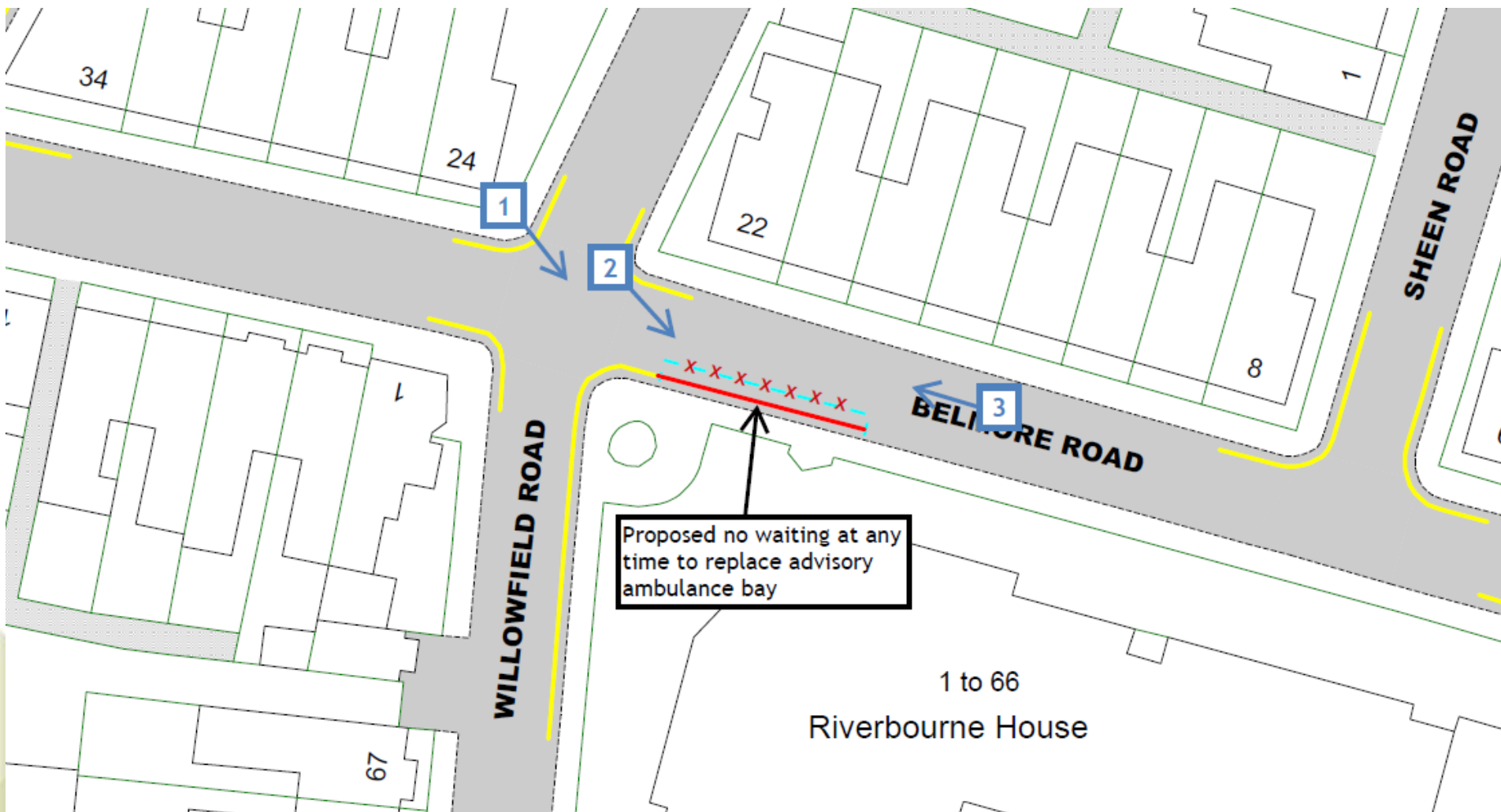




View 4 – Looking south-westwards onto Old Orchard Road from an access between 1 Old Orchard Road and Eastbourne Library









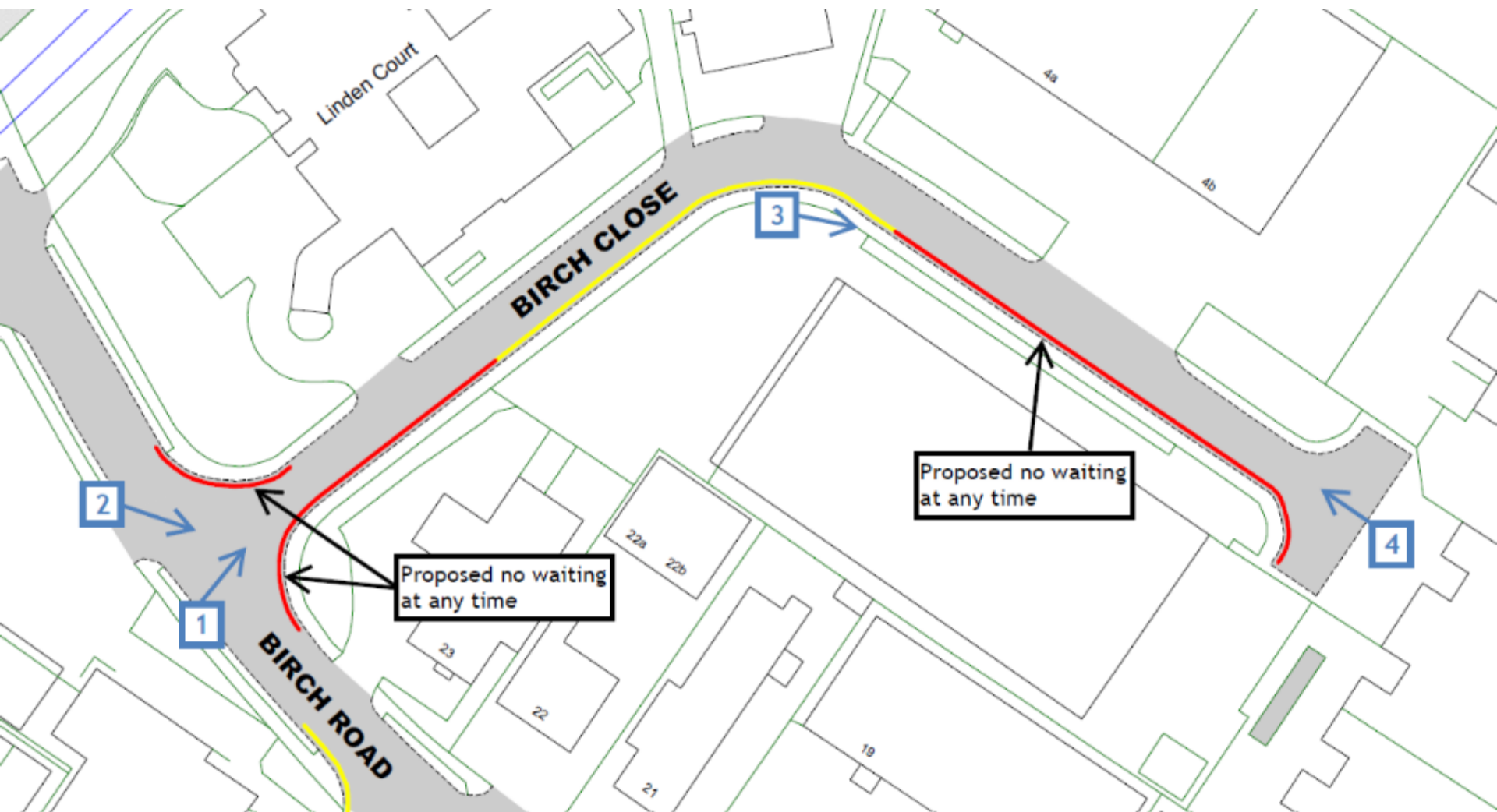












View 1 – Looking north-eastwards along Birch Close from opposite the southern side of its junction with Birch Road





View 2 – Looking eastwards across the junction of Birch Close and Birch Road from opposite the northern side of the junction





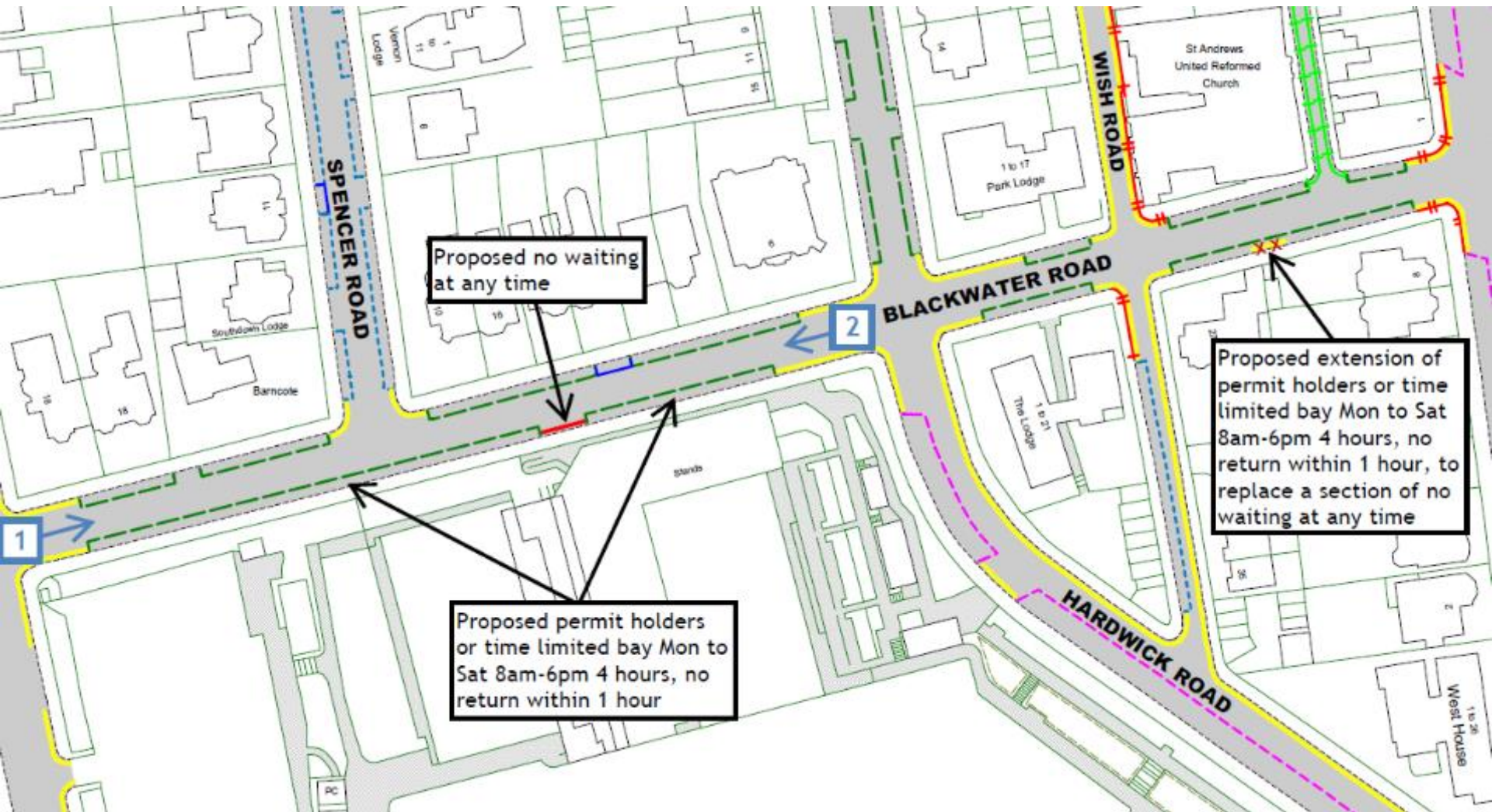
View 3 – Looking eastwards along Birch Close from the corner opposite Lindon Court





View 4 – Looking north-westwards along Birch Close from the turning head its eastern end



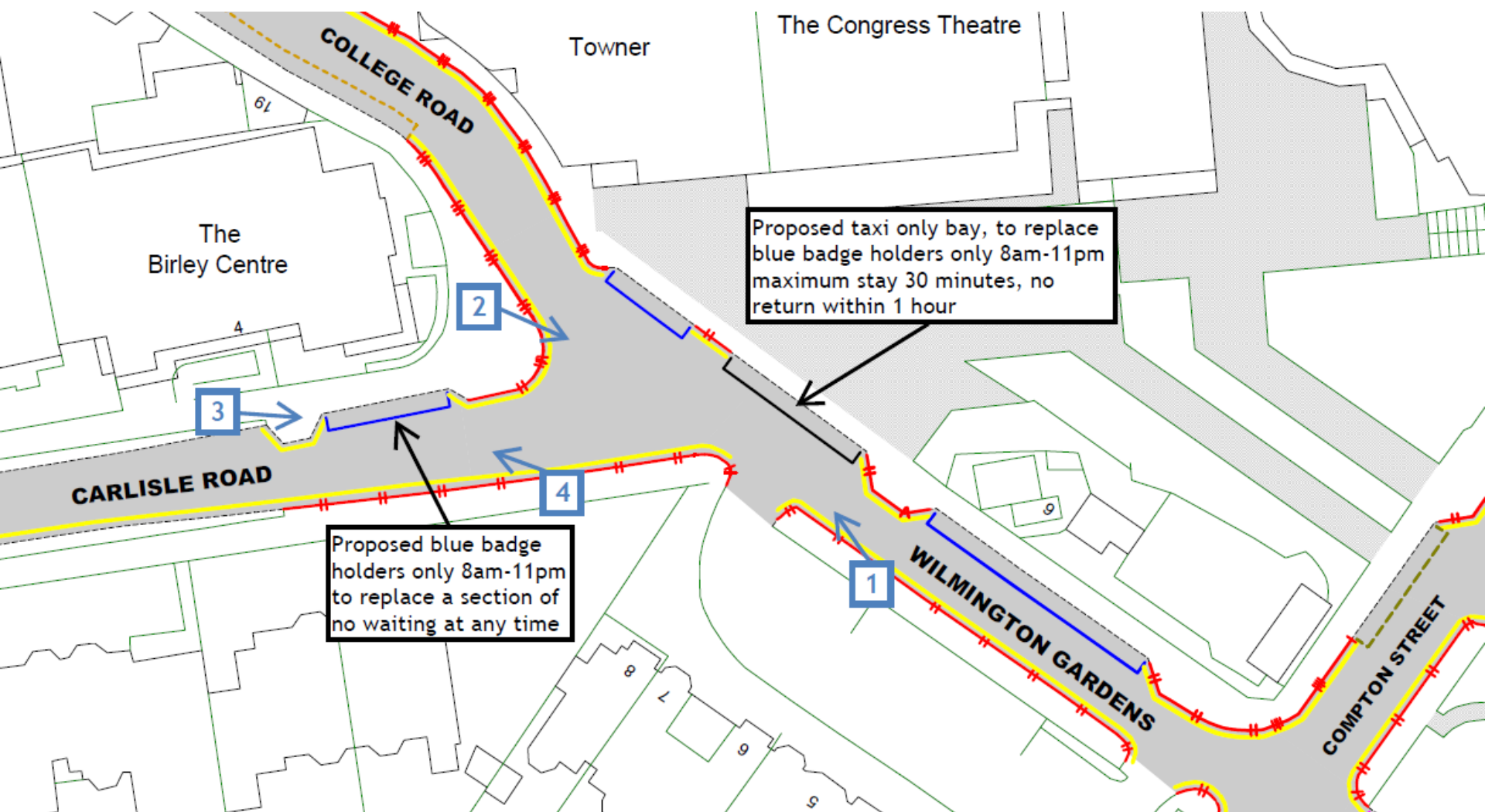












View 1 – Looking north-westwards across Wilmington Gardens  
from outside 6 Wilmington Gardens





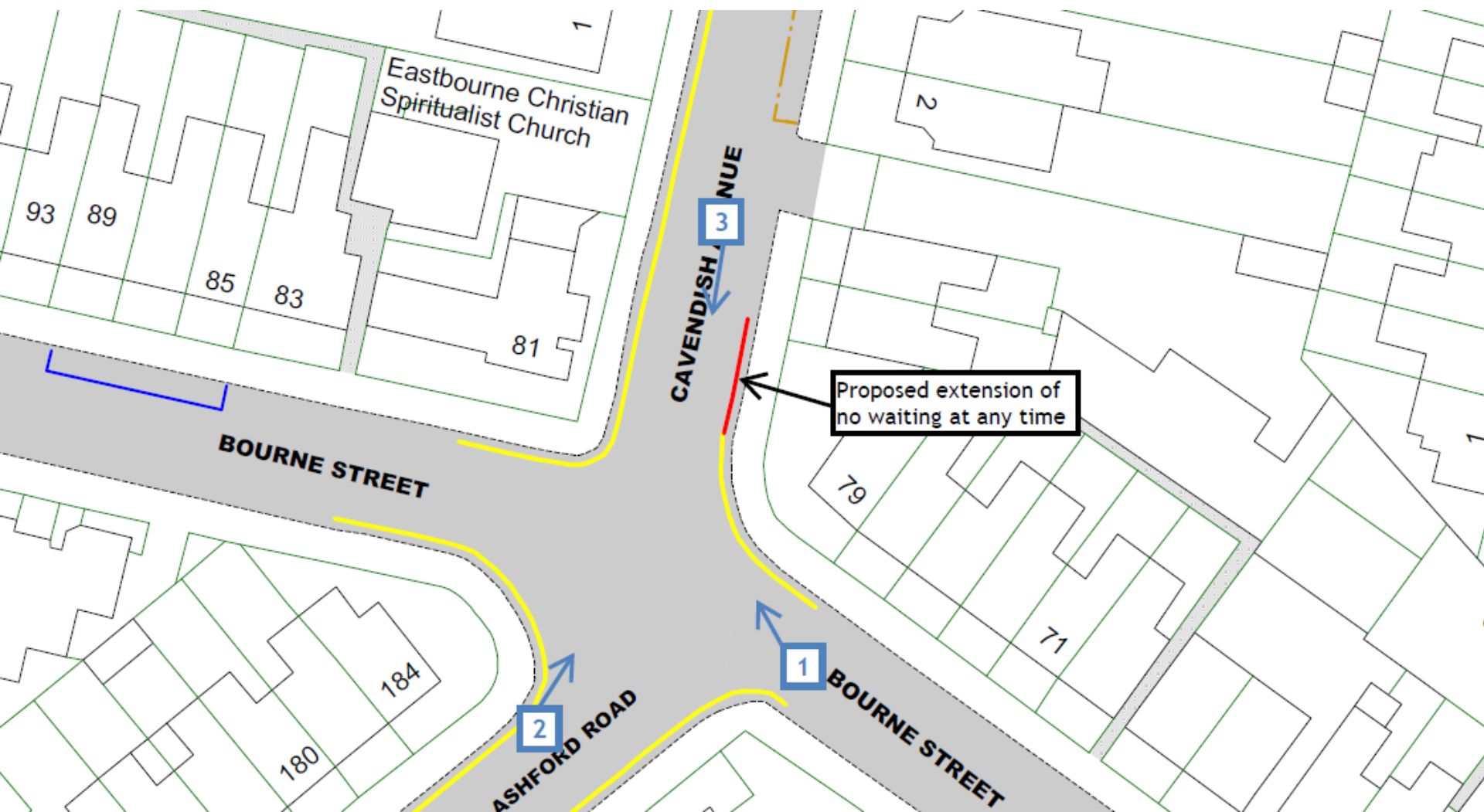














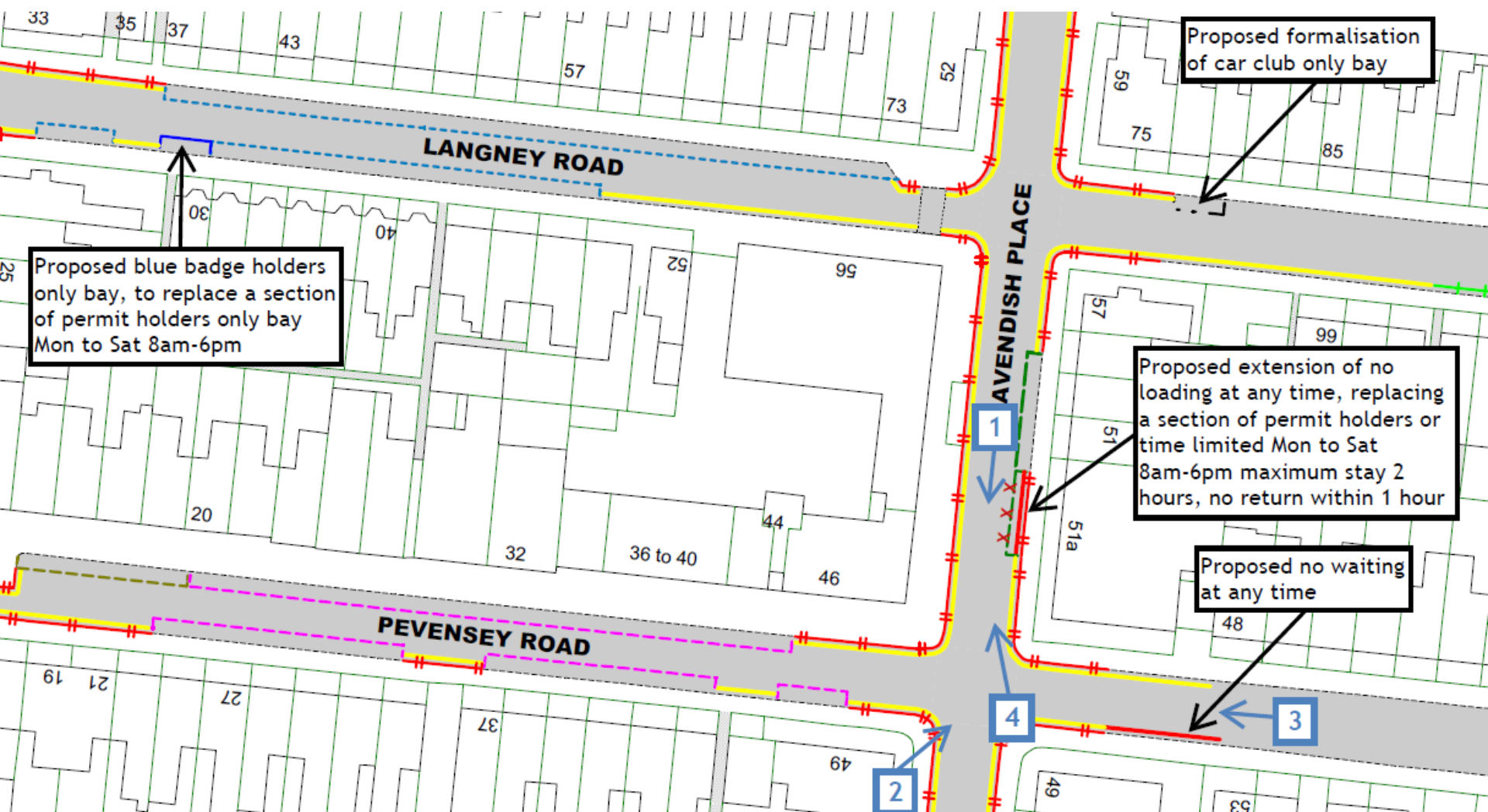






View 3 – Looking south along Cavendish Avenue towards its junction with Bourne Street and Ashford Road from outside Bourne Cottage











View 2 – Looking north across the junction of Cavendish Place and  
Pevensey Road from opposite 49 Cavendish Place





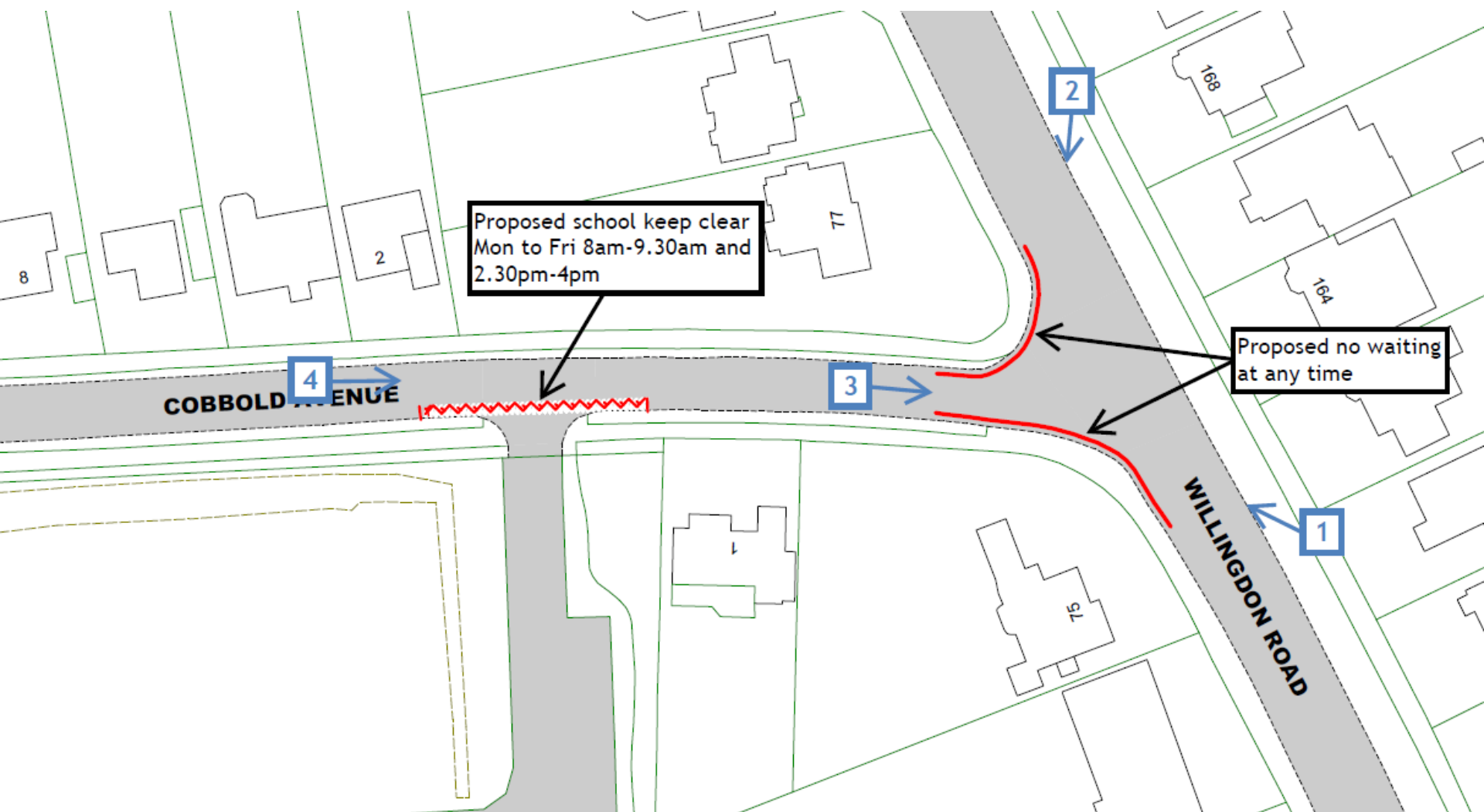




View 4 – Looking north-westwards along Cavendish Place from outside 49 Cavendish Place









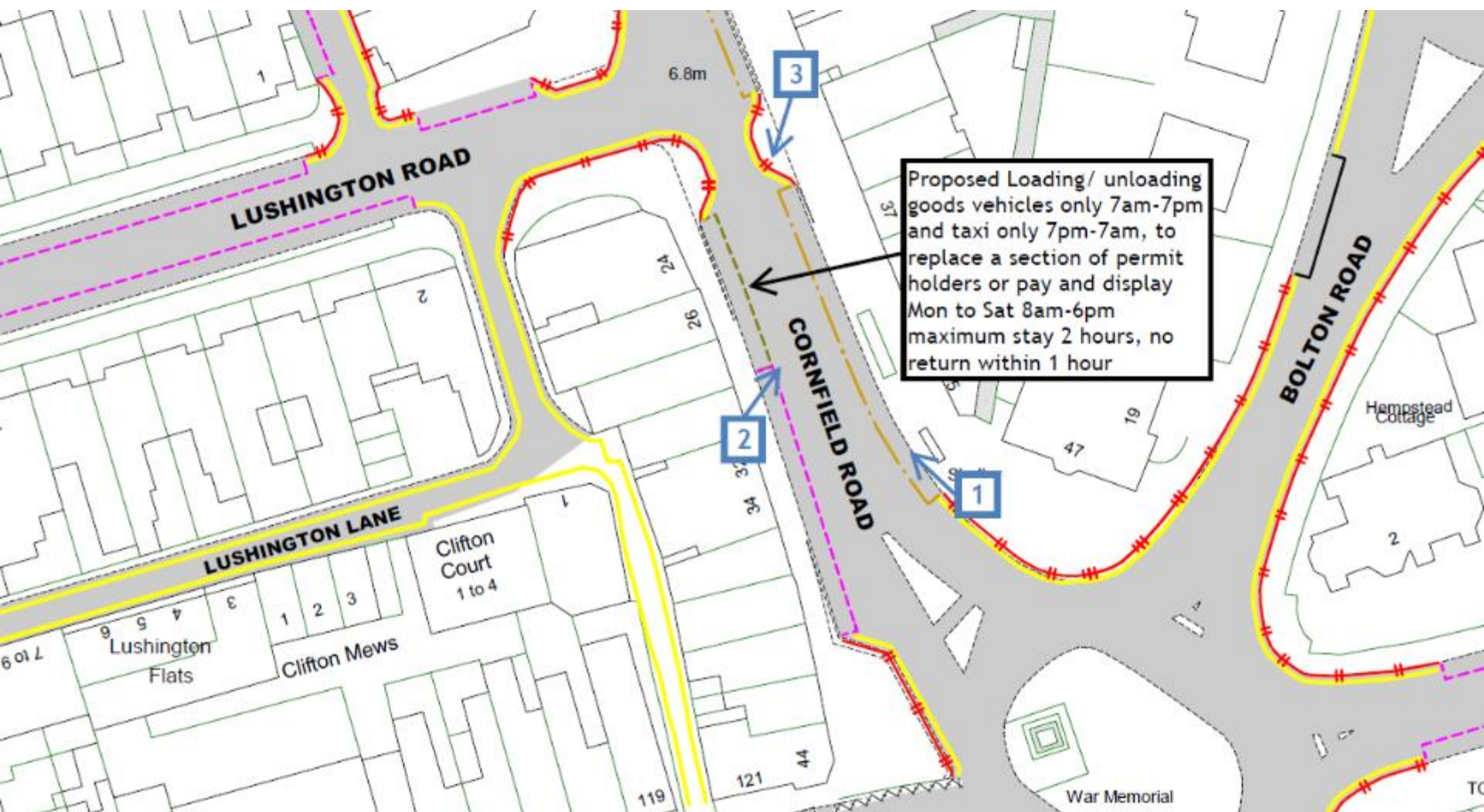








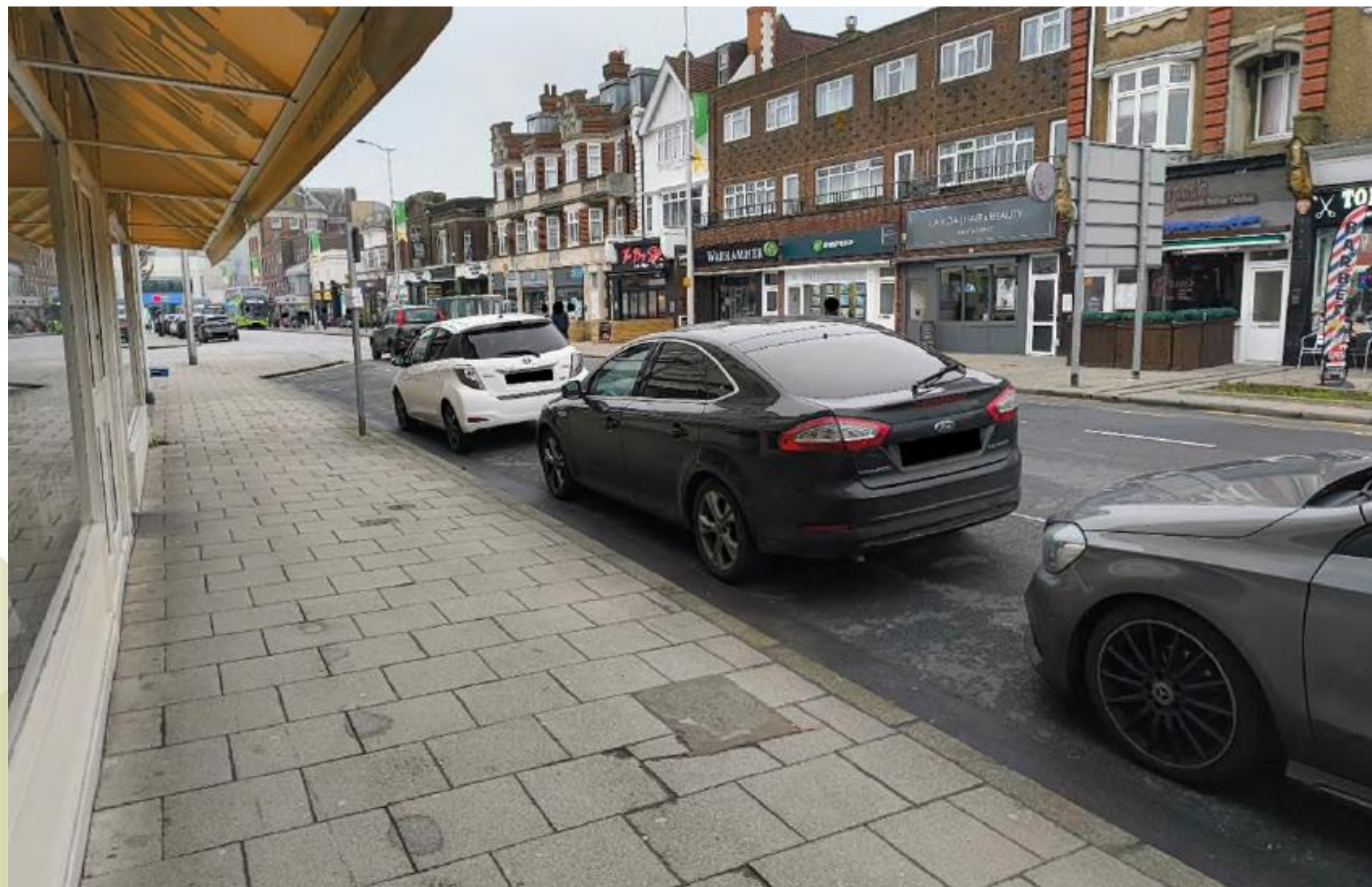








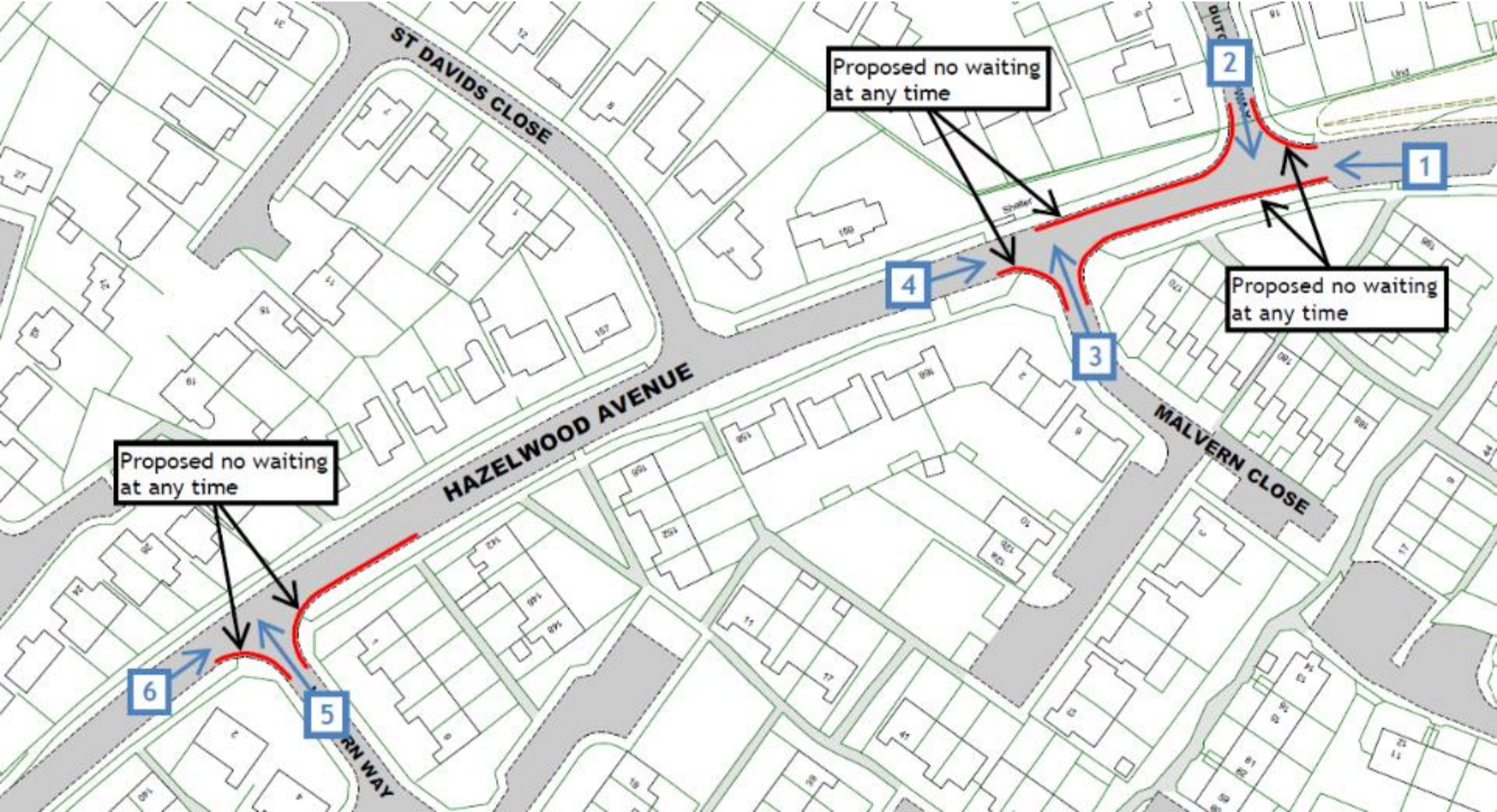














View 1 – Looking westwards along Hazelwood Avenue from  
opposite 18 Regnum Close















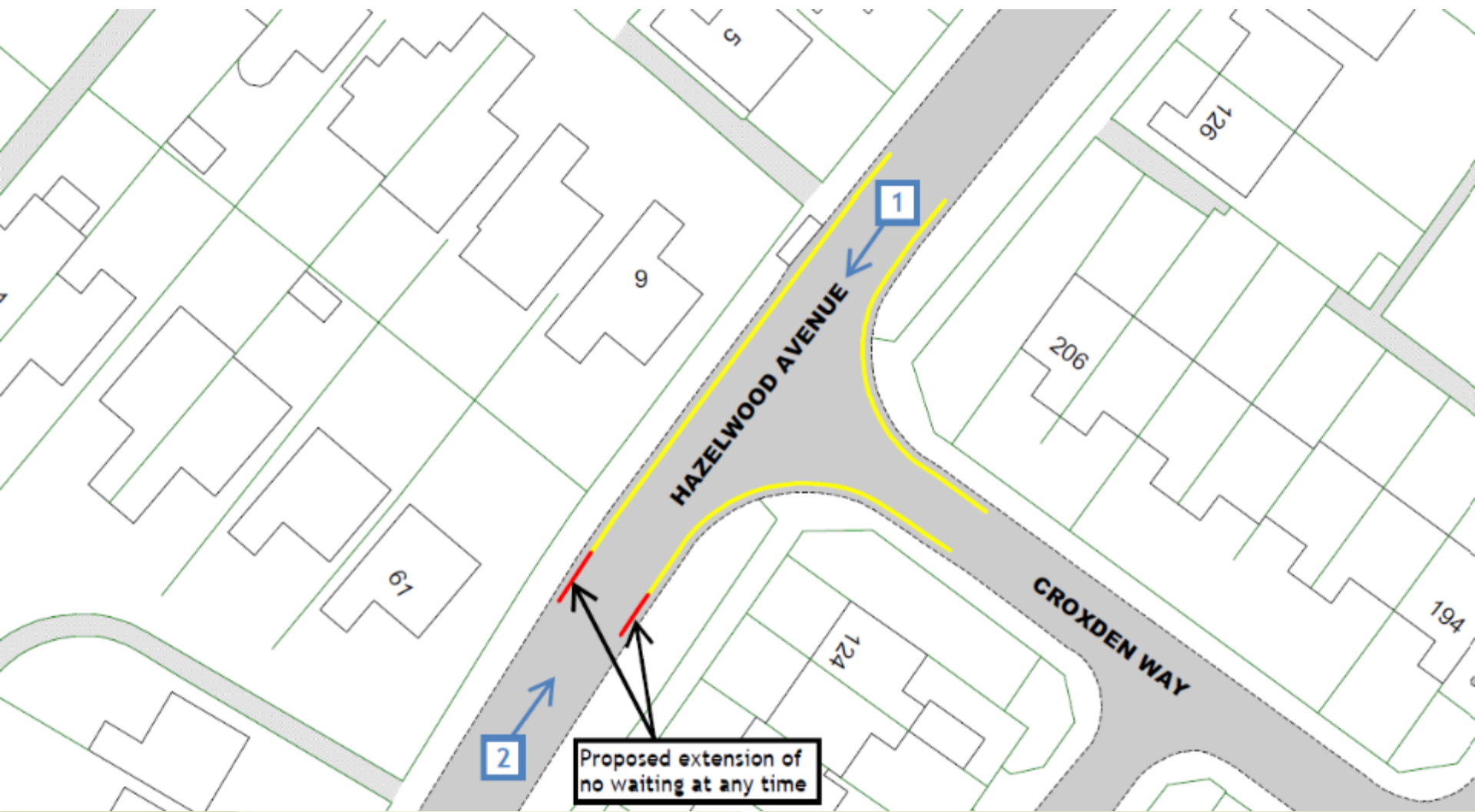








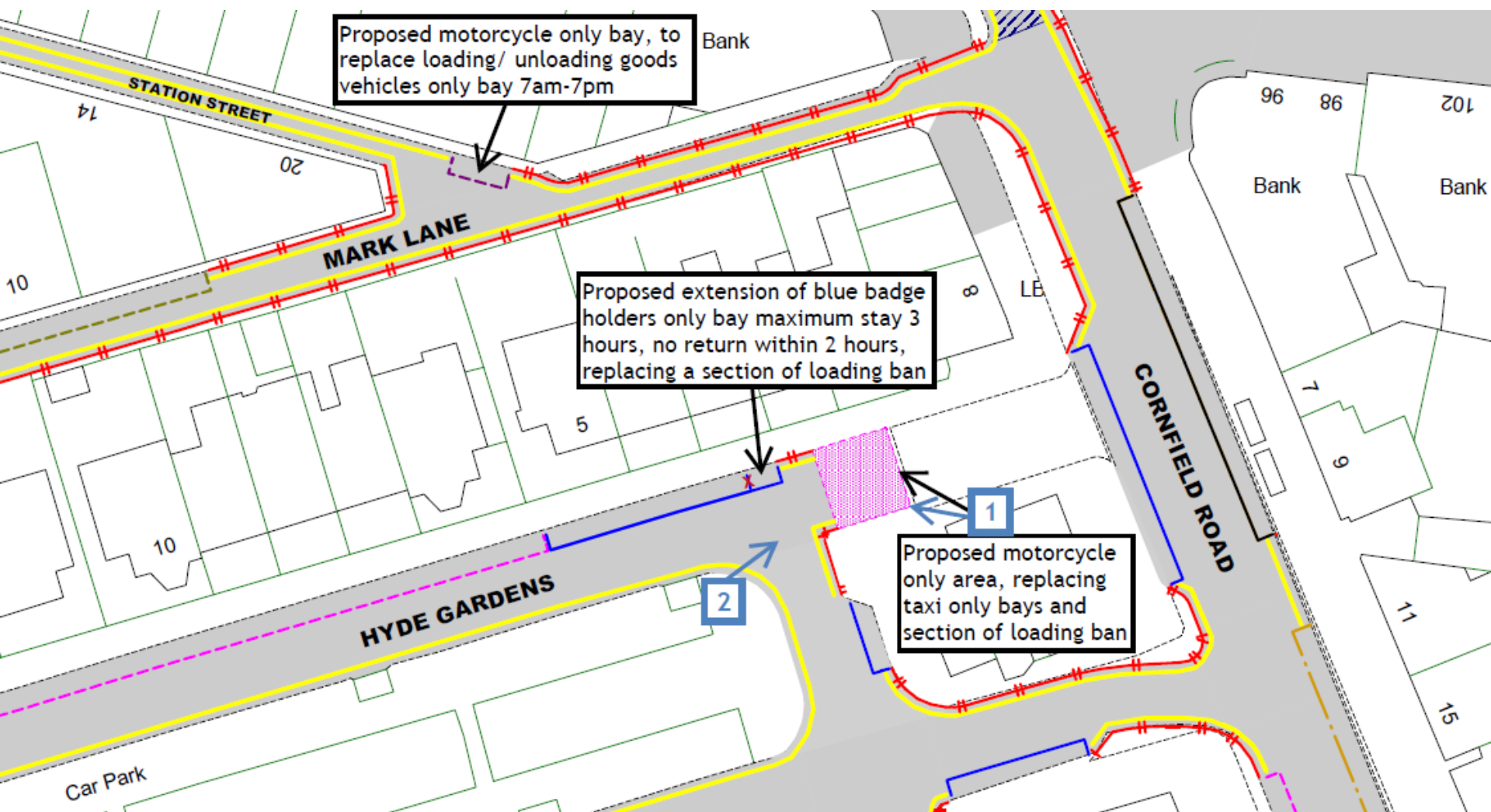












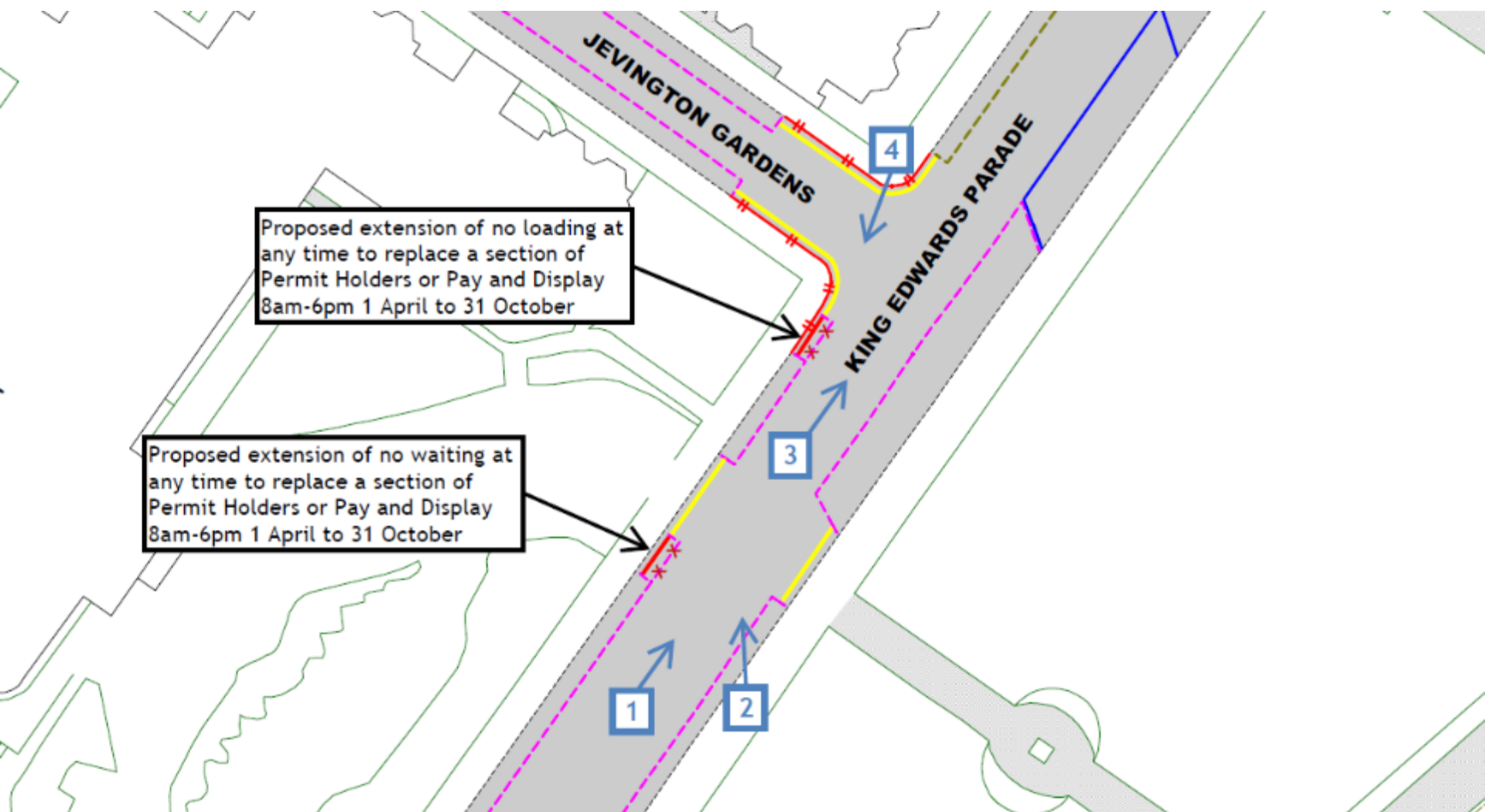
















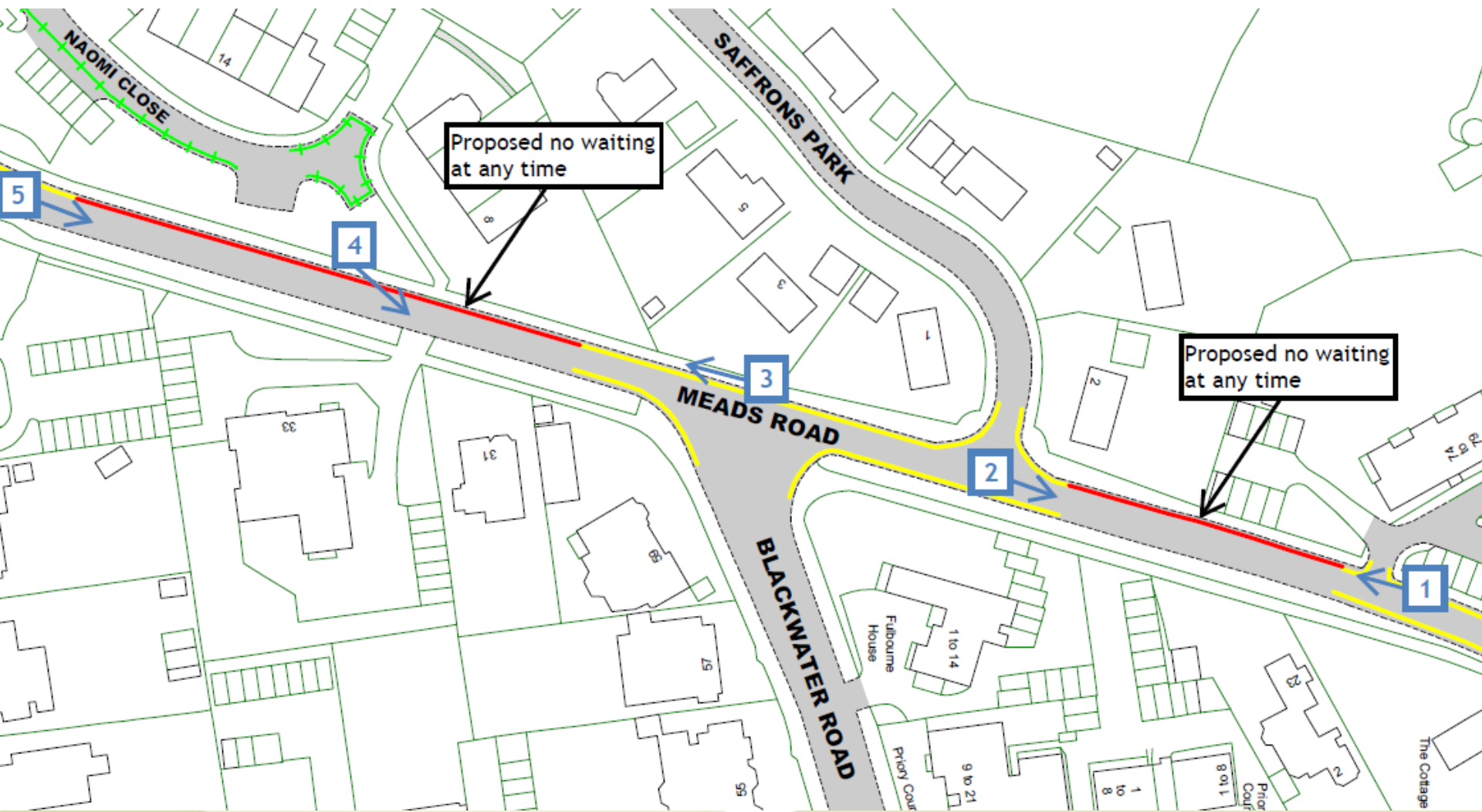


View 4 – Looking south-westwards along King Edwards Parade  
from the north side of its junction with Jevington Gardens



















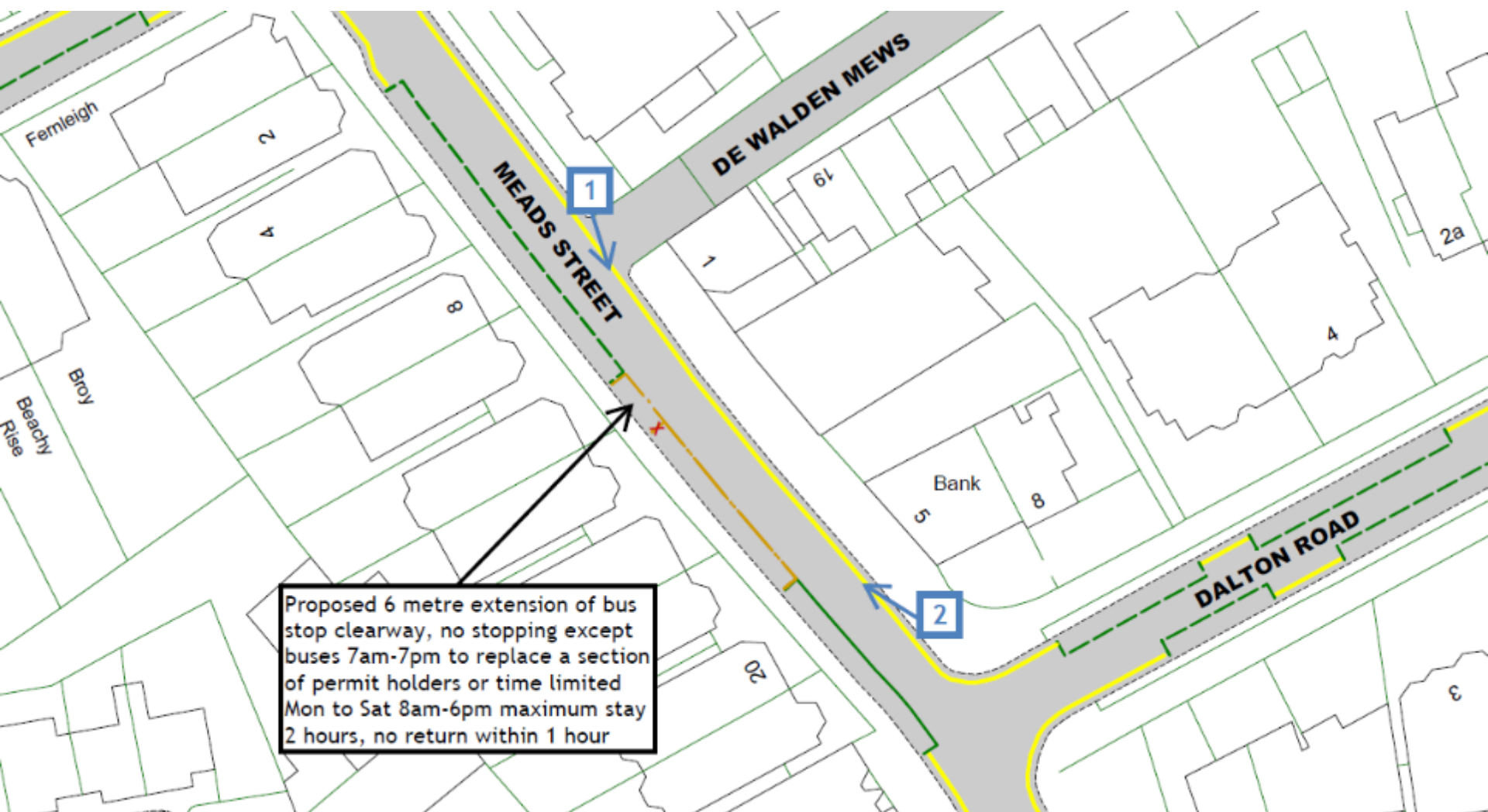












Proposed 6 metre extension of bus stop clearway, no stopping except buses 7am-7pm to replace a section of permit holders or time limited Mon to Sat 8am-6pm maximum stay 2 hours, no return within 1 hour



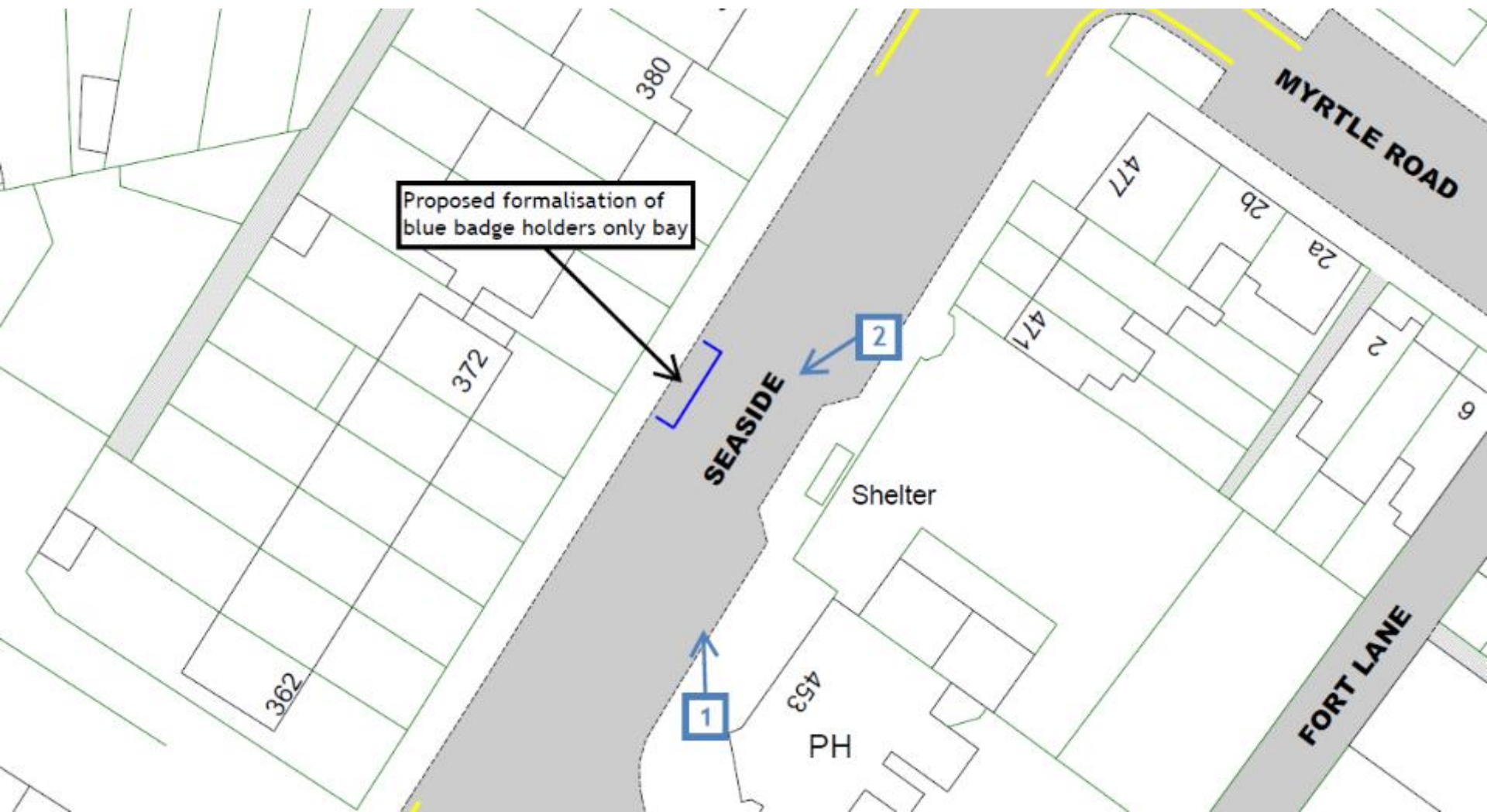




View 2 - Looking north-westwards along Meads Street from  
opposite 22 Meads Street



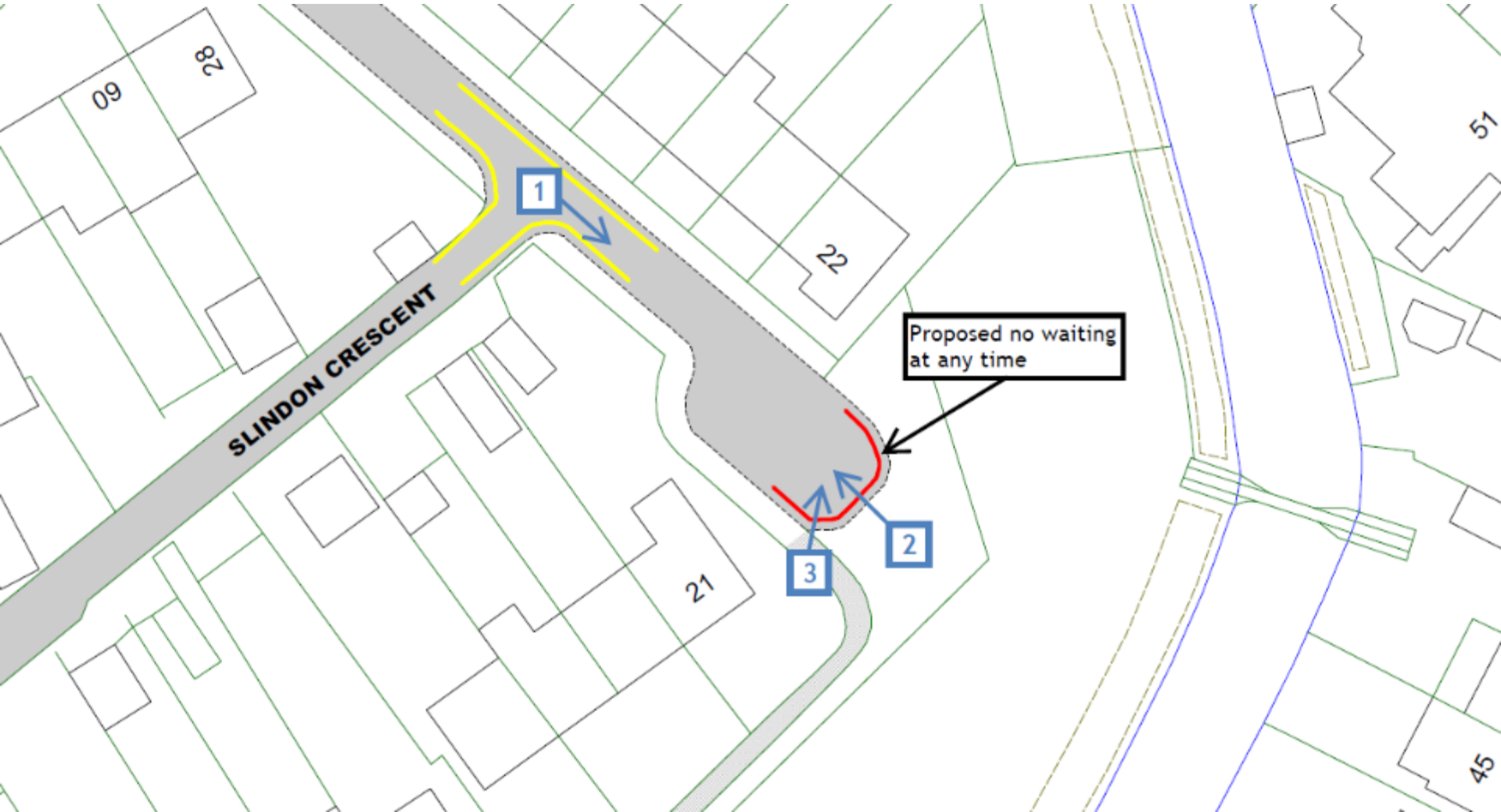
















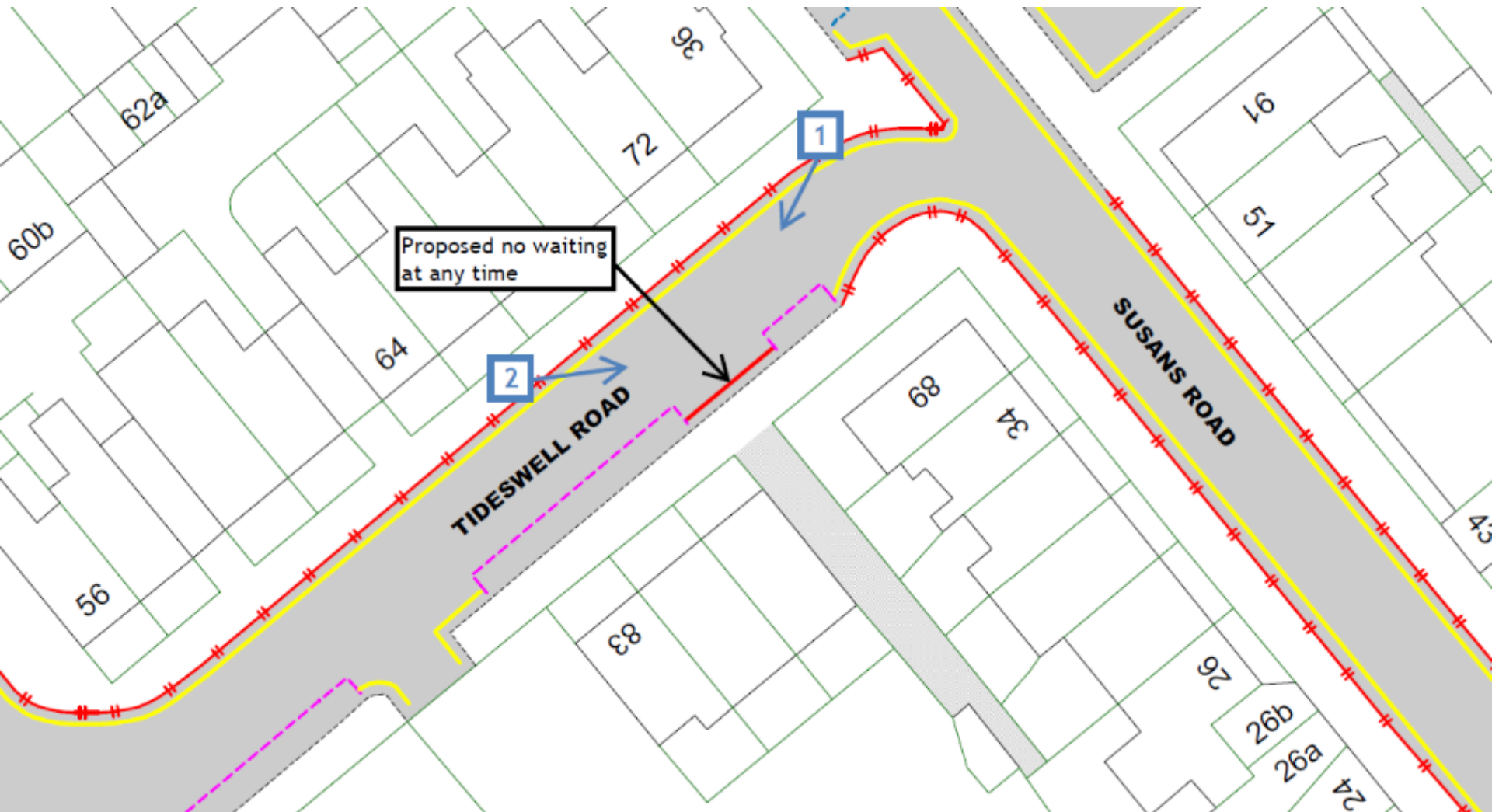






View 3 – Looking northwards across Slindon Crescent from outside 21 Slindon Crescent







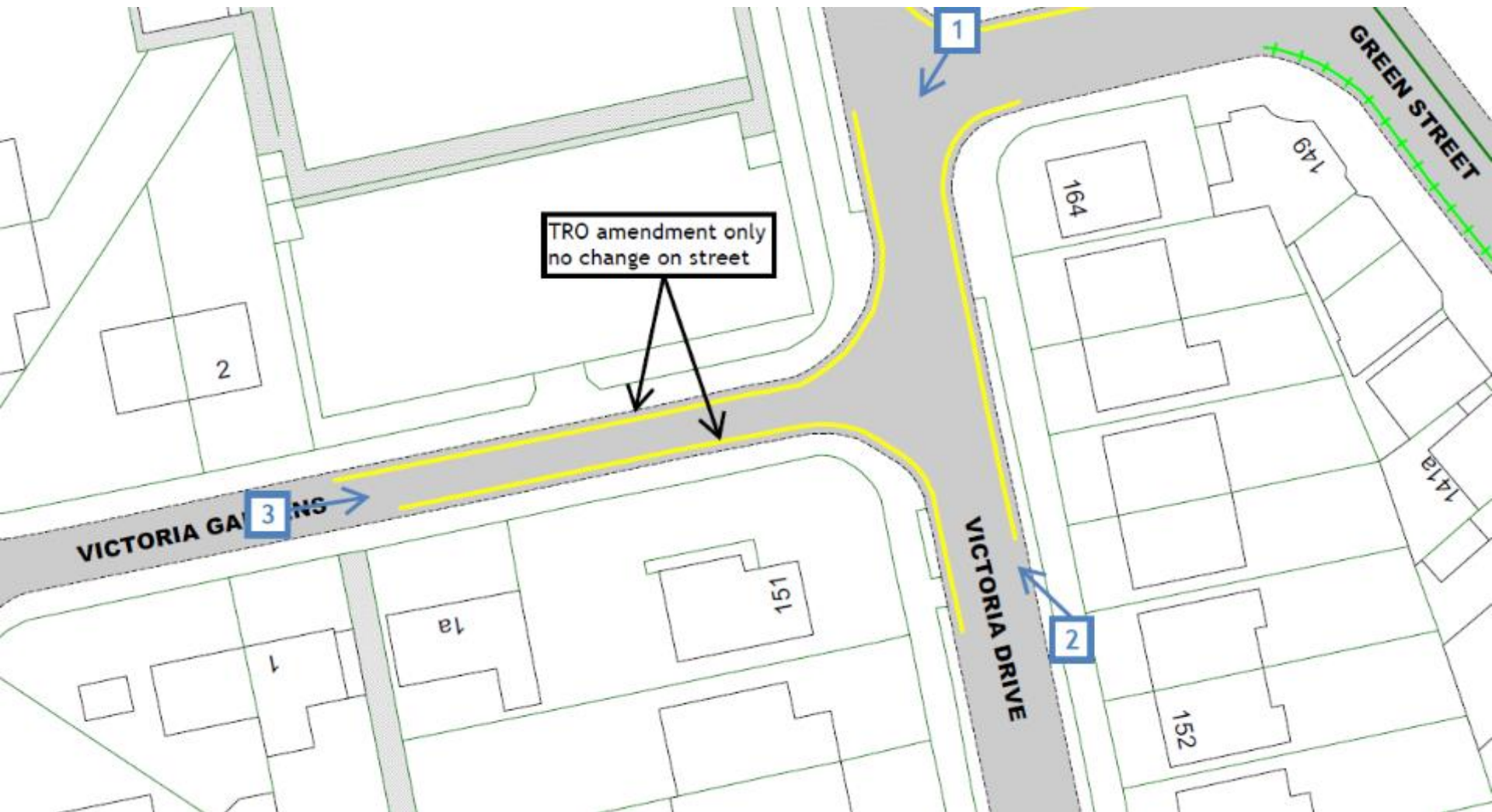
View 1 – Looking south-eastwards along Tideswell Road from outside 36 Susans Road











View 1 – Looking south-westwards along Victoria Drive from the northern side of its junction with Green Street











# Traffic Regulation Order: Eastbourne Parking Review 2

Objections received to changes to parking and waiting restrictions proposed during the latest parking review in Eastbourne Borough

# East Sussex County Council Planning Committee 19 March 2025